

Supporting Information

Neuroprotective thiazole sulfonamides against 6-OHDA-induced Parkinsonian model: *in vitro* biological and *in silico* pharmacokinetic assessments

Waralee Ruankham^{1,5}, Ratchanok Pingaew^{2,*}, Veda Prachayasittikul¹, Apilak Worachartcheewan³, Suphissara Sathuphong¹, Setthawut Apiraksattayakul¹, Tanawut Tantimongcolwat¹, Virapong Prachayasittikul⁴, Supaluk Prachayasittikul¹, Kamonrat Phopin^{1,4,*}

¹Center for Research Innovation and Biomedical Informatics, Faculty of Medical Technology, Mahidol University, Bangkok 10700, Thailand

²Department of Chemistry, Faculty of Science, Srinakharinwirot University, Bangkok 10110, Thailand

³Department of Community Medical Technology, Faculty of Medical Technology, Mahidol University, Bangkok 10700, Thailand

⁴Department of Clinical Microbiology and Applied Technology, Faculty of Medical Technology, Mahidol University, Bangkok 10700, Thailand

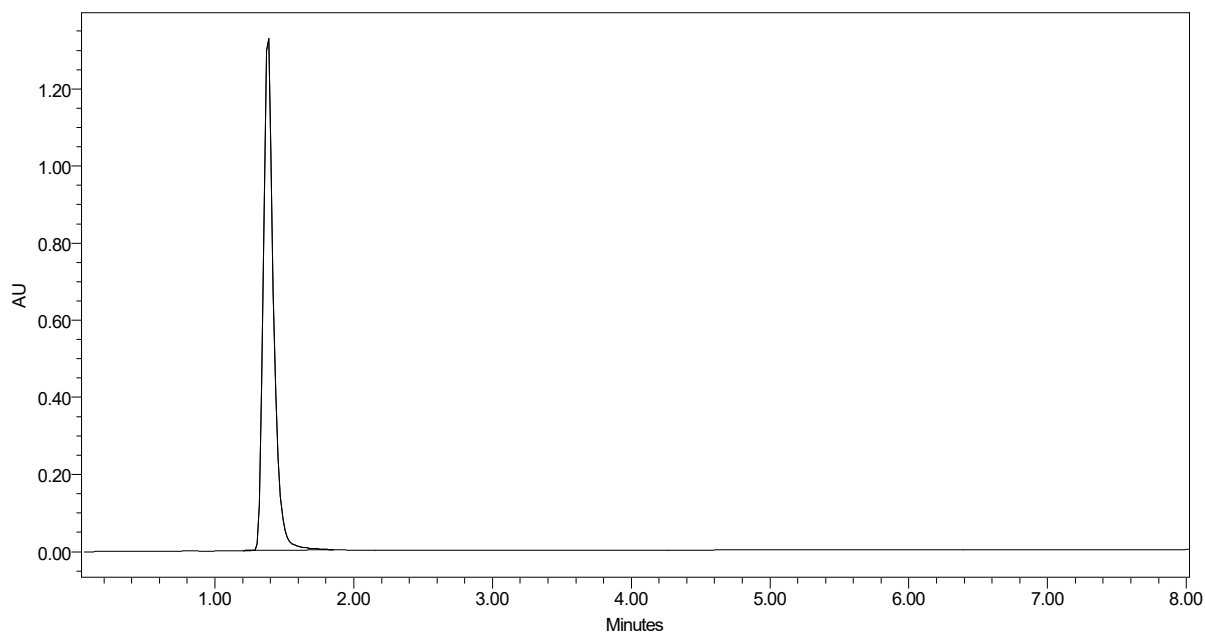
⁵Department of Clinical Chemistry, Faculty of Medical Technology, Mahidol University, Bangkok 10700, Thailand.

*Corresponding authors:

Ratchanok Pingaew, E-mail: ratchanok@g.swu.ac.th

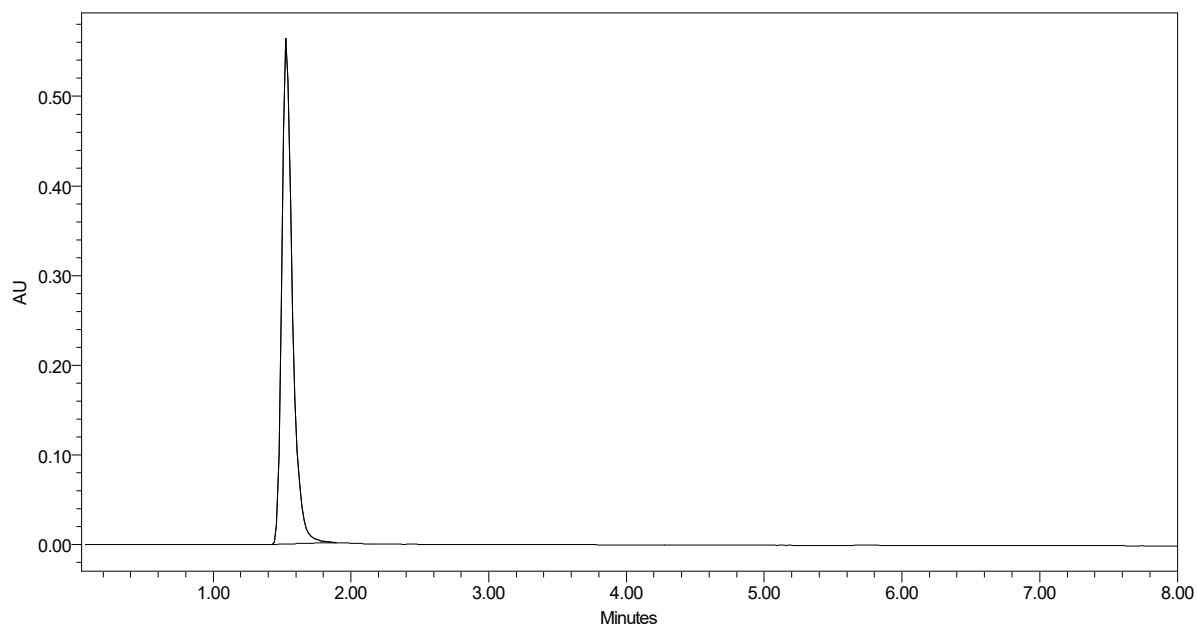
Kamonrat Phopin, E-mail: kamonrat.php@mahidol.ac.th, kamonrat.php@mahidol.edu

Phone: +66 (2) 441 4376, Fax: +66 (2) 441 4380



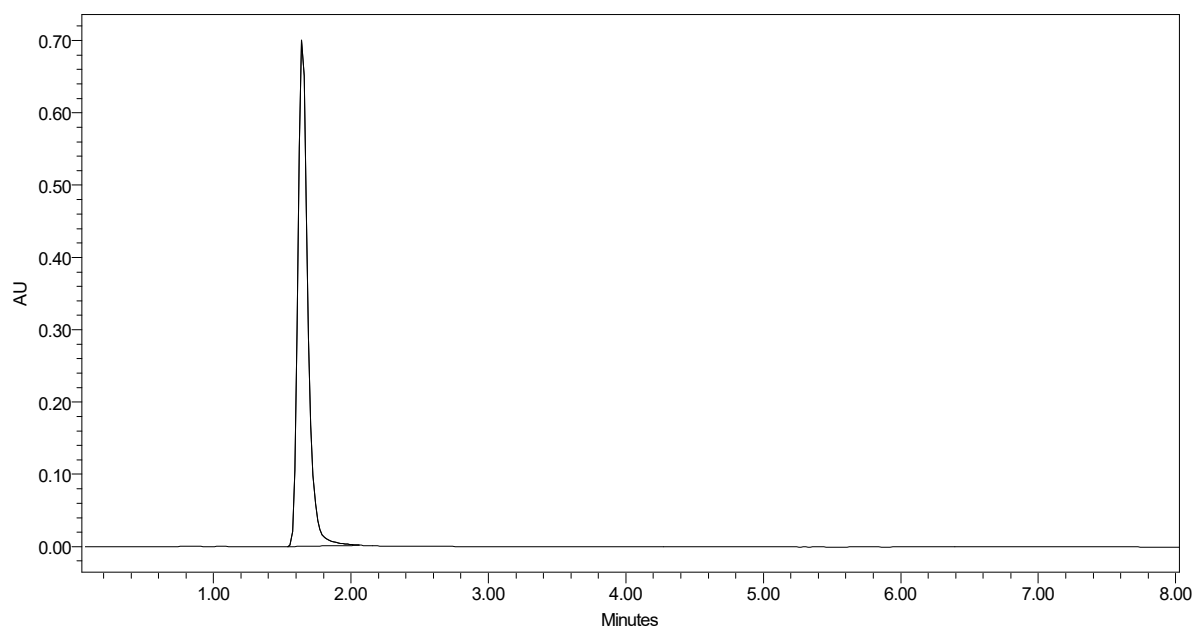
	RT	Area	% Area	Height
1	1.384	6869077	100.00	1318651

Figure S1. HPLC chromatogram of compound 1.



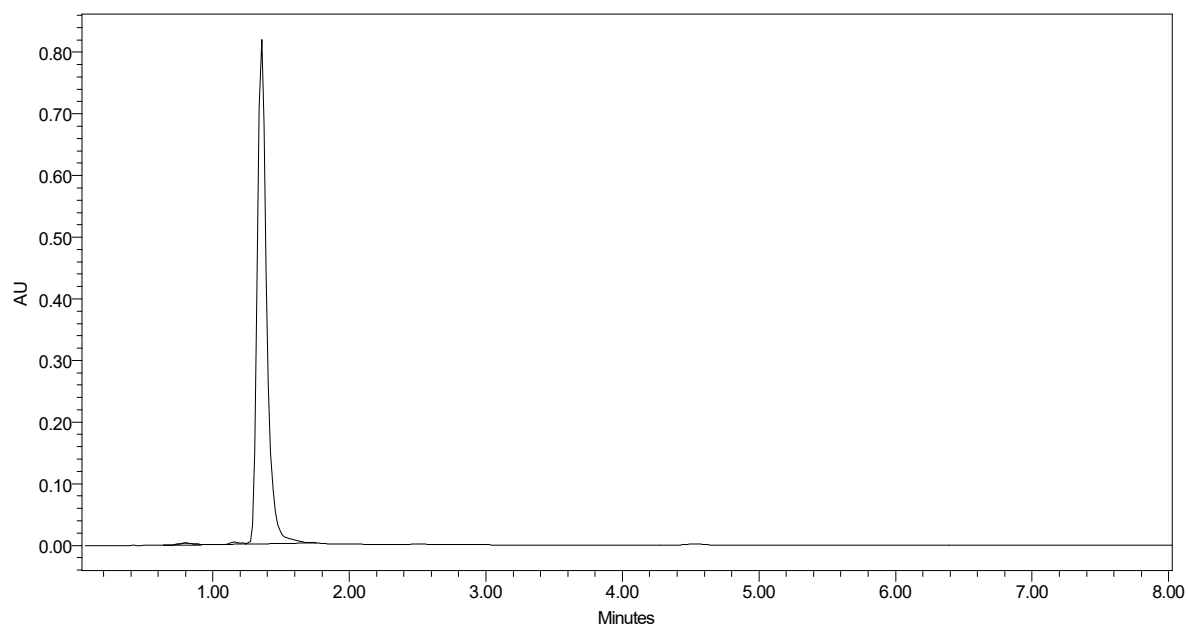
	RT	Area	% Area	Height
1	1.531	3015380	100.00	557457

Figure S2. HPLC chromatogram of compound 2.



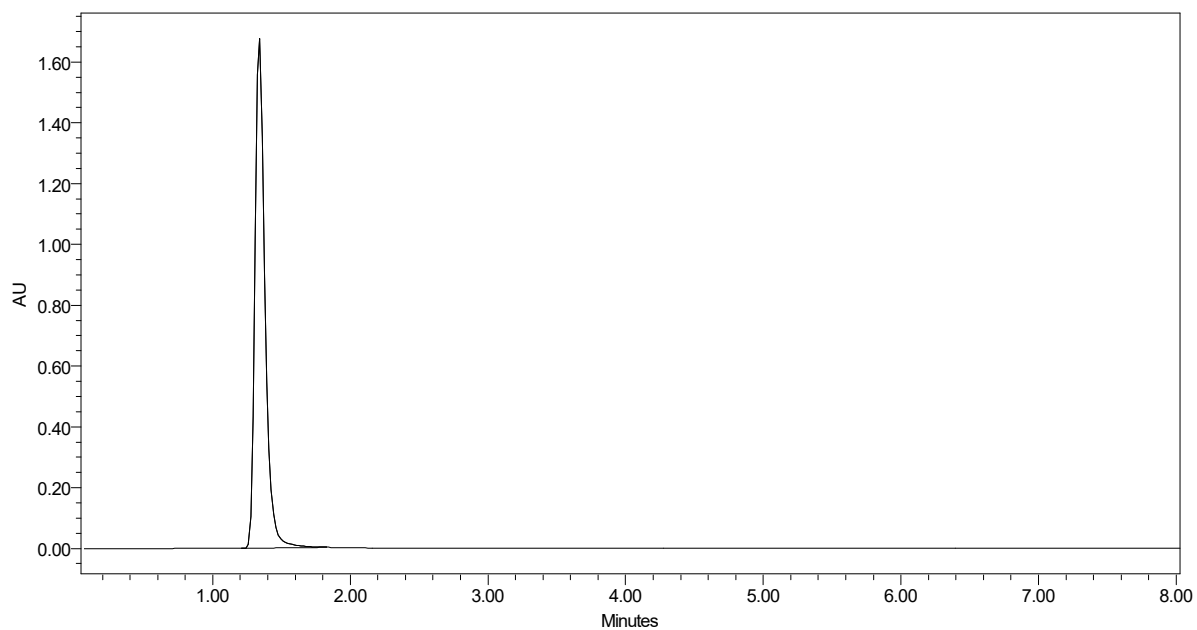
	RT	Area	% Area	Height
1	1.646	3545595	100.00	692796

Figure S3. HPLC chromatogram of compound 3.



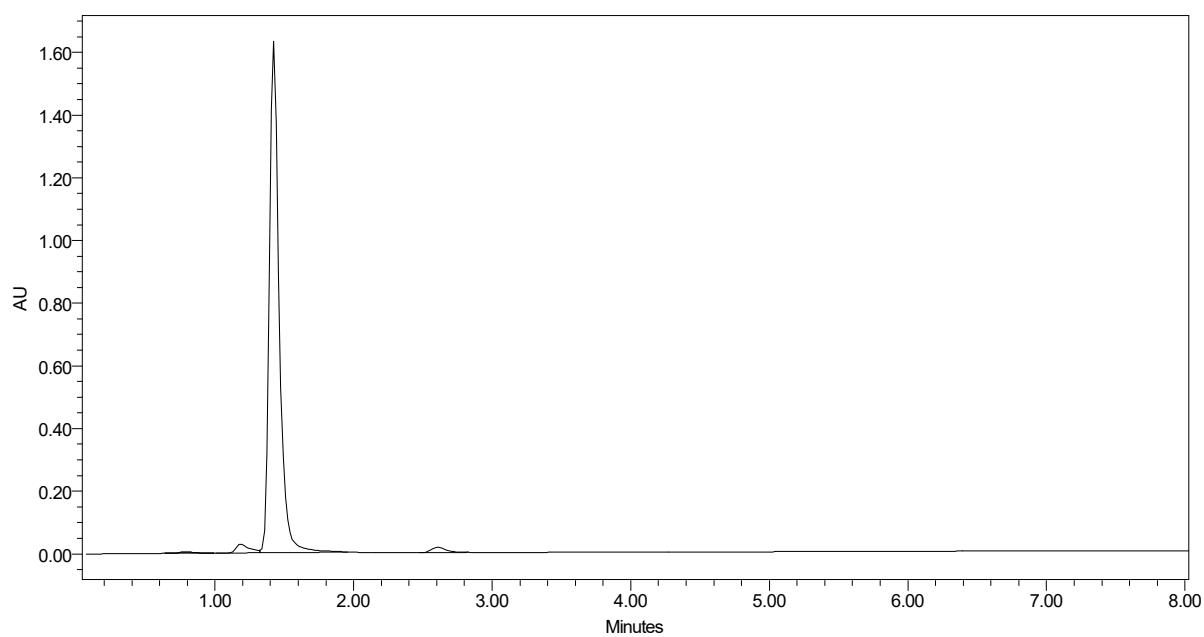
	RT	Area	% Area	Height
1	0.805	23824	0.60	3052
2	1.160	21262	0.54	3725
3	1.358	3928473	98.87	800469

Figure S4. HPLC chromatogram of compound 4.



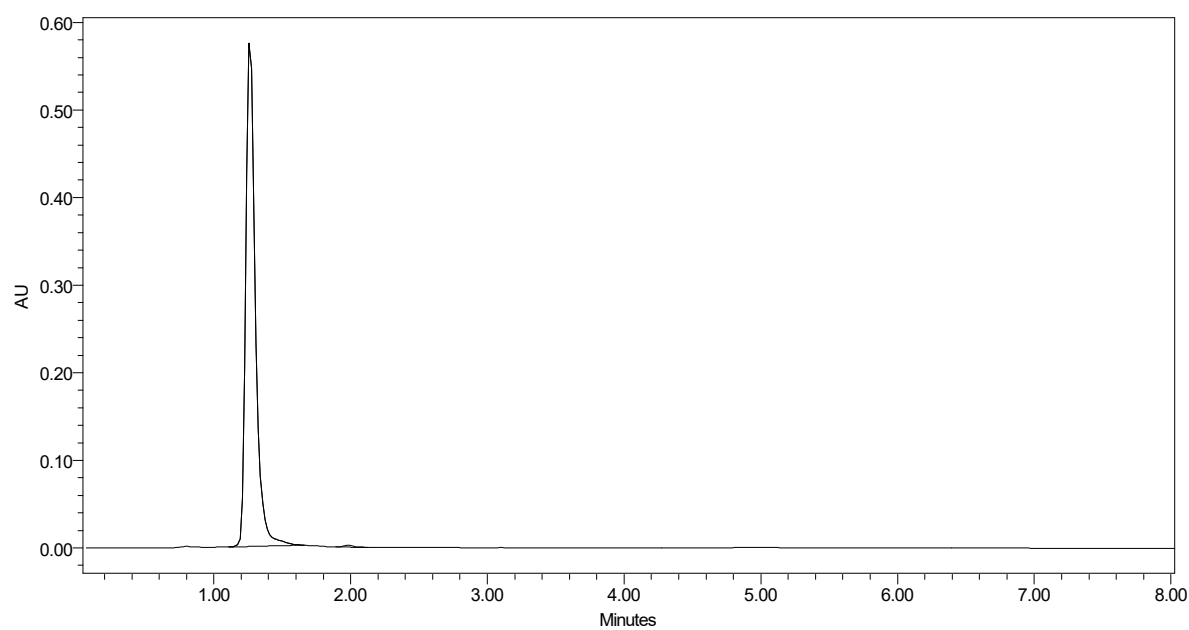
	RT	Area	% Area	Height
1	1.341	8491344	100.00	1650231

Figure S5. HPLC chromatogram of compound **5**.



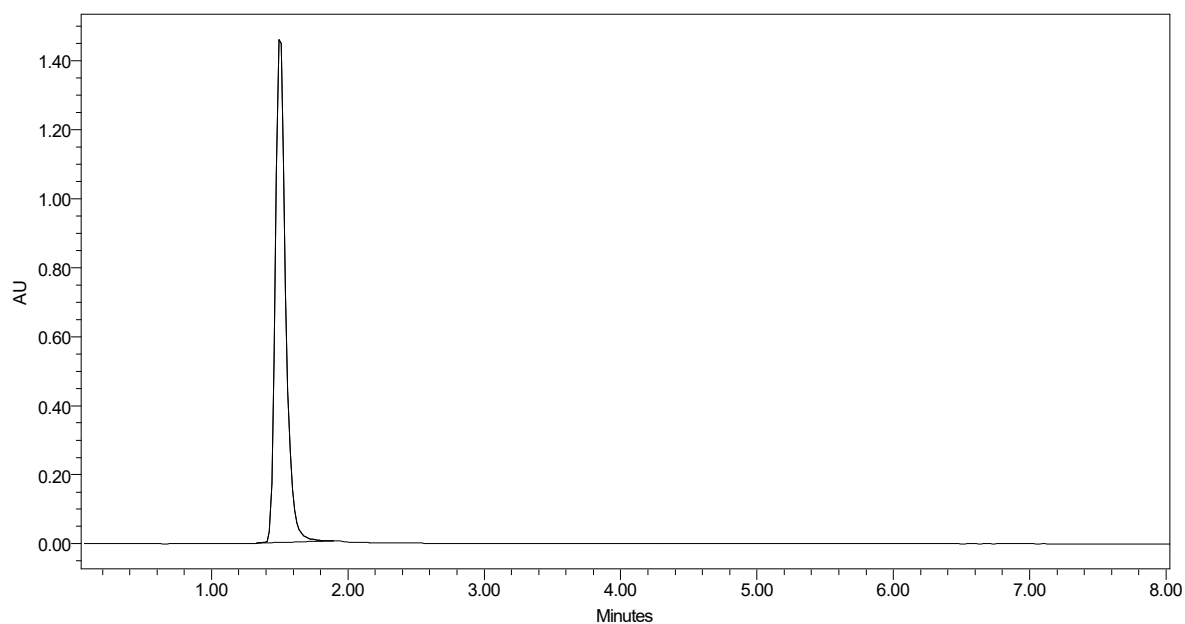
	RT	Area	% Area	Height
1	0.792	35551	0.43	4834
2	1.191	193943	2.34	27940
3	1.425	7960879	95.85	1597521
4	2.610	115334	1.39	17107

Figure S6. HPLC chromatogram of compound **6**.



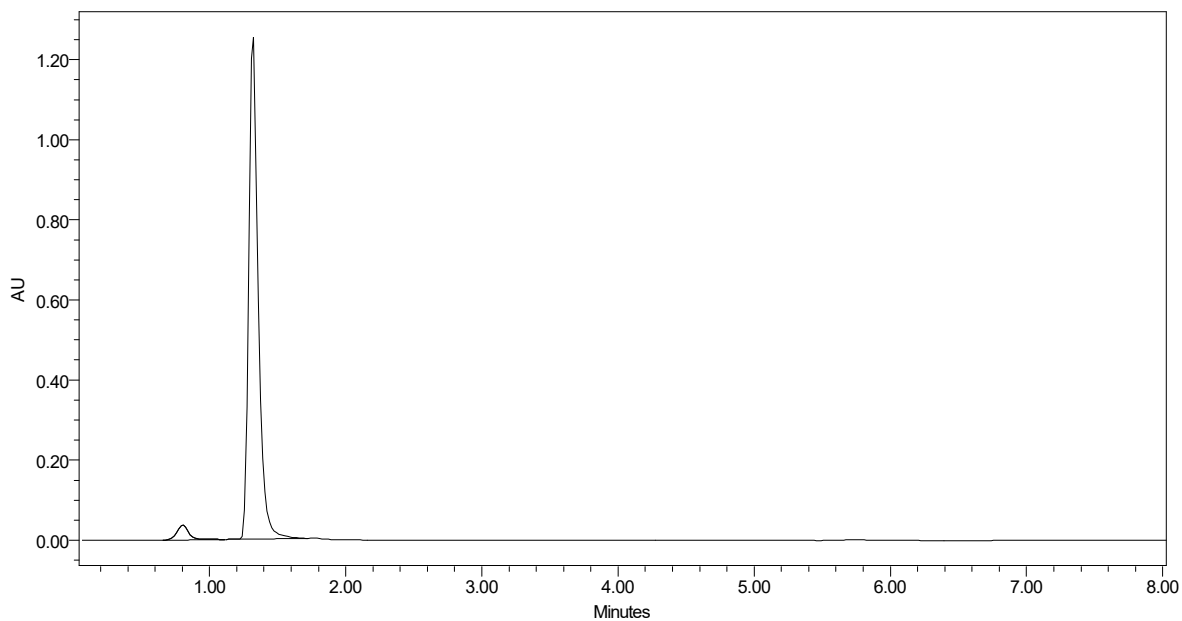
	RT	Area	% Area	Height
1	1.264	2820832	99.61	570393
2	1.985	11097	0.39	2103

Figure S7. HPLC chromatogram of compound 7.



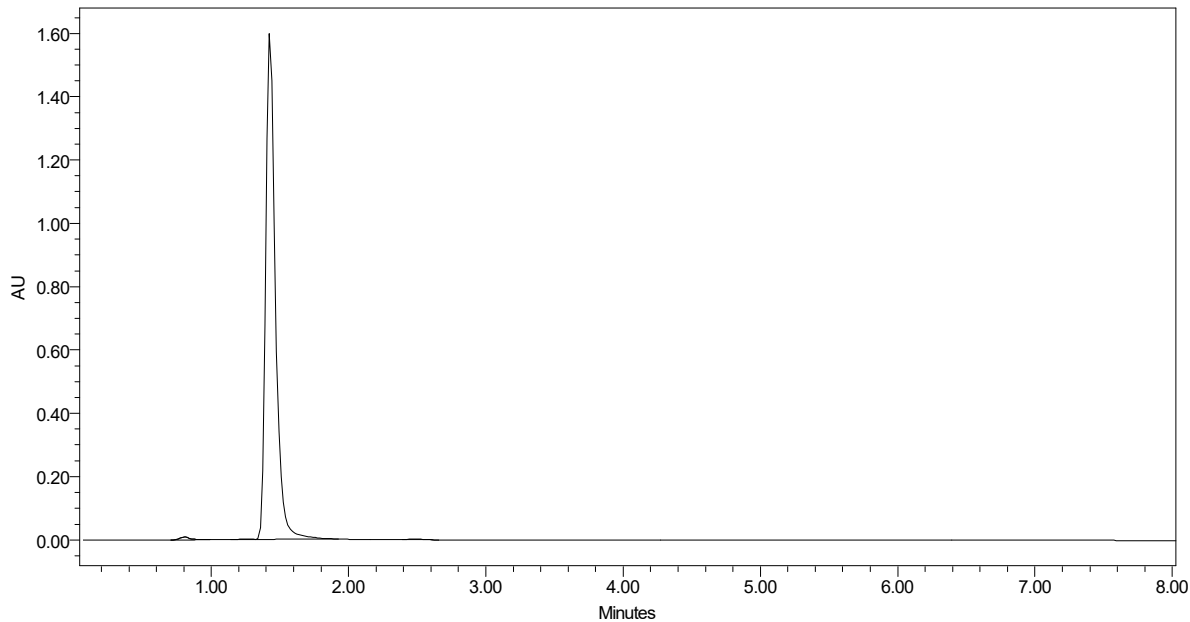
	RT	Area	% Area	Height
1	1.502	7701007	100.00	1468247

Figure S8. HPLC chromatogram of compound 8.



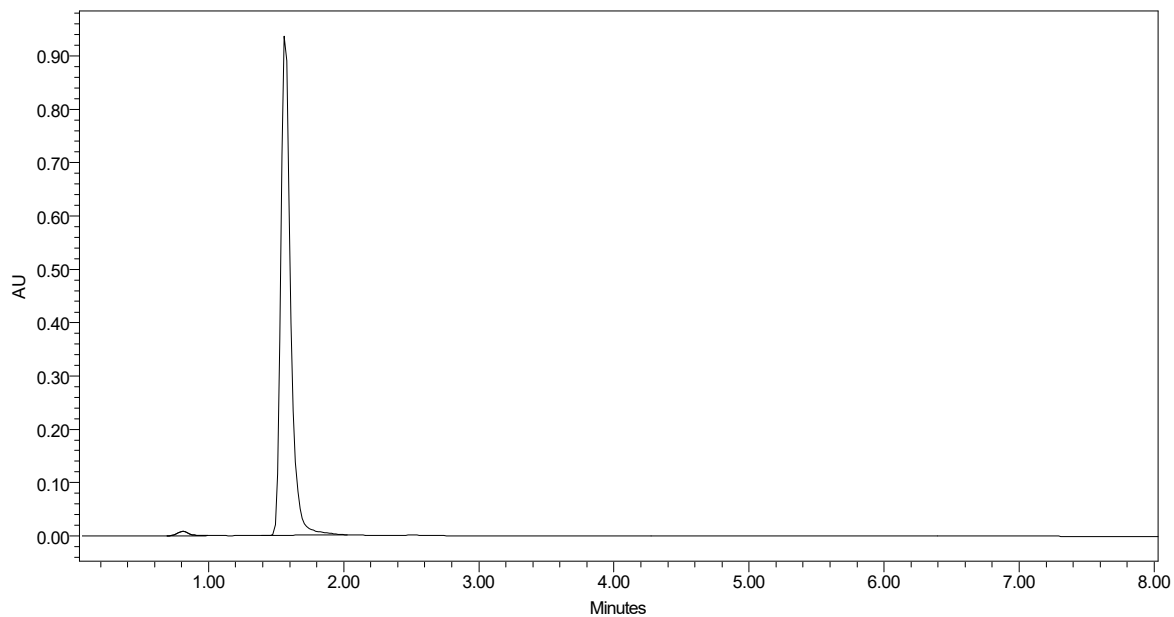
	RT	Area	% Area	Height
1	0.804	226174	3.56	37219
2	1.321	6122434	96.44	1238673

Figure S9. HPLC chromatogram of compound **9**.



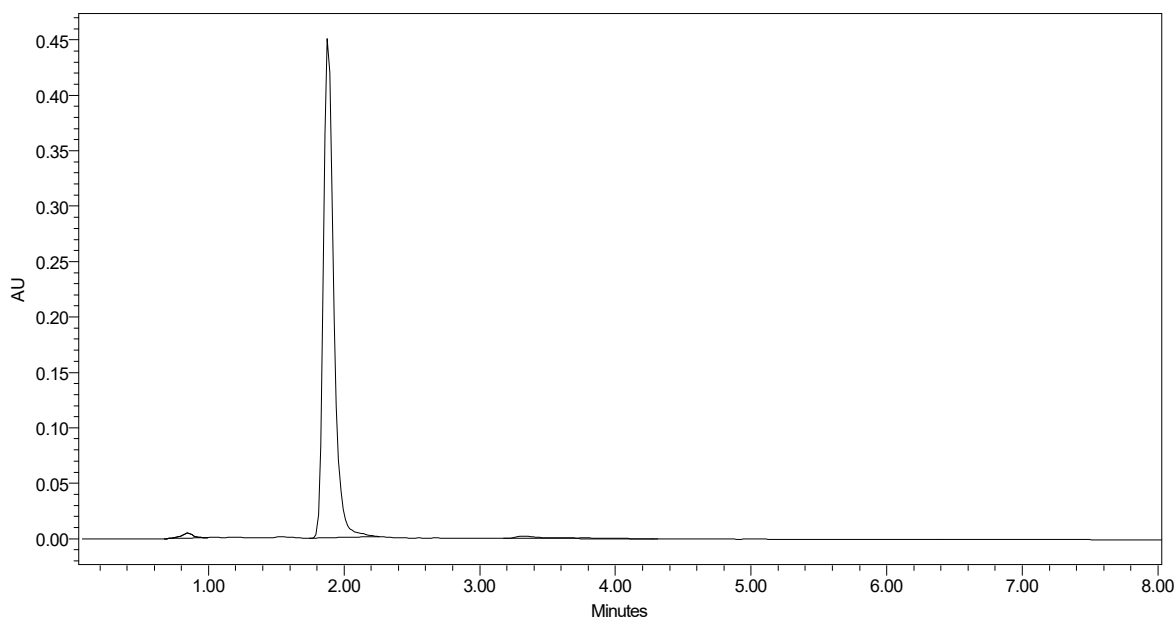
	RT	Area	% Area	Height
1	0.801	52444	0.67	9174
2	1.429	7791447	99.11	1571975
3	2.487	17194	0.22	2891

Figure S10. HPLC chromatogram of compound **10**.



	RT	Area	% Area	Height
1	0.810	50506	1.06	8557
2	1.566	4735578	98.94	929804

Figure S11. HPLC chromatogram of compound **11**.



	RT	Area	% Area	Height
1	0.846	27549	1.12	4481
2	1.881	2382857	97.16	446117
3	3.325	42106	1.72	2255

Figure S12. HPLC chromatogram of compound **12**.