

The datasets supporting this article have been uploaded as part of the supplementary information

Supplement information for

Enhancing extraction efficiency of basic alkaloid in *Carica Papaya* leaves: coupling acid-base extraction with surfactant-assisted micro-flotation

Table S1: Mann-Whitney U test confirmed the significant differences between foam sample (F) and the controls (C1, C2, C3)

Sample of comparison	Sample size	p-value (two-tailed)	Significant level (α)
F – C1	3-3	0.0495	0.05
F – C2	3-3	0.0495	
F – C3	3-3	0.0495	

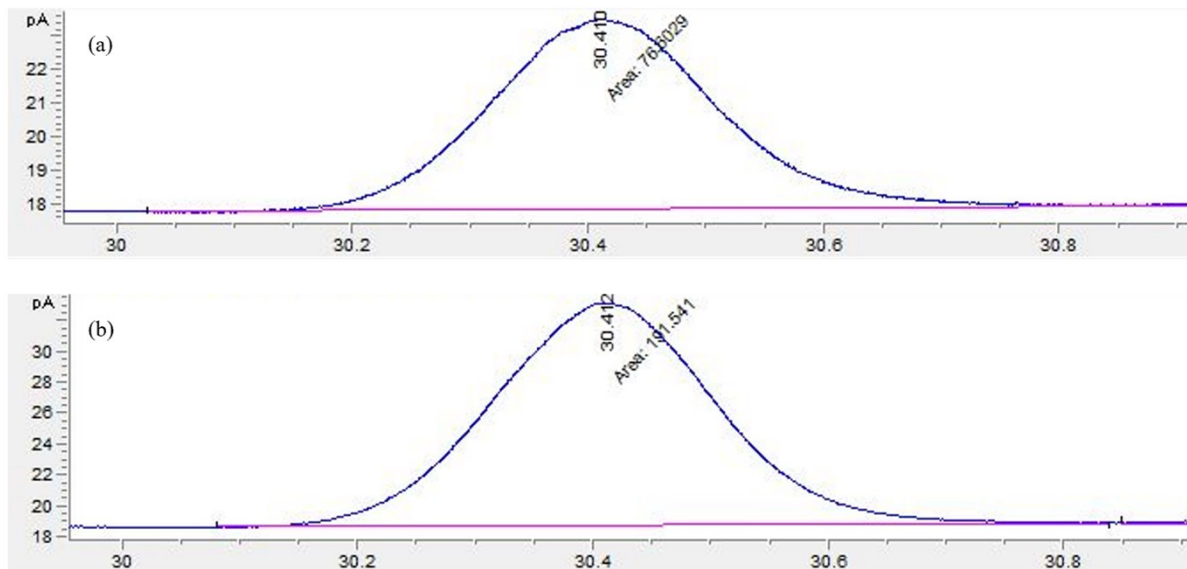


Figure S1. GC-FID carpaine characterization. (a) 2% CTAB foam, (b) 2% CTAB foam + standard carpaine