

### Supplementary data

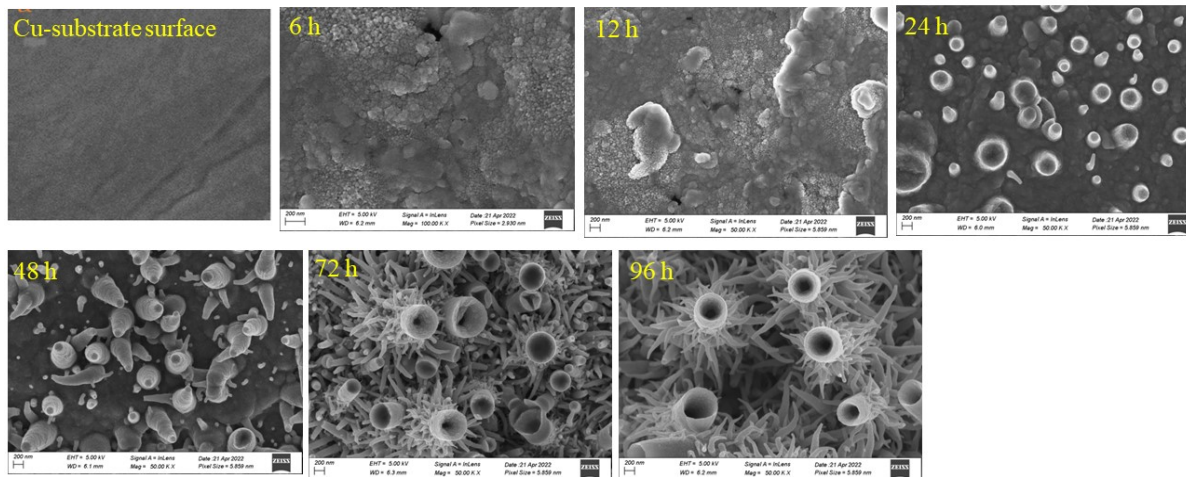


Fig. S1: SEM images of  $\text{Cu}_7\text{S}_4$  on Cu-substrate exposed to volatile organosulfur compounds of *Allium Sativum* at different reaction intervals (from 6-96h)

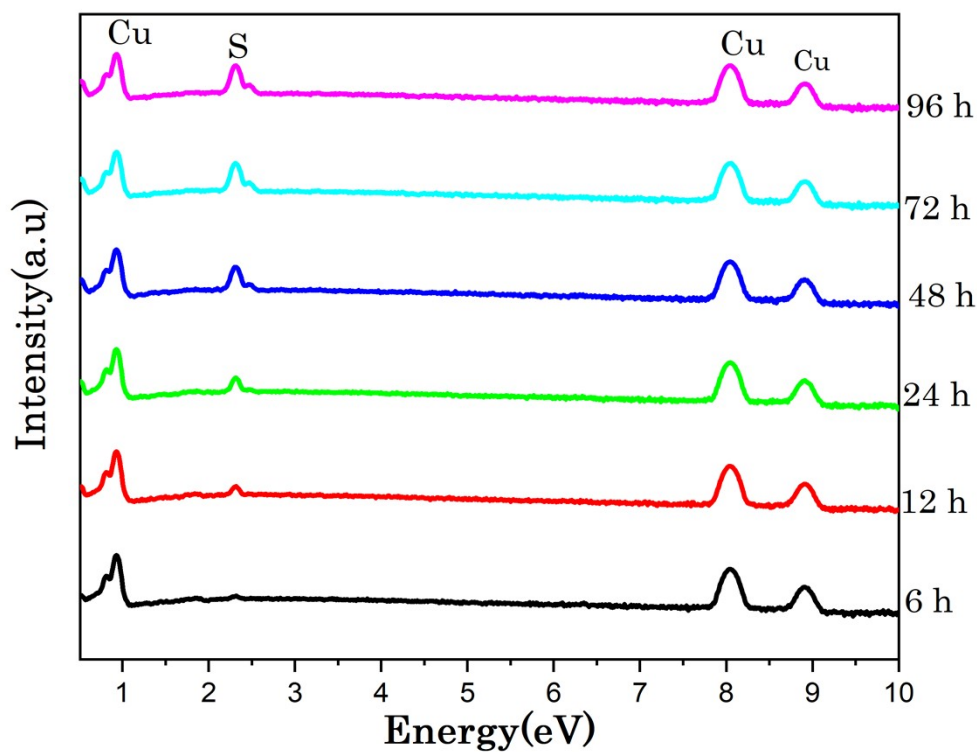


Fig. S2: EDS spectra of  $\text{Cu}_7\text{S}_4$  on Cu-substrate exposed to volatile organosulfur compounds of *Allium Sativum* at different reaction intervals (from 6-96h).