

Supplementary information

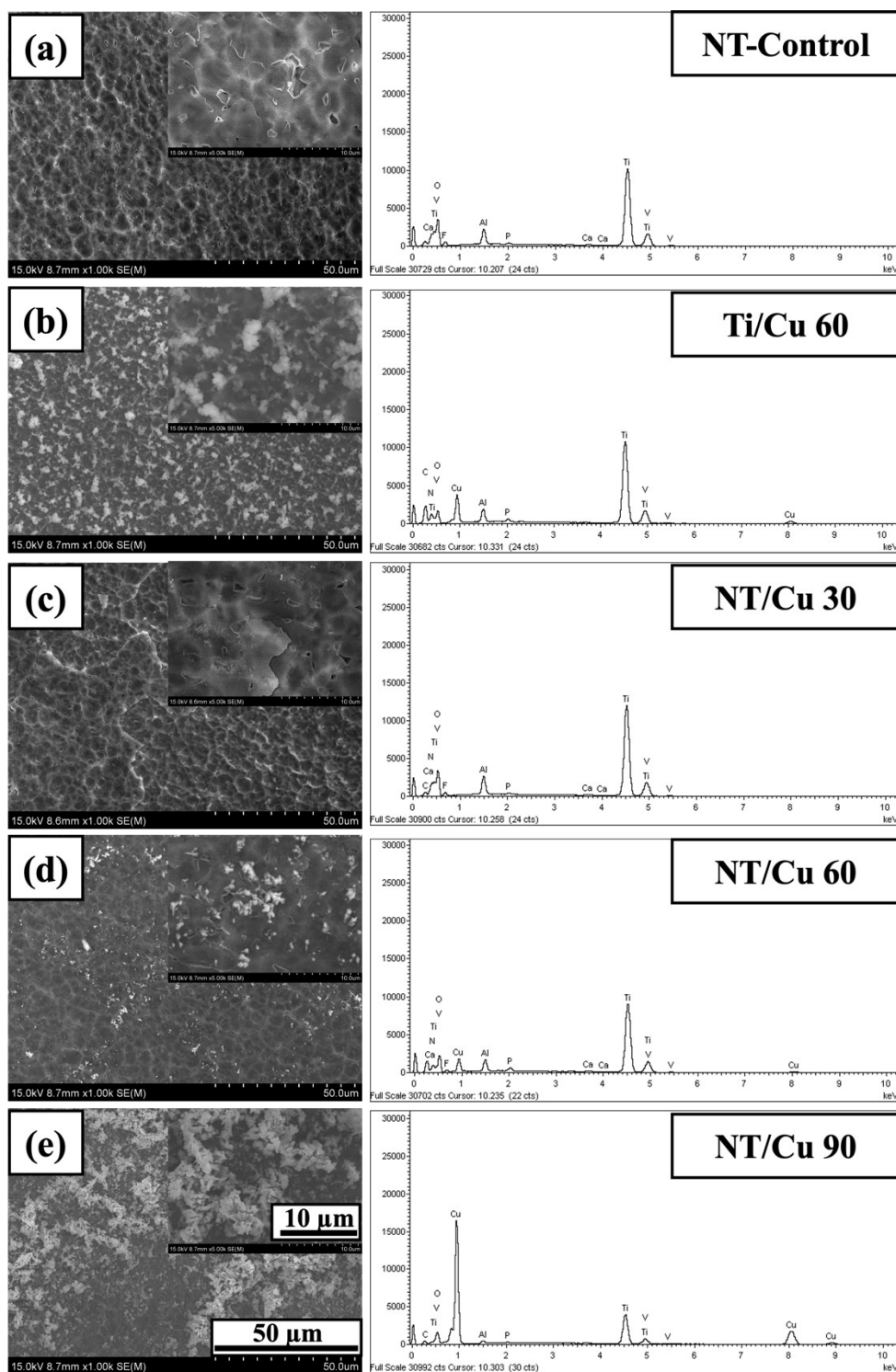


Figure S1 Low magnification SEM images are shown in (a) to (e), with high magnification SEM images (inlets) and the corresponding EDX spectra for NT, Ti/Cu, NT/Cu 30, NT/Cu 60, NT/Cu 90, respectively, following immersion in TSB.

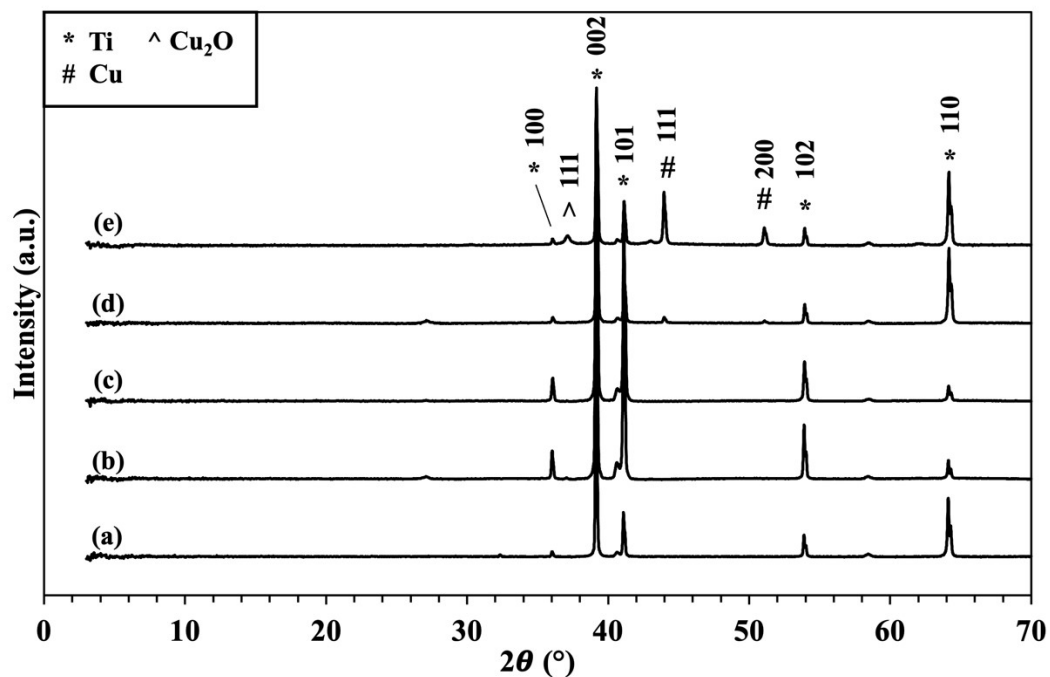


Figure S2 XRD patterns for (a) NT-Control, (b) Ti/Cu 60, (c) NT/Cu 30, (d) NT/Cu 60, and (e) NT/Cu 90, respectively, following immersion in TSB.

Table S1 Elemental composition of surfaces immediately after electrodeposition.

Sample	F	Na	Al	P	S	Cl	K	Ti	V	Cu	O
NT-Control	7.62 ± 0.72	0.00	3.15 ± 0.23	0.00	0.00	0.00	0.00	50.73 ± 2.75	2.10 ± 0.29	0.00	36.90 ± 2.15
Ti/Cu 60	0.00	0.00	0.22 ± 0.10	0.00	0.00	0.00	0.00	15.44 ± 1.91	0.86 ± 0.06	57.74 ± 2.69	25.73 ± 0.68
NT/Cu 30	1.92 ± 0.23	0.00	0.93 ± 0.13	0.00	0.39 ± 0.09	0.00	0.00	22.53 ± 1.21	0.95 ± 0.08	44.79 ± 1.75	28.49 ± 0.49
NT/Cu 60	1.08 ± 0.21	0.00	0.56 ± 0.07	0.00	0.28 ± 0.05	0.00	0.00	17.52 ± 1.67	0.78 ± 0.11	53.47 ± 2.77	26.68 ± 0.59
NT/Cu 90	0.00	0.00	0.12 ± 0.02	0.00	0.00	0.00	0.00	8.86 ± 2.87	0.50 ± 0.19	67.27 ± 5.65	23.31 ± 1.04

Table S2 Elemental composition of surfaces after immersion in DPBS.

Sample	F	Na	Al	P	S	Cl	K	Ti	V	Cu	O
NT-Control	5.68 ±	5.24 ±	2.71 ±	0.45 ±	0.00	4.94 ±	0.19 ±	46.21 ±	1.82 ±	0.00	34.72 ±
	1.72	5.59	0.58	0.05		5.76	0.06	6.61	0.24		3.87
Ti/Cu 60	0.00	4.78 ±	1.77 ±	3.52 ±	0.00	3.40 ±	0.24 ±	35.57 ±	1.63 ±	14.72 ±	35.05 ±
		2.98	0.75	2.18		2.16	0.01	12.01	0.51	6.99	2.09
NT/Cu 30	2.92 ±	3.27 ±	1.94 ±	3.56 ±	0.00	1.40 ±	0.17 ±	34.84 ±	1.35 ±	15.06 ±	35.59 ±
	1.09	0.98	0.41	1.50		0.47	0.03	6.1	0.21	5.65	0.89
NT/Cu 60	0.00	12.35 ±	0.24 ±	9.50 ±	0.00	10.92 ±	0.32 ±	6.64 ±	0.39 ±	30.73 ±	29.14 ±
		3.39	0.08	1.46		5.36	0.12	1.71	0.06	6.07	1.8
NT/Cu 90	1.15 ±	0.00	0.41 ±	0.71 ±	0.00	0.55 ±	0.00	12.42 ±	0.55 ±	59.90 ±	25.08 ±
	0.26		0.35	0.48		0.14		5.94	0.19	10.10	2.49

Table S3 Elemental composition of surfaces after immersion in TSB.

Sample	N	F	Na	Al	P	Cl	Ca	Ti	V	Cu	O
NT-Control	0.00	8.27 ±	0.26 ±	3.54 ±	0.38 ±	0.00	0.21 ±	57.57 ±	2.38 ±	0.00	31.84 ±
		0.82	0.024	0.33	0.06		0.02	5.03	0.20		3.76
Ti/Cu 60	2.07 ±	0.00	0.00	2.37 ±	0.63 ±	0.00	0.00	42.45 ±	1.84 ±	11.34 ±	39.94 ±
	0.96			0.43	0.07			5.82	0.26	5.31	0.43
NT/Cu 30	0.00	6.50 ±	0.00	3.64 ±	0.41 ±	0.00	0.27 ±	59.73 ±	2.29 ±	0.00	31.94 ±
		0.49		0.22	0.04		0.03	3.47	0.22		2.47
NT/Cu 60	0.00	4.22 ±	0.00	2.83 ±	0.86 ±	0.00	0.31 ±	46.92 ±	1.98 ±	14.03 ±	31.80 ±
		0.46		0.15	0.03		0.02	2.20	0.17	1.93	0.87
NT/Cu 90	0.00	0.88 ±	0.00	1.07 ±	0.20 ±	0.14 ±	0.00	23.59 ±	1.02 ±	45.86 ±	58.26 ±
		0.12		0.35	0.03	0.00		4.52	0.16	5.91	1.03