

Response to the comments on “Improving the Cycling Stability of Lithium Metal Anodes through  
Separator Modification with Nano-Molybdenum Powder”

## Supporting Information

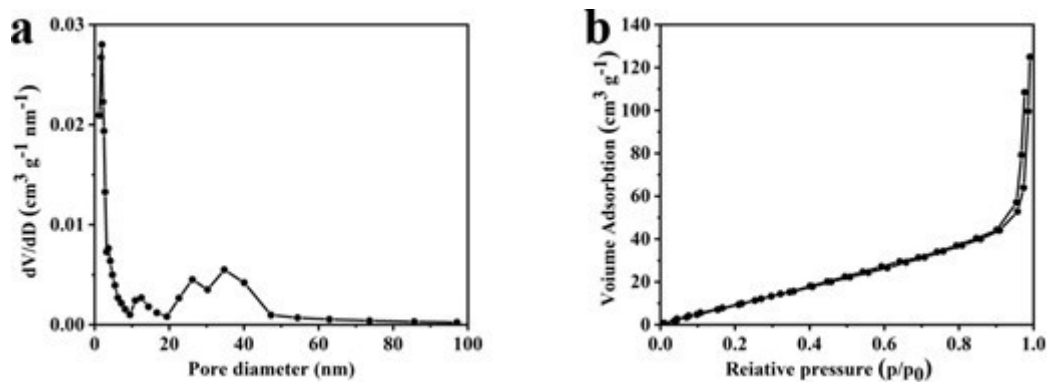
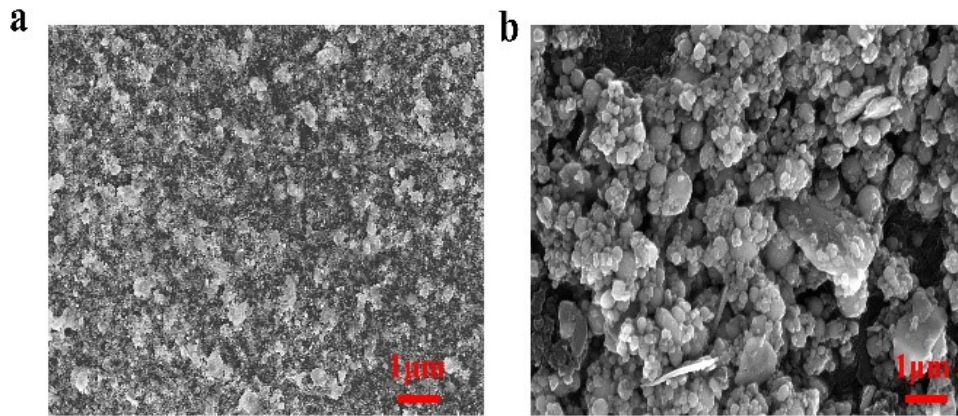


Figure.S1 Pore size distribution (a) and adsorption isotherm (b) of PPFNM separator



**Figure.S2** SEM of Mo (a) and the Mo coating after cycling in a Li-S system (b)

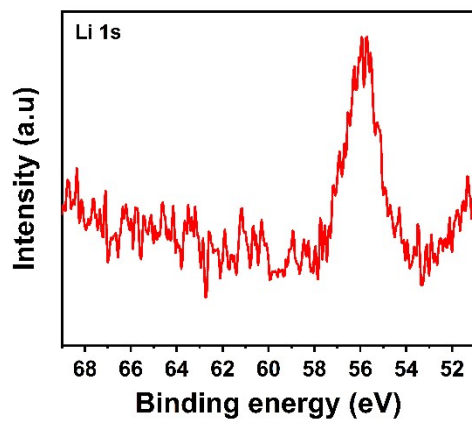
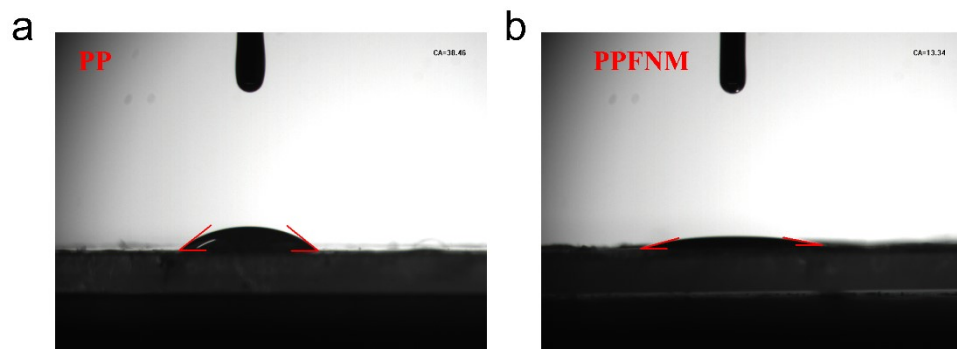


Figure.S3 Li 1s XPS spectra after cycle



**Figure.S4** Contact Angle measurement diagram (a) PP (b) PPFNM diaphragm.