

Aug 29, 2024

Subject: Response to Data Request for Inhibition Zone Study

Dear Editor,

We are writing to provide the raw data regarding the inhibition zone measurements for each day, as requested. Below, we have included the data from the first test (I) and second formal runs (II), specifically corresponding to Figure 6 of our manuscript. The raw data of first test run reflects inhibition zones of both the raw HBP and HBP/LDH samples, observed from day 1 through day 5 across three replicate experiments, labeled as 二, 三, and 四, with varying HBP/LDH weight ratios.

In the first run (I), the experiment concluded on day 5 as the pristine HBP solution became fully overgrown with bacteria, leading the inhibition zones indistinguishable. In contrast, the HBP/LDH intercalated solutions exhibited gradual expansion of the inhibition zones. Please note that the data for the fifth day is not presented in this initial run as the assessment was conducted visually without photographic documentation, which led us to perform the second formal experiment.

Figure 6 in our manuscript represents the results from the second run (II), where data was collected on days 1, 3, and 5, informed by the observations made in the first run. We confirm that there are observable differences between the photographs taken on days 1 and 3, as depicted in Figure 6. Specifically, differences in the appearance of the light spot in the lower right corner between sample (b) and (d), as well as different brightness between sample (a) and (c), were noted.

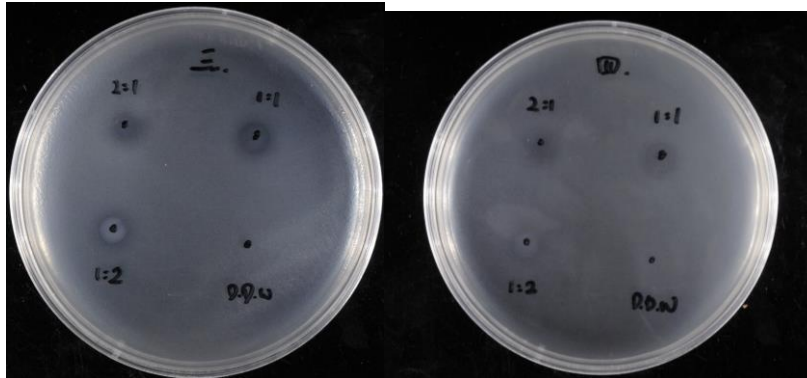
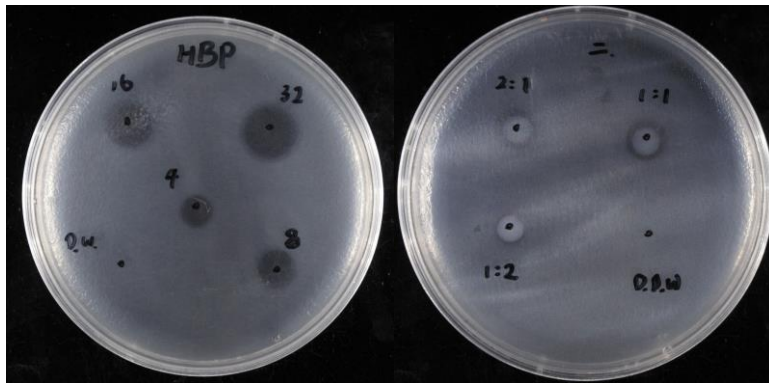
We are currently in the process of retrieving the original information and confirm that the original Figure 6 represents the correct data. We kindly ask that you re-examine the newly provided raw data and continue with the review process. We appreciate your understanding and assistance in this manuscript and look forward to your further communication.

With best regards,

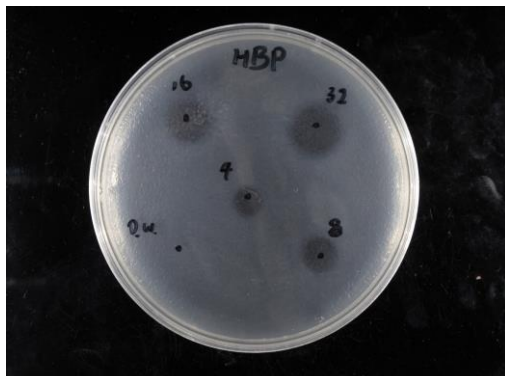
Tzong-Yuan Juang, Ph.D.  
China Medical University, Taiwan

(I) Raw data regarding the inhibition zone measurements for each day in first test run

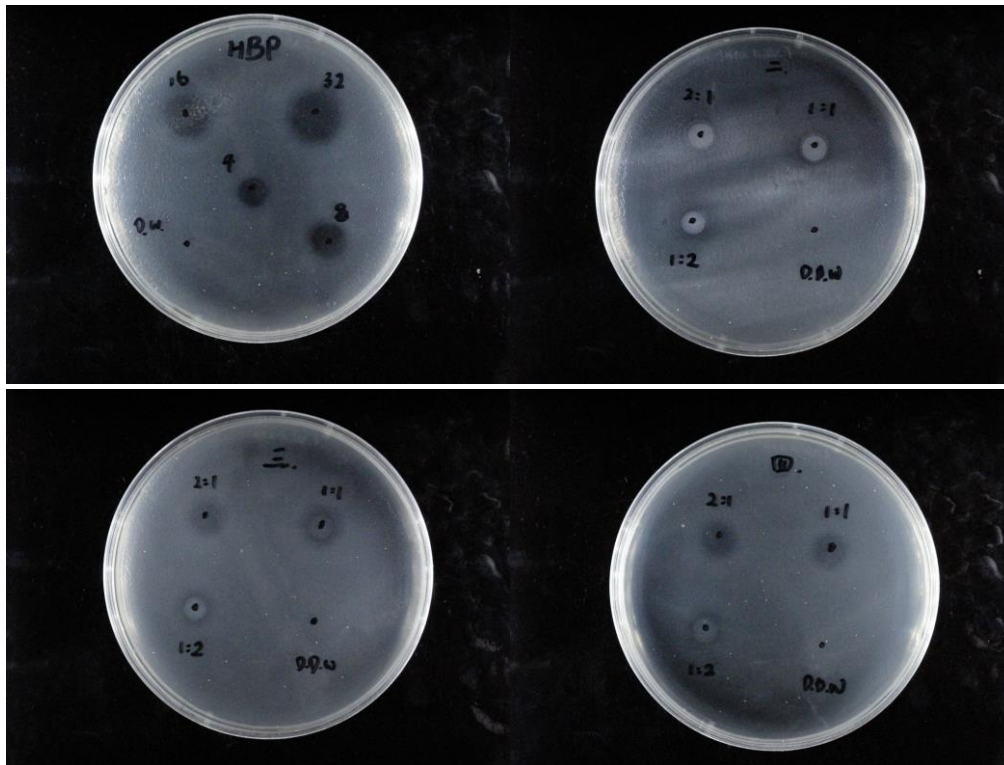
Day 1



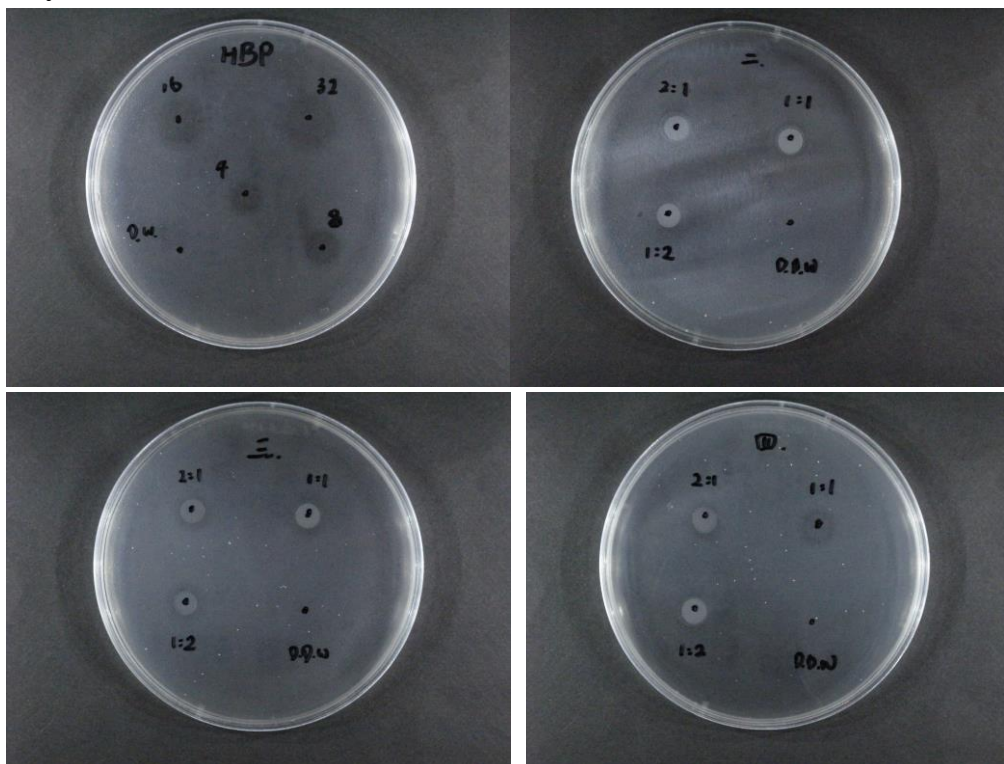
Day 2



Day 3

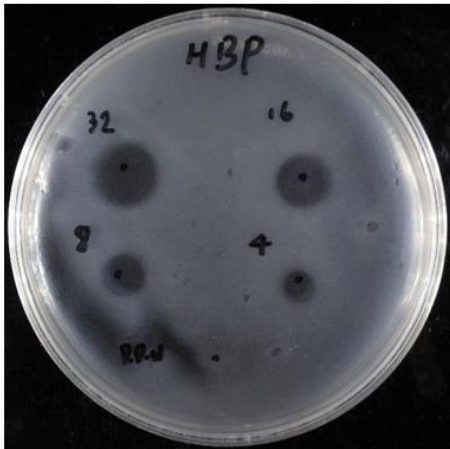


**Day 4**

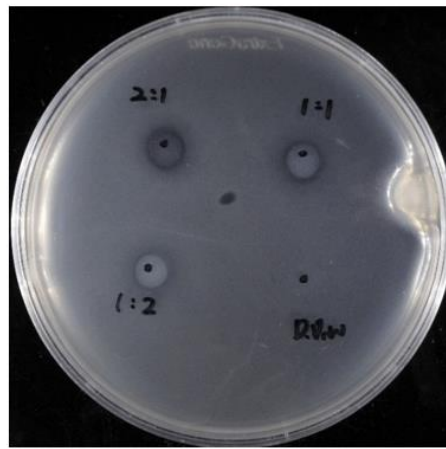


**Day 5:** The experiment concluded on day 5 as the pristine HBP solution became fully overgrown with bacteria, leading the inhibition zones indistinguishable. In contrast, the HBP/LDH intercalated solutions exhibited gradual expansion of the inhibition zones.

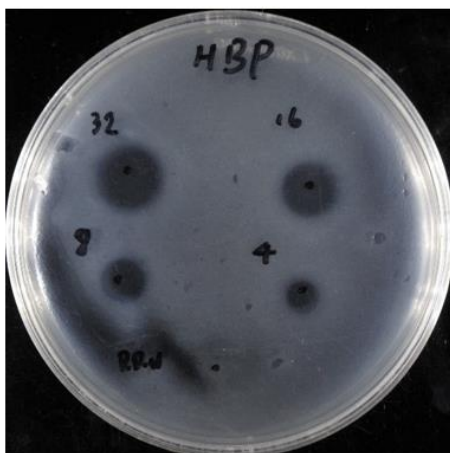
(II) Figure 6 was collected on days 1, 3, and 5, informed by the observations made in the first run.



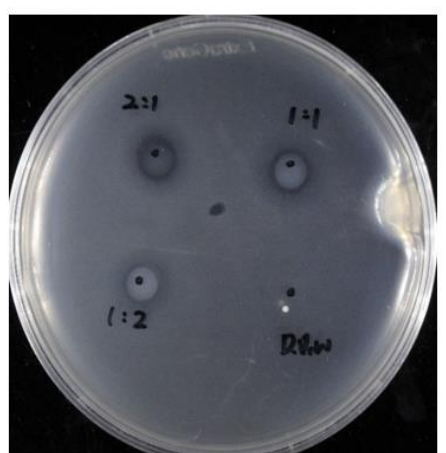
(a) HBPs at different concentrations as mg/ml.



(b) Intercalation of HBPs at different HBP/LDH weight ratios.



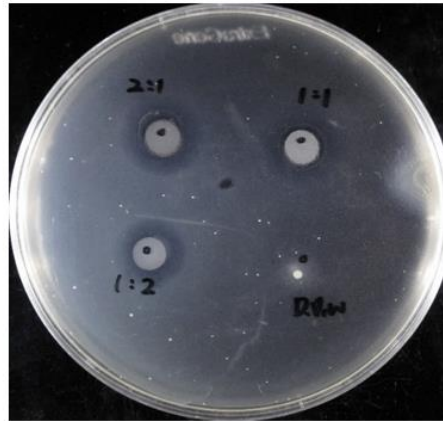
(c) HBPs at different concentrations as mg/ml.



(d) Intercalation of HBPs at different HBP/LDH weight ratios.



(e) HBPs at different concentrations as mg/ml.



(f) Intercalation of HBPs at different HBP/LDH weight ratios.

Figure 6. Inhibition zones of (a, c, e) pristine HBPs and (b, d, f) HBP/LDH at different HBP/LDH weight ratios at days (a, b) 1; (c, d) 3; (e, f) 5.