

Supplementary Information

Impact of Aspect Ratio and Crystal Size Distribution of L-Glutamic Acid Formed by Cooling Crystallization on Drying Characteristics

Jong Beom Lee^a, Yu-Jin Kim^a, Kwang-Joo Kim^a, Geon-Hee Kim^b, Chanmin Lee^c,

Young Duk Park^d, Jung-Chul An^e, Hyenoseok Yi^e, Kyeong-seok Oh^f, Joo-Il Park^{g*}

^a*Department of Chemical & Biological Engineering, Hanbat National University, Daejeon 34158, Republic of Korea*

^b*Department of Mechanics-Materials Convergence System Engineering, Hanbat National University, Daejeon 34158, Republic of Korea*

^c*Green and Sustainable Materials R&D Department, Research Institute of Clean Manufacturing System, Korea Institute of Industrial Technology, 89 Yangdaegiro-gil, Ipjangmyeon, Cheonan-si 31056, Republic of Korea*

^d*Innovation Corporation for Smart Optics, Hanbat National University, Daejeon 34014, Republic of Korea*

^e*Carbon Materials Research Group, Research Institute of Industrial Science & Technology (RIST), Pohang 11 37673, Republic of Korea*

^f*Department of Chemical & Biological Engineering, Inha Technical College, Incheon 22212, Republic of Korea*

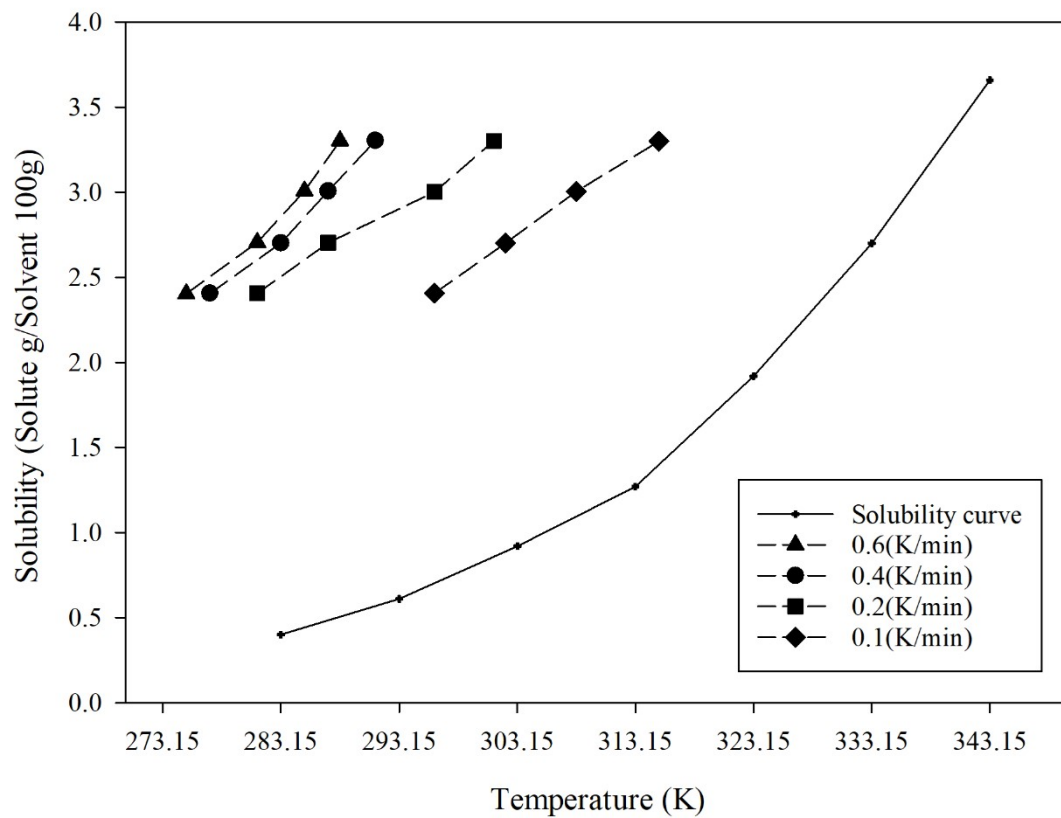
^g*Department of Chemical & Biological Engineering, Hanbat National University, Daejeon 34158, Republic of Korea*

** Corresponding authors:*

Tel.: +82 42 8211530, E-mail address: jipark94@hanbat.ac.kr (J. -I Park)

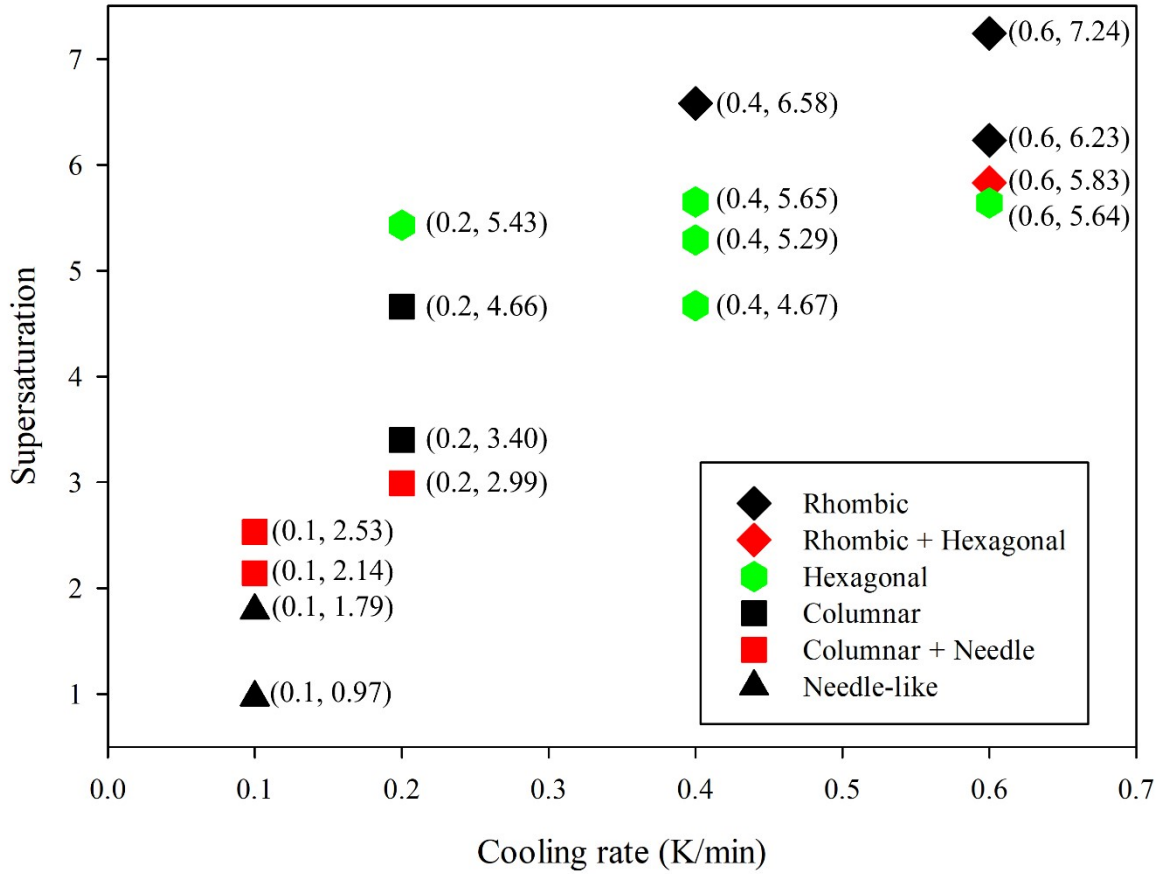
Supplementary Information 1.

Metastable zone limit of β -form LGA solution in this study



Supplementary Information 2.

Supersaturation depending on the cooling rate in spontaneous nucleation

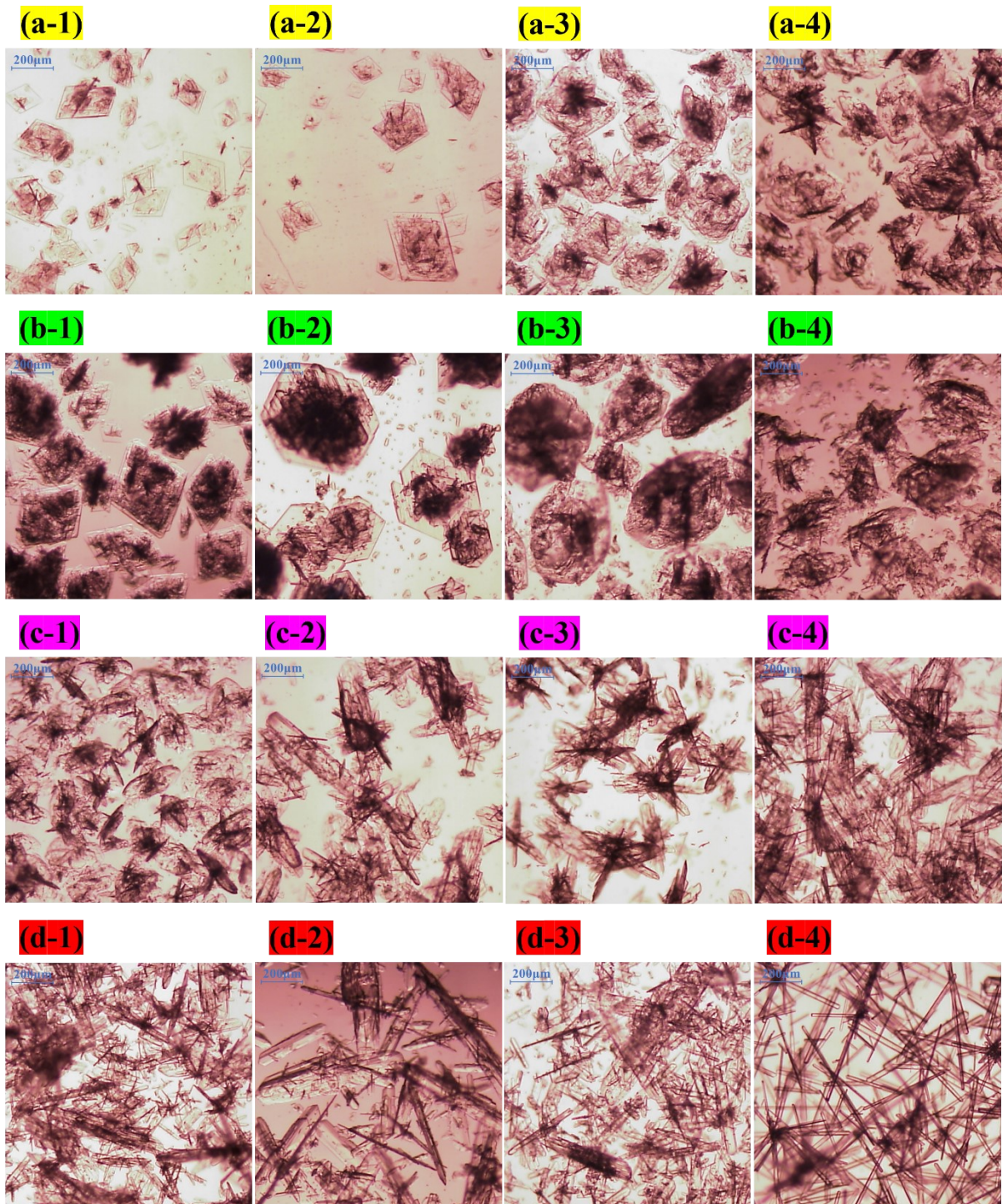


From equation 1 and 2: $\ln(x_{Solute}) = 11.5344 \ln(T_{SN}) - 72.7282$, $\sigma_{SN} = \frac{C - C_{sat}}{C_{sat}}$

(T_{SN} : Temperature at which spontaneous nucleation occurs, σ_{SN} : Supersaturation of spontaneous nucleation)

Supplementary Information 3.

OM of crystals according to the cooling rate and supersaturation (a-series: 0.6K/min, b-series: 0.4K/min, c-series: 0.2K/min, d-series: 0.1K/min)



Supplementary Information 4.

Temperature profile according to method of cooling control

