

**Remarkable Utilizing quinazoline-based homosulfonamide for in vitro  
cytotoxic effects with triple kinase inhibition activities:**

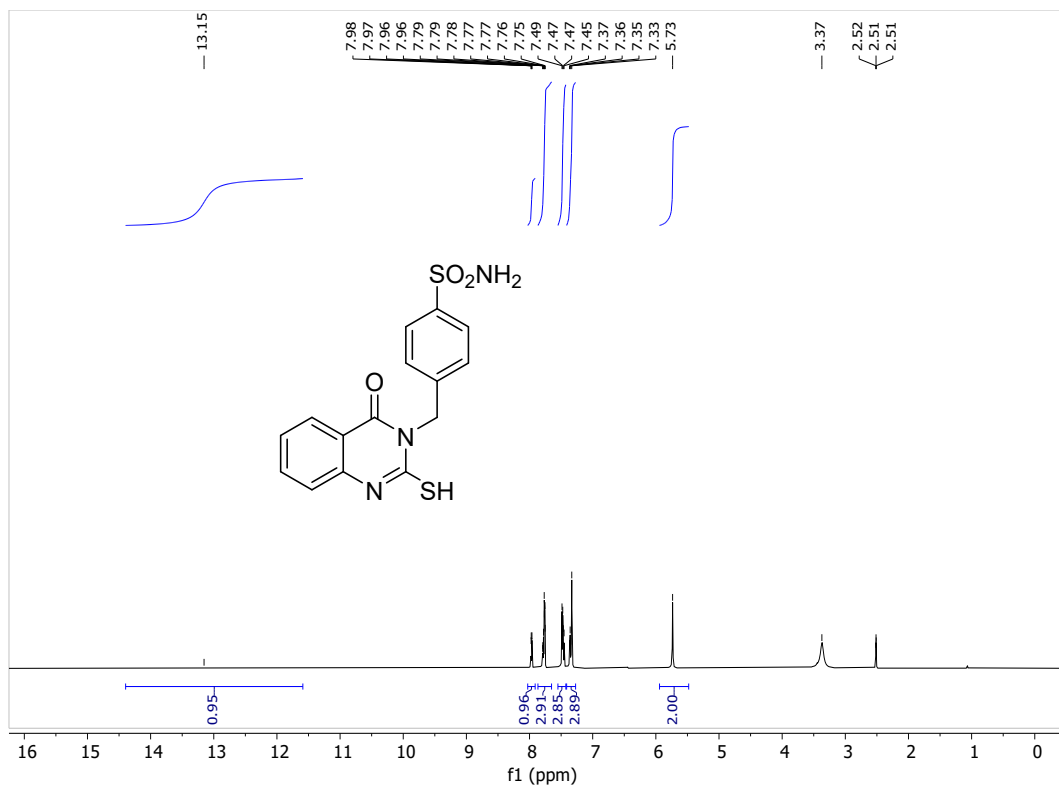
**Cell cycle analysis and molecular docking profile**

**Adel S. El-Azab<sup>a\*</sup>, Alaa A.- M. Abdel-Aziz<sup>a</sup>, Ahmed H. Bakheit<sup>a</sup>, Hamad M. Alkahtani<sup>a</sup>, Ahmad J.  
Obaidullah<sup>a</sup>, Mohamed M. Hefnawy<sup>a</sup>, Ibrahim A. Al-Suwaidan<sup>a</sup>**

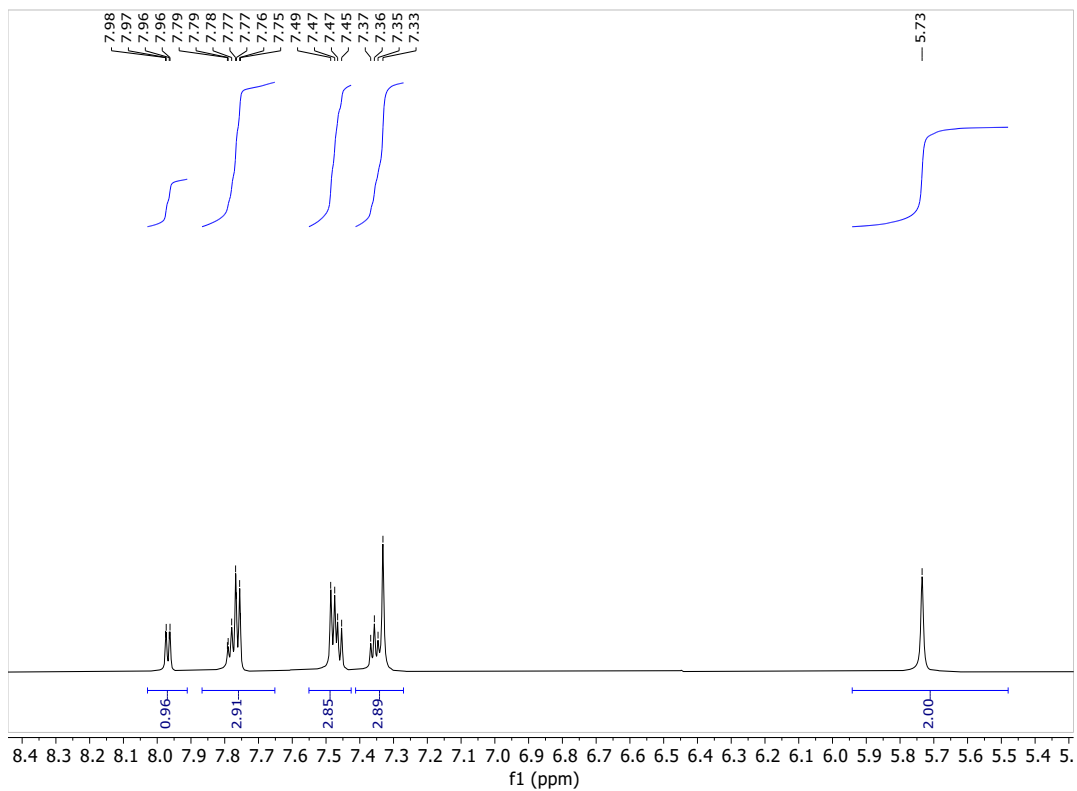
*<sup>a</sup>Department of Pharmaceutical Chemistry, College of Pharmacy, P.O. Box 2457, King Saud University,  
Riyadh 11451, Saudi Arabia*

**Corresponding Author:** Adel S. El-Azab, Department of Pharmaceutical Chemistry, College of Pharmacy, P.O. Box 2457, King  
Saud University, Riyadh 11451, Saudi Arabia (E-mail: adelazab@ksu.edu.sa).

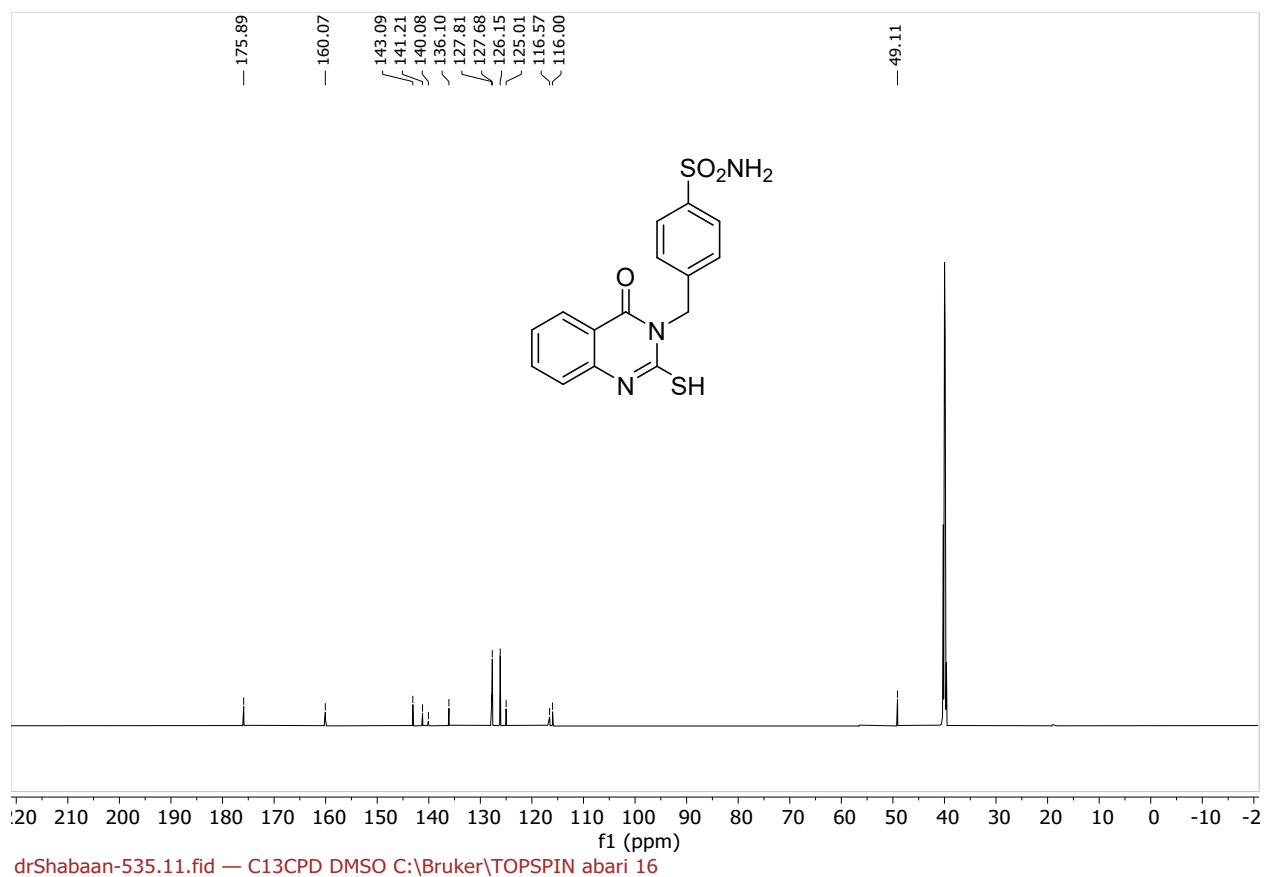
***NMR & Mass Spectroscopic Data***

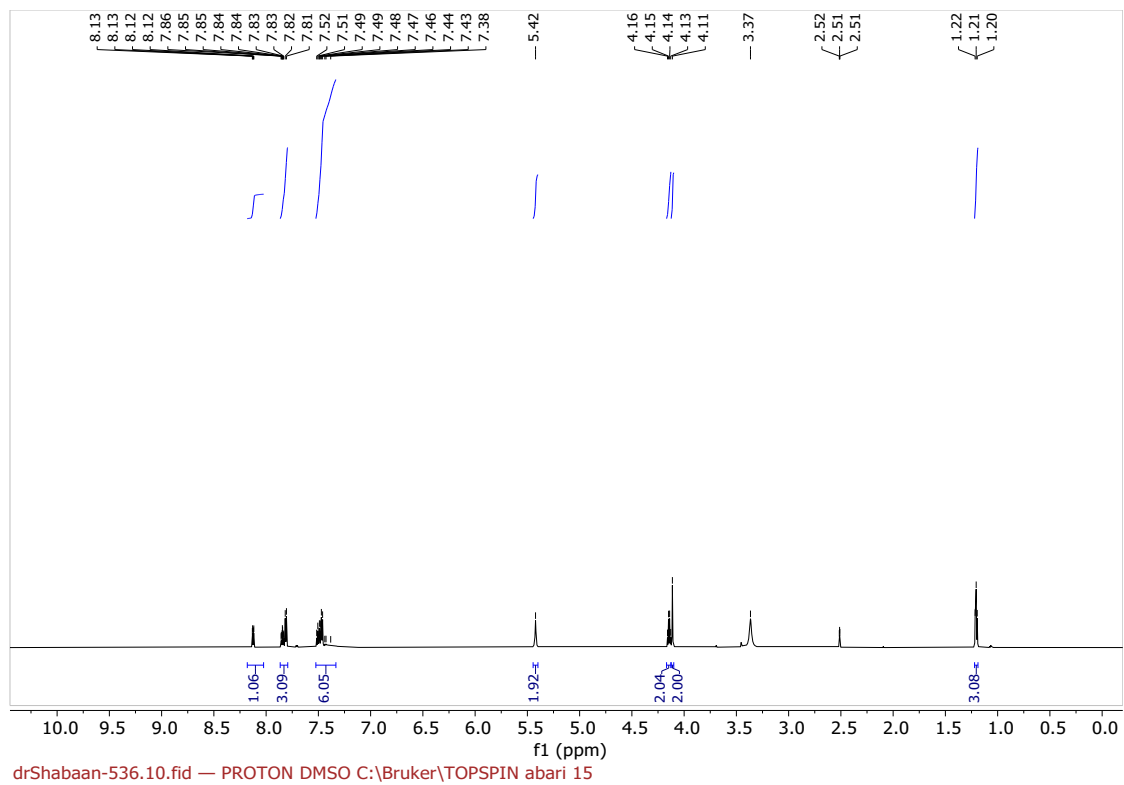
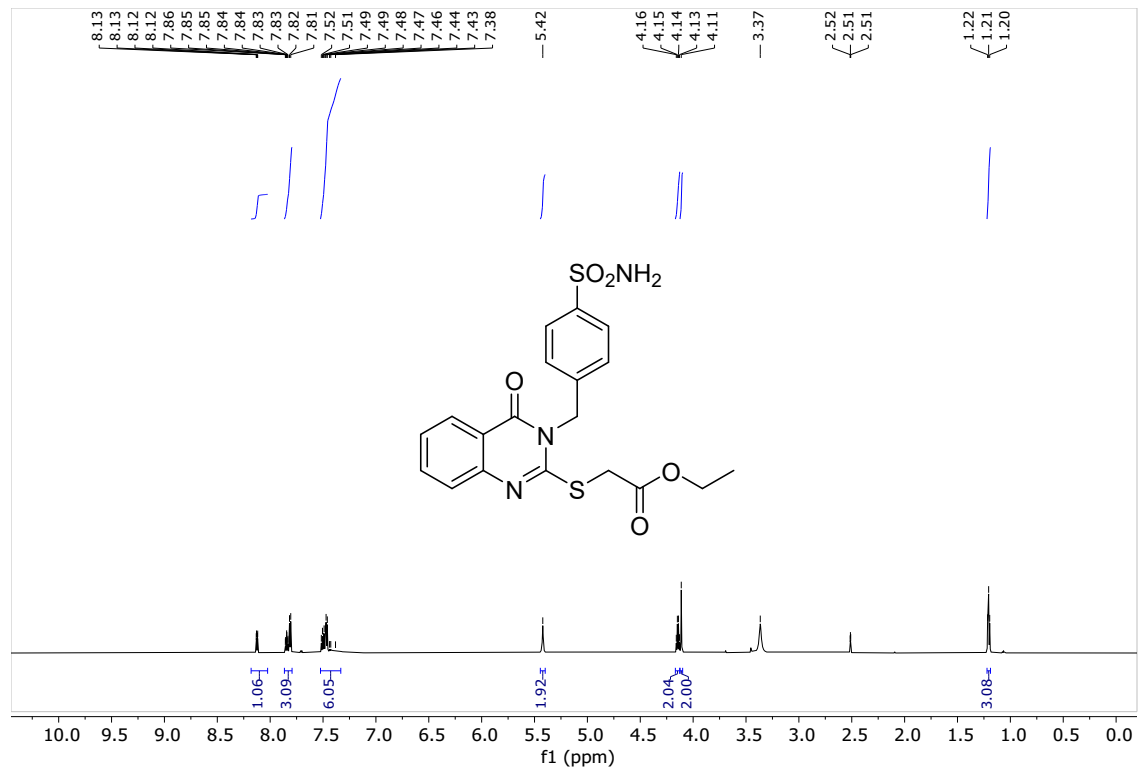


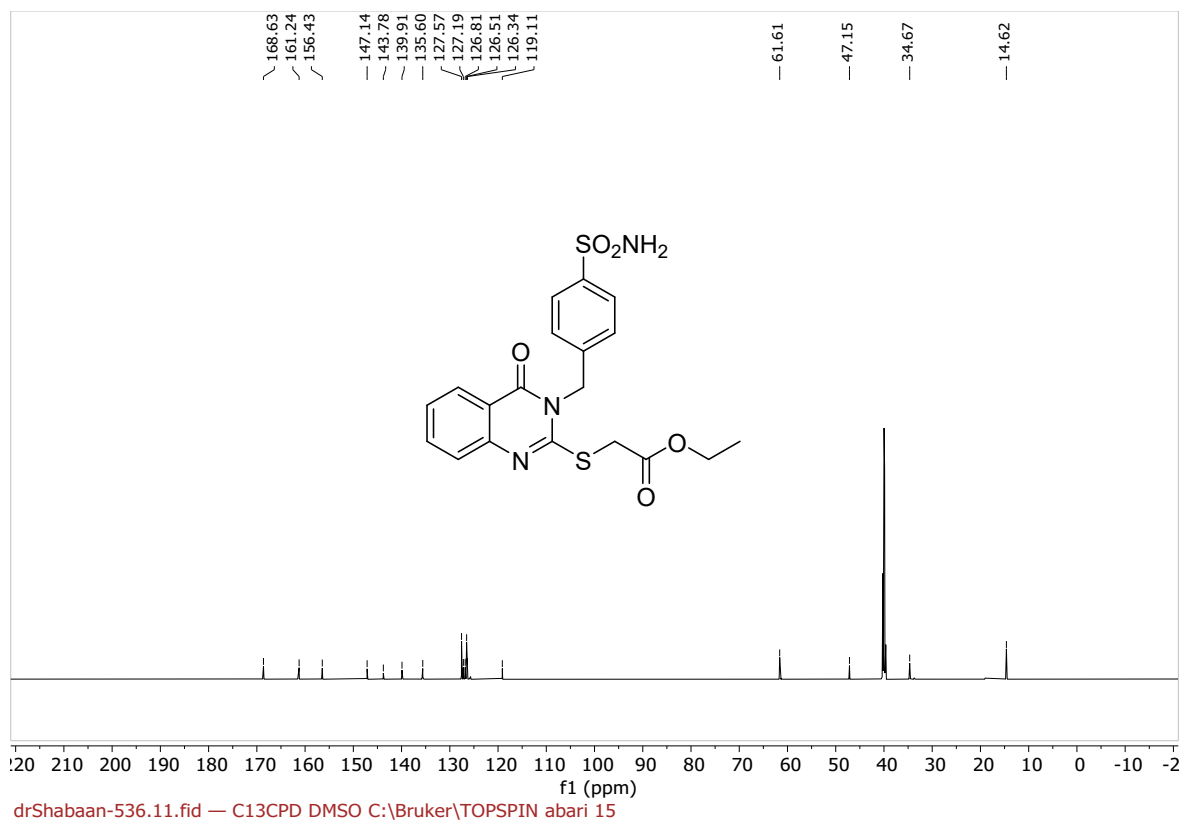
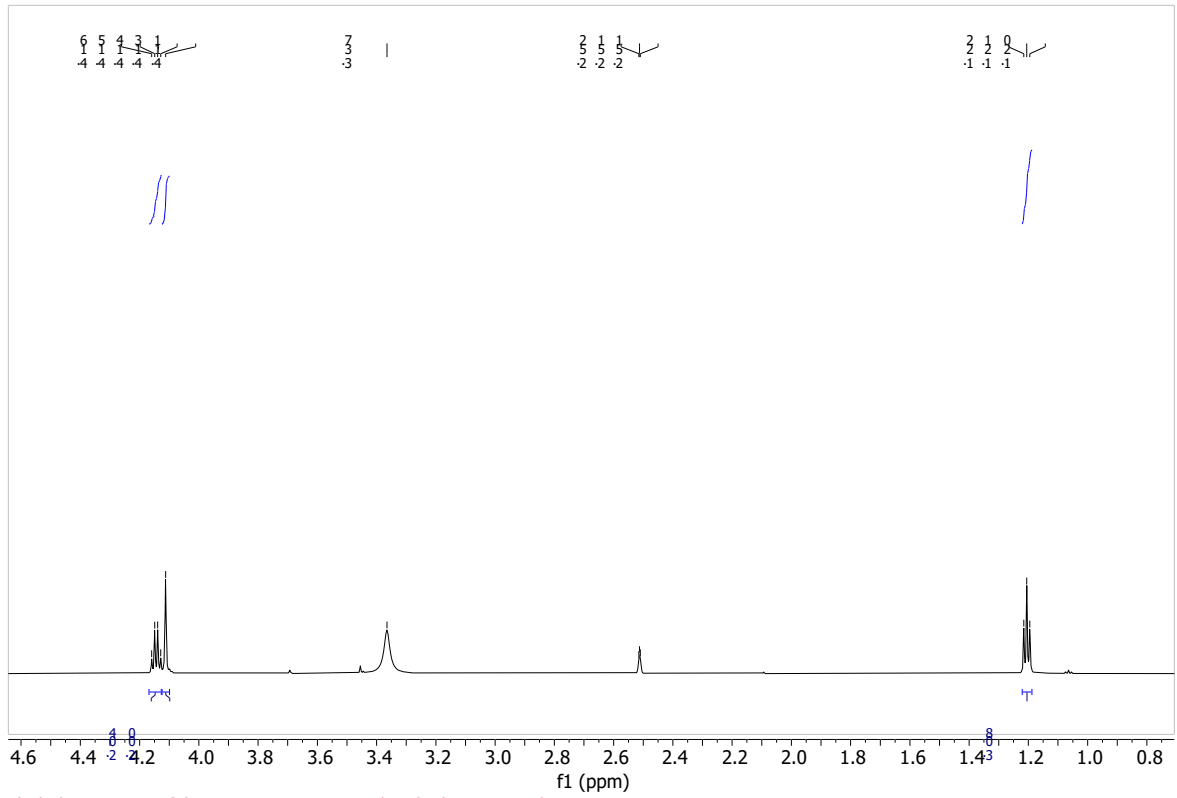
drShabaan-535.10.fid — PROTON DMSO C:\Bruker\TOPSPIN abari 16

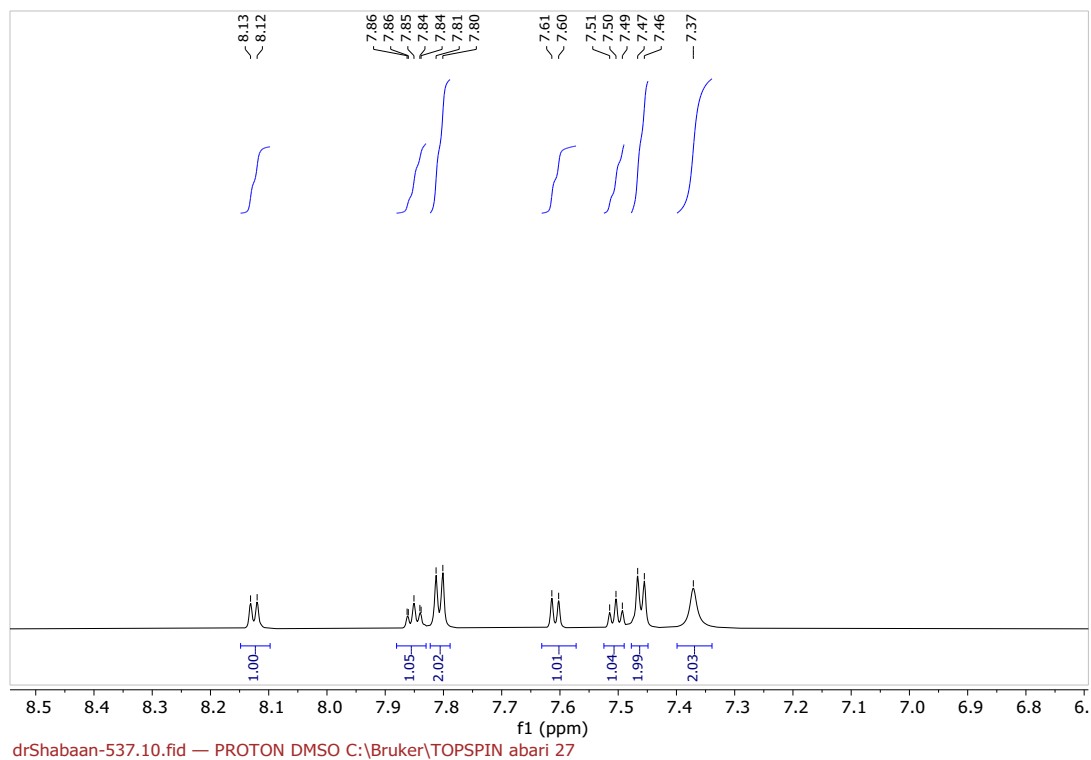
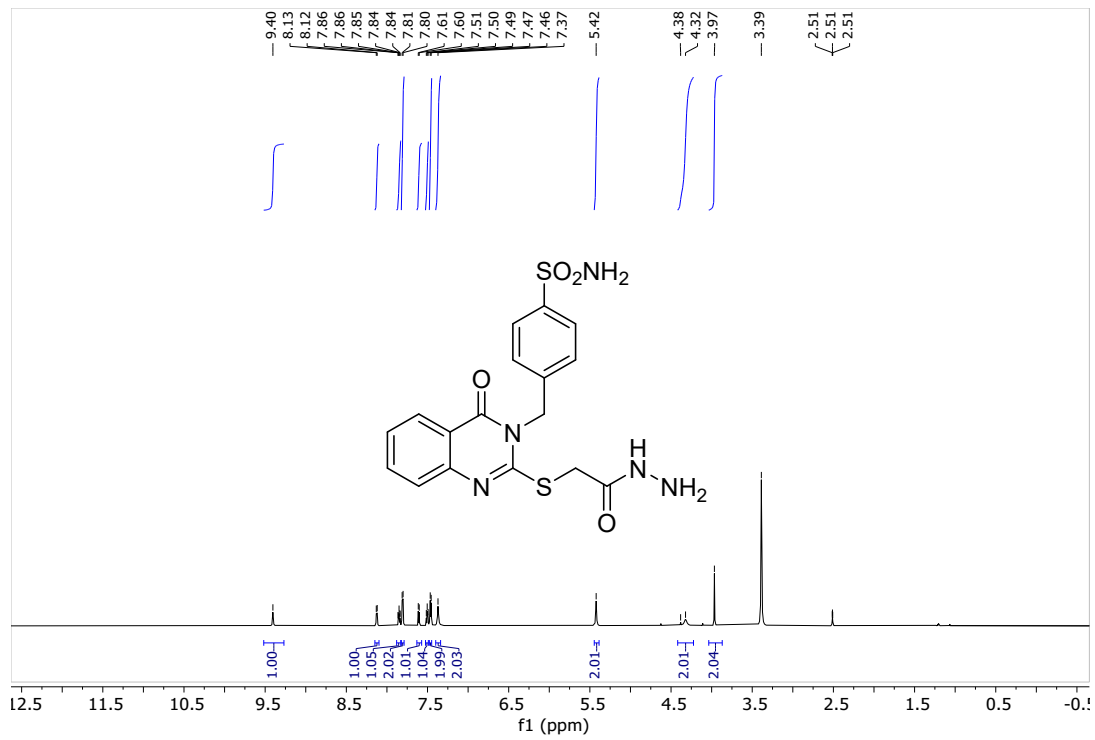


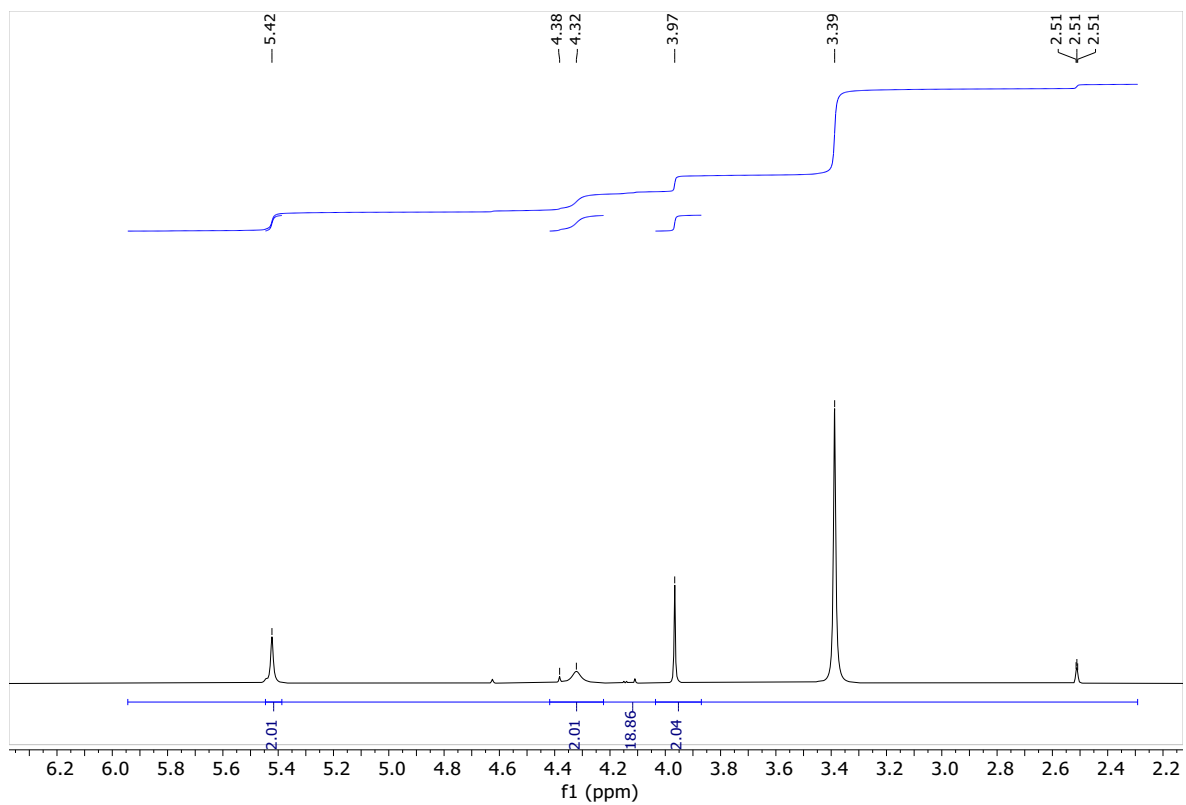
drShabaan-535.10.fid — PROTON DMSO C:\Bruker\TOPSPIN abari 16



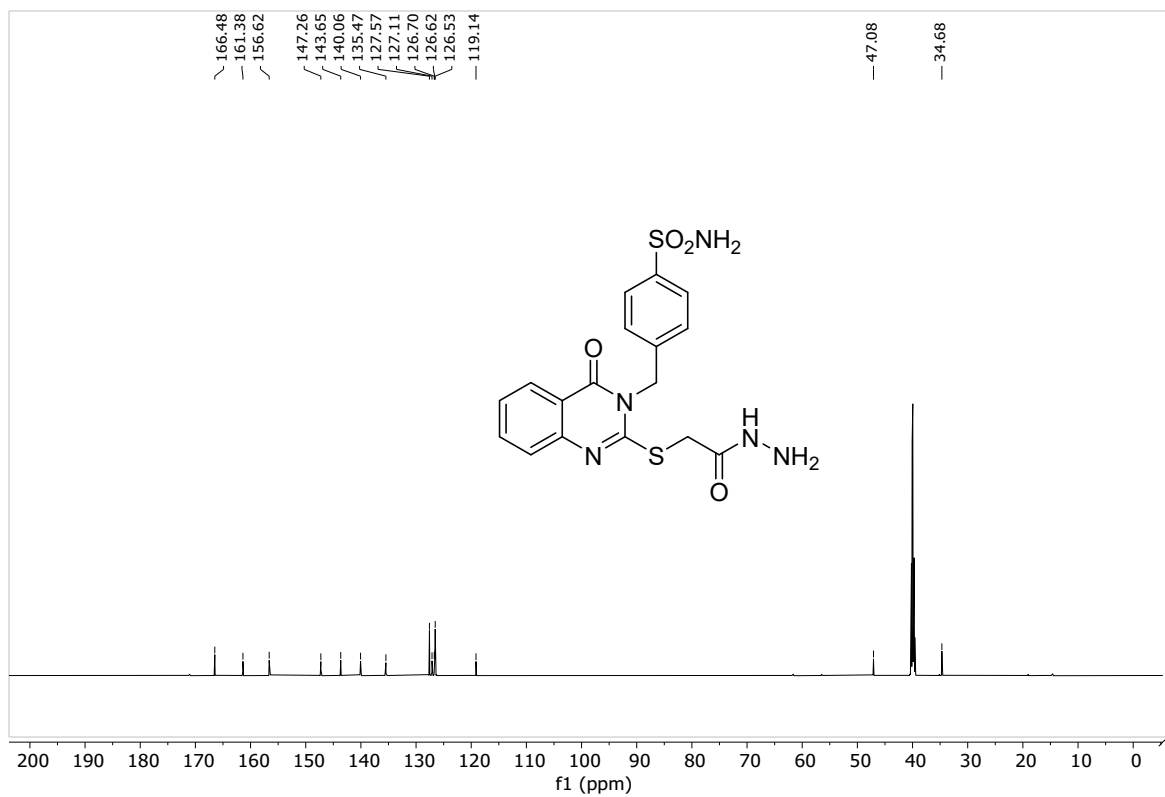




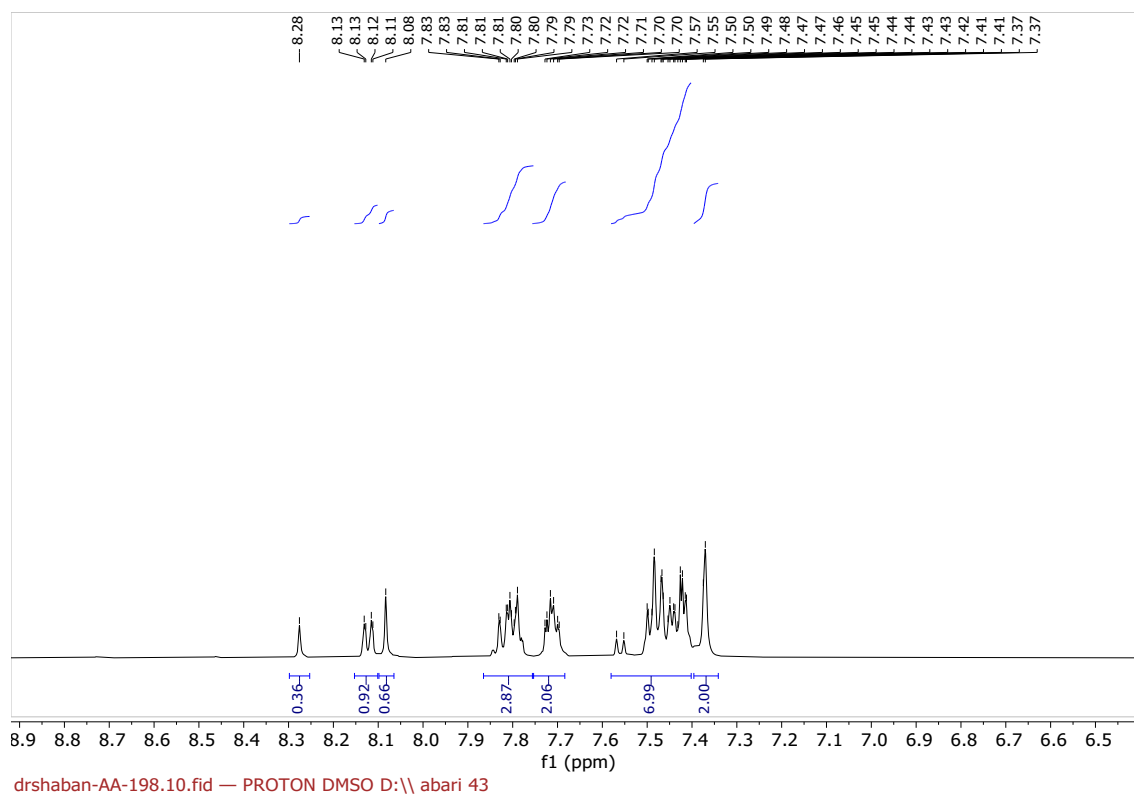
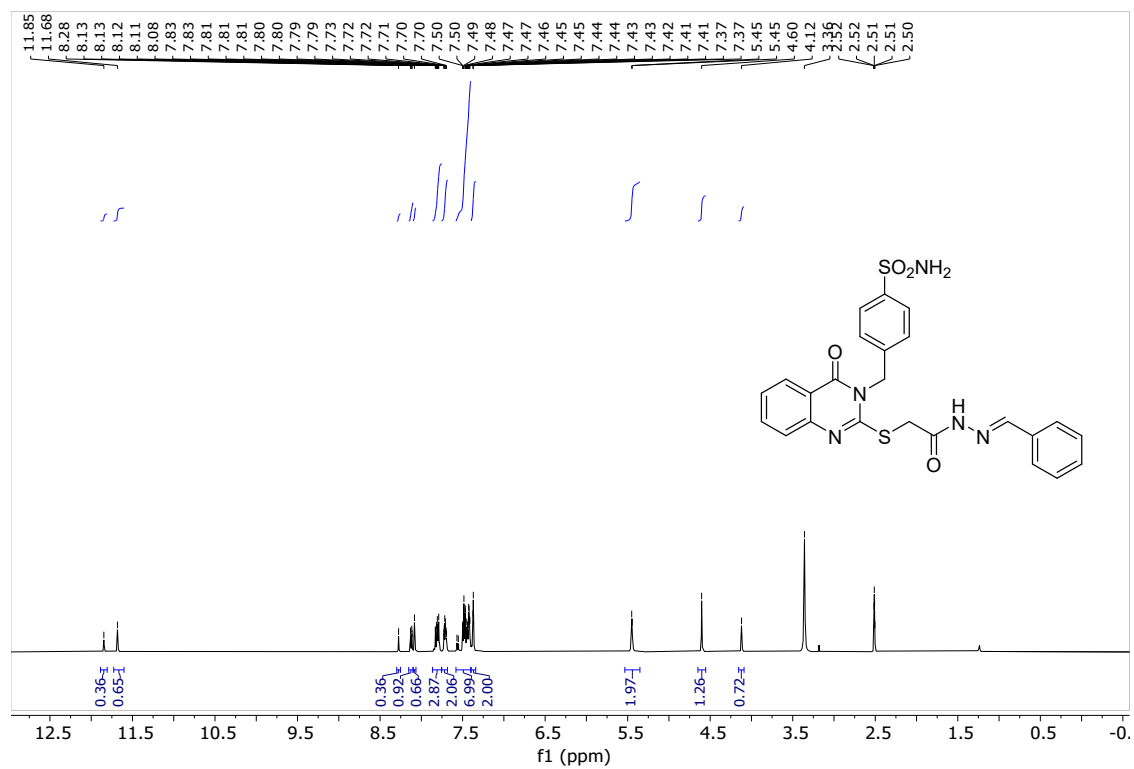




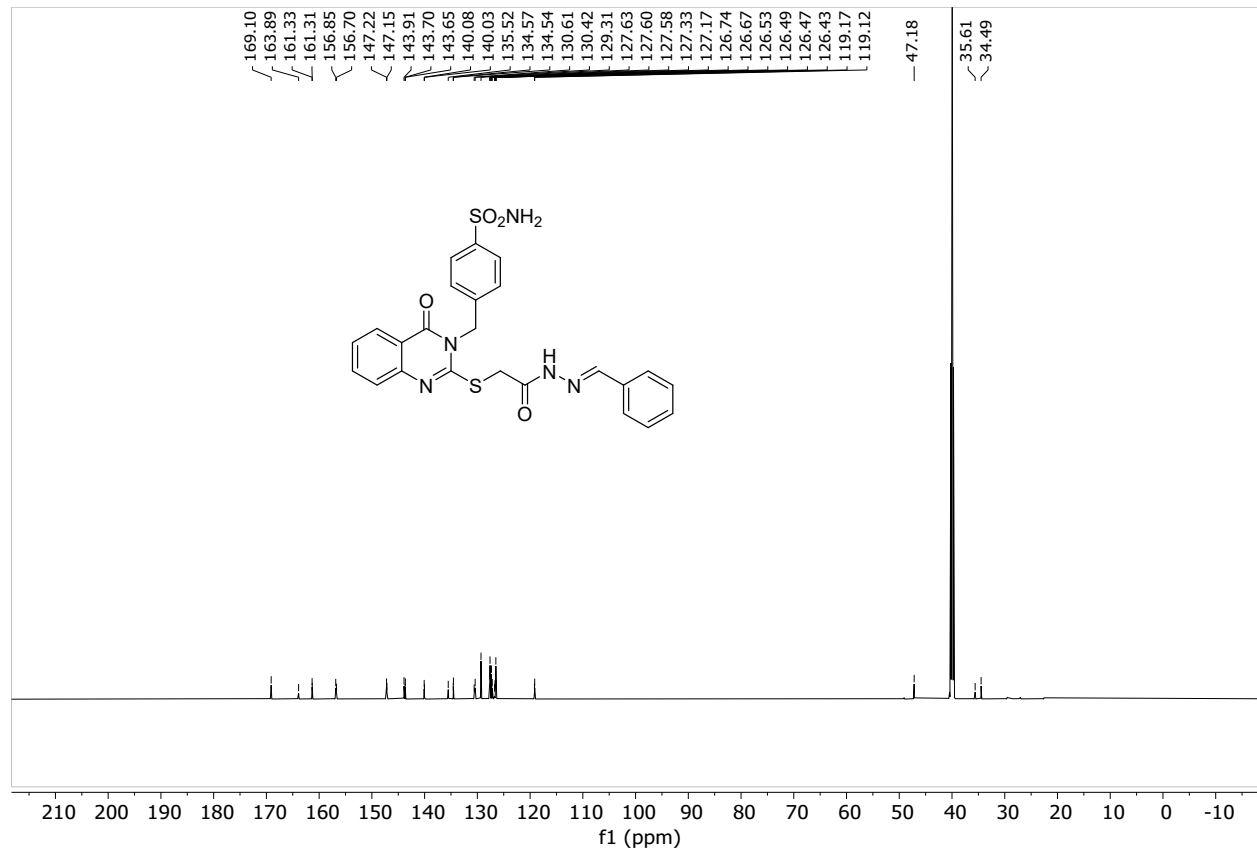
drShabaan-537.10.fid — PROTON DMSO C:\Bruker\TOPSPIN abari 27

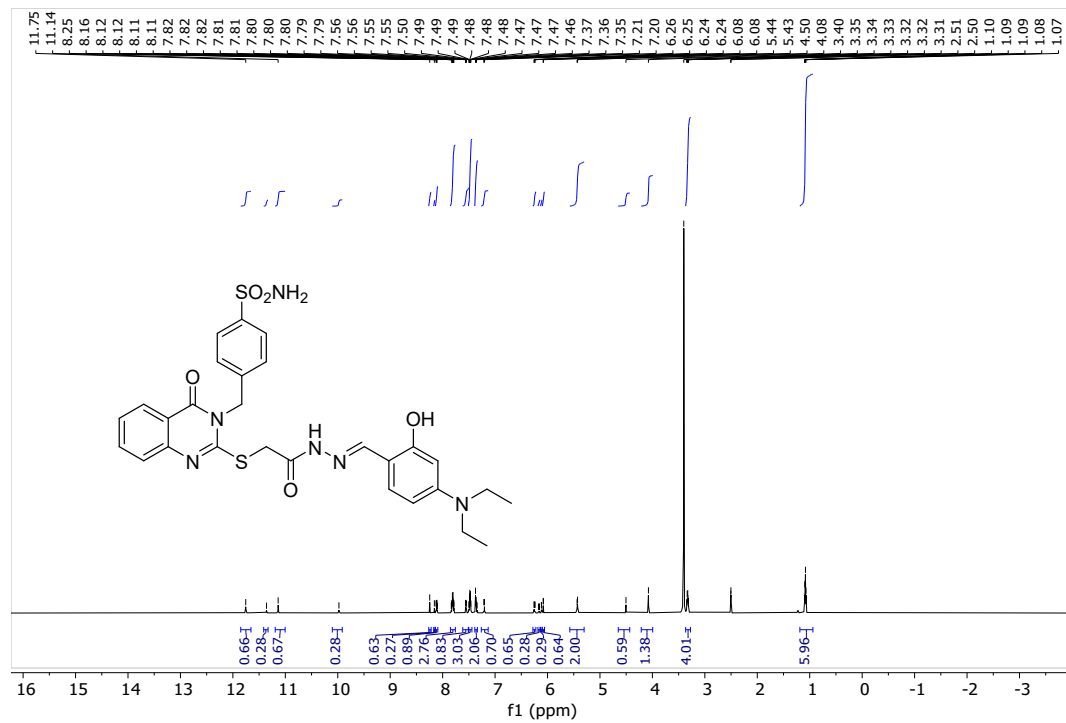


drShabaan-537.11.fid — C13CPD DMSO C:\Bruker\TOPSPIN abari 27

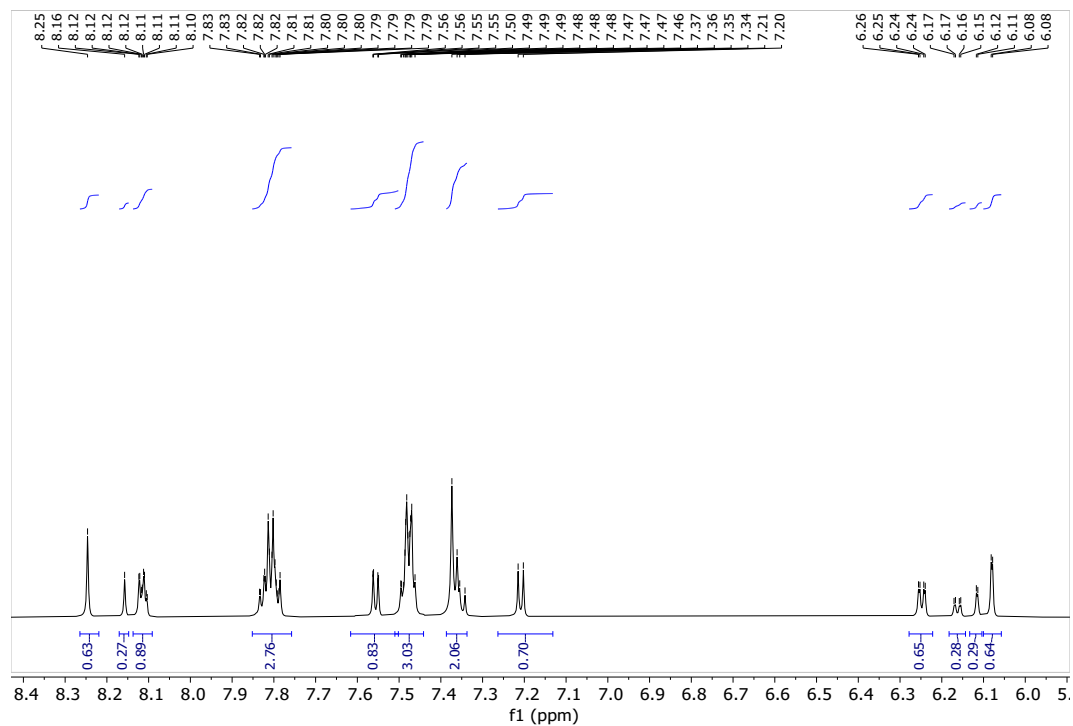




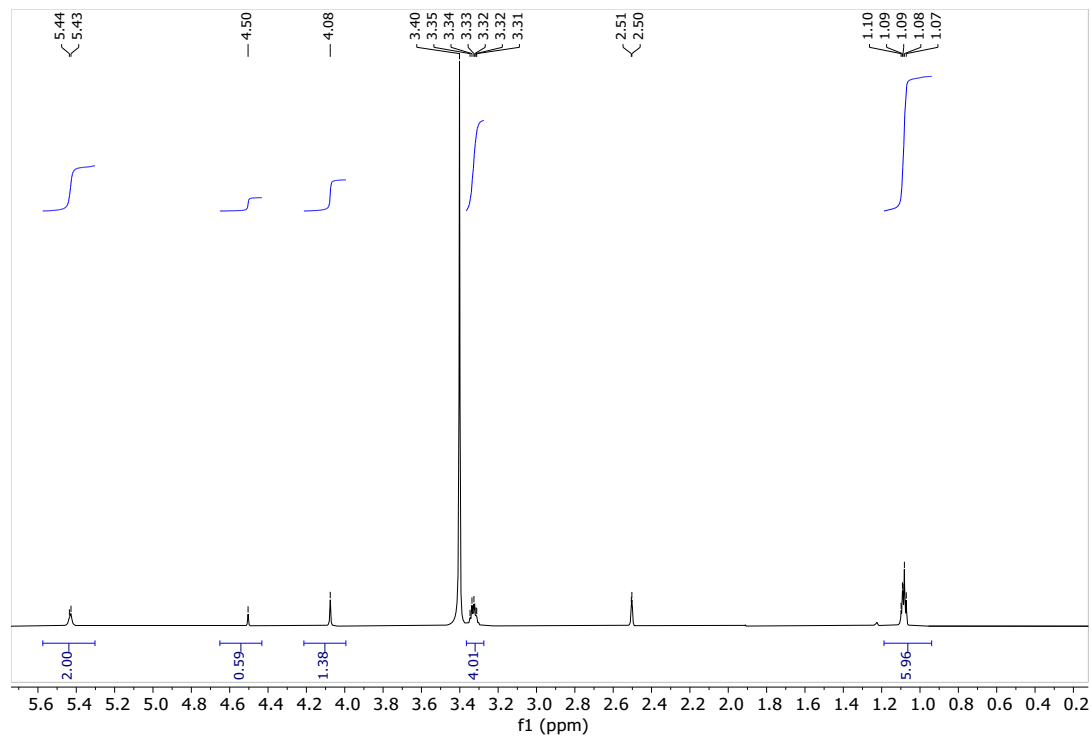




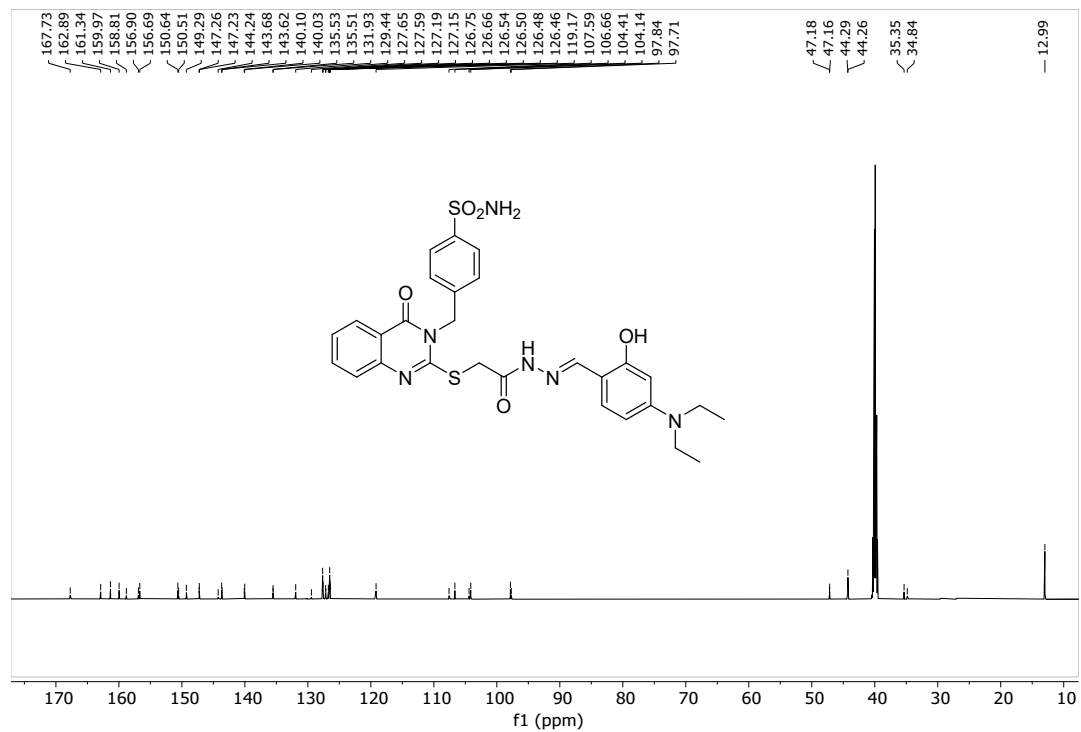
drshabaan-AA-299.10.fid — PROTON DMSO {C:\Bruker\TOPSPIN} abari 41



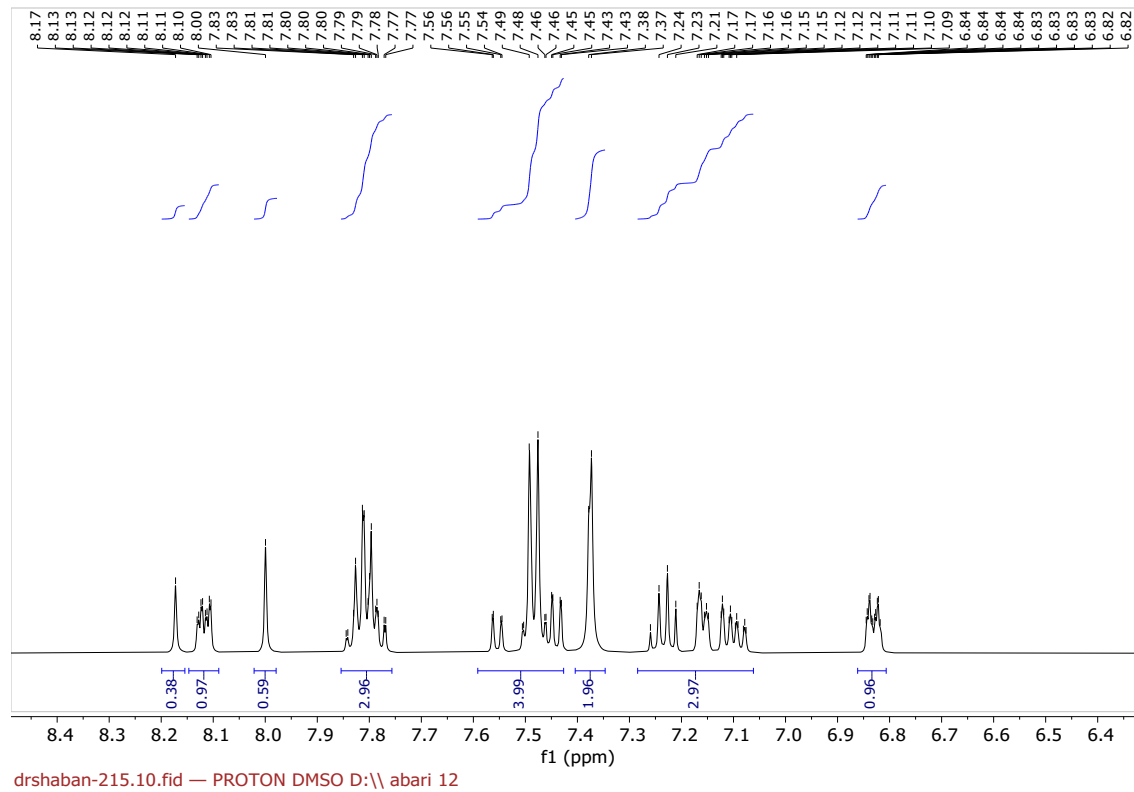
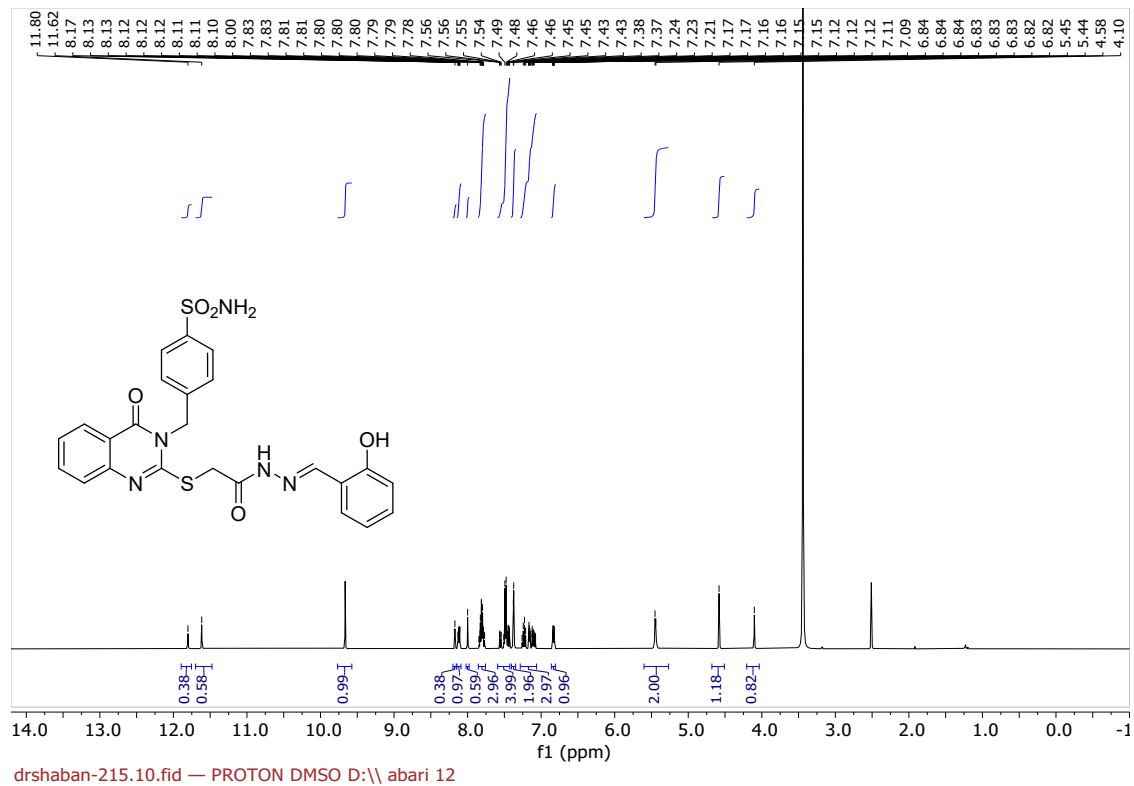
drshabaan-AA-299.10.fid — PROTON DMSO {C:\Bruker\TOPSPIN} abari 41

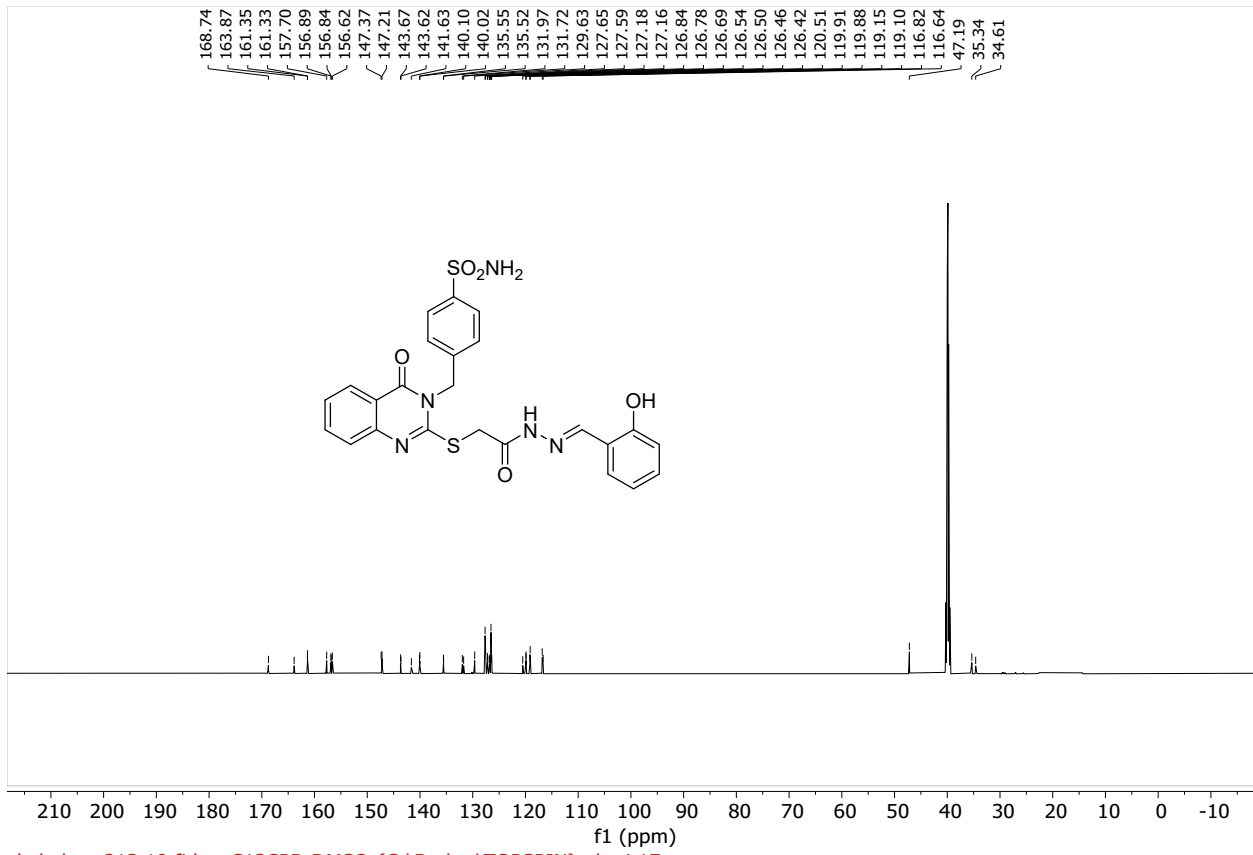


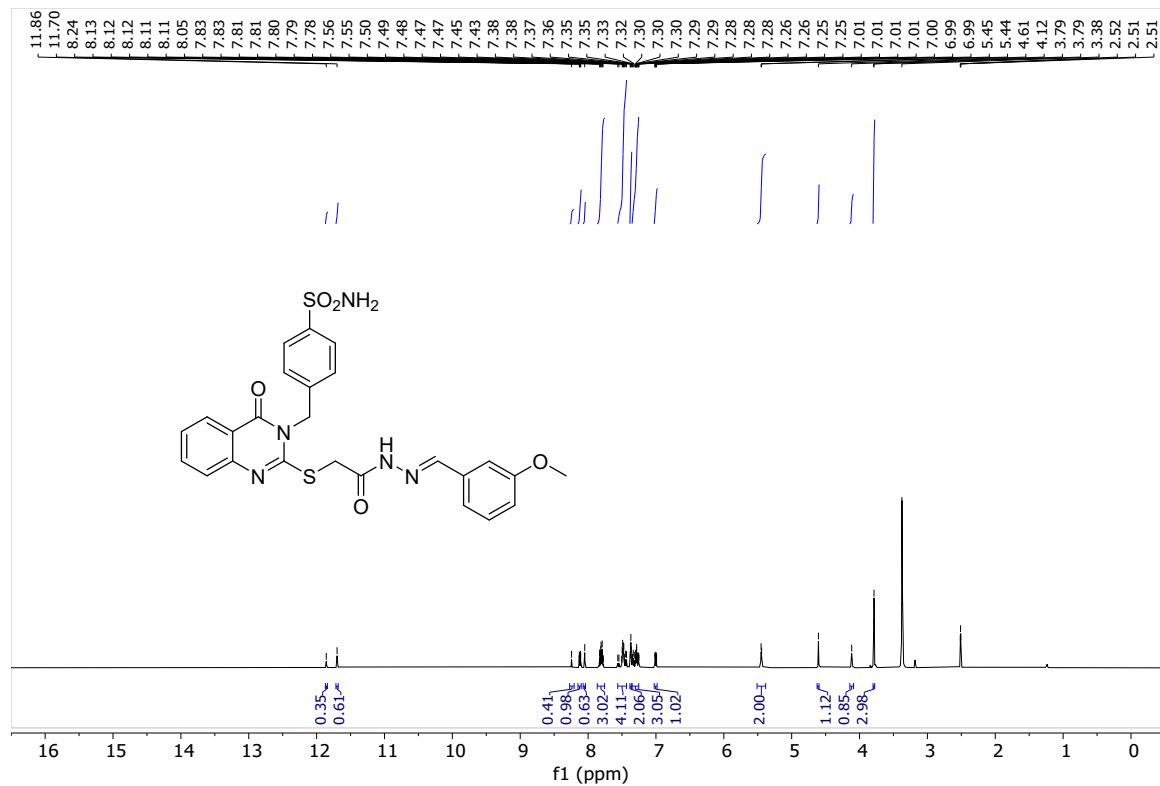
drshabaan-AA-299.10.fid — PROTON DMSO {C:\Bruker\TOPSPIN} abari 41



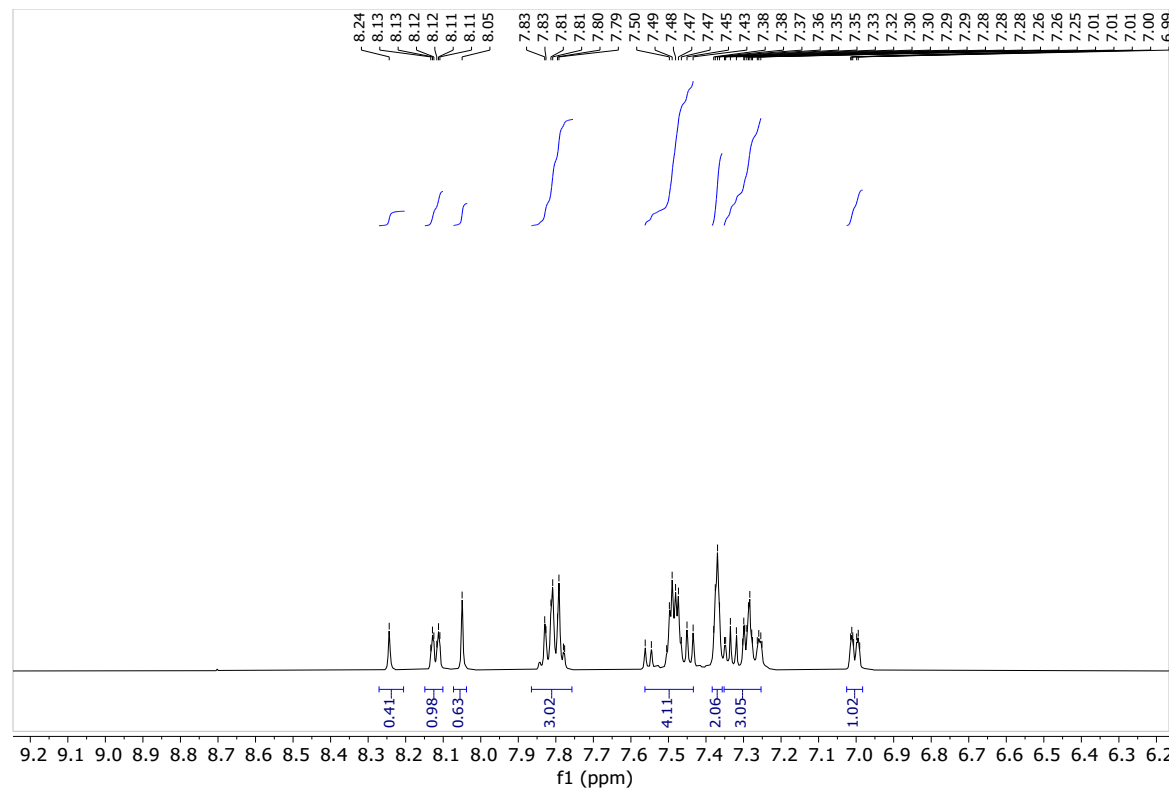
drshabaan-AA-299.11.fid — C13CPD DMSO {C:\Bruker\TOPSPIN} abari 41



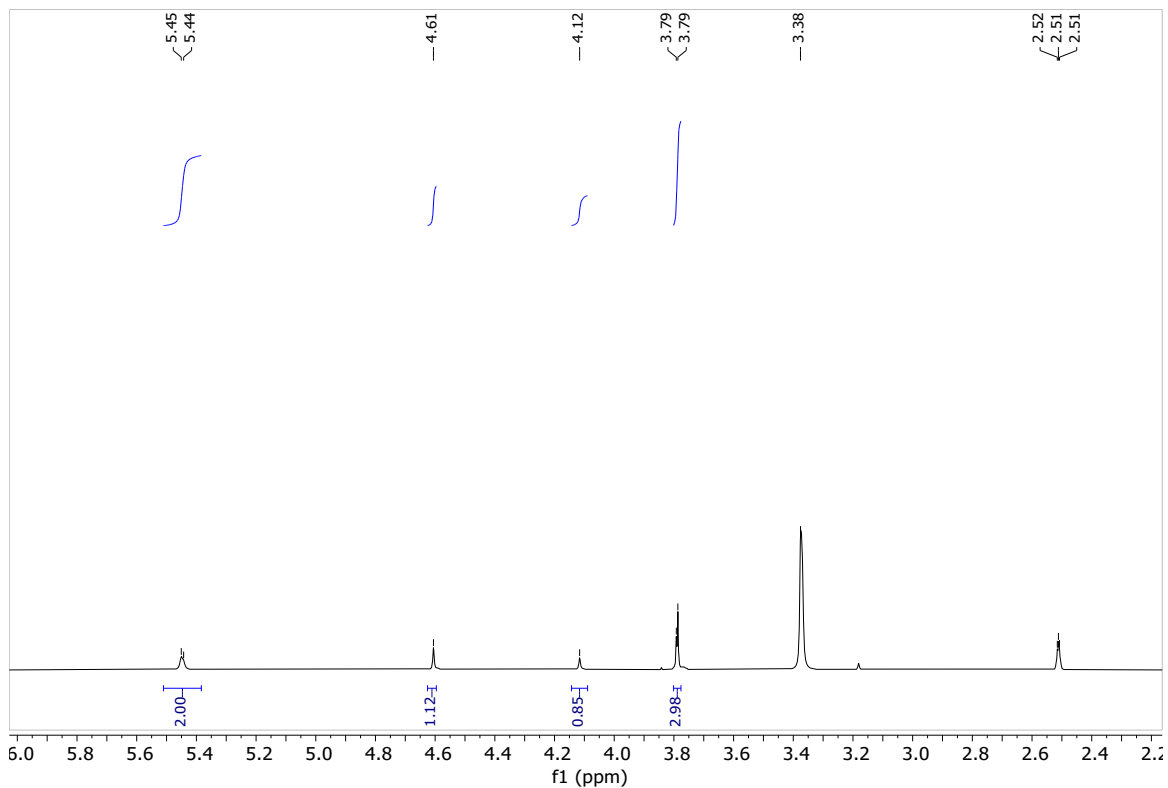




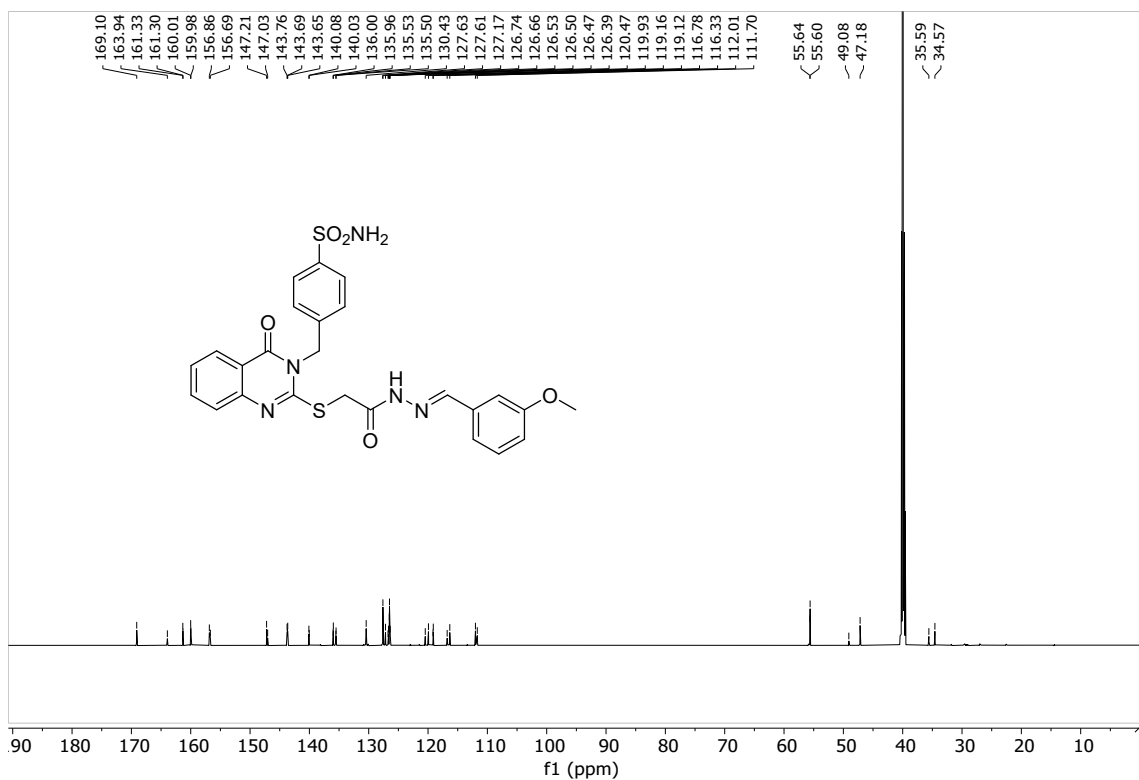
drshaban-AA-197.10.fid — PROTON DMSO D:\ abari 42



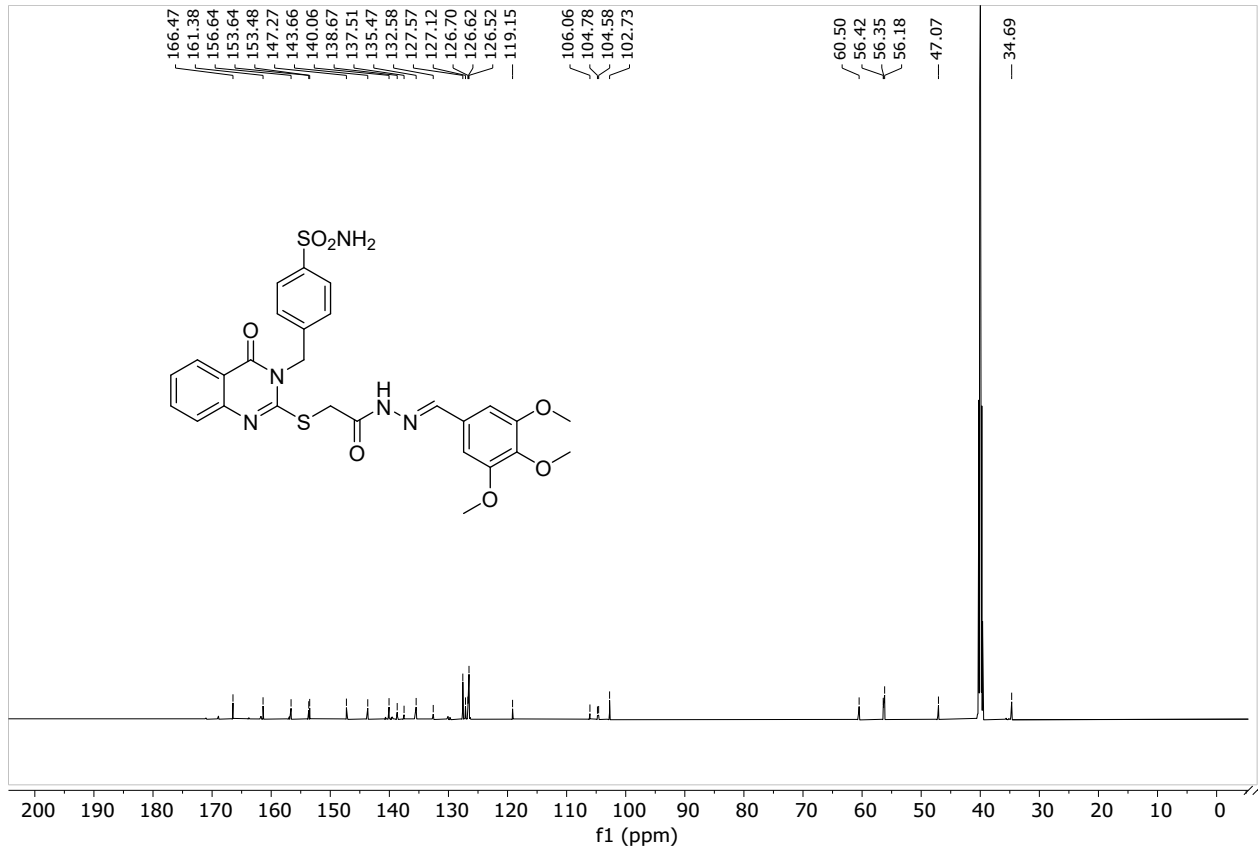
drshaban-AA-197.10.fid — PROTON DMSO D:\ abari 42



drshaban-AA-197.10.fid — PROTON DMSO D:\abari 42

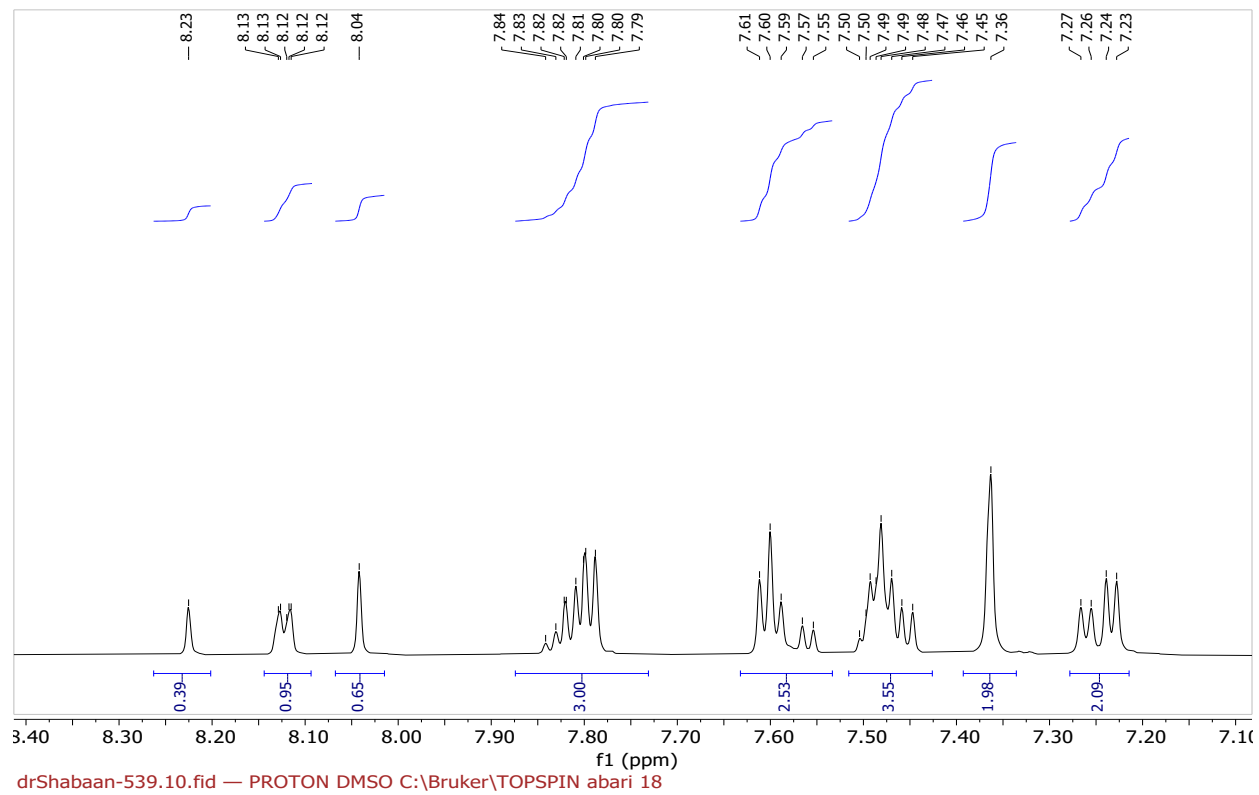
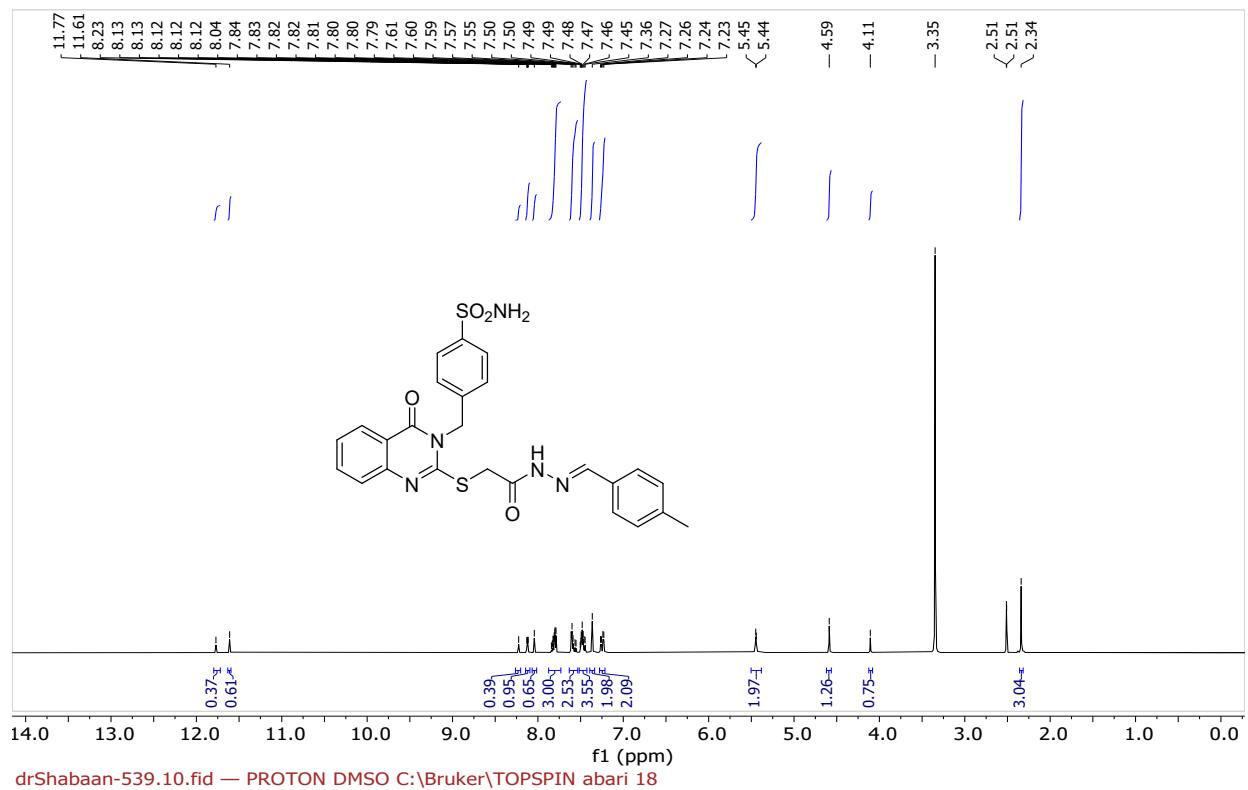


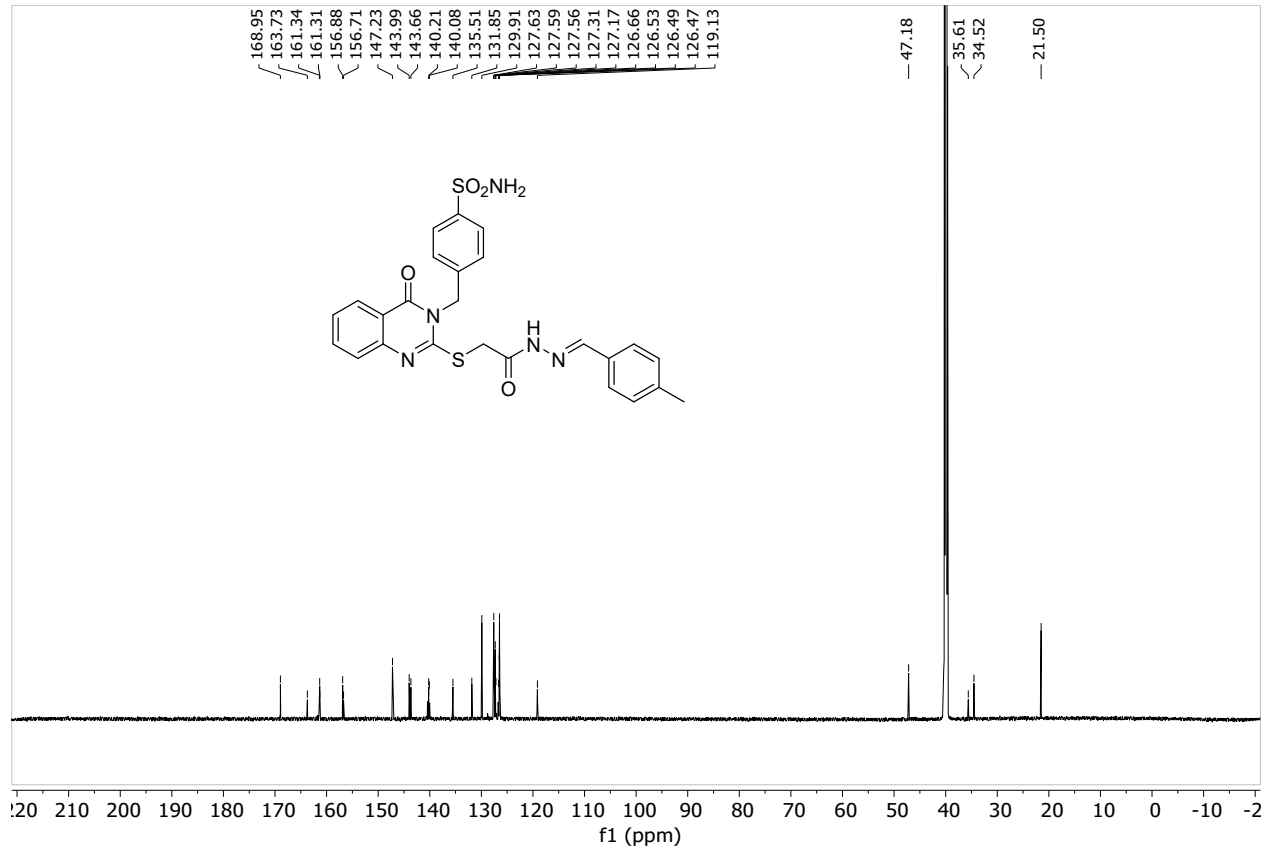
drShaban-AA-197.10.fid — C13CPD DMSO {C:\Bruker\TOPSPIN} abari 40



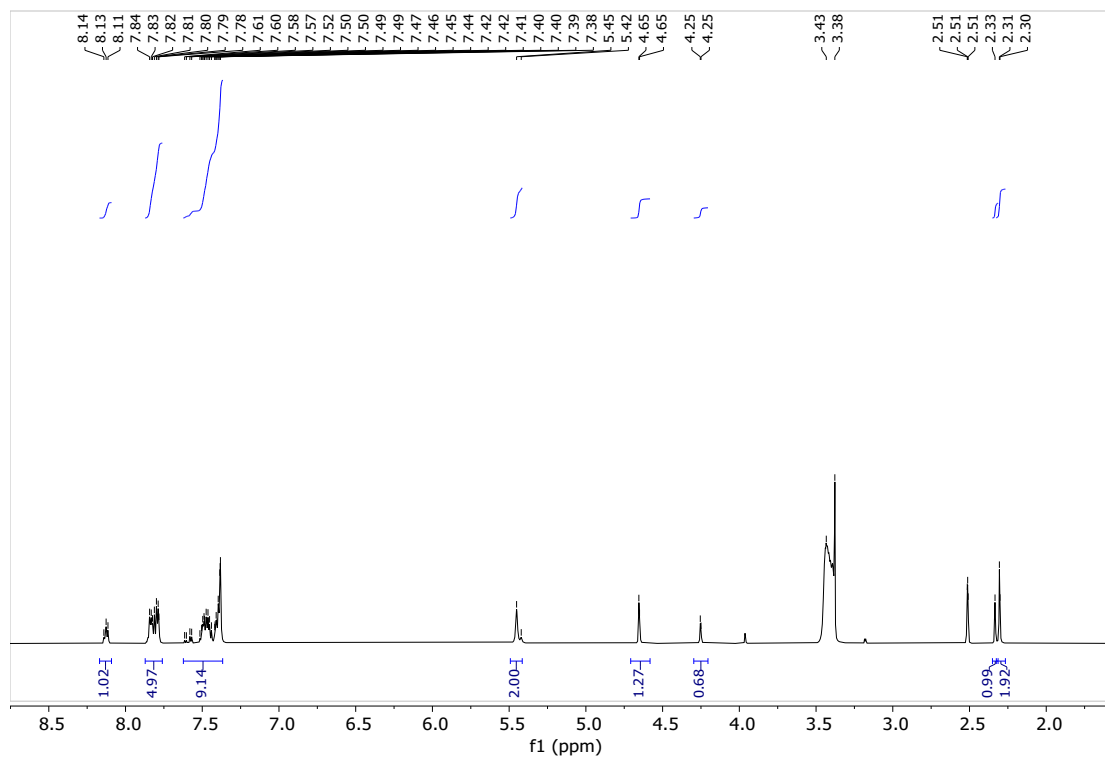
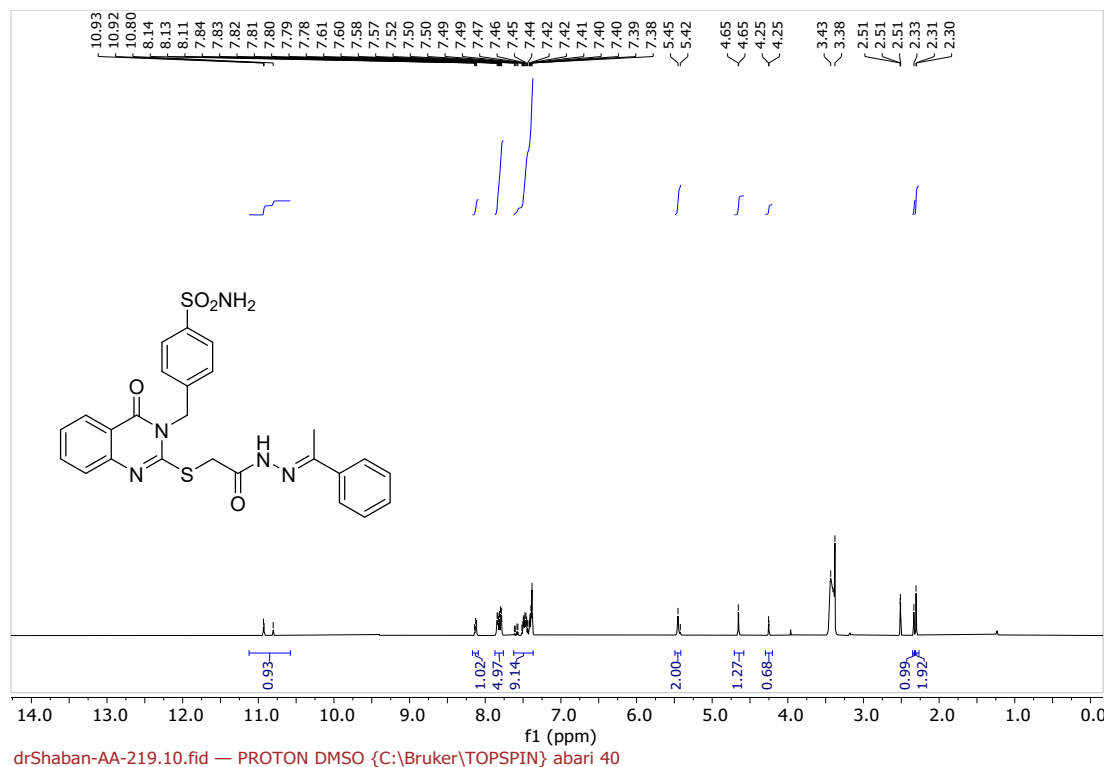
drShabaan-538.11.fid — C13CPD DMSO C:\Bruker\TOPSPIN abari 17

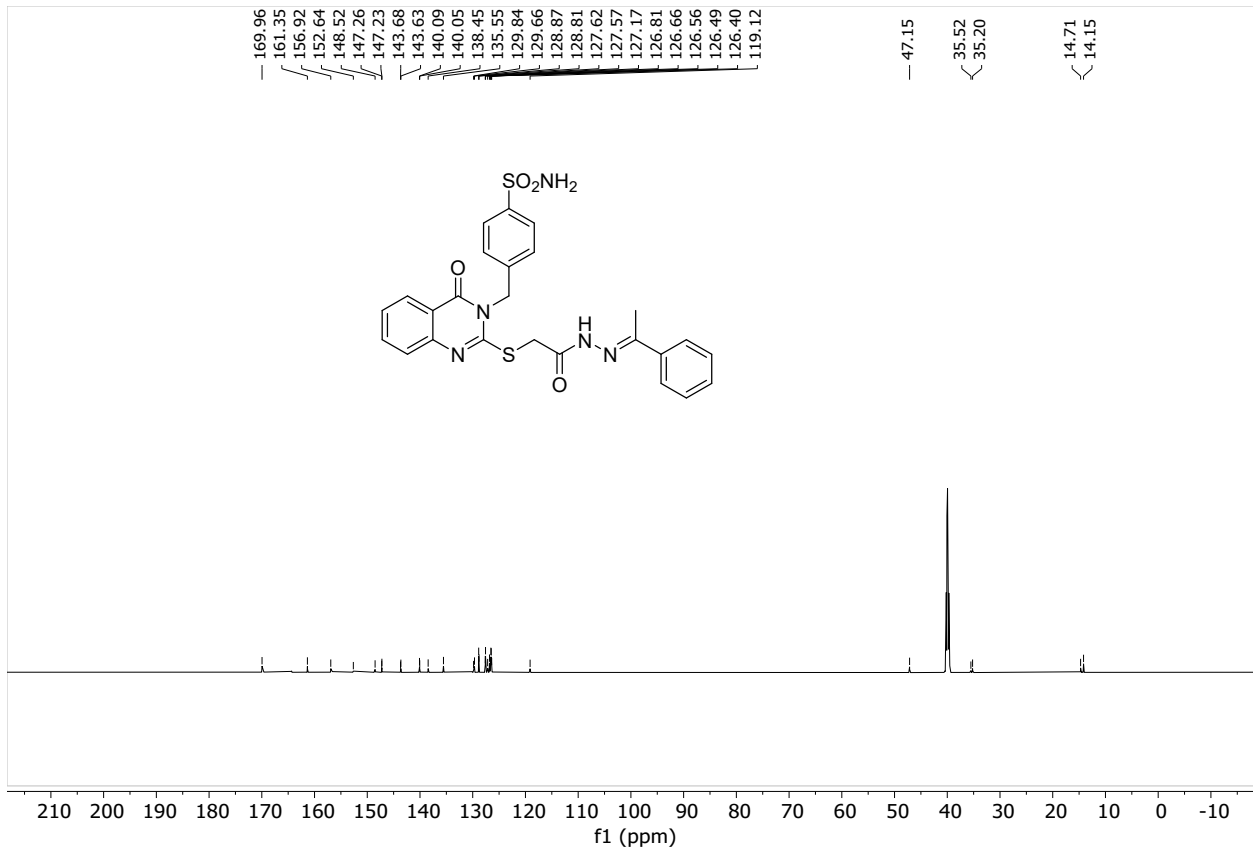




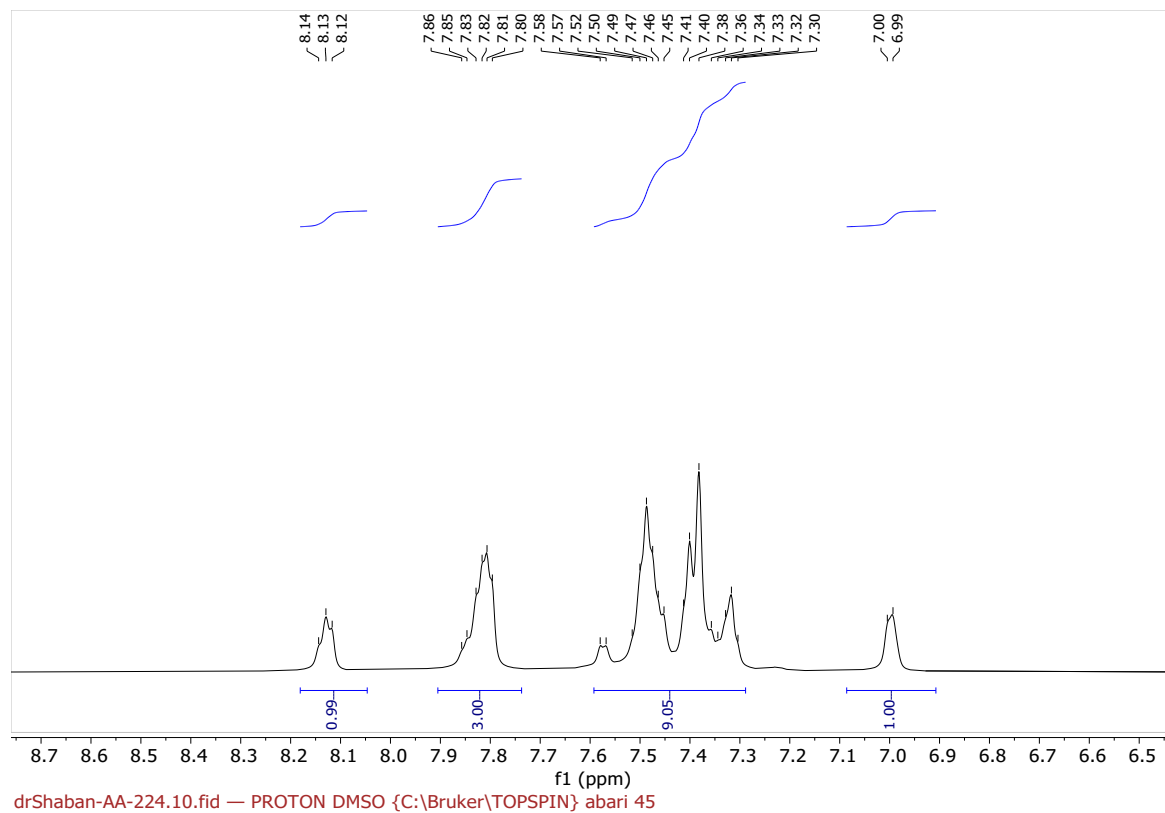
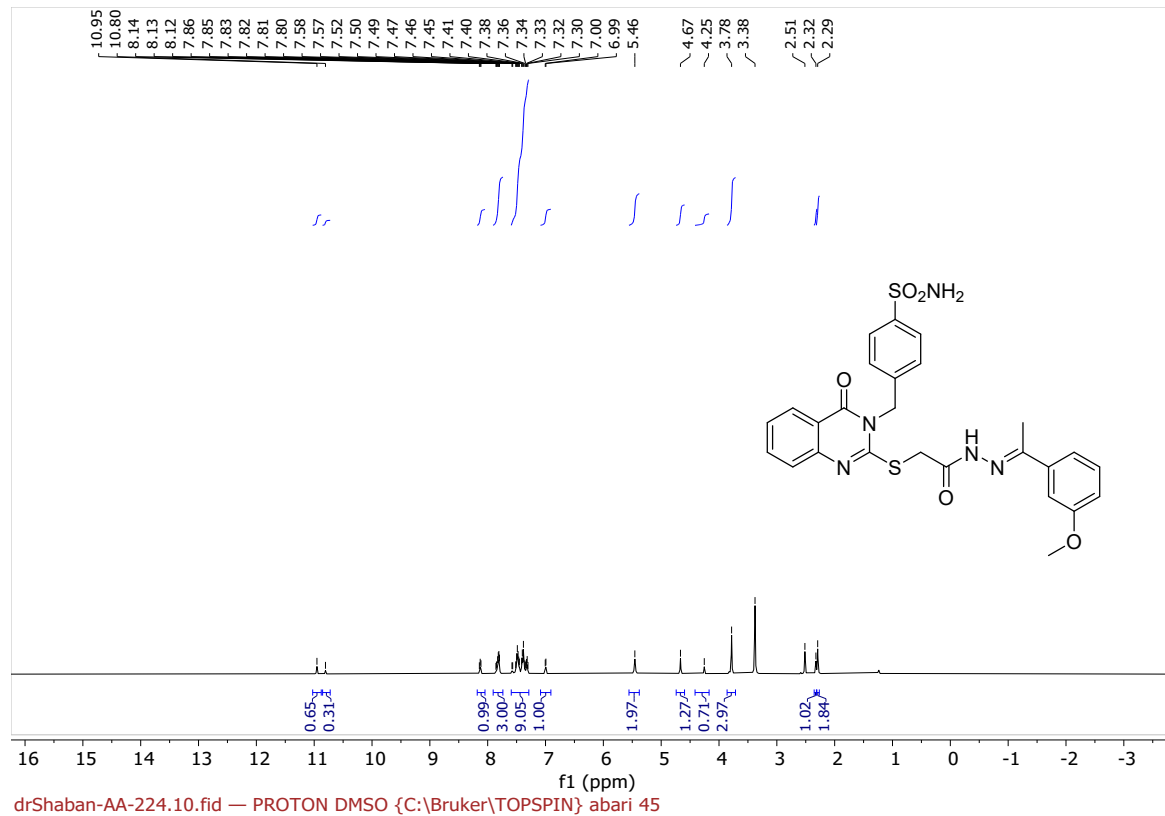


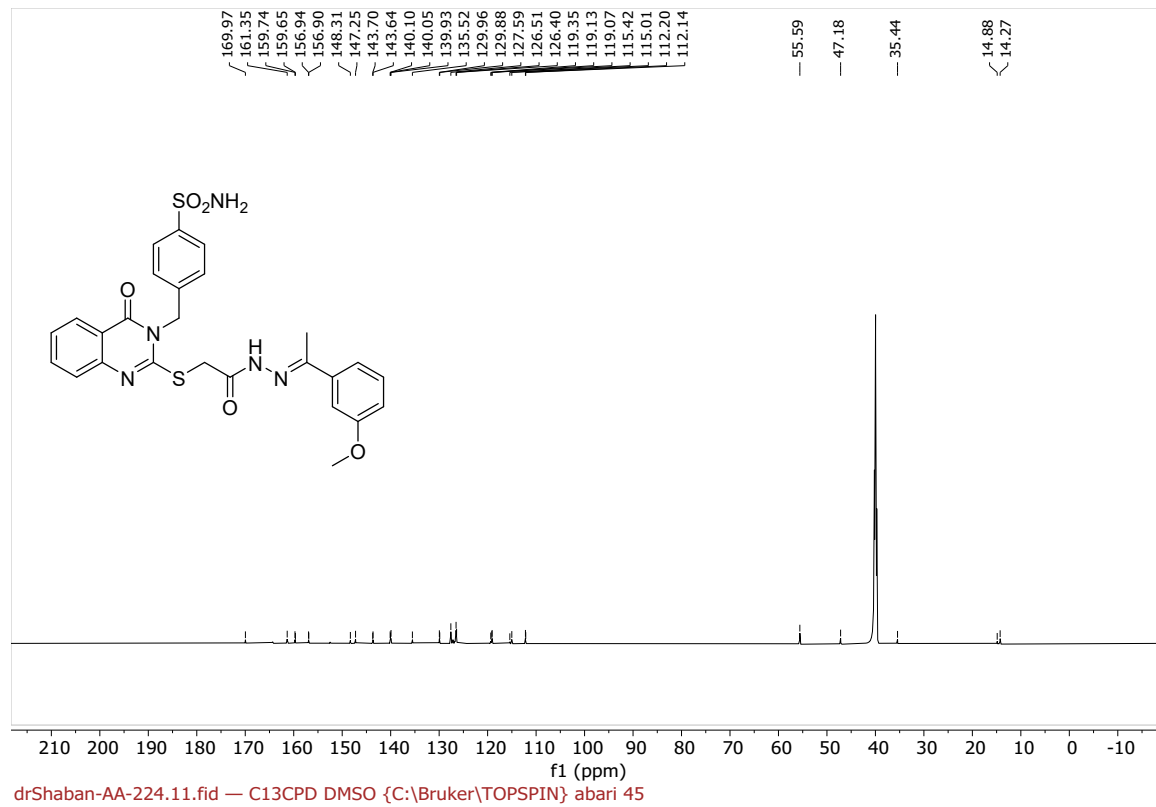
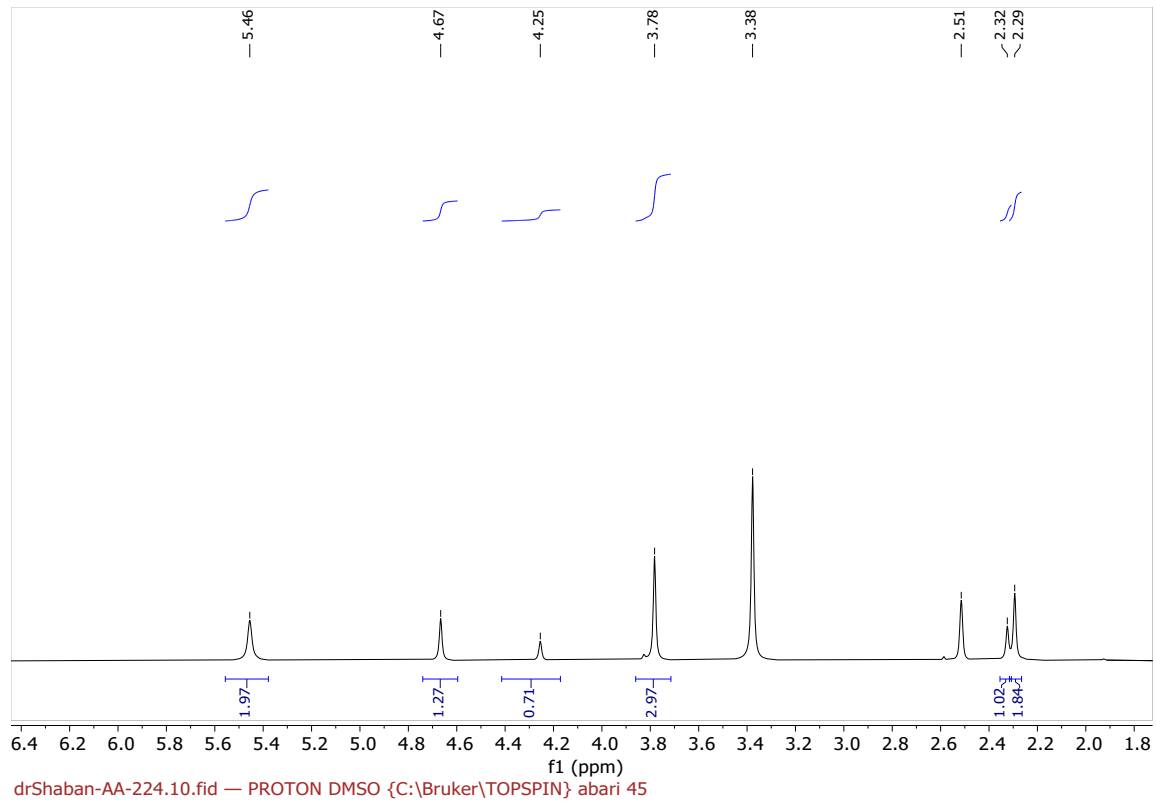
drShabaan-539.11.fid — C13CPD DMSO C:\Bruker\TOPSPIN abari 18

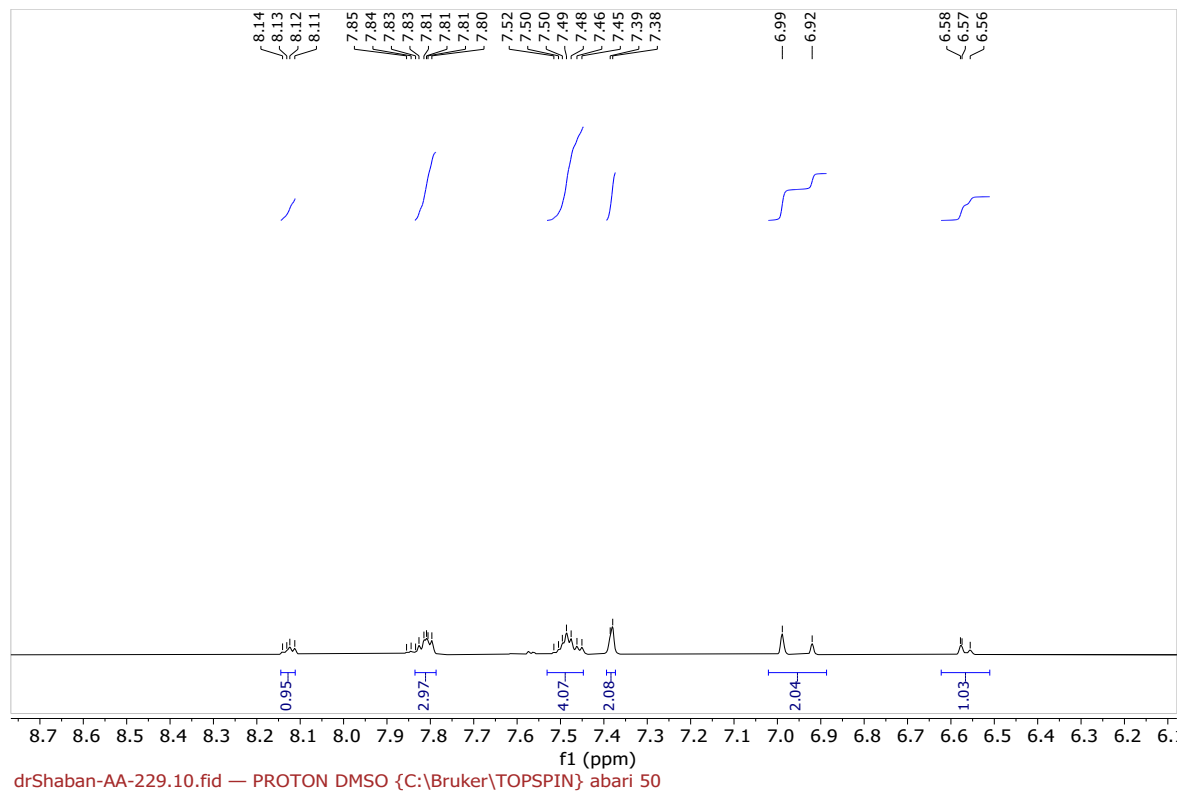
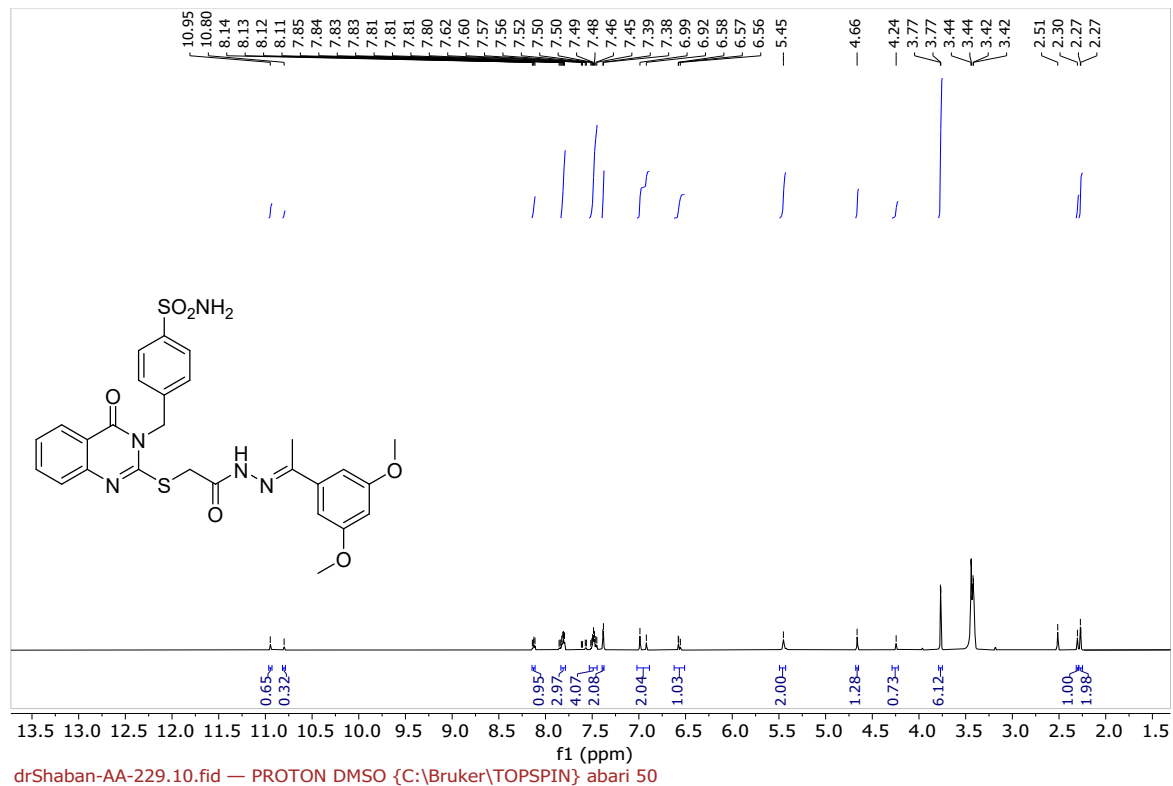


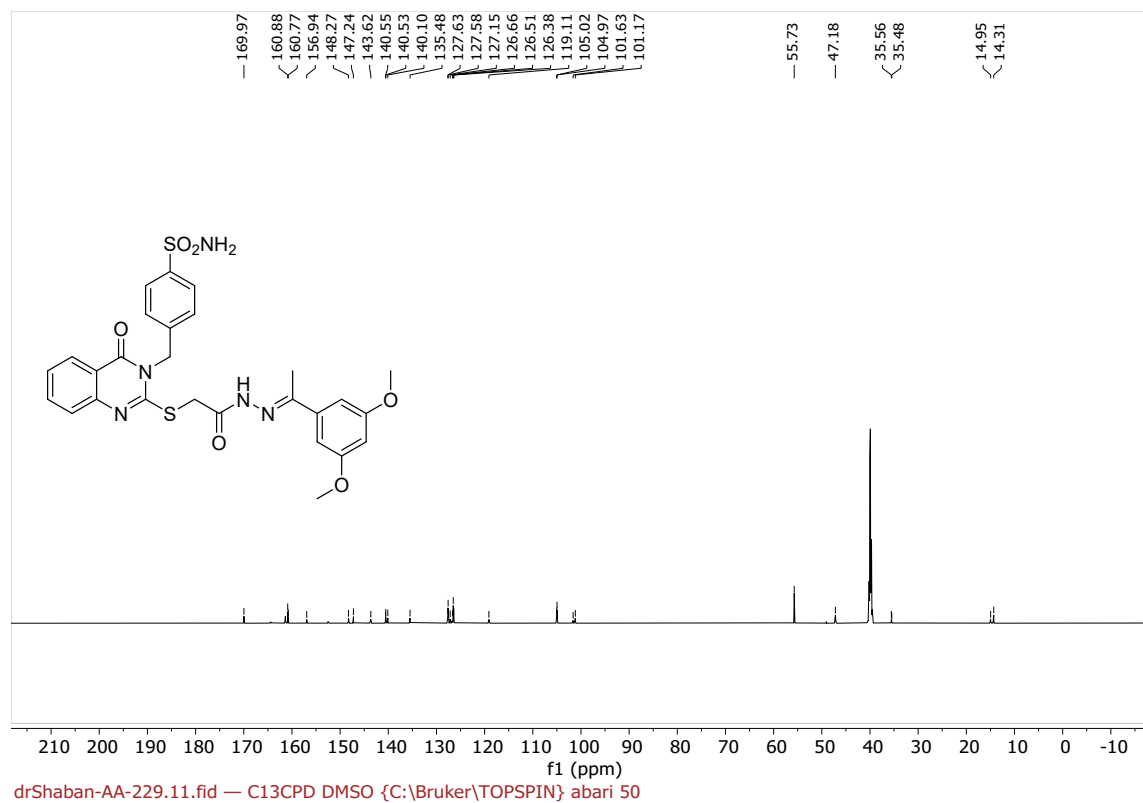
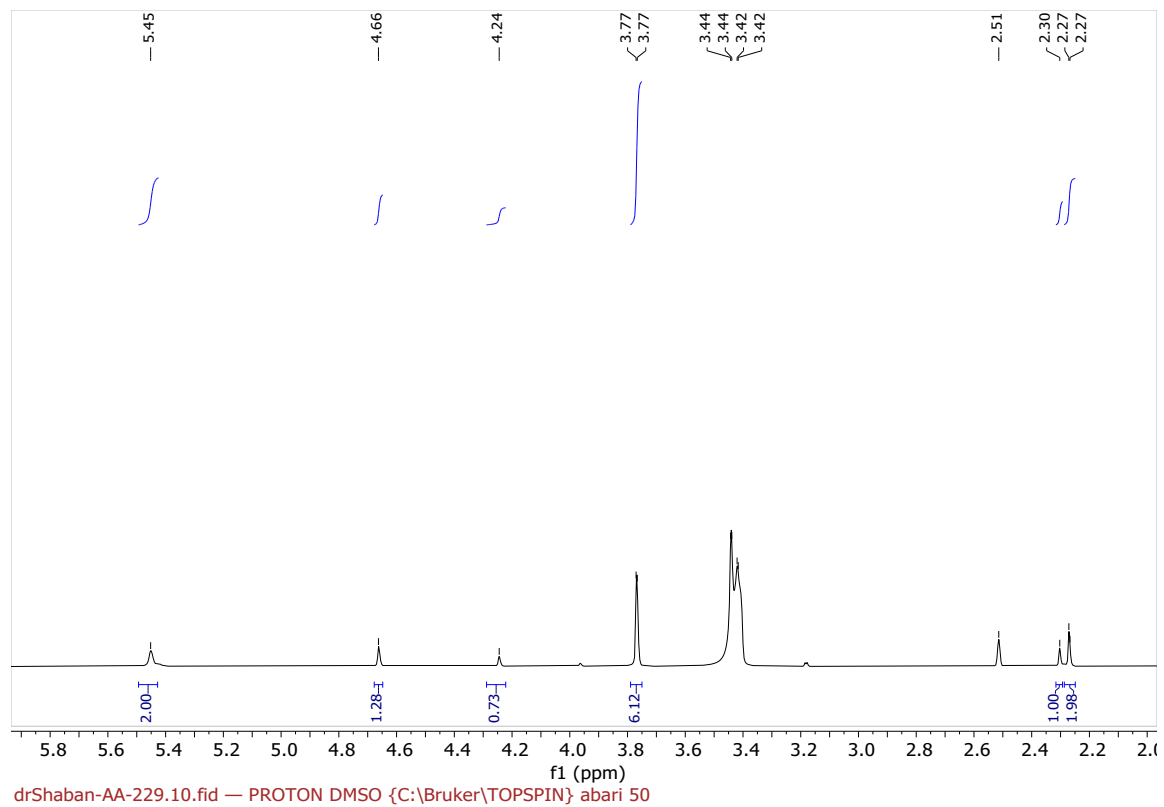


drShaban-AA-219.11.fid — C13CPD DMSO {C:\Bruker\TOPSPIN} abari 40

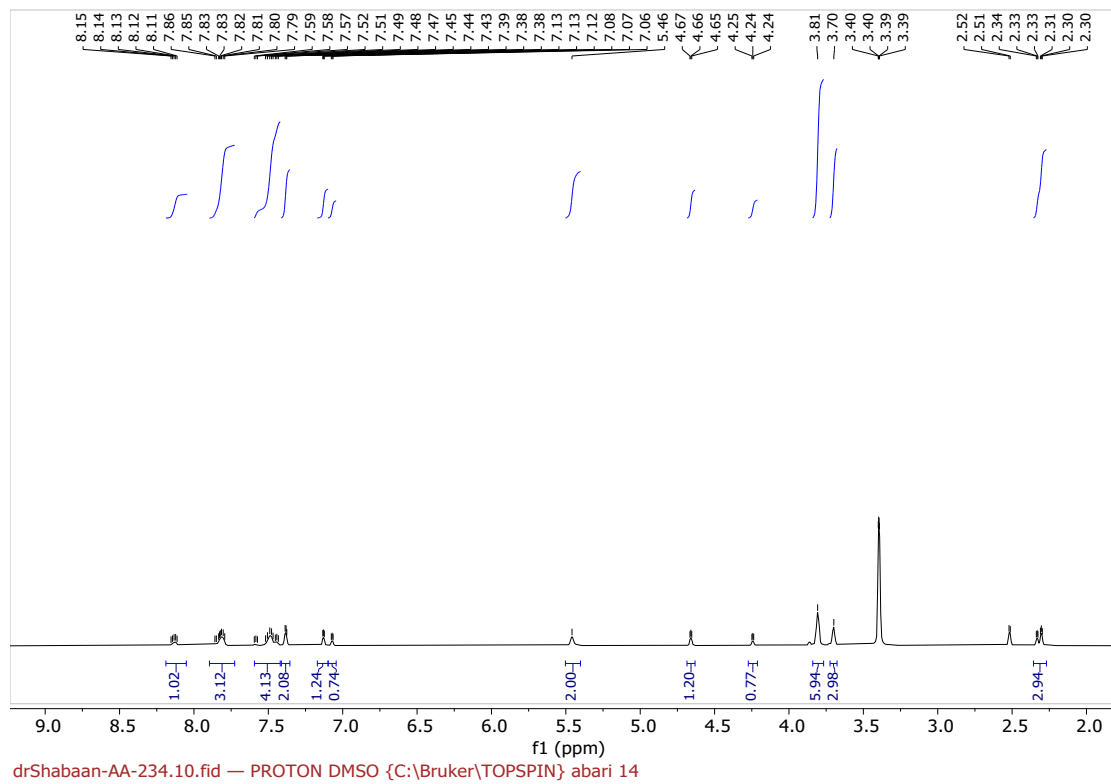
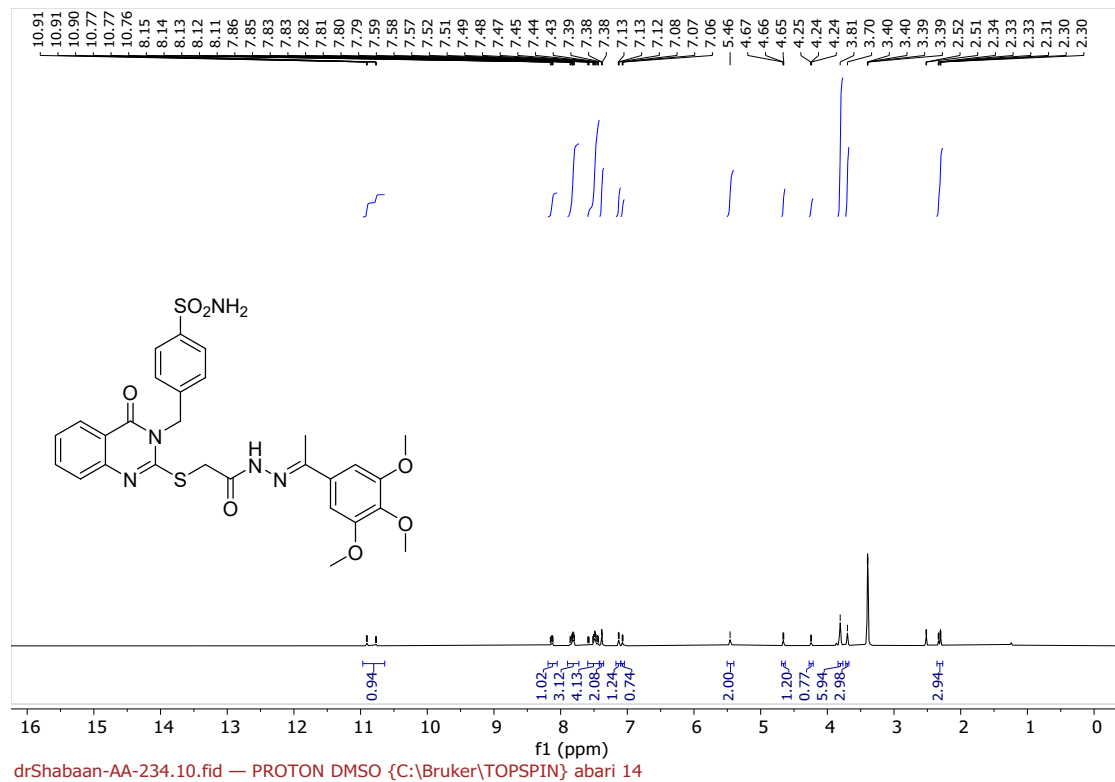


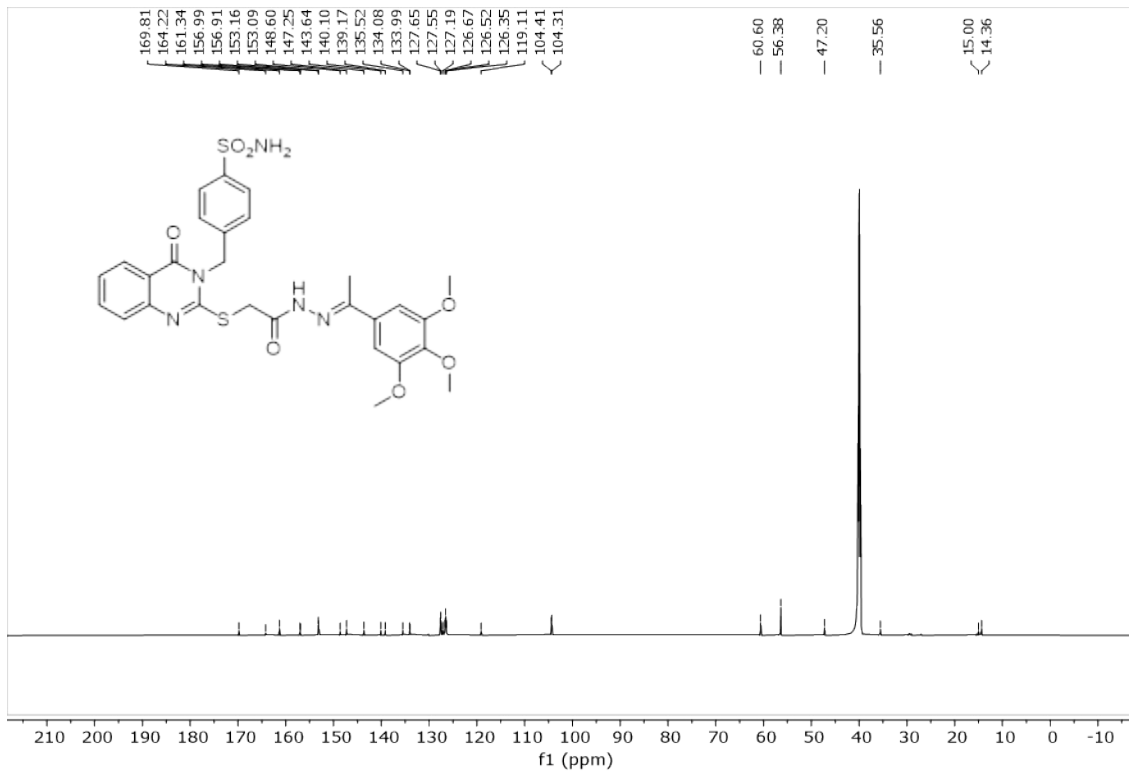




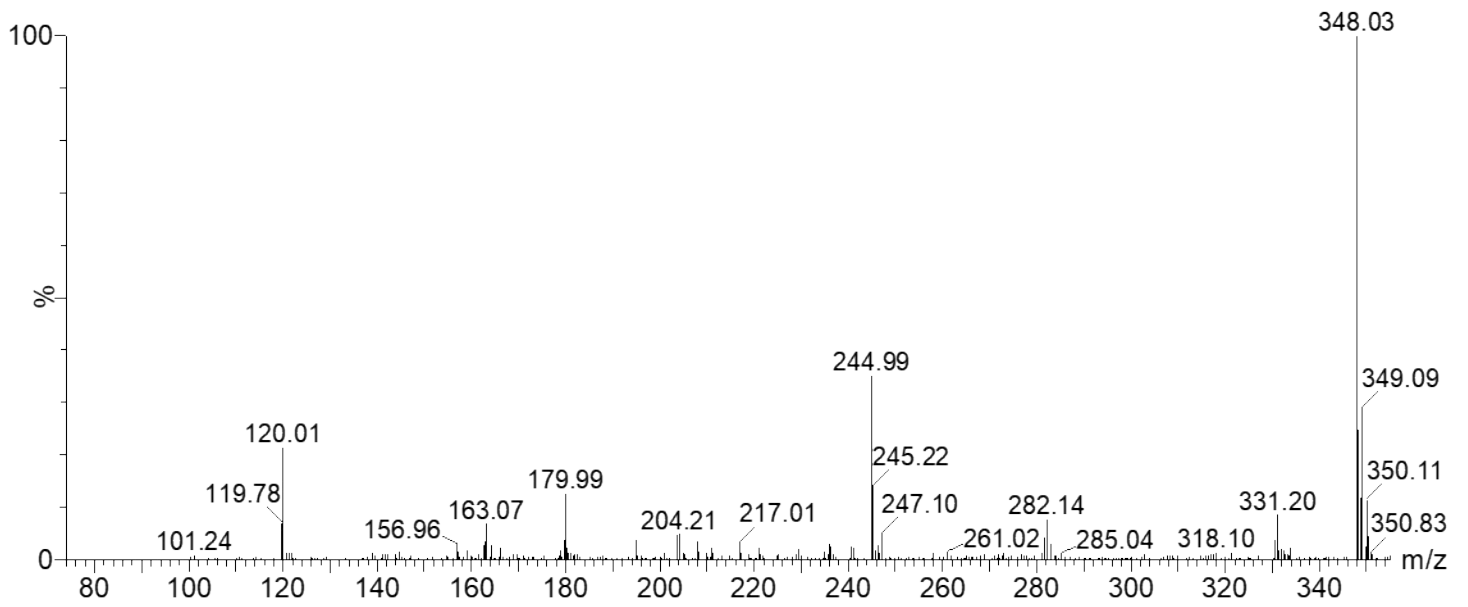




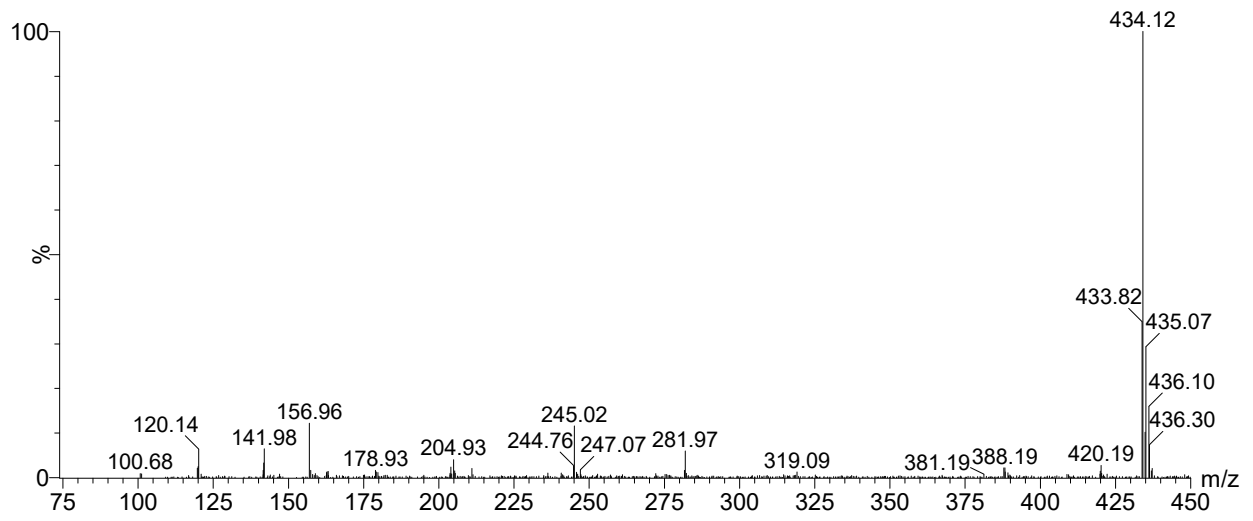




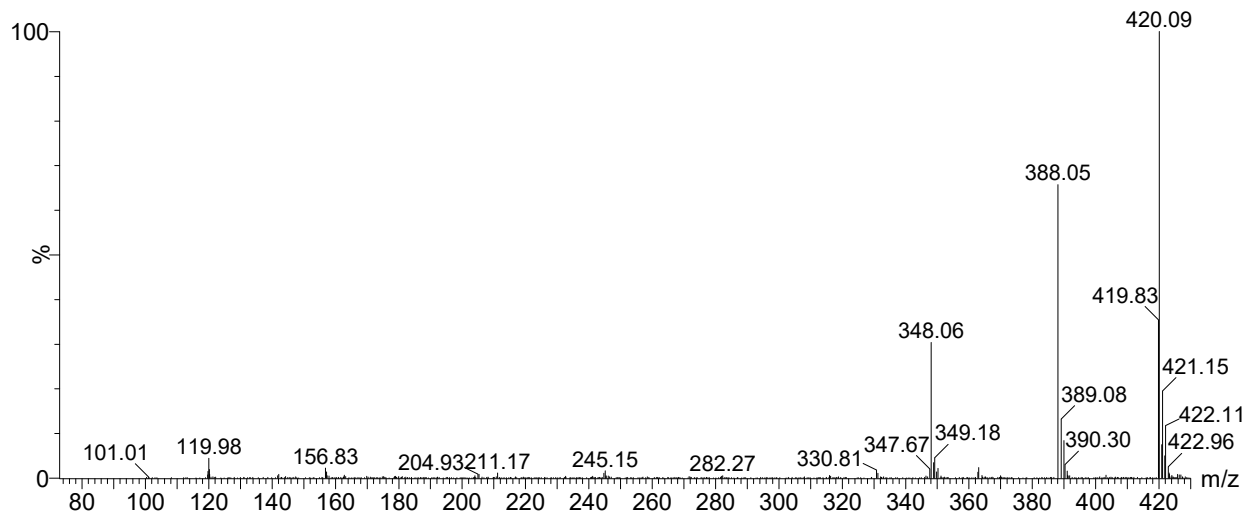
drShabaan-AA-234.11.fid — C13CPD DMSO {C:\Bruker\TOPSPIN} abari 14

**Sample MS positive scan 01**

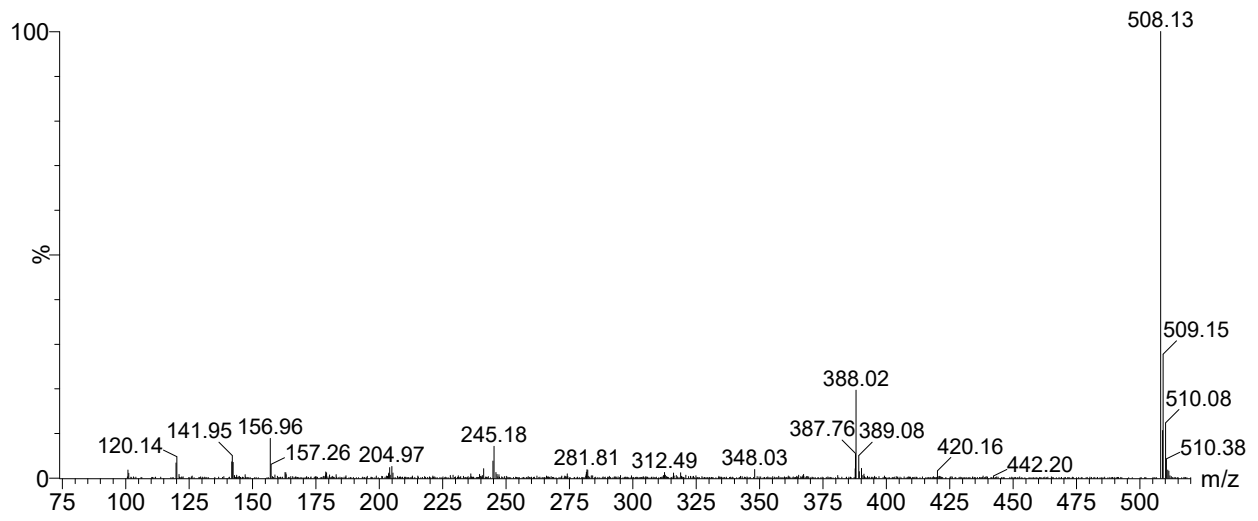
## Sample MS positive scan 02



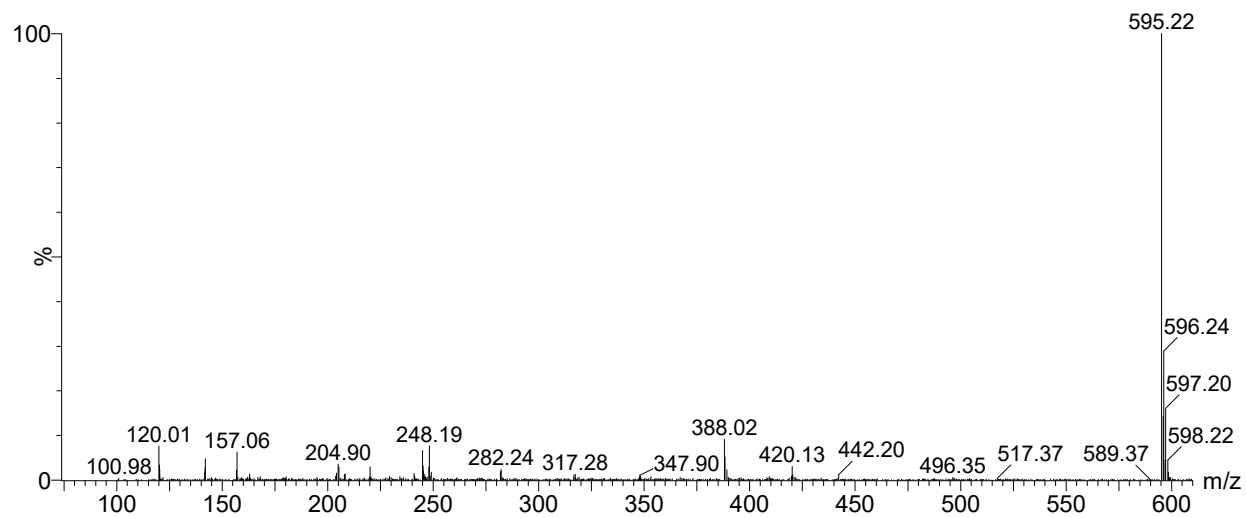
## Sample MS positive scan 03



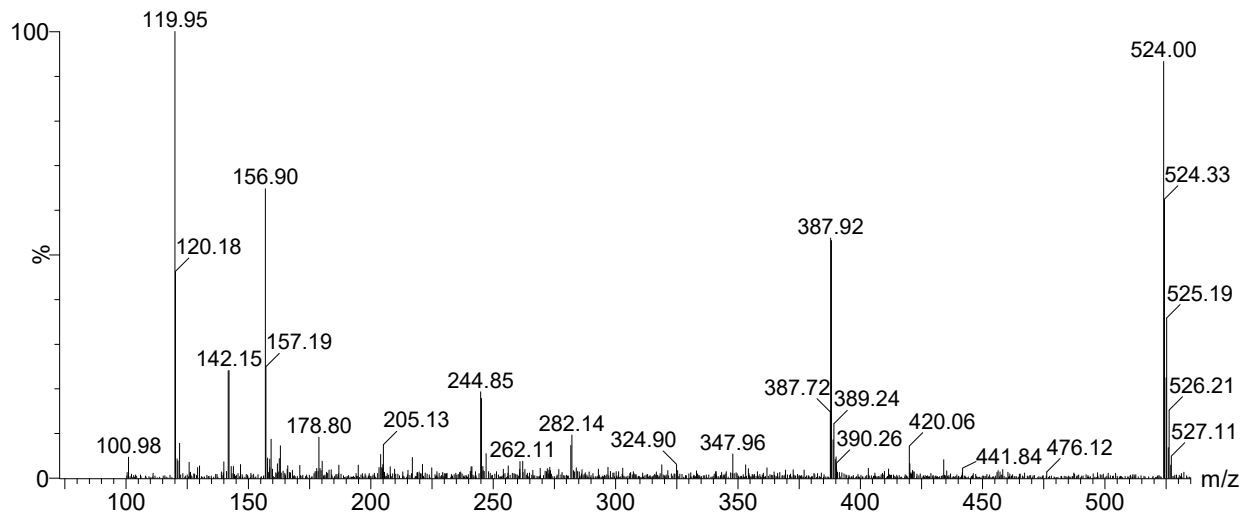
## Sample MS positive scan 04



## Sample MS positive scan 05

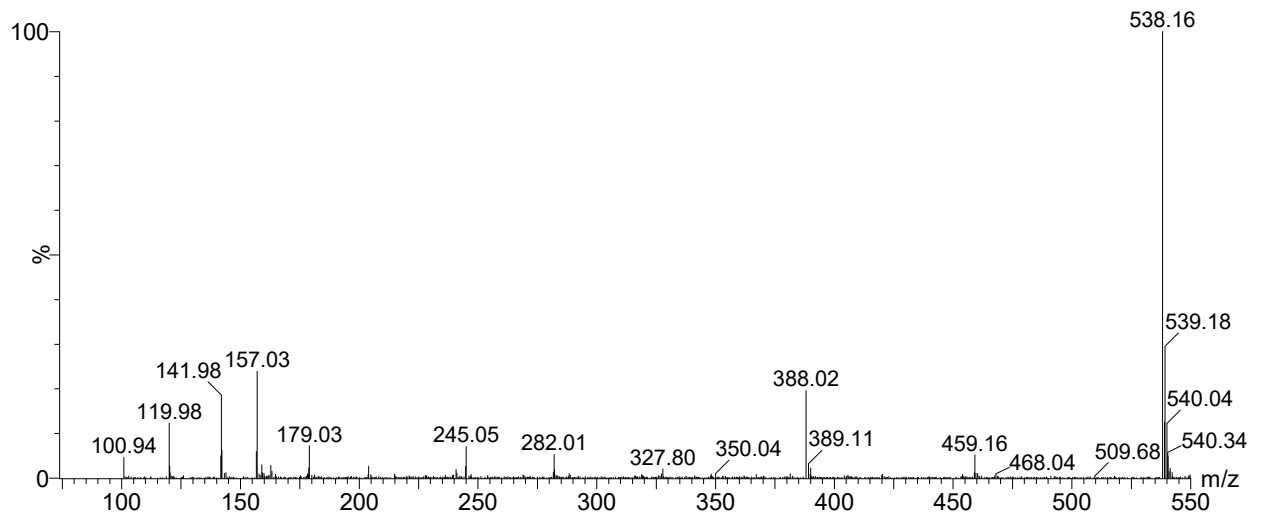


## Sample MS positive scan 06

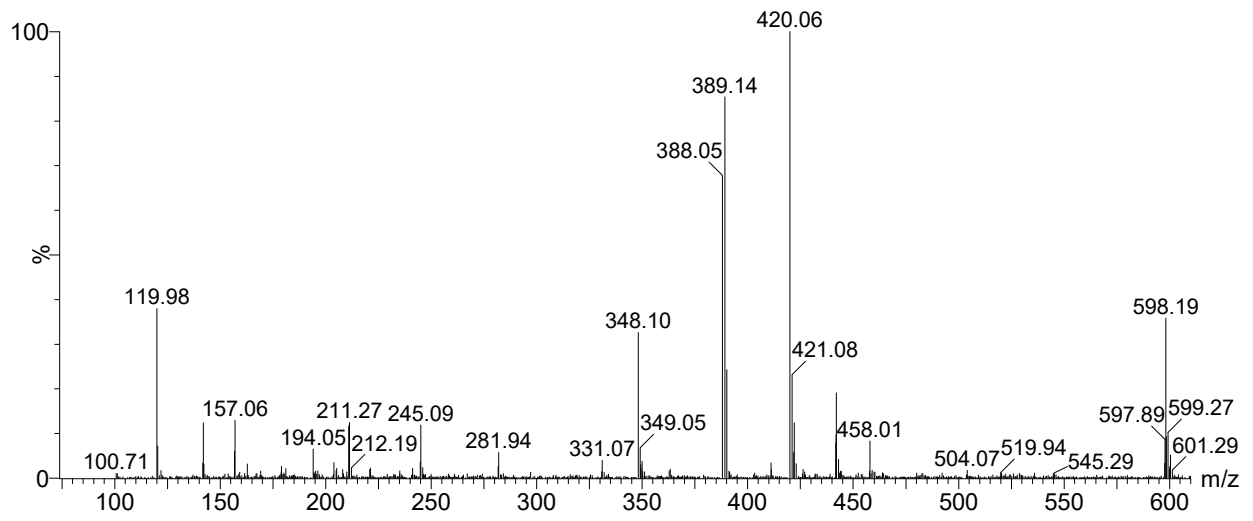




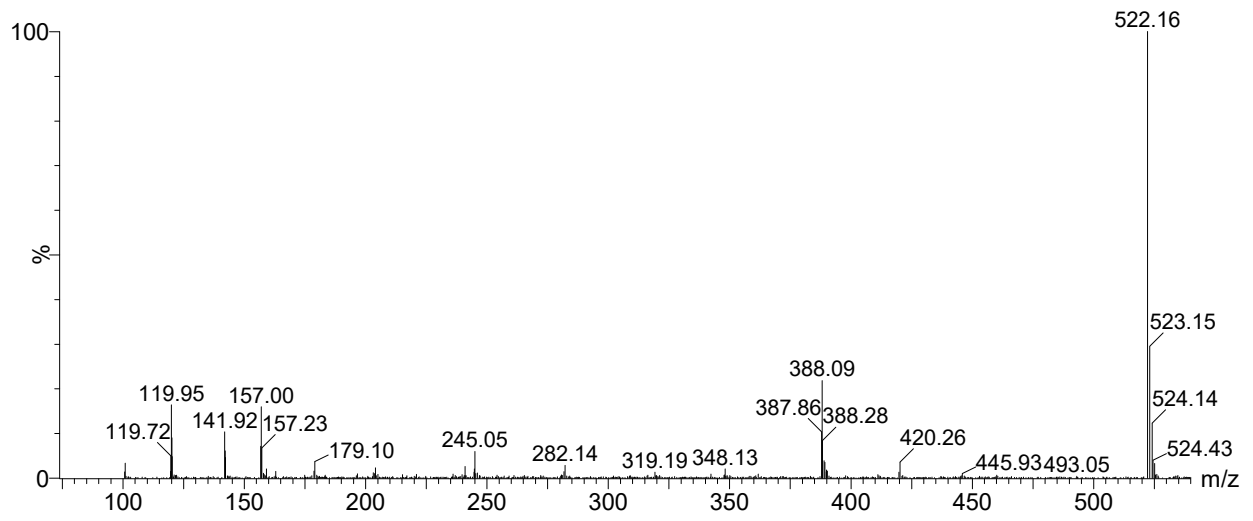
## Sample MS positive scan 07



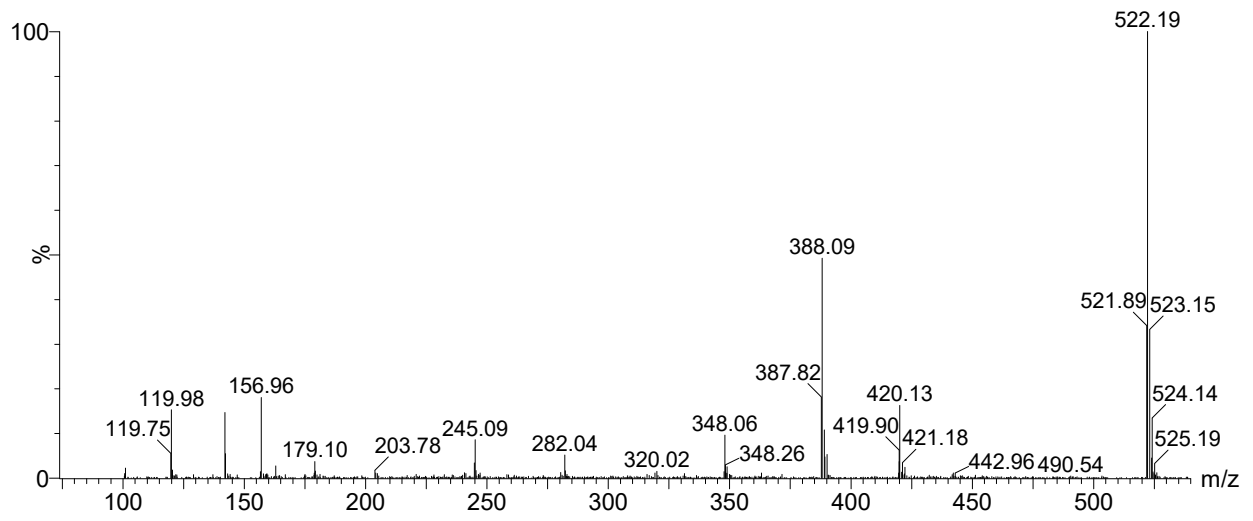
## Sample MS positive scan 08



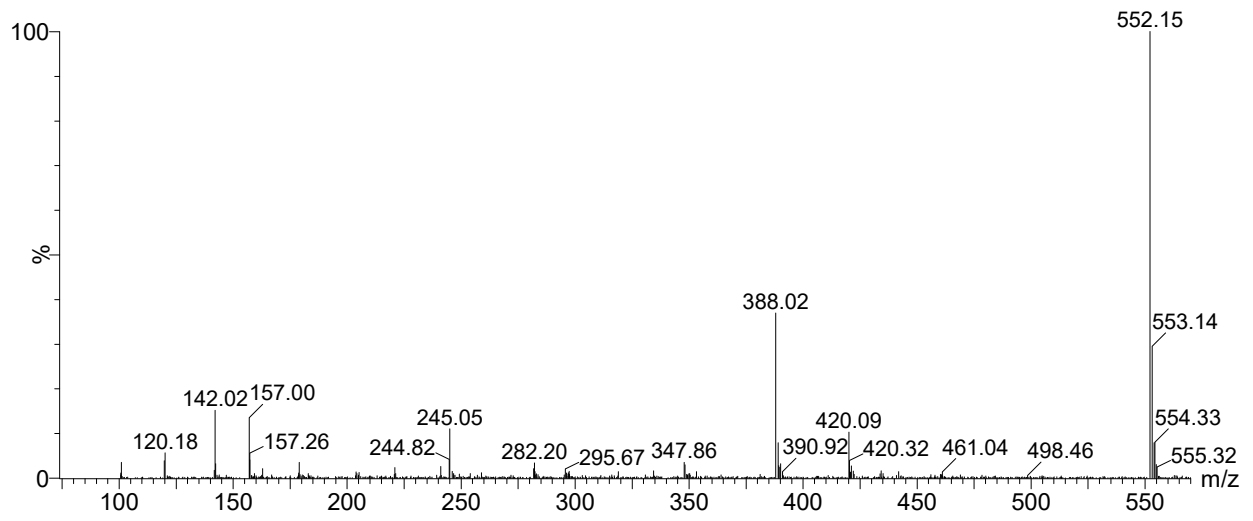
## Sample MS positive scan 09



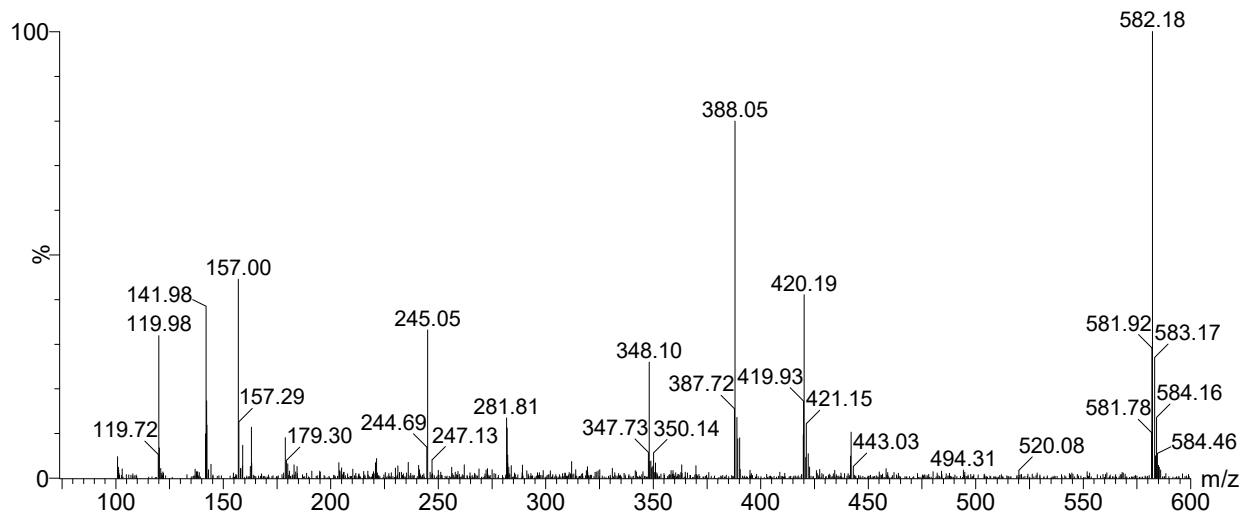
## Sample MS positive scan 10



## Sample MS positive scan 11



## Sample MS positive scan 12



## Sample MS positive scan 13

