

Fig. S1 sEV validation by ELISA

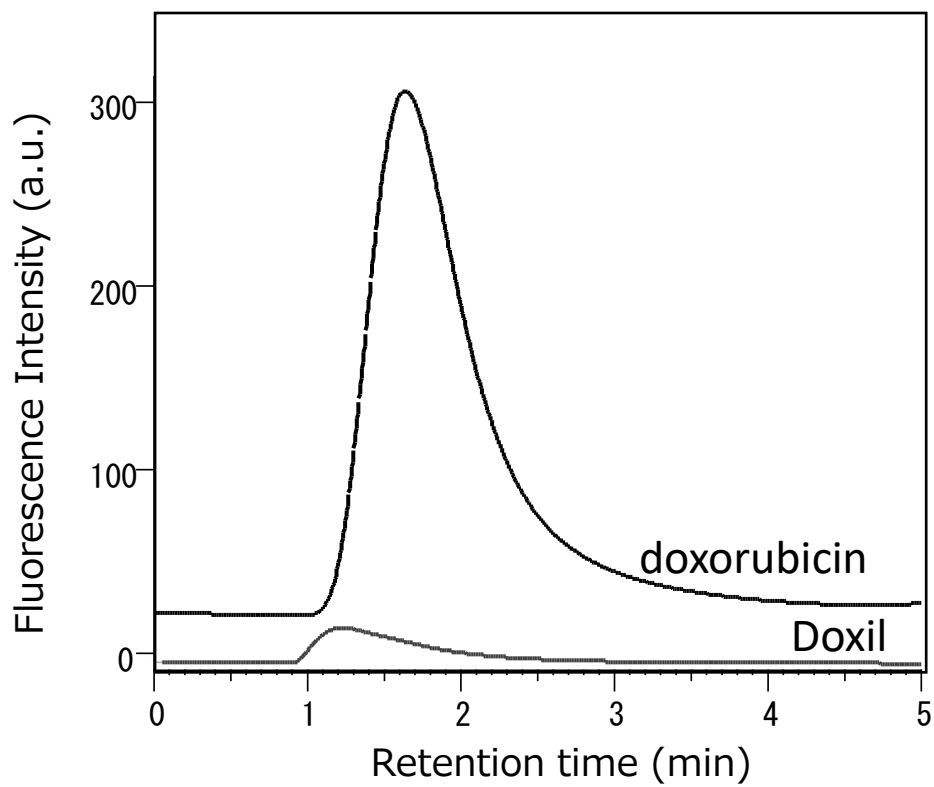


Fig. S2 Chromatograms of doxorubicin and Doxil at the same dose of doxorubicin

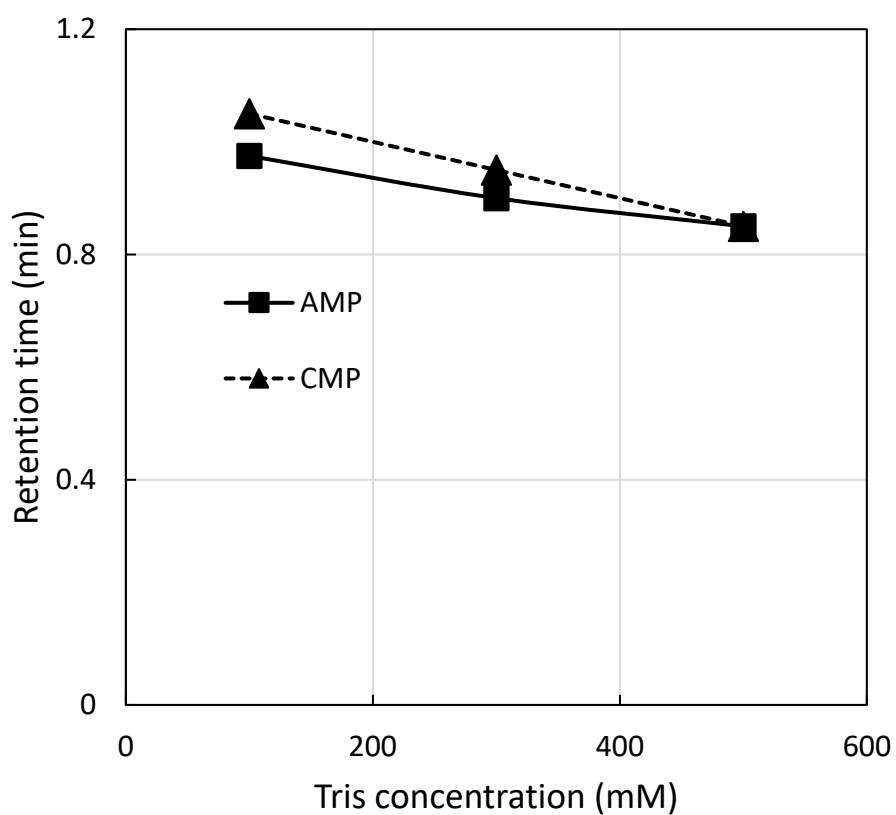


Fig. S3 Effect of Tris concentration on the retention times of adenosine 5'-monophosphate (AMP) and cytidine 5'-monophosphate (CMP).  
Mobile phase: Tris buffer (pH7)