

Supporting information for
**Ordered Patterns in Electroactive Polymer Ionic Liquid blends: Effect of
Long Range Interactions**

Ashima Choudhury¹, Pratyush Dayal^{1*}

¹Polymer Engineering Research Lab (PERL), Department of Chemical Engineering, Indian Institute of
Technology Gandhinagar, Gujarat-382055, India

*Email: pdayal@iitgn.ac.in

S1. Contour plots with electric field direction

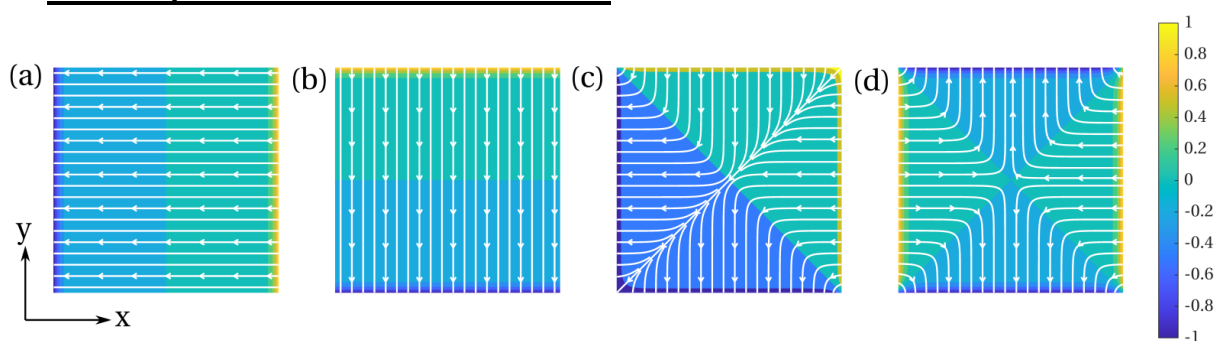


Figure 1: Contour plot with electric field applied in (a) x, (b) y, (c) both x & y direction with positive potential maintained at the top/right, and (d) left/right boundaries.

S2. Positive potential at left/right boundaries

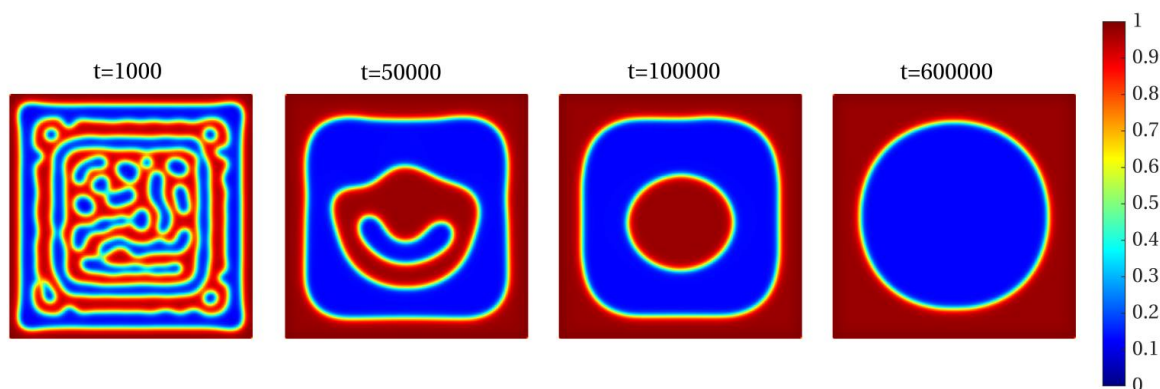


Figure 2: Time evolution of structure development in PIL blend in presence of electric field in both x and y direction with positive potential maintained at the left/right boundaries.