

Understanding the gelation properties of fluorophenyl glycosides of arabinoside gelators: Experimental and theoretical studies

*Sachchida N. Pandey, Navendu P. Pathak, Arunava Sengupta, * Somnath Yadav**

Department of Chemistry and Chemical Biology, Indian Institute of Technology (ISM)

Dhanbad, 826004, Jharkhand, India

Table of Contents

1. Synthesis of the fluorogelators 3a-e.....	S3-S5
2. Gelation studies of 3a-e in various solvents.....	S6-S7
3. WXR D Data.....	S8-S9
4. DFT results	S10-S44
5. NMR Spectra.....	S45-S54

1. Synthesis of the fluorogelators 3a-e

1.1 General Procedures

All chemicals, solvents and reagents were procured from commercial source and were used as received. Column chromatography was performed by using silica gel (230-400 mesh) under medium pressure. TLC was performed on precoated aluminium plates of silica gel 60-F₂₅₄. TLC spot were visualized by staining with vanillin solution and subsequent heating on a hot plate. ¹H and ¹³C NMR spectra are recorded on Bruker AC-400 NMR spectrometer at 400 MHz (¹H) and 100 MHz (¹³C) in solution of CDCl₃ or d₆-DMSO using the peaks of the residual non-deuterated solvent as internal standard. δ Values are reported in parts per million (ppm) and coupling constant (*J*) in Hertz. HRMS spectra are recorded on Waters Xevo G2-XS QT Mass Spectrometer and Optical rotation recorded by Anton Paar MCP 5100 Polarimeter.

1.2 General procedure for synthesis of fully de-protected phenolic glycosides

D-Arabinose (3.0 g, 19.9 mmol) was stirred in a solution of acetic anhydride (9.4 mL, 99.4 mmol) and pyridine (32.0 mL, 396.4 mmol) at room temperature for 12 hours. After completion of the reaction, 20 mL of H₂O was added to quench the reaction following which it was extracted with ethyl acetate (60 mL x 3) three times. The combined ethyl acetate extract was then washed with brine solution and dried over anhydrous sodium sulphate (Na₂SO₄) and evaporated it *in vacuo* to yield a syrupy residue of 1,2,3,4-tetra-*O*-acetyl-D-arabinopyranoside **2** (5.95 g, 94%) which was used further without purification.

Subsequently, the 1,2,3,4-tetra-*O*-acetyl-D-arabinopyranose **2** (5.95 g, 18.69 mmol) was dissolved in acetic acid (104 mL) followed by the dropwise addition of phosphorus tribromide (17.75 mL, 186.88 mmol) under nitrogen atmosphere. The solution was stirred at room temperature for 4 hours after which the reaction mixture was poured into ice/water (200 mL), and the aqueous phase was extracted thrice with dichloromethane (DCM, 80 mL each). The combined extract was then washed with brine and then dried over anhydrous Na₂SO₄. Concentration of the extract *in vacuo* to yield a colourless solid of 2,3,4- tri-*O*-acetyl-1-bromo- β -D-arabinopyranoside (5.42 g, 85%).

Subsequently, the 2,3,4-tri-*O*-acetyl-1-bromo- α -D-arabinopyranoside (5.42 g, 15.98 mmol) was dissolved in anhydrous DMF (30 mL) and fluoro-phenol derivatives (2.10 mL, 23.97 mmol, 1.5 equiv.) followed by Sodium hydride (0.95 g, 39.95 mmol, 2.5 equiv.) was added to the reaction mixture. The progress of the reaction was monitored by TLC. After 2 h, when the reaction was completed, the mixture was quenched with ethyl acetate. Then the reaction mixture was extracted thrice with ethyl acetate (40 mL x 3). The combined organic

extract was then dried over anhydrous Na₂SO₄, filtered, and concentrated *in vacuo* to yield the crude product. The crude product was purified by column chromatography (20% EA/PE) to afford 2,3,4-tri-*O*-acetyl-1-fluoro-phenoxy-β-D-arabinopyranoside (3.03 g, 54%, over two steps from **2**).

Further, the 2,3,4-tri-*O*-acetyl-1-fluoro-phenoxy-β-D-arabinopyranoside (3.03 g, 8.60 mmol) was dissolved in methanol (20 mL) followed by Sodium methoxide (NaOMe, 0.139 g, 2.57 mmol, 0.3 equiv.) was added to the reaction mixture. The progress of the reaction was monitored by TLC. After 1 h, when the reaction was completed, the mixture was neutralized with amberlite IR 120 H⁺ resin. Then the reaction mixture was filtered and concentrated *in vacuo* to yield the crude product. The crude product was purified by column chromatography (5-10% MeOH/CHCl₃) to afford white solid fluoro-phenoxy-β-D-arabinopyranoside **3**.

1.3. Characterization data for compounds

1.3.1. 1-(2-fluorophenoxy)-β-D-arabinopyranosides (3a): It was synthesized following the general procedure and elution of the column with 9% methanol (MeOH) in Chloroform (CHCl₃) to afford **3a** (0.252 g, 66%) from compound **2** (over three steps) as a white solid. m.p. 127–129 °C [α]_D²⁵ = -9.747 (*c* = 0.266 in MeOH); ¹H NMR (400 MHz, d₆-DMSO): δ (ppm) 7.25–7.19 (m, 2H), 7.13–7.09 (m, 1H), 7.03–6.98 (m, 1H), 5.31 (d, *J* = 5.3 Hz, 1H), 4.93 (d, *J* = 6.7 Hz, 1H), 4.89 (d, *J* = 5.6 Hz, 1H), 4.72 (d, *J* = 4.2 Hz, 1H), 3.75–3.69 (m, 2H), 3.67–3.62 (m, 1H), 3.59–3.56 (m, 1H), 3.49–3.45 (m, 1H). ¹³C{¹H} NMR (100 MHz, d₆-DMSO): δ (ppm) 153.5, 151.1, 144.7 (d, *J* = 10.4 Hz), 124.8 (d, *J* = 3.6 Hz), 122.6 (d, *J* = 6.9 Hz), 118.0, 116.3 (d, *J* = 18.2 Hz), 101.2, 72.5, 70.3, 67.4, 65.6. HRMS calcd. for C₁₁H₁₃FO₅Na⁺ (M + Na)⁺ 267.0639; found 267.0637.

1.3.2. 1-(3-fluorophenoxy)-β-D-arabinopyranosides (3b): It was synthesized following the general procedure and elution of the column with 9% methanol (MeOH) in Chloroform (CHCl₃) to afford **3b** (0.231 g; 60%) from compound **2** (over three steps) as a white solid. m.p. 139–141 °C [α]_D²⁵ = -1.80 (*c* = 0.166 in MeOH); ¹H NMR (400 MHz, d₆-DMSO): δ (ppm) 7.35–7.29 (m, 1H), 6.87–6.79 (m, 3H), 5.27 (d, *J* = 5.1 Hz, 1H), 4.90 (d, *J* = 5.3 Hz, 1H), 4.88 (d, *J* = 6.8 Hz, 1H), 4.70 (d, *J* = 4 Hz, 1H), 3.74–3.68 (m, 2H), 3.64–3.56 (m, 2H), 3.47–3.43 (m, 1H). ¹³C{¹H} NMR (100 MHz, d₆-DMSO): δ (ppm) 164.0, 161.6, 158.6 (d, *J* = 11.0 Hz), 130.7 (d, *J* = 10.1 Hz), 112.5 (d, *J* = 2.5 Hz), 108.5, 108.3, 103.8, 103.6, 100.6, 72.5, 70.2, 67.6, 65.9. HRMS calcd. for C₁₁H₁₃FO₅Na⁺ (M + Na)⁺ 267.0639; found 267.0634.

1.3.3. 1-(4-fluorophenoxy)- β -D-arabinopyranosides (3c): It was synthesized following the general procedure and elution of the column with 9% methanol (MeOH) in Chloroform (CHCl₃) to afford **3c** (0.283 g; 74%) from compound **2** (over three steps) as a white solid. m.p. 152–154 °C [α]_D²⁵ = –50.555 (*c* = 0.233 in MeOH); ¹H NMR (400 MHz, d₆-DMSO): δ (ppm) 7.15–7.09 (m, 2H), 7.04–6.99 (m, 2H), 5.25 (d, *J* = 5 Hz, 1H), 4.88 (d, *J* = 5.6 Hz, 1H), 4.77 (d, *J* = 6.9 Hz, 1H), 4.68 (d, *J* = 4.1 Hz, 1H), 3.74–3.68 (m, 2H), 3.60–3.55 (m, 2H), 3.46–3.42 (m, 1H). ¹³C{¹H} NMR (100 MHz, d₆-DMSO): δ (ppm) 158.4, 156.1, 153.6 (d, *J* = 1.9 Hz), 118.0 (d, *J* = 8.1 Hz), 116.0, 115.73, 101.48, 72.52, 70.34, 67.67, 65.79. HRMS calcd. for C₁₁H₁₃FO₅H⁺ (M + H)⁺ 245.0820; found 245.0848.

61.3.4. 1-(2,3-difluorophenoxy)- β -D-arabinopyranosides (3d): It was synthesized following the general procedure and elution of the column with 9% methanol (MeOH) in Chloroform (CHCl₃) to afford **3d** (0.280 g; 71%) from compound **2** (over three steps) as a white solid. m.p. 140–142 °C [α]_D²⁵ = +6.666 (*c* = 0.333 in MeOH); ¹H NMR (400 MHz, d₆-DMSO): δ (ppm) 7.14–7.01 (m, 3H), 5.36 (d, *J* = 5.2 Hz, 1H), 4.96 (d, *J* = 6.4 Hz, 1H), 4.88 (d, *J* = 5.6 Hz, 1H), 4.73 (d, *J* = 4.0 Hz, 1H), 3.75–3.71 (m, 2H), 3.67–3.58 (m, 3H). ¹³C{¹H} NMR (100 MHz, d₆-DMSO): δ (ppm) 151.9 (d, *J* = 10.2 Hz), 149.5 (d, *J* = 10.5 Hz), 146.4 (dd, *J*₁ = 7.5 Hz, *J*₂ = 2.5 Hz), 142.2 (d, *J* = 14.1 Hz), 139.7 (d, *J* = 14.4 Hz), 124.2 (dd, *J*₁ = 8.6 Hz, *J*₂ = 5.0 Hz), 113.4 (d, *J* = 2.6 Hz), 110.3 (d, *J* = 17.0 Hz), 101.4, 72.5, 70.3, 67.4, 65.7. HRMS calcd. for C₁₁H₁₂F₂O₅Na⁺ (M + Na)⁺ 285.0545; found 285.0543.

1.3.5. 1-(3,4-difluorophenoxy)- β -D-arabinopyranosides (3e): It was synthesized following the general procedure and elution of the column with 9% methanol (MeOH) in Chloroform (CHCl₃) to afford **3e** (0.271 g; 64%) from compound **2** (over three steps) as a white solid. m.p. 135–137 °C [α]_D²⁵ = +6.313 (*c* = 0.333 in MeOH); ¹H NMR (400 MHz, d₆-DMSO): δ (ppm) 7.33 (dd, *J* = 19.6 and 9.2 Hz, 1H), 7.11–7.05 (m, 1H), 6.84–6.82 (m, 1H), 5.28 (d, *J* = 4.8 Hz, 1H), 4.86–4.81 (m, 2H), 4.68 (d, *J* = 3.6 Hz, 1H), 3.73–3.69 (m, 2H), 3.61–3.55 (m, 3H). ¹³C{¹H} NMR (100 MHz, d₆-DMSO): δ (ppm) 153.9 (dd, *J*₁ = 8.8 Hz, *J*₂ = 2.0 Hz), 150.8 (d, *J* = 13.8 Hz), 148.4 (d, *J* = 13.8 Hz), 146.1 (d, *J* = 12.6 Hz), 143. (d, *J* = 12.6 Hz), 117.7 (d, *J* = 18.3 Hz), 112.9 (dd, *J*₁ = 5.8 Hz, *J*₂ = 3.3 Hz), 106.2, 106.0, 101.3, 72.6, 70.3, 67.7, 65.9. HRMS calcd. for C₁₁H₁₂F₂O₅Na⁺ (M + Na)⁺ 285.0545; found 285.0543.

2. Gelation studies of 3a-e in various solvents

Table S1 Gelation studies of **3a**, **3b**, **3c**, **3d**, and **3e** in various solvents.^a

Solvent	(MGC, ^b T _g ^c)				
	3a	3b	3c	3d	3e
Benzene	G, (0.5%, 42-43 °C)	G, (0.6%, 47-48 °C)	G, (0.6%, 40-41 °C)	G, (1%, 60-70 °C)	G, (0.5%, 60-70 °C)
Toluene	G, (0.6%, 51-52 °C)	G, (0.7%, 54-55 °C)	G, (0.7%, 53-54 °C)	G, (1%, 60-70 °C)	G, (0.5%, 60-70 °C)
<i>o</i> -xylene	G, (0.7%, 56-57 °C)	G, (0.7%, 55-56 °C)	G, (0.7%, 57-58 °C)	G, (1%, 60-70 °C)	G, (0.5%, 60-70 °C)
<i>m</i> -xylene	G, (0.7%, 58-59 °C)	G, (0.7%, 58-59 °C)	G, (0.8%, 59-60 °C)	G, (1%, 60-70 °C)	G, (0.5%, 60-70 °C)
<i>p</i> -xylene	G, (0.6%, 57-58 °C)	G, (0.8%, 55-56 °C)	G, (0.7%, 55-56 °C)	G, (1%, 60-70 °C)	G, (0.5%, 60-70 °C)
Chlorobenzene	G, (0.7%, 53-54 °C)	G, (0.7%, 56-57 °C)	G, (0.8%, 57-58 °C)	G, (1%, 60-70 °C)	G, (0.5%, 60-70 °C)
Hexane	PS	PS	PS	PS	PS
DCM	PS	PS	PS	PS	PS
Chloroform	PS	PS	PS	PS	PS
Ethyl acetate	PS	PS	PS	PS	PS
Aceto nitrile	S	S	S	S	S
Ethanol	S	S	S	S	S
Methanol	S	S	S	S	S
<i>n</i> -butyl alcohol	S	S	S	S	S
Amyl alcohol	S	S	S	S	S
Water	S	S	S	S	S
DMF	S	S	S	S	S
DMSO	S	S	S	S	S

^aG = Gel; S = Solution; PS = Partial soluble; ^bMGC = Minimum Gelation Concentration % (w/v). ^cTg= Gelation temperature.

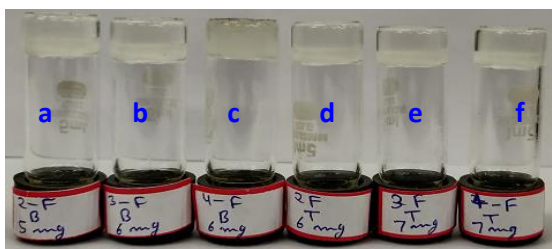


Fig. S1 Gels of **1-3** in Benzene (a) 0.5% w/v (b) 0.6% w/v (c) 0.6% w/v, and **1-3** in toluene (d) 0.6% w/v (e) 0.7% w/v (f) 0.7% w/v respectively.

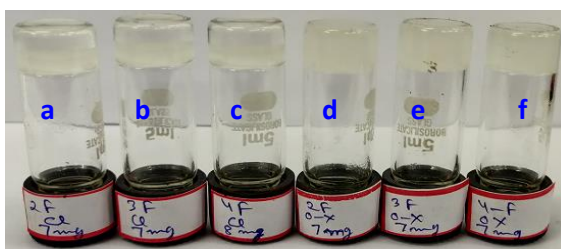


Fig. S2 Gels of **1-3** in Chlorobenzene (a) 0.7% w/v (b) 0.7% w/v (c) 0.8% w/v, and **1-3** in *o*-xylene (d) 0.7% w/v (e) 0.7% w/v (f) 0.7% w/v respectively.

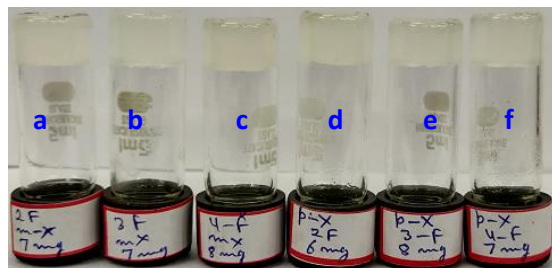


Fig. S3 Gels of **1-3** in *m*-xylene (a) 0.7% w/v (b) 0.7% w/v (c) 0.8% w/v, and **1-3** in *p*-xylene (d) 0.6% w/v (e) 0.8% w/v (f) 0.7% w/v respectively.

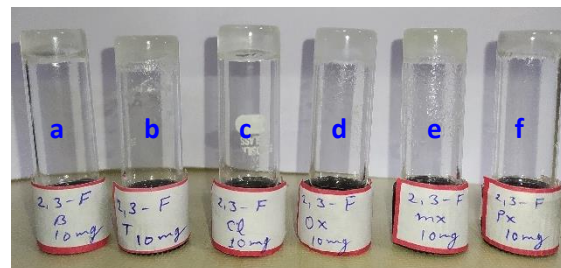


Fig. S4 Gels of **4** in (a) benzene 1% w/v (b) toluene 1% w/v (c) chlorobenzene 1 % w/v, (d) *o*-xylene 1% w/v (e) *m*-xylene 1% w/v and (f) *p*-xylene 1% w/v respectively.

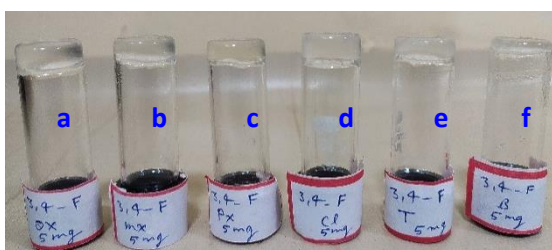


Fig. S5 Gels of **5** in (a) *o*-xylene 0.5% w/v (b) *m*-xylene 0.5% w/v (c) *p*-xylene 0.5 % w/v, (d) chlorobenzene 0.5 % w/v (e) toluene 0.5 % w/v and (f) benzene 0.5 % w/v respectively.

3. WXRD Data

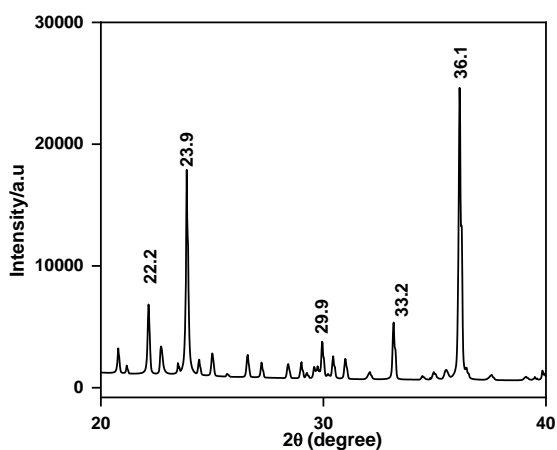


Fig. S6 WXR D diffractogram of 3a.

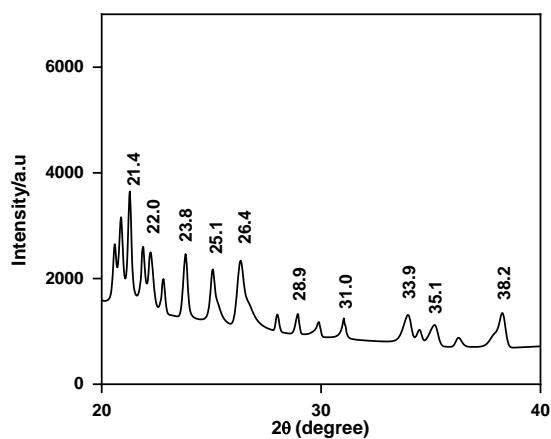


Fig. S7 WXR D diffractogram of 3b.

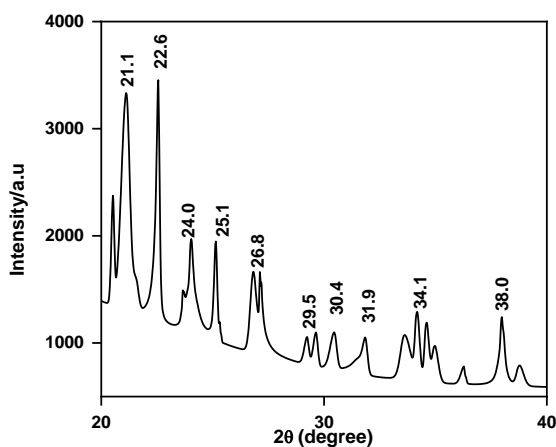


Fig. S8 WXR D diffractogram of 3c.

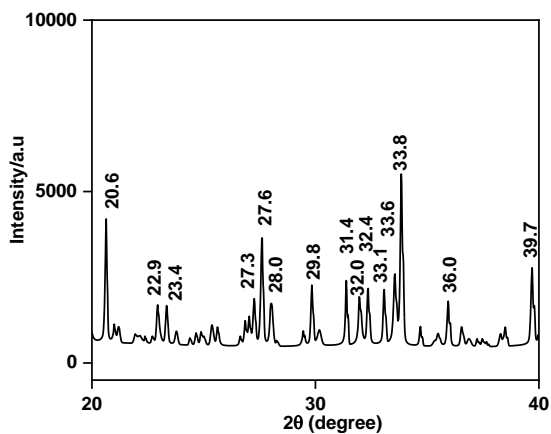


Fig. S9 WXR D diffractogram of 3d.

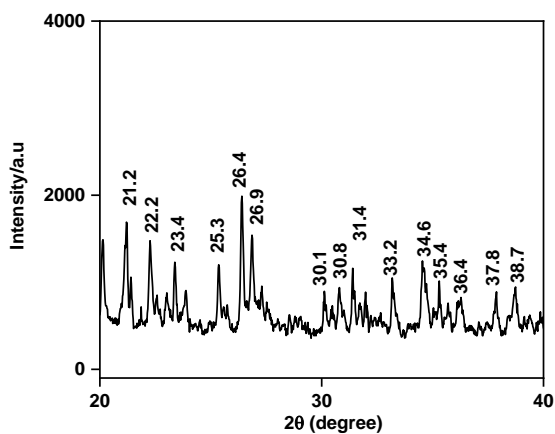


Fig. S10 WXR D diffractogram of 3e.

Table S2 WXR D of compound 3a

2θ	d spacing	2θ	d spacing
22.2	4.0	33.2	2.7
23.9	3.7	36.1	2.5

29.9	3.0		
------	-----	--	--

Table S3.WXRd of compound **3b**

2θ	d spacing	2θ	d spacing
21.4	4.2	28.9	3.1
22.0	4.0	31.0	2.9
23.8	3.7	33.9	2.6
25.1	3.5	35.1	2.6
26.4	3.4	38.2	2.4

Table S4. WXRd of compound **3c**

2θ	d spacing	2θ	d spacing
21.1	4.2	30.4	2.9
22.6	3.9	31.9	2.8
24.0	3.7	38.0	2.4
25.1	3.5	34.1	2.6
29.5	3.0	38.0	2.4

Table S5. WXRd of compound **3d**

2θ	d spacing	2θ	d spacing
20.6	4.3	32.0	2.8
22.9	3.9	32.4	2.8
23.4	3.8	33.1	2.7
27.3	3.3	33.6	2.7
27.6	3.2	33.8	2.7
28.0	3.2	36.0	2.5
29.8	3.0	39.7	2.3
31.4	2.8		

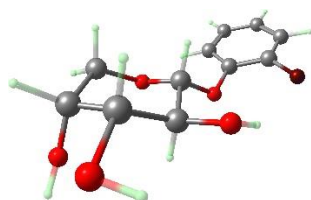
Table S6 WXRd of compound **3e**

2θ	d spacing	2θ	d spacing
21.2	4.2	31.4	2.8
22.2	4.0	33.2	2.7
23.4	3.8	34.6	2.6
25.3	3.5	35.4	2.5
26.4	3.4	36.4	2.5
26.9	3.3	37.8	2.4
30.1	3.0	38.7	2.3
30.8	2.9		

Table S7 Microstructure of *p*-xylene xerogels of **3a-e**.

Gelator	Solvent	Microstructure
3a	<i>p</i> -xylene	Sheet like
3b	<i>p</i> -xylene	Interconnected fiber bundles
3c	<i>p</i> -xylene	Interconnected fiber bundles
3d	<i>p</i> -xylene	Interconnected fiber bundles
3e	<i>p</i> -xylene	Interconnected fiber bundles

4. DFT results

**Fig. S11** DFT-optimized geometry of **3a**.**Table S8** DFT-optimized cartesian coordinates of **3a**.

C	9.014385	3.204506	6.545253
H	9.920781	3.494438	7.082162
C	9.110747	2.730689	5.233338
H	10.069361	2.635197	4.721276
C	7.953759	2.357179	4.545264
C	8.410619	2.706569	2.247788
H	8.110004	3.753363	2.475516
C	10.322919	3.409411	1.074191
H	11.405870	3.225015	1.048963
H	10.153138	4.485616	1.283457
C	9.718938	3.068360	-0.287628
H	10.037413	3.854465	-1.005063
C	8.188436	3.082309	-0.203191
H	7.841474	4.122026	-0.030482
C	7.726708	2.232992	0.971339
H	8.058072	1.190903	0.804710
O	7.970513	1.858712	3.270953
O	9.805206	2.614172	2.129704
O	10.168388	1.798971	-0.695250
H	9.559096	1.518285	-1.396939
O	7.682432	2.580787	-1.423096
H	6.750667	2.360782	-1.273536
O	6.324178	2.338385	1.058590
H	6.046636	1.869460	1.860546
C	6.605942	2.928535	6.488019
H	5.618108	2.996848	6.948312
C	6.710058	2.470768	5.179839
C	7.768499	3.298564	7.172402
H	7.695934	3.661780	8.200104
F	5.606151	2.130164	4.494511

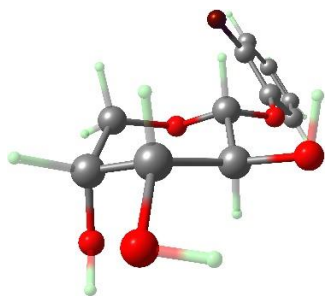


Fig. S12 DFT-optimized geometry of **3a'**.

Table S9 DFT-optimized cartesian coordinates of **3a'**.

C	8.707036	3.842081	6.352755
H	9.358180	4.649994	6.693374
C	8.398526	3.778245	4.998072
C	7.576657	2.764365	4.482164
C	8.049768	3.070836	2.149911
H	8.113052	4.180649	2.151988
C	10.275948	2.936148	1.386509
H	11.217508	2.432173	1.644236
H	10.433618	4.032077	1.446691
C	9.866388	2.558734	-0.034726
H	10.552011	3.074497	-0.740366
C	8.435866	3.039987	-0.301886
H	8.436416	4.152791	-0.322049
C	7.489370	2.588222	0.814530
H	7.474620	1.488856	0.846431
O	7.208139	2.628195	3.173646
O	9.323044	2.522816	2.348407
O	9.935105	1.162260	-0.187305
H	9.412669	0.959582	-0.979853
O	8.016298	2.519523	-1.543769
H	7.046145	2.542471	-1.537032
O	6.167500	3.003929	0.535258
H	6.099598	3.957932	0.687086
C	7.342800	1.891053	6.742281
H	6.920662	1.144837	7.419337
C	7.055310	1.824162	5.379227
C	8.177587	2.898291	7.234709
H	8.416619	2.953563	8.298910
H	6.420375	1.037639	4.966745
F	8.903409	4.727041	4.182140

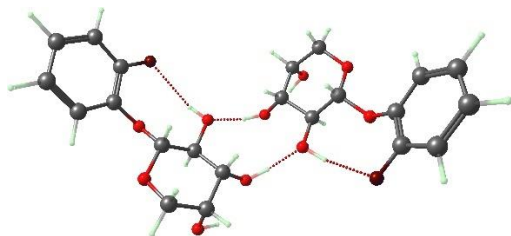


Fig. S13 DFT-optimized geometry of **3a-H**.

Table S10 DFT-optimized cartesian coordinates of **3a-H**.

C	7.511023	-7.158530	-7.282098
H	7.112307	-6.412089	-7.972893
C	6.631408	-7.951140	-6.538476
H	5.548235	-7.852139	-6.625088
C	7.138570	-8.909371	-5.658364
C	5.588075	-9.170542	-3.885068

H	6.142113	-8.302972	-3.460720
C	3.532363	-8.187466	-3.364068
H	2.574765	-7.935997	-3.840473
H	3.994764	-7.252743	-2.984606
C	3.286879	-9.133296	-2.192126
H	2.825480	-8.540186	-1.372946
C	4.601999	-9.732980	-1.655558
H	5.178495	-8.946470	-1.134258
C	5.439309	-10.250388	-2.820379
H	4.909883	-11.101334	-3.283408
O	6.338877	-9.741523	-4.924084
O	4.346564	-8.760768	-4.376643
O	2.436124	-10.174332	-2.604584
H	2.523887	-10.860078	-1.921448
O	4.286688	-10.784707	-0.776121
H	4.722334	-10.608922	0.083173
O	6.725884	-10.629482	-2.354976
H	7.276598	-10.817378	-3.132473
C	9.408369	-8.278617	-6.267602
H	10.482500	-8.427376	-6.139354
C	8.525309	-9.053182	-5.525629
C	8.893170	-7.324280	-7.151387
H	9.578786	-6.709375	-7.738934
F	8.994995	-9.964252	-4.652974
C	7.645955	-5.812499	5.397168
H	8.500780	-5.354041	5.899679
C	7.749498	-7.120040	4.912443
H	8.662571	-7.707757	5.021429
C	6.656494	-7.709146	4.273582
C	7.524408	-9.272727	2.717541
H	7.670176	-8.352385	2.108603
C	9.655721	-10.063228	2.163375
H	10.558914	-10.456027	2.650495
H	9.930282	-9.151722	1.593016
C	9.102464	-11.107436	1.198064
H	9.781258	-11.142818	0.318442
C	7.695158	-10.732156	0.693609
H	7.767012	-9.869174	0.006555
C	6.821407	-10.332431	1.877425
H	6.671647	-11.218132	2.518831
O	6.670605	-8.988892	3.794406
O	8.749060	-9.733742	3.205657
O	9.044291	-12.355756	1.843381
H	8.462407	-12.901746	1.288469
O	7.141668	-11.846026	0.036215
H	6.902937	-11.576674	-0.874460
O	5.586419	-9.815393	1.405610
H	5.099527	-9.465839	2.169665
C	5.356383	-5.679127	4.607053
H	4.414450	-5.143710	4.471334
C	5.474336	-6.974347	4.119329
C	6.454282	-5.096381	5.249485
H	6.373529	-4.077681	5.635436
F	4.442167	-7.553180	3.477167

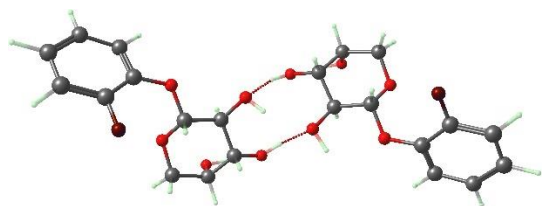


Fig. S14 DFT-optimized geometry of **3a'-H**.

Table S11 DFT-optimized cartesian coordinates of **3a'-H**.

C	7.997639	5.719318	5.196386
H	8.450976	6.706982	5.089256
C	7.893848	4.917262	4.065316
C	7.331389	3.635068	4.131810
C	8.154293	2.760073	2.039443
H	8.086612	3.673319	1.414441
C	10.445842	2.625239	1.626924
H	11.392149	2.499748	2.170181
H	10.472637	3.590632	1.083352
C	10.277020	1.481152	0.630054
H	10.978247	1.654725	-0.212821
C	8.851015	1.441036	0.050320
H	8.702256	2.324384	-0.603456
C	7.849061	1.526237	1.200499
H	7.980440	0.644022	1.849197
O	7.182312	2.796666	3.057691
O	9.419460	2.648779	2.608042
O	10.553283	0.262932	1.278181
H	10.224600	-0.432026	0.685304
O	8.726158	0.244274	-0.672164
H	7.993841	0.354197	-1.317198
O	6.513256	1.579798	0.691841
H	5.942288	1.837000	1.434341
C	6.939242	3.985657	6.503642
H	6.561686	3.611145	7.457768
C	6.858320	3.180749	5.366648
C	7.515394	5.256483	6.422680
H	7.591579	5.889052	7.309647
H	6.432274	2.176275	5.407084
F	8.340712	5.394362	2.887954
C	3.541919	0.902840	-7.669061
H	2.553757	1.301873	-7.908043
C	3.924578	0.860143	-6.332643
C	5.174903	0.352976	-5.945842
C	4.760721	0.106157	-3.595709
H	4.139198	1.012267	-3.444358
C	2.992362	-1.262762	-2.871415
H	2.423853	-2.143929	-3.199701
H	2.292623	-0.408533	-2.767614
C	3.646764	-1.552070	-1.524860
H	2.854918	-1.560016	-0.745940
C	4.647919	-0.445519	-1.165223
H	4.074813	0.487482	-0.964055
C	5.590947	-0.169564	-2.341448
H	6.183462	-1.075206	-2.541897
O	5.642374	0.285023	-4.666219
O	3.947116	-0.998539	-3.879148
O	4.310159	-2.790657	-1.587759

H	4.914810	-2.807540	-0.829012
O	5.337257	-0.873680	-0.015103
H	5.922799	-0.151605	0.277227
O	6.494630	0.894727	-2.067490
H	6.162661	1.438927	-1.333659
C	5.673423	-0.037508	-8.296487
H	6.369413	-0.391508	-9.060535
C	6.040311	-0.093434	-6.952240
C	4.417373	0.455826	-8.660711
H	4.117254	0.495546	-9.710047
H	7.008463	-0.489335	-6.639304
F	3.064098	1.329178	-5.405345

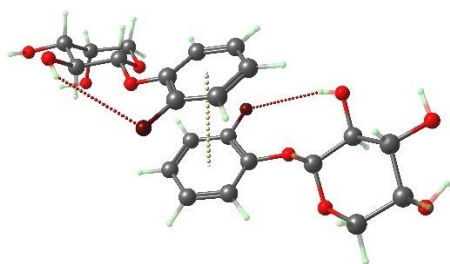


Fig. S15 DFT-optimized geometry of **3a- π** .

Table S12 DFT-optimized cartesian coordinates of **3a- π** .

C	2.140912	-9.134582	3.997728
H	1.505376	-8.977298	3.123299
C	1.778425	-8.559045	5.220435
H	0.857434	-7.985566	5.325698
C	2.594603	-8.741480	6.339495
C	1.705658	-6.979672	7.678840
H	2.066882	-6.306677	6.871253
C	-0.392672	-5.920033	7.724577
H	-1.461053	-6.171080	7.673343
H	-0.150079	-5.237216	6.884158
C	-0.104496	-5.202069	9.042380
H	-0.539871	-4.182459	8.973548
C	1.409127	-5.069605	9.250578
H	1.821001	-4.366701	8.496942
C	2.074054	-6.422244	9.050980
H	1.663863	-7.128661	9.795920
O	2.342523	-8.215057	7.576481
O	0.313830	-7.142479	7.585382
O	-0.674322	-5.925398	10.105507
H	-0.237875	-5.598982	10.908665
O	1.624745	-4.582692	10.559172
H	2.553548	-4.753261	10.775795
O	3.466800	-6.252488	9.205285
H	3.881975	-7.103200	8.993899
C	4.109713	-10.107704	5.014471
H	5.044522	-10.666215	4.949103
C	3.756955	-9.514784	6.217299
C	3.296872	-9.909354	3.893850
H	3.585015	-10.350368	2.937831
F	4.553868	-9.639755	7.291817
C	6.040510	-6.832155	6.574350
H	6.505402	-6.870701	7.562125
C	6.499401	-7.690879	5.570084

H	7.279541	-8.421253	5.779893
C	5.901527	-7.663181	4.308771
C	7.456772	-9.143162	3.261212
H	8.268197	-8.459830	3.596945
C	8.567753	-11.037581	4.124932
H	8.368821	-11.895160	4.781849
H	9.405068	-10.450672	4.553656
C	8.969204	-11.538476	2.739612
H	9.990341	-11.967760	2.817833
C	9.008388	-10.369794	1.748730
H	9.835656	-9.683255	2.023643
C	7.702556	-9.591971	1.824084
H	6.874093	-10.275767	1.562219
O	6.238893	-8.468204	3.259242
O	7.378605	-10.259610	4.113335
O	8.043268	-12.505061	2.306312
H	8.182898	-12.592456	1.349777
O	9.205827	-10.903631	0.457045
H	8.976565	-10.205240	-0.174516
O	7.793768	-8.505046	0.932658
H	6.954198	-8.024269	0.975225
C	4.381339	-5.925957	5.070502
H	3.551288	-5.255104	4.839831
C	4.841335	-6.774766	4.075864
C	4.986839	-5.951158	6.332549
H	4.619008	-5.309010	7.133230
F	4.270431	-6.769582	2.863386

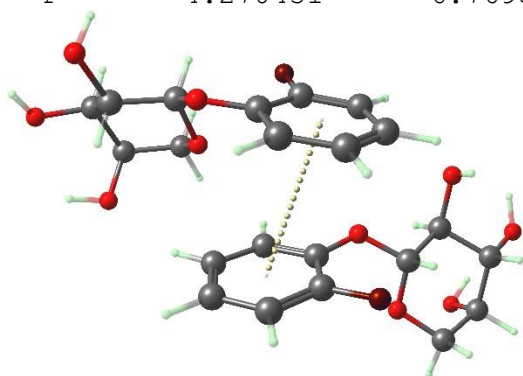


Fig. S16 DFT-optimized geometry of **3a'- π** .

Table S13 DFT-optimized cartesian coordinates of **3a'- π** .

C	11.804412	-4.518319	3.723941
H	11.946613	-4.910600	4.733305
C	10.847368	-5.118672	2.915782
C	10.606634	-4.669649	1.610713
C	8.514894	-5.761674	1.159793
H	8.671411	-6.581862	1.890624
C	6.509346	-5.133993	2.241669
H	6.035885	-4.237799	2.666285
H	6.621021	-5.888360	3.047846
C	5.623071	-5.708275	1.139304
H	4.730857	-6.166682	1.617090
C	6.388827	-6.800012	0.386334
H	6.544724	-7.659030	1.076763
C	7.764990	-6.298080	-0.058225
H	7.635525	-5.460552	-0.758902
O	9.729497	-5.237817	0.726910

O	7.776094	-4.729421	1.760431
O	5.254109	-4.685279	0.247670
H	4.942611	-5.135976	-0.553352
O	5.619386	-7.191228	-0.729786
H	6.231195	-7.615051	-1.351991
O	8.443626	-7.321113	-0.767864
H	8.715369	-8.004058	-0.137696
C	12.363306	-3.013267	1.918203
H	12.967852	-2.208263	1.495867
C	11.378002	-3.609239	1.131874
C	12.572291	-3.462859	3.224322
H	13.335160	-3.001376	3.855565
H	11.197251	-3.285711	0.107450
F	10.168789	-6.182118	3.404993
C	11.779578	-7.238680	-0.646918
H	11.054689	-7.420370	-1.441366
C	12.834935	-6.370249	-0.896466
C	13.756167	-6.033668	0.106986
C	14.820298	-4.165342	-0.988964
H	14.935780	-4.585046	-2.013667
C	13.498430	-2.375950	-1.799397
H	12.507234	-1.933182	-1.627575
H	13.546462	-2.728480	-2.849289
C	14.581621	-1.331426	-1.557624
H	14.537439	-0.580048	-2.373337
C	15.951444	-2.014332	-1.590240
H	16.140140	-2.367567	-2.628691
C	15.984286	-3.229804	-0.659624
H	15.829086	-2.887212	0.373955
O	14.817609	-5.185155	-0.036744
O	13.613580	-3.460903	-0.902578
O	14.372003	-0.726892	-0.302081
H	15.212297	-0.300629	-0.068675
O	16.925714	-1.073450	-1.197220
H	17.703284	-1.582260	-0.917597
O	17.261280	-3.835227	-0.692174
H	17.362023	-4.309750	-1.530319
C	12.572370	-7.523852	1.617170
H	12.468557	-7.964432	2.610623
C	13.607704	-6.625265	1.365692
C	11.651911	-7.826589	0.612040
H	10.828911	-8.516654	0.812810
H	14.320304	-6.341904	2.141586
F	12.964053	-5.850879	-2.135039

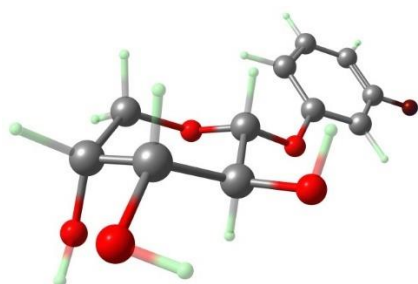


Fig. S17 DFT-optimized geometry of **3b**.

Table S14 DFT-optimized cartesian coordinates of **3b'**.

C	8.802433	3.689131	6.348125
---	----------	----------	----------

H	9.585444	4.363340	6.704071
C	8.777164	3.328604	4.997140
H	9.549751	3.681422	4.316372
C	7.774928	2.459284	4.544056
C	8.268479	2.764693	2.231617
H	8.147247	3.861172	2.411355
C	10.371654	3.097446	1.186386
H	11.403271	2.727330	1.263770
H	10.377878	4.193775	1.359046
C	9.831772	2.818954	-0.213169
H	10.338038	3.511081	-0.919447
C	8.326893	3.101393	-0.243615
H	8.169540	4.195722	-0.114052
C	7.617869	2.378277	0.902909
H	7.762966	1.294743	0.780570
O	7.645915	2.051565	3.246480
O	9.635873	2.439654	2.204178
O	10.073593	1.476819	-0.554123
H	9.483596	1.285383	-1.300753
O	7.819312	2.669019	-1.486171
H	6.865671	2.537039	-1.364112
O	6.225083	2.609000	0.843125
H	6.045312	3.521199	1.114010
C	6.888569	2.318371	6.770693
C	6.823330	1.944607	5.434433
C	7.862471	3.193031	7.252205
H	7.874528	3.460071	8.309991
H	6.045727	1.268880	5.077233
F	5.976509	1.826946	7.622242

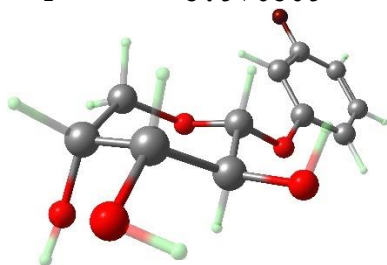


Fig. S18 DFT-optimized geometry of **3b'**.

Table S15 DFT-optimized cartesian coordinates of **3b'**.

C	8.772268	3.711446	6.334209
C	8.752834	3.367128	4.983326
H	9.517236	3.763208	4.317698
C	7.772851	2.467633	4.545232
C	8.266965	2.778314	2.232155
H	8.151653	3.875880	2.409986
C	10.377307	3.083763	1.189664
H	11.403791	2.701069	1.272506
H	10.397603	4.181176	1.353400
C	9.836299	2.801061	-0.208650
H	10.354173	3.479706	-0.919479
C	8.336084	3.105241	-0.244445
H	8.194273	4.202218	-0.119080
C	7.614661	2.396378	0.902991
H	7.743913	1.310507	0.784266
O	7.638280	2.069446	3.246218
O	9.631430	2.443469	2.211493

O	10.058764	1.452502	-0.538261
H	9.470205	1.264844	-1.286948
O	7.825226	2.675312	-1.486502
H	6.869306	2.558932	-1.366566
O	6.225272	2.647116	0.840365
H	6.059377	3.564420	1.102946
C	6.915909	2.277248	6.797028
C	6.855392	1.917826	5.452414
C	7.874492	3.186678	7.257532
H	7.939080	3.485132	8.304900
H	6.106605	1.218844	5.076740
H	6.199634	1.847622	7.501698
F	9.707215	4.577838	6.754525

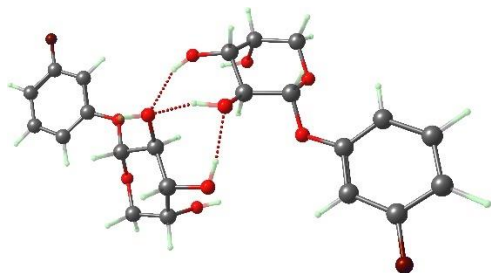


Fig. S19 DFT-optimized geometry of **3b-H**.

Table S16 DFT-optimized cartesian coordinates of **3b-H**.

C	13.365715	4.683732	-2.618749
H	13.915888	5.507070	-3.080945
C	12.253316	4.970195	-1.820409
H	11.911936	5.995988	-1.689891
C	11.549210	3.909537	-1.235957
C	10.246547	5.283858	0.221322
H	11.220639	5.683776	0.601873
C	9.366073	7.447694	-0.057269
H	8.925893	8.071039	-0.847112
H	10.288342	7.942681	0.311189
C	8.377910	7.296529	1.088711
H	8.289073	8.277685	1.601558
C	8.877995	6.272296	2.126076
H	9.766954	6.696483	2.645391
C	9.324503	4.990357	1.409616
H	8.444001	4.462657	1.019377
O	10.455955	4.074873	-0.429427
O	9.677857	6.202011	-0.660933
O	7.144198	6.868759	0.575276
H	6.641057	6.552294	1.344569
O	7.804257	6.083329	3.009763
H	7.890483	5.271393	3.557543
O	9.980190	4.069600	2.297367
H	10.882789	4.369377	2.483173
C	13.041178	2.339029	-2.265215
C	11.936209	2.582337	-1.458837
C	13.775015	3.370176	-2.851803
H	14.635991	3.131886	-3.478166
H	11.380595	1.761930	-1.003268
F	13.416674	1.070142	-2.475269
C	3.023530	3.768330	7.161850
H	2.453033	3.026393	7.726292
C	3.827872	3.345798	6.099037

H	3.859227	2.297015	5.807431
C	4.554876	4.301640	5.376729
C	5.881903	2.712819	4.183522
H	6.163467	2.299501	5.177595
C	5.374548	0.592800	3.295429
H	4.534141	0.061009	2.828521
H	5.648526	0.065441	4.232846
C	6.568536	0.589459	2.349755
H	6.957090	-0.449498	2.286810
C	7.691156	1.482956	2.898611
H	8.133236	1.001799	3.795277
C	7.136581	2.845749	3.322693
H	6.833330	3.394668	2.413179
O	5.370783	3.999924	4.326407
O	4.915855	1.902658	3.573603
O	6.157320	1.058748	1.090717
H	6.973991	1.294474	0.621756
O	8.643299	1.588545	1.854301
H	9.287677	2.296216	2.021708
O	8.071494	3.588701	4.093900
H	8.919502	3.617471	3.612882
C	3.646534	6.042403	6.754098
C	4.467192	5.661897	5.700242
C	2.920409	5.117559	7.504380
H	2.291035	5.462789	8.326024
H	5.041421	6.397303	5.135462
F	3.558235	7.344739	7.064226

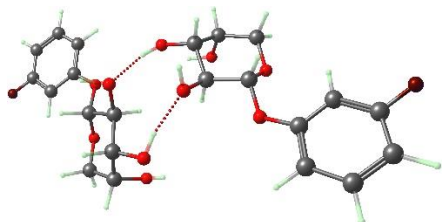


Fig. S20 DFT-optimized geometry of **3b'-H**.

Table S17 DFT-optimized cartesian coordinates of **3b'-H**.

C	14.802797	5.127223	2.046419
C	13.425526	5.266466	2.212686
H	12.847690	5.835700	1.486772
C	12.822931	4.607179	3.290728
C	10.718526	5.714139	3.045321
H	11.283987	6.677183	3.119125
C	9.580367	6.426114	1.107783
H	9.411041	6.093999	0.074535
H	10.092383	7.410249	1.082384
C	8.246295	6.570132	1.826593
H	7.722273	7.453244	1.402285
C	8.458033	6.816950	3.331289
H	8.894715	7.831481	3.469861
C	9.450077	5.800035	3.895615
H	8.989848	4.802253	3.881251
O	11.486355	4.678532	3.564795
O	10.416628	5.448316	1.706943
O	7.495507	5.396485	1.653473
H	6.808692	5.437042	2.340728
O	7.195359	6.721003	3.937580

H	7.267729	6.406133	4.862321
O	9.761768	6.082568	5.257652
H	10.443591	6.767896	5.301644
C	14.957141	3.693453	3.955687
C	13.584514	3.815904	4.162314
C	15.587807	4.353460	2.894986
H	16.660965	4.273395	2.715387
H	13.076522	3.316046	4.988727
H	15.551373	3.077532	4.635195
F	15.384395	5.759157	1.015596
C	1.731830	3.334180	8.144774
C	3.042811	3.211060	7.688102
H	3.671357	2.402493	8.055923
C	3.487490	4.107426	6.708244
C	5.787705	3.503379	6.897937
H	5.721761	3.807789	7.970433
C	6.748747	1.432059	7.479951
H	6.580182	0.357909	7.322718
H	6.698873	1.641141	8.568962
C	8.125910	1.814577	6.956977
H	8.888368	1.386408	7.642214
C	8.305343	3.342152	6.950971
H	8.347463	3.692542	8.009196
C	7.098433	4.016521	6.289361
H	7.075364	3.753194	5.221940
O	4.747056	4.079009	6.181224
O	5.707637	2.106491	6.796473
O	8.277880	1.322249	5.650622
H	9.038334	1.799430	5.279591
O	9.516103	3.586234	6.285269
H	9.641304	4.535998	6.082056
O	7.172666	5.432031	6.358047
H	7.450591	5.709786	7.241631
C	1.322472	5.179476	6.679266
C	2.628239	5.092139	6.200172
C	0.855752	4.301734	7.663939
H	-0.162059	4.351515	8.053705
H	3.009885	5.774480	5.439008
H	0.654302	5.948626	6.284048
F	1.300334	2.468933	9.075859

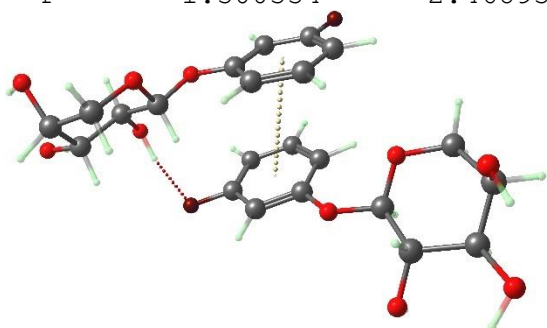


Fig. S21 DFT-optimized geometry of **3b- π** .

Table S18 DFT-optimized cartesian coordinates of **3b- π** .

C	7.677611	6.459966	1.835566
H	7.242902	7.289898	1.275085
C	7.158845	6.145928	3.093852
H	6.309633	6.698864	3.488713

C	7.685521	5.055639	3.797207
C	6.451953	5.469109	5.800757
H	6.877508	6.501916	5.793511
C	4.232231	6.282104	6.041536
H	3.258882	6.186333	5.541007
H	4.533107	7.349549	6.022080
C	4.114554	5.819090	7.488947
H	3.521485	6.574319	8.046800
C	5.512505	5.736930	8.107939
H	5.926597	6.767646	8.183072
C	6.447188	4.908954	7.224118
H	6.051693	3.884589	7.159006
O	7.232120	4.632906	5.012639
O	5.142080	5.494927	5.291908
O	3.498089	4.555779	7.524890
H	3.679305	4.198029	8.408651
O	5.397234	5.150660	9.384487
H	6.275554	4.808634	9.614662
O	7.726446	4.809598	7.815338
H	8.164292	5.672023	7.765159
C	9.214207	4.652412	2.004787
C	8.731486	4.298323	3.254215
C	8.711561	5.715121	1.264892
H	9.097161	5.924067	0.266778
H	9.144341	3.453477	3.805524
F	10.216094	3.898855	1.472328
C	4.560413	3.982623	2.568046
H	4.308720	3.568349	3.545545
C	5.467880	3.307456	1.748257
H	5.879211	2.349765	2.059956
C	5.814574	3.864329	0.509557
C	7.513174	2.256055	0.043458
H	7.939365	2.461848	1.050486
C	7.453573	-0.066088	0.497446
H	6.739352	-0.901147	0.480242
H	7.829384	0.052814	1.535375
C	8.629413	-0.380532	-0.422617
H	9.244129	-1.168703	0.062870
C	9.489476	0.874143	-0.598687
H	9.985959	1.105143	0.369490
C	8.630712	2.079975	-0.987398
H	8.136636	1.868872	-1.947761
O	6.712151	3.316566	-0.359313
O	6.734060	1.084572	0.094131
O	8.148948	-0.809627	-1.672451
H	8.893588	-0.704791	-2.286481
O	10.449367	0.614950	-1.600929
H	10.724784	1.480355	-1.943397
O	9.447254	3.213976	-1.186646
H	9.866376	3.442730	-0.342237
C	4.339292	5.708901	0.929770
C	5.240246	5.070585	0.089086
C	3.983633	5.189917	2.172003
H	3.279875	5.730333	2.806015
H	5.516415	5.502135	-0.873110
F	3.817607	6.884795	0.536619

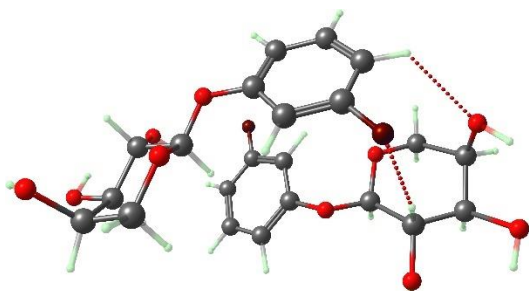


Fig. S22 DFT-optimized geometry of **3b'- π** .

Table S19 DFT-optimized cartesian coordinates of **3b'- π** .

C	11.544681	5.180269	4.824575
C	10.498383	4.586400	5.523073
H	9.543714	4.390846	5.041506
C	10.721462	4.218507	6.855670
C	8.526058	4.193544	7.786881
H	8.675208	5.249250	8.122765
C	6.514740	4.746529	6.652349
H	6.089358	4.672459	5.642249
H	6.569162	5.818568	6.932330
C	5.624925	4.011390	7.648383
H	4.692341	4.599993	7.780154
C	6.343245	3.930558	8.998871
H	6.404429	4.960011	9.419342
C	7.767611	3.393309	8.846179
H	7.722111	2.358835	8.480123
O	9.766258	3.584078	7.601597
O	7.812812	4.186626	6.577027
O	5.343665	2.721008	7.167581
H	5.098511	2.189418	7.942012
O	5.592988	3.089372	9.846335
H	6.196905	2.781150	10.540306
O	8.408557	3.346815	10.106351
H	8.544165	4.253000	10.420390
C	13.001137	5.012332	6.725717
C	11.971477	4.420780	7.457637
C	12.798159	5.403682	5.396738
H	13.578748	5.895309	4.812602
H	12.107885	4.109042	8.494343
H	13.973799	5.180612	7.194085
F	11.348773	5.524874	3.546491
C	8.237045	1.121461	5.741984
C	9.603768	1.016621	5.508194
H	10.252991	0.580269	6.263473
C	10.094301	1.452569	4.271905
C	12.387374	1.399142	4.920181
H	12.125356	2.141976	5.705683
C	13.426227	0.023010	6.541704
H	13.399867	-1.017070	6.895571
H	13.146664	0.689085	7.384488
C	14.839635	0.370982	6.082858
H	15.481240	0.459010	6.986071
C	14.820489	1.719676	5.358658
H	14.589521	2.517379	6.097004
C	13.734061	1.741018	4.280702
H	13.944567	0.944717	3.550861

O	11.416427	1.402451	3.927867
O	12.470812	0.115870	5.499920
O	15.317229	-0.629035	5.217293
H	16.055569	-0.223273	4.734791
O	16.088865	1.931301	4.775397
H	15.948352	2.560815	4.049733
O	13.773455	2.961033	3.572872
H	13.424928	3.665345	4.141215
C	7.856136	2.046367	3.578552
C	9.221300	1.965839	3.302984
C	7.341090	1.626685	4.809276
H	6.287904	1.715743	5.073108
H	9.639125	2.303875	2.353378
H	7.179180	2.453831	2.823108
F	7.772031	0.709274	6.940445

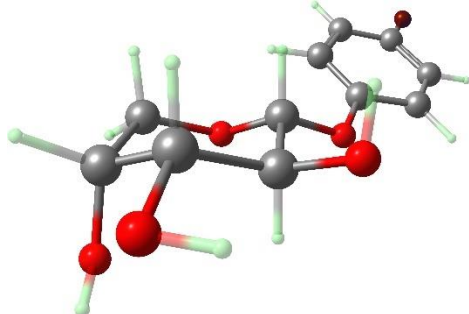


Fig. S23 DFT-optimized geometry of **3c**.

Table S20 DFT-optimized cartesian coordinates of **3c**.

C	8.842698	3.673601	6.349460
C	8.805242	3.298007	5.003076
H	9.588974	3.629363	4.323379
C	7.784865	2.453064	4.548082
C	8.268545	2.757483	2.234818
H	8.137442	3.853445	2.415379
C	10.367253	3.119460	1.187657
H	11.404009	2.763410	1.262997
H	10.358746	4.215505	1.363125
C	9.829699	2.837687	-0.212131
H	10.326308	3.538228	-0.917035
C	8.321287	3.100242	-0.240321
H	8.149616	4.192188	-0.107998
C	7.622609	2.365983	0.905373
H	7.781207	1.284511	0.781096
O	7.656808	2.038276	3.248543
O	9.641391	2.448762	2.203609
O	10.089060	1.499669	-0.556808
H	9.500080	1.301724	-1.302558
O	7.817831	2.663753	-1.483182
H	6.866156	2.519311	-1.359414
O	6.226675	2.578939	0.846598
H	6.036370	3.488891	1.118090
C	6.864883	2.336646	6.787105
C	6.819946	1.971802	5.443237
C	7.875887	3.191283	7.224693
H	6.037994	1.312495	5.061812
H	6.122706	1.972858	7.500526
H	9.629831	4.327909	6.729529

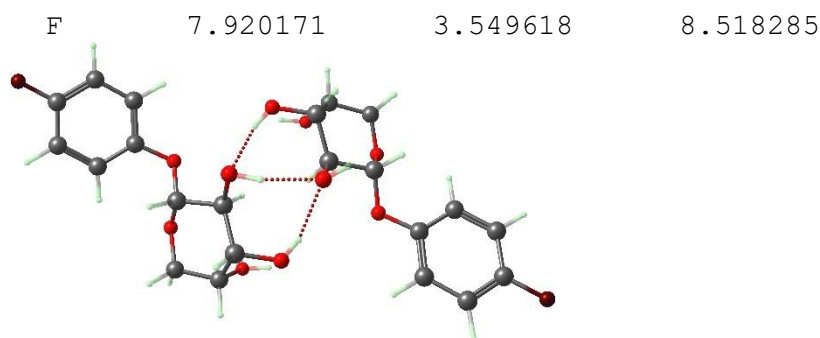


Fig. S24 DFT-optimized geometry of **3c-H**.

Table S21 DFT-optimized cartesian coordinates of **3c-H**.

C	13.300324	5.996161	1.098936
C	12.027617	5.595255	1.515220
H	11.159823	5.776975	0.882263
C	11.879265	4.915670	2.730732
C	9.508693	5.147124	2.834569
H	9.687802	6.244688	2.780546
C	7.879739	5.214400	1.133956
H	7.672581	4.760496	0.155027
H	7.972300	6.312644	1.001421
C	6.729474	4.919185	2.086387
H	5.843285	5.498620	1.749833
C	7.078561	5.376913	3.510256
H	7.105510	6.485849	3.538626
C	8.466191	4.865561	3.916284
H	8.415536	3.767312	4.025523
O	10.672554	4.491456	3.218424
O	9.100328	4.659598	1.584185
O	6.470352	3.538029	2.079190
H	5.938832	3.366940	2.873279
O	6.042782	4.869894	4.333074
H	6.242010	4.971682	5.278582
O	8.941672	5.486869	5.103500
H	8.230402	5.486734	5.770210
C	14.272387	5.007746	3.092361
C	13.002051	4.619714	3.514629
C	14.405586	5.700036	1.889494
H	12.854120	4.088437	4.456926
H	15.161325	4.789002	3.687459
H	13.444442	6.525713	0.155017
F	15.627160	6.085312	1.482877
C	2.522122	1.716938	9.293221
C	3.801955	1.790471	8.734499
H	4.622112	1.212876	9.160189
C	4.011253	2.573714	7.593531
C	6.398500	2.538226	7.708126
H	6.280278	2.976775	8.731097
C	7.921830	0.909482	8.465038
H	8.030384	-0.183332	8.482403
H	7.897845	1.278551	9.511268
C	9.102198	1.530037	7.733064
H	10.007574	1.399047	8.363239
C	8.894128	3.042414	7.519221
H	8.955360	3.552180	8.507590
C	7.494473	3.294340	6.951121

H	7.454387	2.951237	5.909111
O	5.230547	2.713057	6.980576
O	6.689761	1.176442	7.814347
O	9.246324	0.905684	6.485560
H	9.823943	1.495017	5.971075
O	9.930606	3.454664	6.665931
H	9.702963	4.252380	6.138064
O	7.165972	4.692846	6.920404
H	7.027151	5.024638	7.820168
C	1.667850	3.176538	7.549485
C	2.945211	3.260795	6.999167
C	1.472610	2.408594	8.697085
H	3.141017	3.855833	6.104744
H	0.820579	3.702482	7.105066
H	2.328175	1.111561	10.180873
F	0.244353	2.330779	9.232839

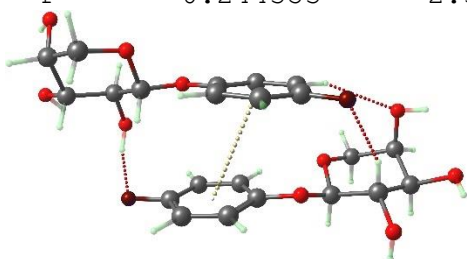


Fig. S25 DFT-optimized geometry of **3c- π** .

Table. S22 DFT-optimized cartesian coordinates of **3c- π** .

C	0.982593	0.633011	-5.225089
C	2.367405	0.454547	-5.199918
H	2.854200	0.076557	-4.305210
C	3.119228	0.697838	-6.356490
C	5.344827	0.467533	-5.414622
H	5.328194	1.468251	-4.915355
C	5.906829	-0.696814	-3.409103
H	5.486769	-1.487988	-2.772414
H	5.991867	0.229922	-2.805369
C	7.286911	-1.103136	-3.905920
H	7.984285	-1.113161	-3.042175
C	7.770050	-0.062438	-4.917128
H	7.930396	0.897837	-4.376568
C	6.725863	0.165274	-6.010105
H	6.607233	-0.764083	-6.584906
O	4.457362	0.450759	-6.480908
O	4.993892	-0.522163	-4.475941
O	7.205565	-2.373103	-4.507136
H	7.991333	-2.457946	-5.070809
O	8.974880	-0.523312	-5.486458
H	9.082331	-0.054500	-6.329126
O	7.182663	1.139474	-6.927538
H	7.200273	2.000963	-6.485349
C	1.106871	1.318520	-7.556361
C	2.488058	1.141883	-7.526382
C	0.380127	1.052914	-6.401596
H	3.100678	1.317584	-8.411891
H	0.591789	1.649558	-8.460046
H	0.373023	0.394451	-4.352703
F	-0.979086	1.174972	-6.441086

C	3.239766	-2.265759	-8.399426
C	1.910956	-2.313902	-7.964963
H	1.108360	-2.147877	-8.680798
C	1.632696	-2.591350	-6.622278
C	-0.719742	-2.298301	-6.871930
H	-0.536334	-1.357105	-7.439148
C	-2.025877	-3.168010	-8.649353
H	-2.076021	-4.062141	-9.286427
H	-1.859189	-2.282620	-9.298620
C	-3.345533	-2.992902	-7.905099
H	-4.115404	-2.669322	-8.638205
C	-3.187331	-1.898530	-6.847161
H	-3.052802	-0.922813	-7.364381
C	-1.951316	-2.139192	-5.975132
H	-2.073752	-3.092229	-5.439132
O	0.374429	-2.603718	-6.078190
O	-0.930320	-3.358575	-7.775784
O	-3.707099	-4.205317	-7.291428
H	-4.359531	-3.967951	-6.612966
O	-4.352735	-1.883804	-6.050220
H	-4.104991	-1.459083	-5.213482
O	-1.855875	-1.124687	-4.996478
H	-1.726369	-0.275511	-5.448378
C	4.004359	-2.834896	-6.166909
C	2.681854	-2.863635	-5.733105
C	4.263186	-2.519638	-7.496970
H	2.436367	-3.081154	-4.692136
H	4.840184	-3.009194	-5.488523
H	3.483768	-2.035802	-9.438389
F	5.546499	-2.442243	-7.913911

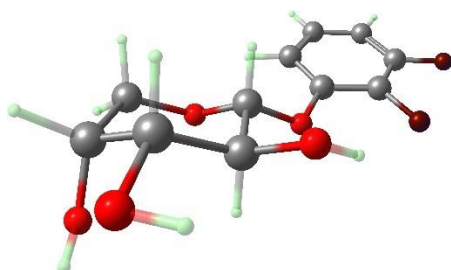


Fig. S26 DFT-optimized geometry of **3d**.

Table S23 DFT-optimized cartesian coordinates of **3d**.

C	8.925425	3.502409	6.439579
C	8.984599	3.094811	5.103966
C	7.886611	2.440283	4.535452
C	8.397391	2.769205	2.231185
H	8.212284	3.845844	2.443825
C	10.404261	3.222000	1.085371
H	11.455054	2.901509	1.084073
H	10.368093	4.313748	1.277400
C	9.788163	2.938993	-0.283669
H	10.211329	3.673739	-1.000990
C	8.268731	3.134502	-0.228630
H	8.041828	4.209184	-0.071514
C	7.693592	2.353497	0.943556
H	7.920175	1.281465	0.794967
O	7.838055	1.990787	3.250384

O	9.773550	2.515094	2.144009
O	10.090153	1.621275	-0.671932
H	9.463553	1.407415	-1.381928
O	7.728964	2.681701	-1.452444
H	6.776306	2.568375	-1.315497
O	6.307376	2.601108	0.991935
H	5.949065	2.103405	1.741970
C	6.708441	2.596044	6.644197
C	6.742381	2.197918	5.308125
C	7.793328	3.254027	7.218848
H	7.730584	3.554839	8.266057
H	9.875834	3.249624	4.496321
H	9.783648	4.010851	6.884336
F	5.686485	1.593341	4.756150
F	5.608420	2.346191	7.359357

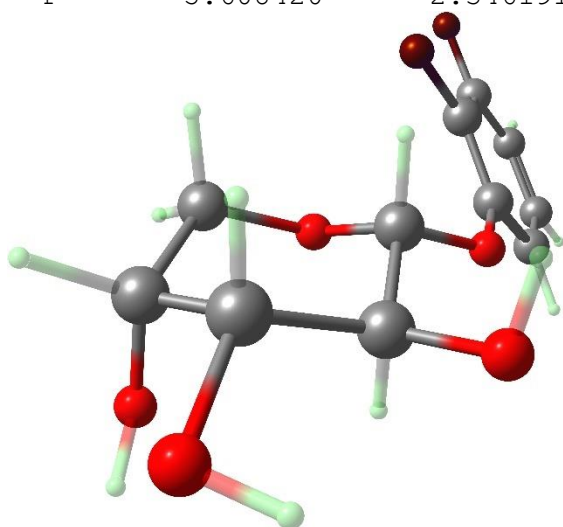


Fig. S27 DFT-optimized geometry of **3d'**.

Table S24 DFT-optimized cartesian coordinates of **3d'**.

C	8.745447	3.799521	6.347485
C	8.430154	3.769861	4.985830
C	7.581045	2.772615	4.484992
C	8.044973	3.089858	2.150673
H	8.094953	4.200732	2.145179
C	10.271448	2.971546	1.387715
H	11.218889	2.482821	1.652545
H	10.414495	4.069896	1.435642
C	9.866273	2.570961	-0.028116
H	10.546354	3.084377	-0.740647
C	8.430459	3.032782	-0.302283
H	8.418988	4.145174	-0.339067
C	7.488255	2.587316	0.820576
H	7.484956	1.488347	0.866991
O	7.207087	2.646326	3.180054
O	9.322376	2.556650	2.354005
O	9.950381	1.173395	-0.160174
H	9.435826	0.952792	-0.953049
O	8.017342	2.489316	-1.536210
H	7.046951	2.498577	-1.530248
O	6.162375	2.985441	0.537448
H	6.089559	3.943853	0.656116
C	7.339108	1.901568	6.741585

C	7.038051	1.842695	5.382791
C	8.204857	2.880554	7.238056
H	8.470340	2.947573	8.294243
H	6.381111	1.073826	4.973420
H	6.903653	1.168271	7.423731
F	8.956701	4.715546	4.191243
F	9.576028	4.753954	6.779009

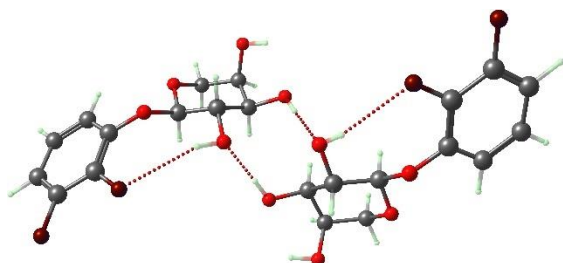


Fig. S28 DFT-optimized geometry of **3d-H**.

Table S25 DFT-optimized cartesian coordinates of **3d-H**.

C	12.737758	5.478622	2.420956
C	11.415751	5.125685	2.140890
C	11.008256	3.800082	2.314947
C	8.707146	3.829199	2.868654
H	9.088899	3.936548	3.908531
C	7.171603	5.560074	3.186934
H	6.853439	6.501083	2.718099
H	7.528941	5.777144	4.214423
C	5.987870	4.601723	3.259669
H	5.289835	4.982672	4.035500
C	6.432863	3.191028	3.683583
H	6.767918	3.216493	4.740906
C	7.624220	2.755430	2.833254
H	7.296362	2.649808	1.784350
O	9.740774	3.369173	2.037064
O	8.235997	5.054588	2.393994
O	5.364509	4.540185	2.001046
H	4.821295	3.734877	2.026688
O	5.308718	2.360676	3.524105
H	5.553192	1.411957	3.591313
O	8.146370	1.536025	3.333275
H	8.982931	1.356299	2.875472
C	13.238172	3.206737	3.043875
C	11.917929	2.841322	2.775338
C	13.654878	4.523628	2.869562
H	14.693945	4.776394	3.088310
H	10.683503	5.850368	1.784061
H	13.062868	6.511918	2.282095
F	11.516243	1.577589	2.960184
F	14.089288	2.276423	3.482438
C	0.743256	-3.287264	5.129889
C	2.048788	-3.024396	5.551831
C	2.993471	-2.582995	4.621623
C	4.563030	-1.220921	5.759108
H	3.780882	-0.446570	5.593865
C	4.879464	-0.545135	7.974264
H	4.910957	-0.970018	8.986816
H	4.075015	0.217592	7.934454

C	6.215595	0.120677	7.660339
H	6.279342	1.051662	8.262969
C	6.308209	0.515501	6.176979
H	5.583727	1.329915	5.971009
C	5.917372	-0.679701	5.311935
H	6.659780	-1.484356	5.453310
O	4.296799	-2.333541	4.943873
O	4.580373	-1.620932	7.096095
O	7.261060	-0.763652	7.978848
H	8.039876	-0.412751	7.515891
O	7.631476	0.941262	5.961757
H	7.815492	1.056543	5.004916
O	5.847464	-0.280318	3.953136
H	5.464923	-1.010400	3.440663
C	1.321833	-2.673165	2.873625
C	2.625794	-2.394027	3.284774
C	0.374604	-3.119185	3.791539
H	-0.637516	-3.327652	3.439854
H	2.363584	-3.158062	6.587521
H	0.001224	-3.636220	5.851219
F	3.528642	-1.939280	2.404825
F	0.998591	-2.494193	1.591243

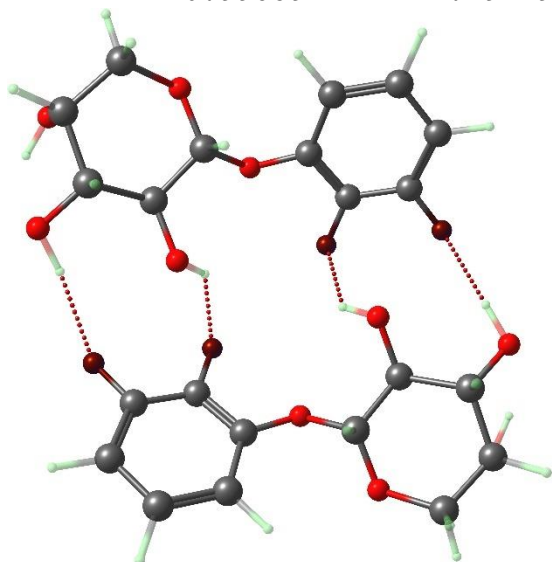


Fig. S29 DFT-optimized geometry of **3d-H_a**.

Table S26 DFT-optimized cartesian coordinates of **3d-H_a**.

C	6.890122	7.588356	3.722183
C	6.197776	6.635124	2.971017
C	5.160708	5.907509	3.566164
C	4.014741	5.230446	1.595123
H	3.933208	6.327259	1.430668
C	4.606991	4.769262	-0.636114
H	5.395869	4.250309	-1.197593
H	4.590146	5.832494	-0.952079
C	3.254071	4.137394	-0.957145
H	2.993622	4.414888	-2.000848
C	2.176035	4.695344	-0.021313
H	2.011637	5.768891	-0.249804
C	2.641607	4.588731	1.422493
H	2.751530	3.518449	1.673560
O	4.398541	4.986971	2.923903

O	4.964499	4.668062	0.735297
O	3.339735	2.741574	-0.809259
H	2.421470	2.433118	-0.740636
O	0.995435	3.949166	-0.223845
H	0.429381	4.074369	0.554877
O	1.684451	5.230402	2.229441
H	1.803420	4.929397	3.140594
C	5.547348	7.084856	5.646681
C	4.858334	6.121454	4.916538
C	6.570294	7.824399	5.062005
H	7.096050	8.568473	5.662418
H	6.453791	6.429970	1.931107
H	7.699711	8.154665	3.256637
F	3.851674	5.432838	5.481995
F	5.192235	7.305182	6.923199
C	-2.832842	6.654056	3.507515
C	-2.070118	7.014673	4.621635
C	-0.931200	6.269667	4.949662
C	0.120156	7.896281	6.335636
H	-0.015516	8.547412	5.444642
C	-0.585431	9.536478	7.869893
H	-1.315867	9.655605	8.681830
H	-0.792103	10.303814	7.095535
C	0.823266	9.753418	8.417694
H	0.930090	10.834840	8.648904
C	1.866868	9.377329	7.359692
H	1.814250	10.099633	6.518765
C	1.568296	7.992099	6.807240
H	1.694609	7.257475	7.622642
O	-0.084610	6.555796	5.969730
O	-0.789102	8.233590	7.342238
O	1.005614	8.966859	9.568847
H	1.967049	8.918848	9.697871
O	3.136625	9.411779	7.975823
H	3.742463	8.870786	7.445079
O	2.450426	7.756568	5.736019
H	2.451154	6.806294	5.557584
C	-1.359855	4.812838	3.063213
C	-0.605024	5.142189	4.184549
C	-2.482185	5.558261	2.715175
H	-3.058850	5.267947	1.835473
H	-2.352784	7.856584	5.253983
H	-3.721450	7.236498	3.254711
F	0.480640	4.420019	4.510496
F	-0.975750	3.771852	2.306869

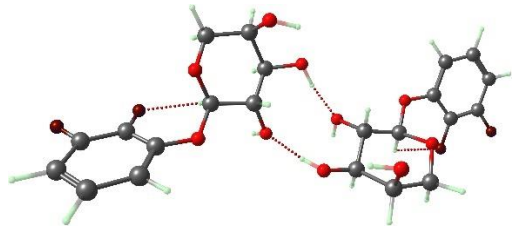


Fig. S30 DFT-optimized geometry of **3d'-H**.

Table S27 DFT-optimized cartesian coordinates of **3d'-H**.

C	14.562080	6.396760	4.152388
C	13.204800	6.116797	3.971078

C	12.789704	4.807271	3.690395
C	10.553784	5.319525	2.990746
H	10.354602	6.131537	3.722988
C	10.193792	6.824667	1.230932
H	10.683284	7.174418	0.311821
H	10.069003	7.686843	1.916932
C	8.830128	6.235715	0.891627
H	8.147307	7.069502	0.623044
C	8.226635	5.505712	2.104294
H	7.970410	6.268043	2.876163
C	9.258377	4.552957	2.722834
H	9.479813	3.745396	2.011668
O	11.496129	4.420932	3.504669
O	11.056880	5.861045	1.806343
O	8.971886	5.329149	-0.173672
H	8.156305	4.802163	-0.176619
O	7.081578	4.845501	1.638107
H	6.660834	4.321255	2.349396
O	8.765073	3.924532	3.897048
H	8.487845	4.591467	4.540064
C	15.106986	4.086866	3.833375
C	13.760086	3.797265	3.627271
C	15.523686	5.395959	4.093464
H	16.571390	5.657743	4.249338
H	13.417681	2.785338	3.405679
H	15.846055	3.284554	3.780710
F	12.329312	7.129846	4.079167
F	14.911747	7.662276	4.403250
C	0.436894	0.360512	1.896410
C	1.718845	0.707354	2.331230
C	2.522322	1.549224	1.550179
C	4.628904	1.117284	2.611354
H	4.244026	0.950046	3.640707
C	5.536039	-1.046875	2.587154
H	5.531918	-1.949080	1.960481
H	5.115037	-1.303406	3.580422
C	6.964513	-0.542621	2.751439
H	7.504710	-1.243024	3.423335
C	6.983574	0.848971	3.406220
H	6.643582	0.742870	4.462111
C	6.000389	1.785589	2.693540
H	6.354266	1.971558	1.670206
O	3.772081	1.967854	1.901171
O	4.708947	-0.100028	1.933649
O	7.578742	-0.470617	1.488814
H	8.360063	0.092449	1.615058
O	8.307278	1.303159	3.337928
H	8.380914	2.223693	3.664581
O	5.931472	3.056373	3.327201
H	5.526304	2.971879	4.201305
C	0.718793	1.701034	-0.069758
C	2.004904	2.041310	0.344618
C	-0.078705	0.851748	0.703149
H	-1.086938	0.562032	0.402870
H	2.648016	2.690779	-0.251199
H	0.333003	2.094847	-1.012489

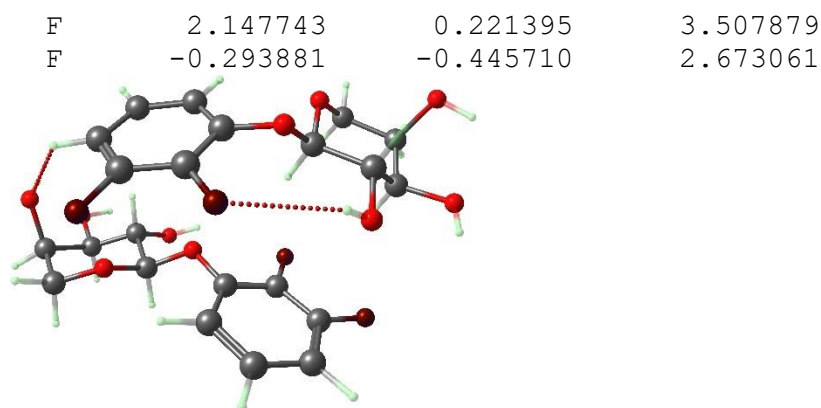


Fig. S31 DFT-optimized geometry of **3d- π** .

Table S28 DFT-optimized cartesian coordinates of **3d- π** .

C	11.011405	7.045358	2.951022
C	10.027662	6.122898	3.314074
C	9.478387	6.179918	4.599103
C	7.402029	5.044268	4.318843
H	7.025741	5.998516	3.888290
C	6.584374	3.752854	2.516449
H	6.953306	3.010377	1.795698
H	6.190996	4.624757	1.955854
C	5.453433	3.150578	3.346460
H	4.559776	3.070767	2.693489
C	5.113813	4.075105	4.521403
H	4.657259	5.006844	4.128521
C	6.378281	4.452198	5.279660
H	6.830295	3.533094	5.694226
O	8.552613	5.294648	5.076312
O	7.704593	4.133658	3.297088
O	5.833394	1.880398	3.825418
H	5.223526	1.682341	4.554818
O	4.209237	3.387897	5.360878
H	4.185452	3.866384	6.203195
O	6.015849	5.363489	6.292833
H	6.825198	5.608102	6.765322
C	10.923127	8.047293	5.132021
C	9.917308	7.156889	5.497793
C	11.467870	8.009118	3.853997
H	12.256967	8.717412	3.596446
H	9.700821	5.336180	2.636017
H	11.446539	6.998623	1.950484
F	9.403640	7.197118	6.739070
F	11.358532	8.930692	6.035333
C	8.943768	1.677495	6.172112
C	9.939478	2.352899	6.883051
C	10.935252	3.038450	6.183088
C	11.575540	4.740299	7.694103
H	10.618493	5.193086	7.366192
C	11.081958	5.188411	9.943626
H	11.048677	4.676581	10.915325
H	10.073955	5.594215	9.721416
C	12.073907	6.349164	10.016777
H	11.612623	7.146824	10.637017
C	12.331903	6.916118	8.616252
H	11.413109	7.403272	8.241116

C	12.692822	5.777168	7.671501
H	13.601528	5.275982	8.052546
O	11.943337	3.730370	6.795385
O	11.437191	4.203651	8.983654
O	13.280812	5.901323	10.585985
H	13.944621	6.568396	10.348209
O	13.387334	7.850405	8.720361
H	13.658350	8.071403	7.817265
O	12.891262	6.309624	6.381337
H	12.987558	5.564173	5.768730
C	9.934099	2.350547	4.092651
C	10.928163	3.038806	4.784136
C	8.935443	1.666370	4.775704
H	8.134737	1.191309	4.209380
H	9.971017	2.362409	7.972796
H	8.159422	1.145382	6.715455
F	11.852959	3.738354	4.112566
F	9.936204	2.397764	2.755835

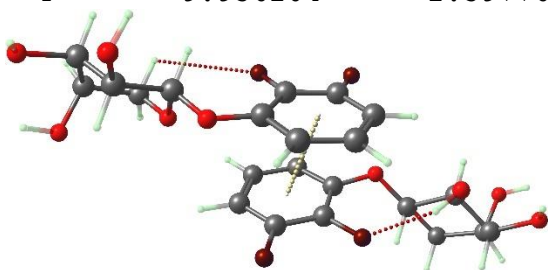


Fig. S32 DFT-optimized geometry of **3d'- π** .

Table S29 DFT-optimized cartesian coordinates of **3d'- π** .

C	7.889677	2.049193	1.828755
C	6.707315	1.794975	1.126380
C	5.696931	1.023022	1.716557
C	4.062264	1.237033	-0.050809
H	4.311849	2.319669	-0.078752
C	4.285480	1.092343	-2.398135
H	4.818084	0.493038	-3.149686
H	4.607961	2.148385	-2.497264
C	2.782201	0.990766	-2.636103
H	2.534939	1.564536	-3.554362
C	2.036405	1.615056	-1.452677
H	2.227718	2.711846	-1.456360
C	2.546654	1.052185	-0.122974
H	2.350422	-0.029923	-0.094907
O	4.520436	0.661727	1.132101
O	4.662625	0.577700	-1.134242
O	2.423982	-0.362998	-2.768180
H	1.461955	-0.394722	-2.643852
O	0.660562	1.348805	-1.606803
H	0.258152	1.449175	-0.729649
O	1.833048	1.619401	0.956817
H	2.092730	2.547591	1.052195
C	7.082042	0.810828	3.703336
C	5.901844	0.539028	3.017591
C	8.095727	1.573602	3.115233
H	9.052150	1.752404	3.606486
H	5.109061	-0.068443	3.455881
H	7.222453	0.412319	4.710393

F	6.607060	2.279610	-0.122328
F	8.839512	2.742539	1.197181
C	7.334952	-1.732647	0.954555
C	8.544610	-1.266309	1.465292
C	9.370199	-0.435830	0.699107
C	11.487038	-0.644687	1.798492
H	11.119461	-1.680060	1.962518
C	13.660025	-1.443206	1.355578
H	14.445290	-1.342976	0.593572
H	13.369864	-2.512420	1.423066
C	14.204491	-0.993144	2.709865
H	14.911020	-1.771976	3.068235
C	13.053418	-0.875176	3.714058
H	12.652119	-1.890554	3.922950
C	11.925248	-0.027352	3.125252
H	12.322156	0.973658	2.895420
O	10.478362	0.146048	1.235498
O	12.565007	-0.662826	0.905380
O	14.847889	0.250039	2.571827
H	14.912818	0.612119	3.470130
O	13.555439	-0.284648	4.892923
H	12.786537	0.043006	5.385279
O	10.885950	0.130684	4.074666
H	10.201554	-0.536346	3.916161
C	7.753056	-0.558893	-1.094056
C	8.967580	-0.090437	-0.593869
C	6.928130	-1.385188	-0.327059
H	5.954382	-1.717196	-0.685710
H	9.611850	0.577994	-1.165882
H	7.427272	-0.260249	-2.091494
F	8.883953	-1.582553	2.736198
F	6.558518	-2.482559	1.742610

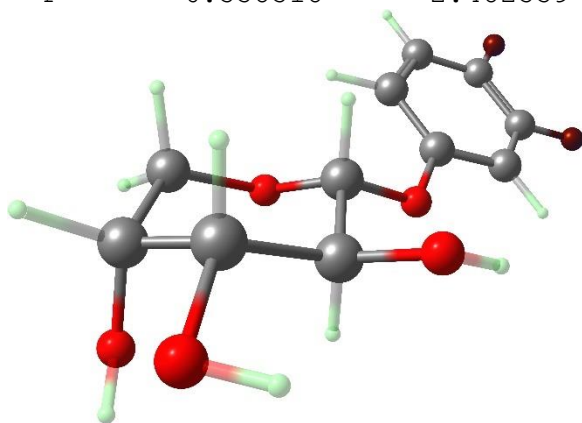


Fig. S33 DFT-optimized geometry of **3e**.

Table S30 DFT-optimized cartesian coordinates of **3e**.

C	8.849385	3.679106	6.347586
C	8.790410	3.356515	4.987493
C	7.754841	2.538165	4.520860
C	8.283417	2.856288	2.207173
H	8.189903	3.953455	2.373206
C	10.396302	3.086478	1.183417
H	11.412113	2.676519	1.266900
H	10.444933	4.183484	1.341595
C	9.850168	2.811863	-0.215776

H	10.385493	3.477628	-0.925461
C	8.356577	3.149186	-0.267607
H	8.224561	4.245230	-0.156416
C	7.629279	2.467692	0.883739
H	7.754799	1.374384	0.779322
O	7.600157	2.168100	3.212324
O	9.633054	2.472433	2.210756
O	10.050203	1.458015	-0.540812
H	9.459492	1.278154	-1.289648
O	7.855292	2.706891	-1.511145
H	6.889098	2.696621	-1.437179
O	6.275081	2.855081	0.813062
H	5.800358	2.393940	1.518536
C	6.879403	2.354510	6.759286
C	6.797006	2.033485	5.411660
C	7.901915	3.184087	7.233438
H	5.991706	1.390951	5.053816
H	9.567106	3.705930	4.310396
H	9.648532	4.311732	6.739437
F	5.975881	1.877504	7.618939
F	7.957426	3.479934	8.536583

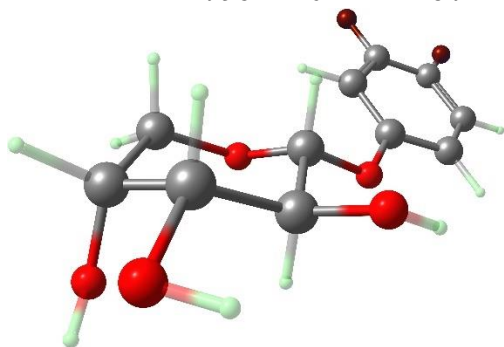


Fig. S34 DFT-optimized geometry of **3e'**.

Table S31 DFT-optimized cartesian coordinates of **3e'**.

C	8.857181	3.659638	6.329248
C	8.799849	3.330338	4.978466
C	7.746409	2.528234	4.520700
C	8.278893	2.848101	2.208460
H	8.176988	3.944323	2.376686
C	10.392048	3.100748	1.191098
H	11.410861	2.698523	1.274991
H	10.431314	4.197098	1.355437
C	9.850975	2.828505	-0.210759
H	10.380916	3.504319	-0.914870
C	8.353860	3.150267	-0.263537
H	8.210264	4.244386	-0.147293
C	7.632175	2.455493	0.883276
H	7.772746	1.364328	0.775454
O	7.598514	2.154908	3.212441
O	9.631558	2.475120	2.213959
O	10.065631	1.478859	-0.543275
H	9.476968	1.296302	-1.293034
O	7.859169	2.708315	-1.509842
H	6.892997	2.688122	-1.436739
O	6.272888	2.824493	0.810551
H	5.804988	2.357859	1.517006
C	6.860334	2.385726	6.768700

C	6.779550	2.054522	5.416213
C	7.896779	3.192408	7.228443
H	5.970770	1.427364	5.038284
H	9.598295	3.665212	4.319387
H	6.118136	2.028206	7.485339
F	9.854809	4.423760	6.781474
F	7.988692	3.521309	8.521650

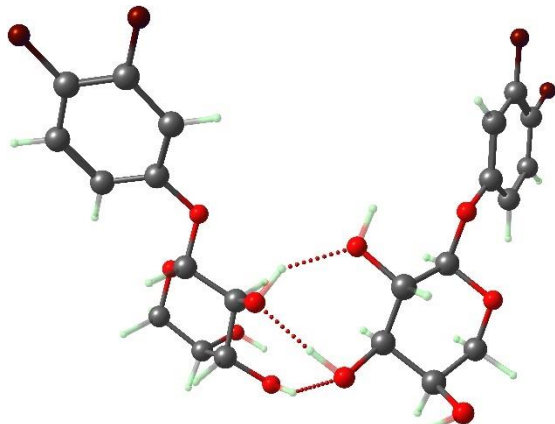


Fig. S35 DFT-optimized geometry of **3e-H**.

Table S32 DFT-optimized cartesian coordinates of **3e-H**.

C	10.686752	8.196200	4.424429
C	10.167617	7.779303	3.194304
C	10.706527	6.648192	2.571106
C	8.990381	6.513824	0.908684
H	8.255398	6.445693	1.743120
C	7.758683	8.237387	-0.086906
H	7.901741	9.248767	-0.490554
H	7.026734	8.286168	0.745037
C	7.218479	7.326213	-1.181883
H	6.160283	7.606918	-1.368261
C	7.240993	5.854125	-0.739741
H	6.493459	5.700262	0.063594
C	8.620068	5.503982	-0.180869
H	9.367271	5.598667	-0.988061
O	10.256740	6.150752	1.373225
O	9.024302	7.812581	0.394819
O	8.001852	7.489012	-2.337322
H	7.782113	6.741296	-2.915512
O	6.897406	5.095123	-1.885726
H	6.993311	4.131262	-1.674430
O	8.610947	4.192776	0.368592
H	9.462307	4.066256	0.814327
C	12.280298	6.388900	4.376370
C	11.771044	5.952994	3.160478
C	11.735432	7.507233	5.018071
H	12.200999	5.076073	2.674718
H	9.380192	8.354115	2.711443
H	10.287909	9.076414	4.932734
F	13.292745	5.738391	4.952434
F	12.238294	7.901468	6.191813
C	6.819013	-3.025780	1.127315
C	6.299368	-1.732830	1.004781
C	7.156250	-0.632840	1.133701
C	5.614983	0.962311	0.260723

H	5.612355	0.340496	-0.662793
C	3.266269	1.014600	0.329712
H	2.441897	0.795062	1.022082
H	3.157191	0.368307	-0.565667
C	3.197375	2.475142	-0.095567
H	2.320540	2.597087	-0.765894
C	4.453094	2.880222	-0.882182
H	4.449231	2.364271	-1.864149
C	5.709273	2.440142	-0.125461
H	5.775900	3.019205	0.810452
O	6.745836	0.666665	1.021821
O	4.464537	0.707213	1.021015
O	3.077164	3.282472	1.050741
H	3.282189	4.183545	0.754392
O	4.374758	4.280710	-1.040277
H	5.138367	4.616094	-1.549878
O	6.855752	2.640179	-0.939162
H	7.616259	2.838916	-0.357229
C	9.013330	-2.115083	1.532782
C	8.518267	-0.825238	1.401956
C	8.168659	-3.221513	1.389382
H	9.188734	0.028731	1.502317
H	5.232924	-1.579064	0.849500
H	6.173874	-3.901870	1.034075
F	10.309567	-2.313195	1.785057
F	8.674033	-4.453674	1.514386

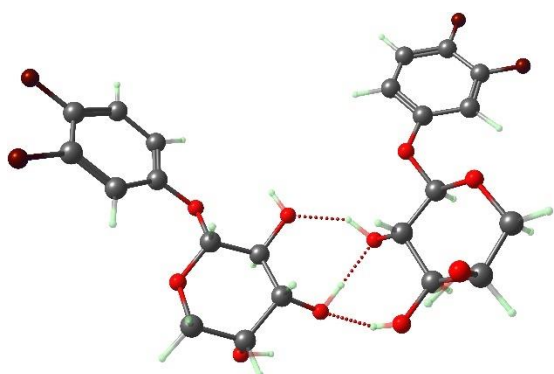


Fig. S36 DFT-optimized geometry of **3e'-H**.

Table S33 DFT-optimized cartesian coordinates of **3e'-H**.

C	7.311303	4.616971	8.530706
C	6.997819	5.409607	7.430362
C	7.921754	5.510700	6.381913
C	6.425084	6.705881	4.948783
H	5.690589	5.879712	5.084044
C	4.835765	8.344225	5.502958
H	4.701358	9.177538	6.206104
H	4.033624	7.598581	5.681589
C	4.733037	8.861722	4.074641
H	3.673921	9.135037	3.882937
C	5.129201	7.774219	3.063351
H	4.350053	6.984479	3.055160
C	6.449877	7.120643	3.476574
H	7.258325	7.862670	3.362607
O	7.709060	6.253508	5.255694
O	6.107089	7.784062	5.783167

O	5.580625	9.974586	3.927665
H	5.673579	10.100583	2.969651
O	5.213695	8.425622	1.813836
H	5.521577	7.815441	1.115599
O	6.679767	5.973217	2.672518
H	7.644179	5.813019	2.623022
C	9.448449	4.055922	7.571652
C	9.147234	4.836063	6.455842
C	8.529932	3.940397	8.610670
H	9.852649	4.935034	5.629584
H	6.062445	5.965754	7.434119
H	10.397498	3.521843	7.651435
F	6.439928	4.510085	9.537566
F	8.803598	3.195153	9.687601
C	14.495945	8.173731	-0.207476
C	13.147880	7.851034	-0.335618
C	12.702812	6.610549	0.137568
C	10.375796	7.136073	-0.127870
H	10.532390	8.006304	0.549596
C	9.315326	8.478953	-1.728325
H	9.376915	8.715054	-2.799078
H	9.469258	9.412176	-1.149351
C	7.937155	7.910549	-1.411560
H	7.202193	8.740216	-1.479881
C	7.885842	7.352770	0.019797
H	7.954275	8.190445	0.742295
C	9.075573	6.420970	0.247794
H	8.974136	5.551208	-0.424179
O	11.396328	6.201011	0.064543
O	10.357654	7.553061	-1.460742
O	7.643552	6.889201	-2.331455
H	6.885830	6.407908	-1.963051
O	6.641673	6.687299	0.143544
H	6.605660	6.243051	1.029268
O	9.135661	6.021066	1.610966
H	9.951993	5.510715	1.721760
C	14.952252	6.042773	0.821869
C	13.603674	5.705190	0.710430
C	15.400975	7.279390	0.368652
H	13.234540	4.740825	1.062839
H	12.482988	8.550084	-0.839375
H	15.674613	5.354842	1.265748
F	14.939524	9.350578	-0.654603
F	16.689058	7.620062	0.473622

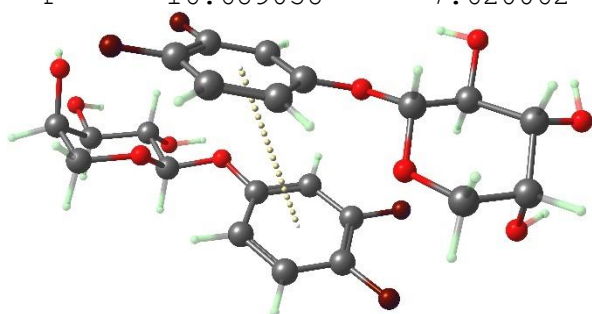


Fig. S37 DFT-optimized geometry of **3e-π**.

Table S34 DFT-optimized cartesian coordinates of **3e-π**.

C	9.626825	4.540707	3.378797
---	----------	----------	----------

C	8.915565	4.984326	2.258419
C	7.549024	4.705027	2.164624
C	7.198979	6.013731	0.180537
H	7.577605	6.916466	0.711114
C	8.677951	6.308059	-1.647145
H	9.417854	5.725676	-2.211124
H	9.174226	7.200402	-1.214370
C	7.565376	6.760518	-2.589122
H	7.975975	7.565674	-3.235340
C	6.402088	7.340185	-1.778016
H	6.728774	8.283735	-1.293514
C	5.992131	6.364043	-0.685046
H	5.666993	5.421867	-1.160122
O	6.755566	5.070448	1.108467
O	8.214401	5.453906	-0.611678
O	7.128513	5.666771	-3.353956
H	6.256647	5.914311	-3.699945
O	5.327169	7.576656	-2.662568
H	4.535660	7.690070	-2.114969
O	4.953319	6.971321	0.053377
H	4.660296	6.335192	0.720483
C	7.628956	3.542278	4.271857
C	6.903781	3.985522	3.178159
C	8.993300	3.821545	4.381288
H	5.842154	3.750993	3.100071
H	9.433287	5.497779	1.451442
H	10.697455	4.733410	3.473537
F	7.023648	2.823900	5.223136
F	9.681648	3.366093	5.433023
C	9.512263	2.131278	-0.592462
C	9.175353	1.552354	0.635829
C	7.829914	1.479000	1.007871
C	8.227952	0.171098	2.982572
H	8.708363	-0.615942	2.358335
C	10.067409	0.297626	4.469708
H	10.733515	1.059748	4.894073
H	10.675775	-0.448213	3.918551
C	9.316246	-0.403375	5.598238
H	10.037276	-1.063842	6.125853
C	8.199717	-1.276172	5.016051
H	8.650412	-2.115924	4.447299
C	7.346527	-0.459133	4.056986
H	6.890708	0.376737	4.616432
O	7.384104	0.952600	2.192021
O	9.206008	0.985605	3.574823
O	8.777395	0.559626	6.467165
H	8.083489	0.105906	6.970944
O	7.419749	-1.758985	6.089649
H	6.590982	-2.085387	5.707932
O	6.372795	-1.326287	3.515258
H	5.804702	-0.799755	2.935925
C	7.190584	2.570420	-1.041150
C	6.834493	1.986211	0.163341
C	8.530622	2.639646	-1.429879
H	5.786062	1.948423	0.459216
H	9.956239	1.211127	1.311538

H	10.555726	2.215713	-0.902990
F	6.246015	3.094109	-1.829514
F	8.857383	3.226166	-2.585809

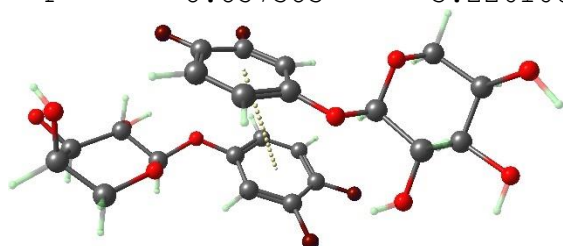


Fig. S38 DFT-optimized geometry of $3e'-\pi$.

Table S35 DFT-optimized cartesian coordinates of $3e'-\pi$.

C	6.518750	5.183416	3.510897
C	7.628661	4.535937	4.040973
C	8.254073	3.540857	3.281770
C	9.938437	3.150276	4.934837
H	10.071436	4.244859	5.076291
C	9.562022	2.828653	7.238254
H	8.833912	2.349076	7.906850
H	9.602011	3.911223	7.479250
C	10.943592	2.220118	7.468653
H	11.318675	2.587874	8.447418
C	11.907162	2.686644	6.374108
H	12.090920	3.775309	6.479404
C	11.295416	2.456282	4.997005
H	11.104580	1.374620	4.868076
O	9.393712	2.891607	3.676113
O	9.082970	2.632877	5.918333
O	10.846769	0.816324	7.458620
H	11.751226	0.494294	7.315243
O	13.108938	1.958816	6.516505
H	13.608059	2.085117	5.695195
O	12.220158	2.950071	4.058385
H	11.854855	2.859180	3.167853
C	6.607539	3.821564	1.526461
C	7.736413	3.178930	2.032063
C	5.999841	4.823917	2.270363
H	8.243829	2.401443	1.459459
H	7.977562	4.831641	5.027207
H	6.206781	3.594758	0.537170
F	5.946700	6.183726	4.195698
F	4.934514	5.489650	1.785857
C	11.207678	5.618787	2.316300
C	10.133183	5.873789	1.473769
C	9.120977	6.737877	1.905500
C	7.914389	6.808711	-0.193757
H	8.692687	7.425917	-0.697249
C	7.919332	5.144451	-1.881292
H	8.084650	4.062422	-1.978398
H	8.673358	5.672043	-2.499741
C	6.524226	5.504291	-2.375032
H	6.497866	5.365543	-3.475695
C	6.240330	6.975624	-2.062289
H	6.915459	7.611668	-2.671677
C	6.509402	7.260099	-0.591578
H	5.812412	6.654590	0.010491

O	7.985087	6.993633	1.190476
O	8.096511	5.450396	-0.508631
O	5.579996	4.673746	-1.739235
H	4.723317	5.121941	-1.828531
O	4.887638	7.230451	-2.374319
H	4.653007	8.065892	-1.942371
O	6.306480	8.641534	-0.385506
H	6.336081	8.801871	0.567889
C	10.287134	7.071000	3.998096
C	9.202408	7.342054	3.165905
C	11.295062	6.206631	3.578288
H	8.391167	7.993733	3.492677
H	10.069567	5.354852	0.521384
H	10.368146	7.524418	4.988218
F	12.159822	4.766133	1.910934
F	12.327638	5.928112	4.381122

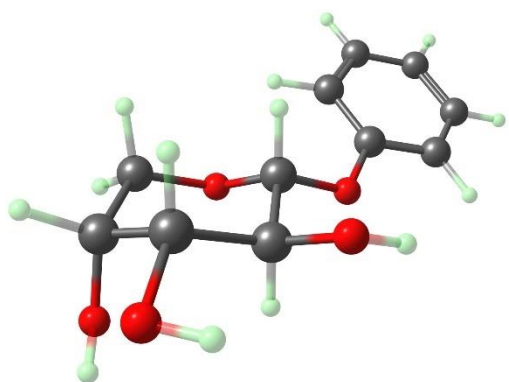


Fig. S39 DFT-optimized geometry of **1**.

Table S36 DFT-optimized cartesian coordinates of **1**.

C	8.82286064363239	3.69516407043760	6.34664324945710
H	9.62704433241044	4.34322674156055	6.70505723919857
C	8.78270842926563	3.34980211761223	4.99197876915165
H	9.56229891955277	3.69119037285011	4.31261799080474
C	7.75533741421816	2.51808739198682	4.52962160788761
C	8.29280746440836	2.82336465100850	2.21554963277092
H	8.19747359285814	3.92014317113167	2.38367247101691
C	10.39576743000992	3.07914598041685	1.18249795852992
H	11.41608220398323	2.67780355072104	1.25343068964738
H	10.43594233492818	4.17480248798697	1.35357608767179
C	9.84337133098491	2.81833787377403	-0.21753567534855
H	10.36641256719795	3.50080878752391	-0.92064826547952
C	8.34532658192521	3.13786944173895	-0.25542563147957
H	8.20032190376878	4.23091487382743	-0.13172020987526
C	7.63527986695681	2.43617081115922	0.89376762635598
H	7.77630321803796	1.34547160504096	0.77982336128531
O	7.61802843230288	2.13185194191058	3.22044523766617
O	9.64539367430726	2.44644918616580	2.20635748756197
O	10.05695235761311	1.47193345363568	-0.56509454866551
H	9.45582308377729	1.29533162089945	-1.30643870819110
O	7.84019436384976	2.70297266134293	-1.50080210086180
H	6.87534223240975	2.67155951112072	-1.41579374180012
O	6.27469447335175	2.80264728095606	0.83586184240162
H	5.82116477004144	2.34867146835587	1.56005023978867
C	6.85303310227553	2.36807003992265	6.76894817001329
H	6.09880727092988	1.97766170952007	7.45725090977345

C	6.79387226451746	2.02264267397620	5.41978653763591
C	7.86484451157389	3.21227122581203	7.24016332452094
H	7.90871310901522	3.48469210933719	8.29718096804282
H	6.00877437989580	1.36978167826786	5.03260485051868

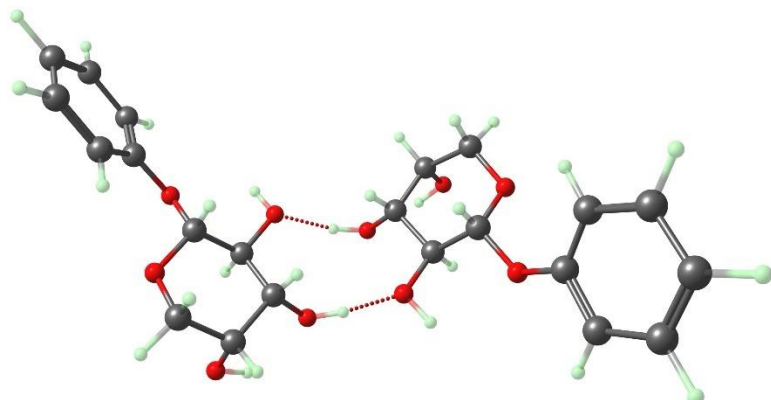


Fig. S40 DFT-optimized geometry of **1-H**.

Table S37 DFT-optimized cartesian coordinates of **1-H**.

C	7.75033507230870	-6.91934606985017	-6.98908287998348
H	7.48492942015779	-5.87679781612991	-7.18350150898734
C	6.98537649992919	-7.65648845521636	-6.07912277492695
H	6.11563902434091	-7.21057729205914	-5.59850249360033
C	7.32266972810762	-8.99227211636235	-5.83027173567059
C	5.84392710954291	-9.22184419375734	-3.95724735801833
H	6.37313256094630	-8.35222346971174	-3.50389492511904
C	3.76271494176555	-8.22612158536689	-3.54607180945431
H	2.83440233325952	-7.97032040074606	-4.07522719907855
H	4.21091773739795	-7.29224109251053	-3.14735919311970
C	3.44802779753121	-9.16192187251279	-2.38404697588711
H	2.94946295073407	-8.56132229611005	-1.59251174290746
C	4.73002509468870	-9.76793206041022	-1.77984344022177
H	5.28360608260714	-8.98381805312465	-1.23086797162766
C	5.62272306787424	-10.29813288554426	-2.89713239096898
H	5.10565888266927	-11.14184764852549	-3.38609823726142
O	6.64641326222528	-9.79516536349854	-4.94547532788203
O	4.62439368089036	-8.81302805305014	-4.50845368476445
O	2.61326127862682	-10.19994139060627	-2.83399224436125
H	2.66374192881759	-10.88339041669301	-2.14482953682694
O	4.36507501817269	-10.81859546484218	-0.91732093061856
H	4.71114160366230	-10.62233649514408	-0.02316849204754
O	6.86932792322490	-10.70222774124318	-2.34994849184481
H	7.42585568556643	-10.99569201952388	-3.08687222096977
C	9.14483279920635	-8.84259191375031	-7.41314410746114
H	9.98323318167415	-9.31285768855911	-7.93358302099058
C	8.39798404658978	-9.58773732317078	-6.50205700106017
C	8.82914793544632	-7.50122793485467	-7.65752236220955
H	9.41641048073441	-6.91725737001579	-8.36989213912376
C	7.59453926585635	-5.59143110837420	5.14272016600410
H	8.48946489039291	-4.96356295591656	5.14120343696702
C	7.61178504055504	-6.80030511228741	4.43910174896252
H	8.51552371288347	-7.12972054965544	3.92828348677384
C	6.46683820399241	-7.60603360360088	4.44055508486151
C	7.28226246154600	-9.09668987221754	2.74934759477718
H	7.43485036454389	-8.19749483674235	2.10935599689884
C	9.46280838991399	-9.83632616782107	2.31066510780241
H	10.35794574253707	-10.17771904853301	2.84860001712127

H	9.72783066519403	-8.93291586678801	1.72280203128281
C	8.99130929107550	-10.92943020600678	1.35763873261233
H	9.70597460946932	-10.96600008978571	0.50687651735403
C	7.59322688464176	-10.62154516945232	0.78731356076660
H	7.66310706627327	-9.78046163743402	0.07345283114741
C	6.65610226537367	-10.21478914122873	1.91962957515731
H	6.51470059113038	-11.08285363754613	2.58629681069786
O	6.37485773320816	-8.79873659298251	3.76729544227736
O	8.49943123725497	-9.51213373757682	3.30072190264243
O	8.95162311213061	-12.15876972348932	2.03914434812686
H	8.41005187976269	-12.74200209730058	1.48141393172562
O	7.10171121342485	-11.77623415529848	0.14968552720184
H	6.92984684867844	-11.56129577689886	-0.78943152039278
O	5.42222553398885	-9.77696442163429	1.37020968252722
H	4.86165589602052	-9.49251761373143	2.10743098238755
C	5.33050489461410	-6.01424359990453	5.86306859104483
H	4.43893288084673	-5.71578483624412	6.42071861280079
C	5.32860965010930	-7.21716784430638	5.15865699659562
C	6.46184238448704	-5.19037517598589	5.85366798013881
H	6.46129959411908	-4.24631682770750	6.40332962252808
H	8.63169937005386	-10.63446955960898	-6.29542990422227
H	4.45387588722302	-7.87114792104976	5.15051781242464

Table S38 Enthalpy and Gibbs free energy of **3a-e** and their H-bonded and π - π stacked assemblies.

		Enthalpy (H) in a.u.	Gibbs free energy (G) in a.u.
<i>ortho-</i>	3a	-901.58653993	-901.64305816
	3a'	-901.57927334	-901.63565126
	3a-H	-1803.20091045	-1803.29136008
	3a'-H	-1803.19036891	1803.28096781
	3a-π	-1803.19186609	-1803.28275213
	3a'-π	-1803.17835901	-1803.26717376
<i>meta-</i>	3b	-901.58452214	-901.64096528
	3b'	-901.58480227	-901.64123325
	3b-H	-1803.19934994	-1803.28705385
	3b'-H	-1803.19653424	-1803.28326435
	3b-π	-1803.19259370	-1803.28276822
	3b'-π	-1803.19370741	-1803.28349267
<i>para-</i>	3c	-901.58315667	-901.63961724
	3c-H	-1803.19578777	-1803.28604414
	3c-π	-1803.19356766	-1803.28273182
<i>ortho-meta</i>	3d	-1000.71519480	-1000.77363184
	3d'	-1000.70833470	-1000.76658582
	3d-H	-2001.45789663	-2001.55207092
	3d-H_a	-2001.45242476	-2001.54355446
	3d'-H	-2001.44182342	-2001.53583063
	3d-π	-2001.46124946	-2001.55412606
	3d'-π	-2001.44046567	-2001.53417341
<i>meta-para</i>	3e	-1000.71763640	-1000.77595401
	3e'	-1000.71784118	-1000.77613028
	3e-H	-2001.46551465	-2001.55849306
	3e'-H	-2001.46592756	-2001.55930662
	3e-π	-2001.46199979	-2001.55520075
	3e'-π	-2001.46304869	-2001.55423219
Without F	1	-802.45392068	-802.50832573
	1-H	-1604.93444588	-1605.02108363

Table S39 DFT-calculated chemical properties of **3a-e**.

Compound	HOMO (eV) (-I)	LUMO (eV) (-A)	Energy gap (eV)	Electronegativity [(I+A)/2] (eV)	Dipole moment (Debye)	Hardness (η) (eV) [(I- A)/2]	Softness ($S = 1/\eta$) (eV)
3a	-6.76	-0.55	6.21	3.65	2.46	3.10	0.32
3a'	-6.34	-0.28	6.06	3.31	2.26	3.03	0.33
3b	-6.46	-0.37	6.09	3.41	3.98	3.05	0.33
3b'	-6.40	-0.33	6.07	3.36	3.08	3.04	0.33
3c	-6.33	-0.54	5.79	3.43	3.46	2.89	0.34
3d	-6.79	-0.48	6.31	3.63	2.50	3.15	0.31
3d'	-6.54	-0.28	6.26	3.41	1.97	3.13	0.32
3e	-6.45	-0.65	5.80	3.55	2.79	2.90	0.34
3e'	-6.43	-0.63	5.80	3.54	2.88	2.90	0.34

5. NMR Spectra

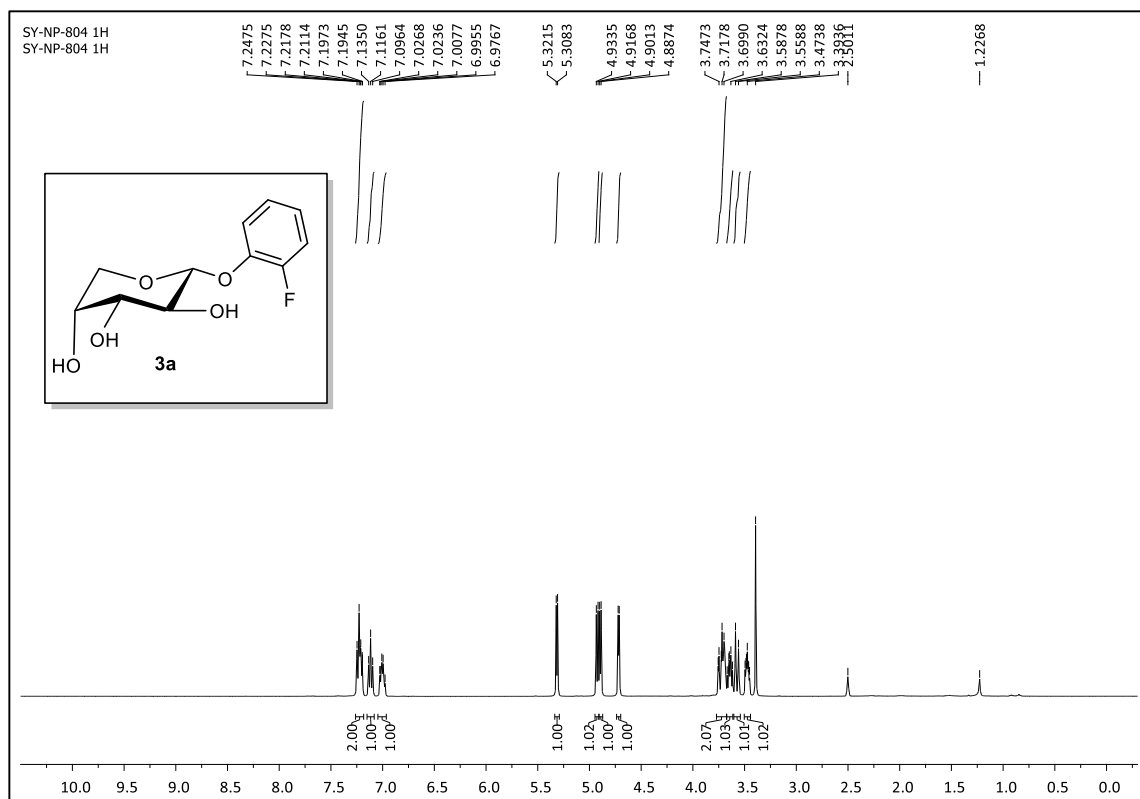


Fig. S41 $^1\text{H-NMR}$ (400 MHz, DMSO- d_6) spectrum of **3a**.

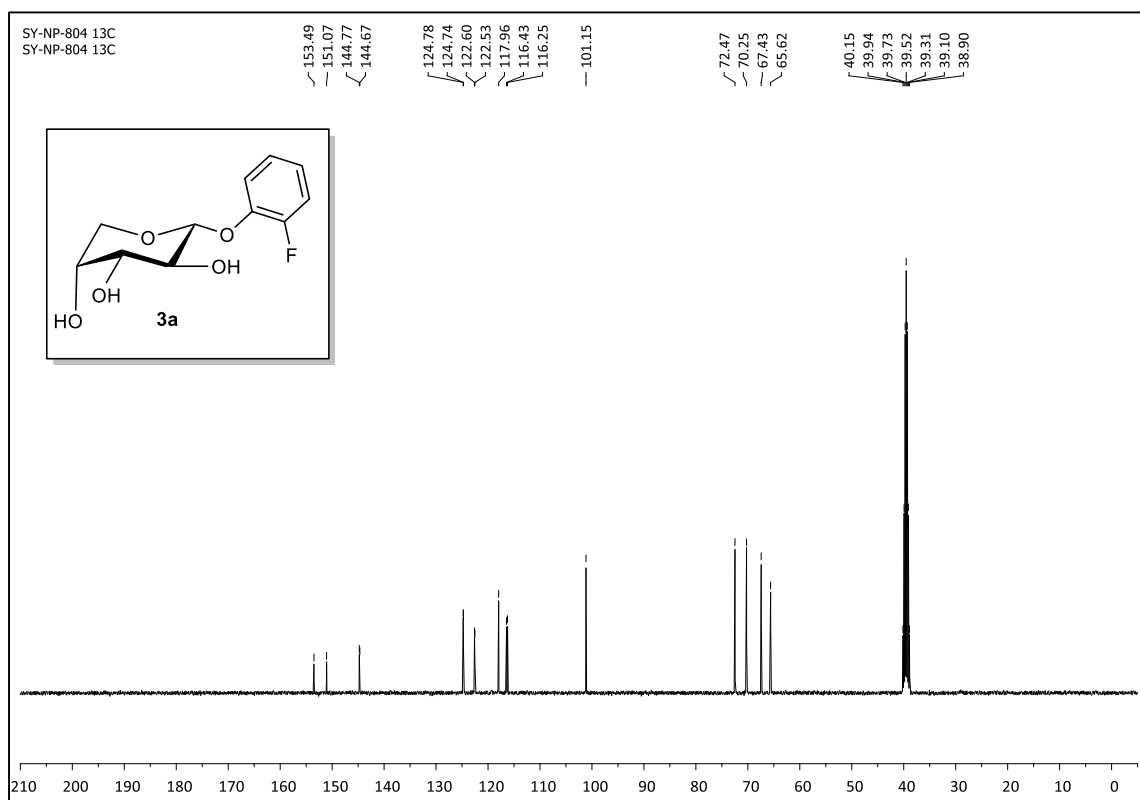


Fig. S42 $^{13}\text{C}\{^1\text{H}\}$ NMR (100 MHz, DMSO- d_6) spectrum of **3a**.

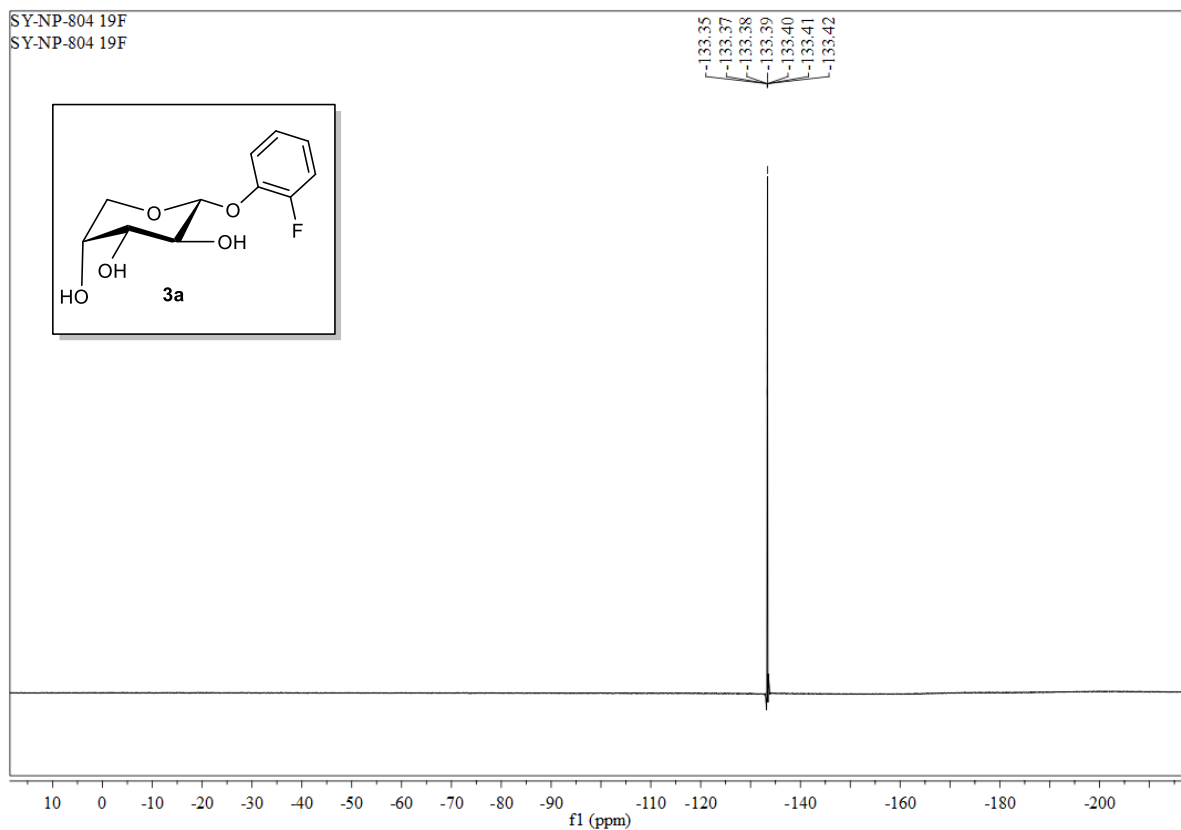


Fig. S43 ^{19}F NMR (377 MHz, DMSO-d₆) spectrum of **3a**

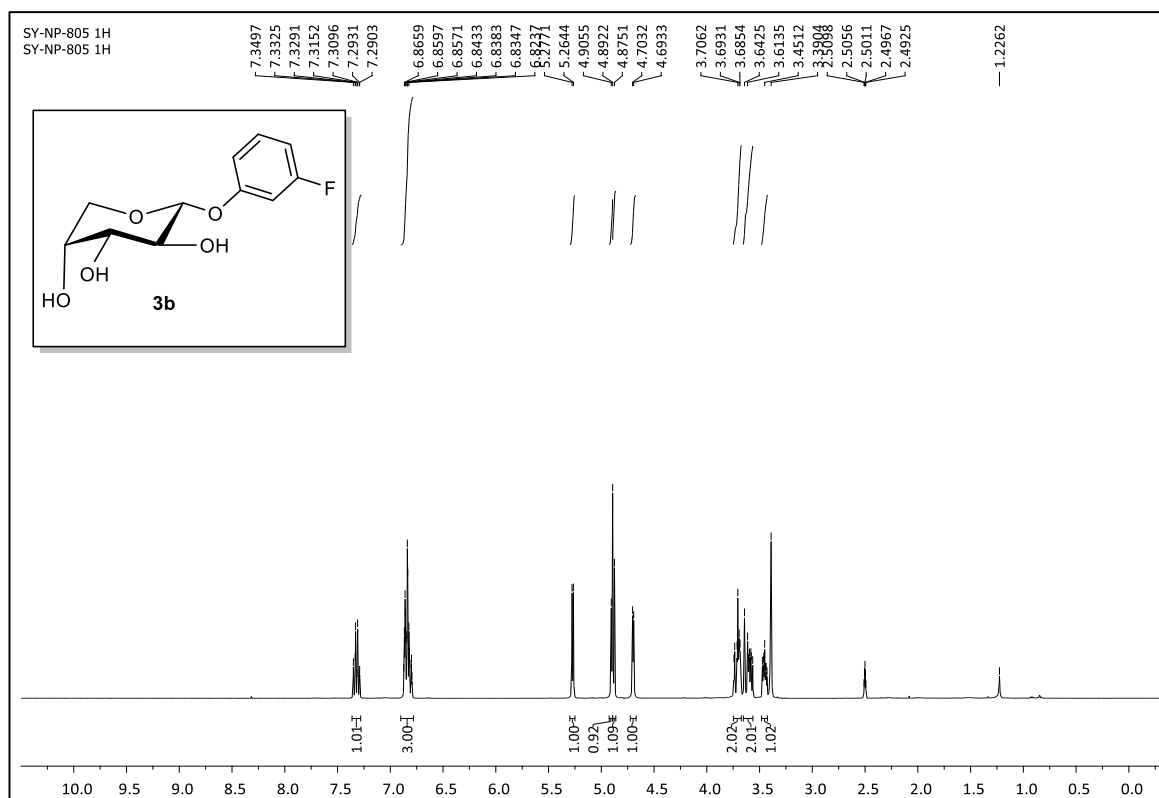


Fig. S44 ^1H -NMR (400 MHz, DMSO-d₆) spectrum of **3b**.

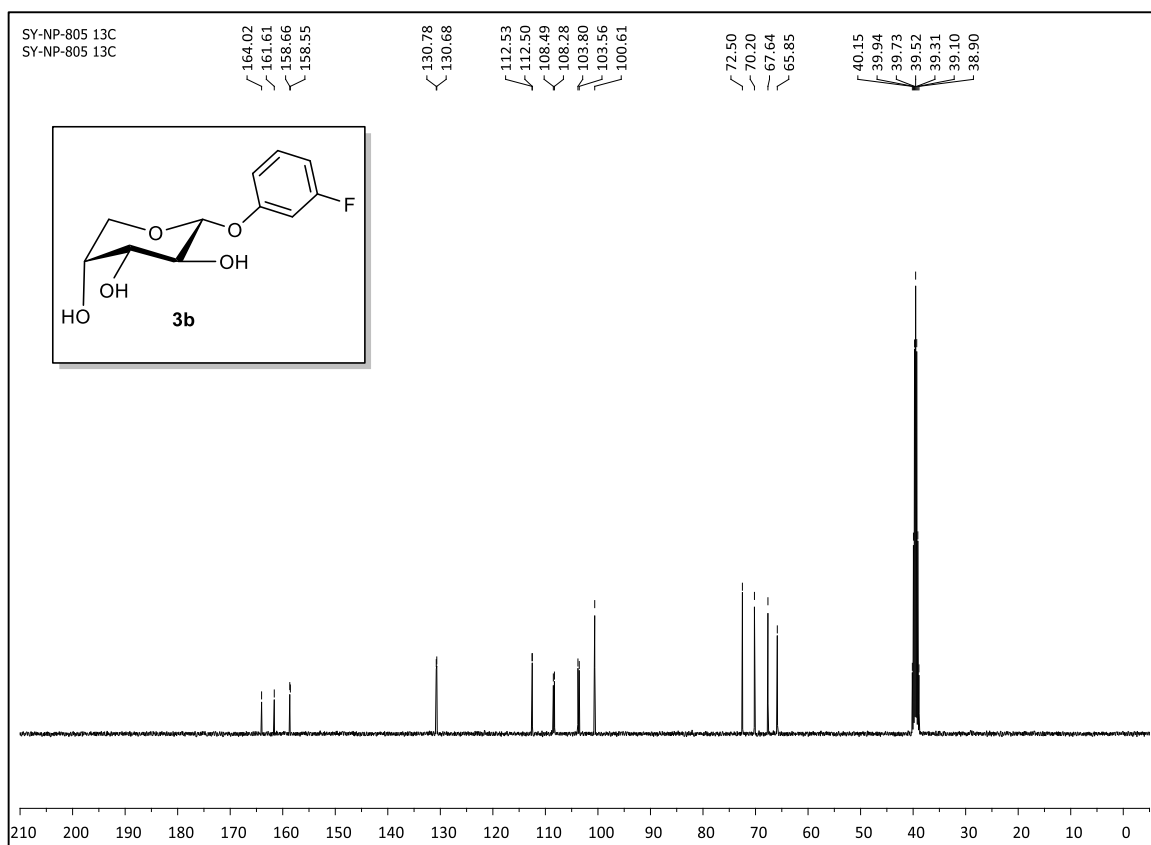


Fig. S45 $^{13}\text{C}\{^1\text{H}\}$ NMR (100 MHz, DMSO- d_6) spectrum of **3b**.

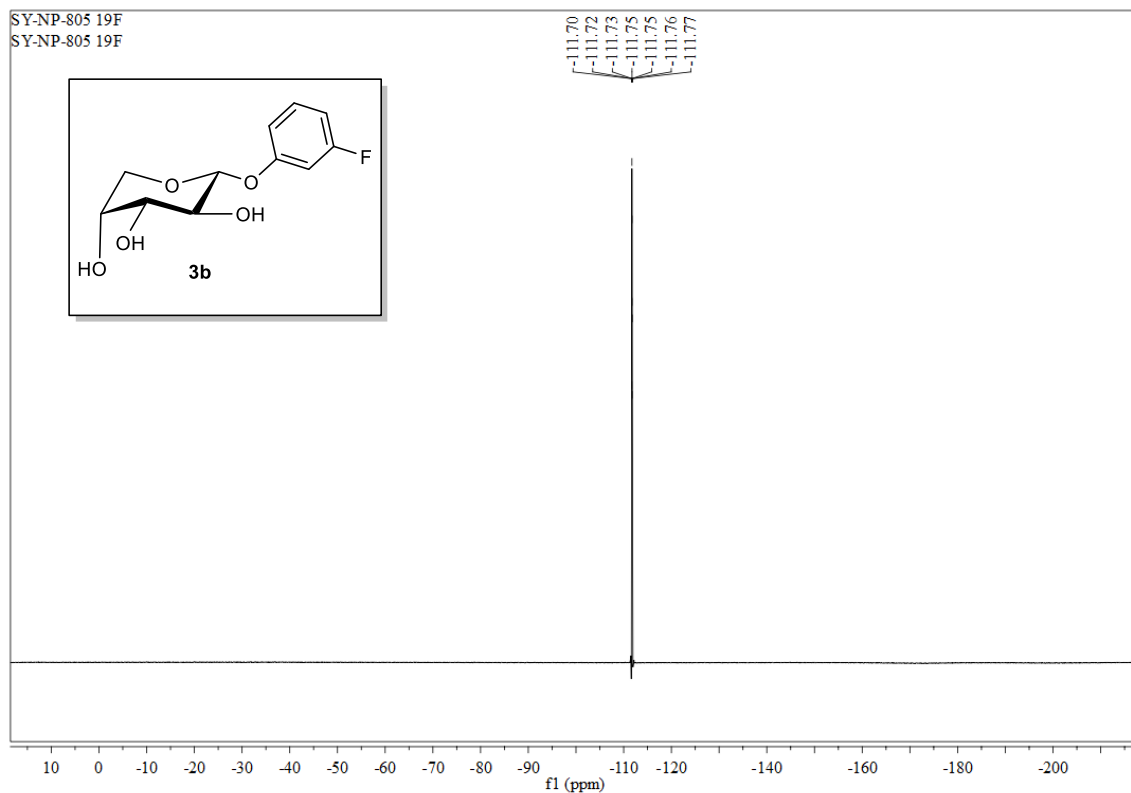


Fig. S46 ^{19}F NMR (377MHz, DMSO- d_6) spectrum of **3b**

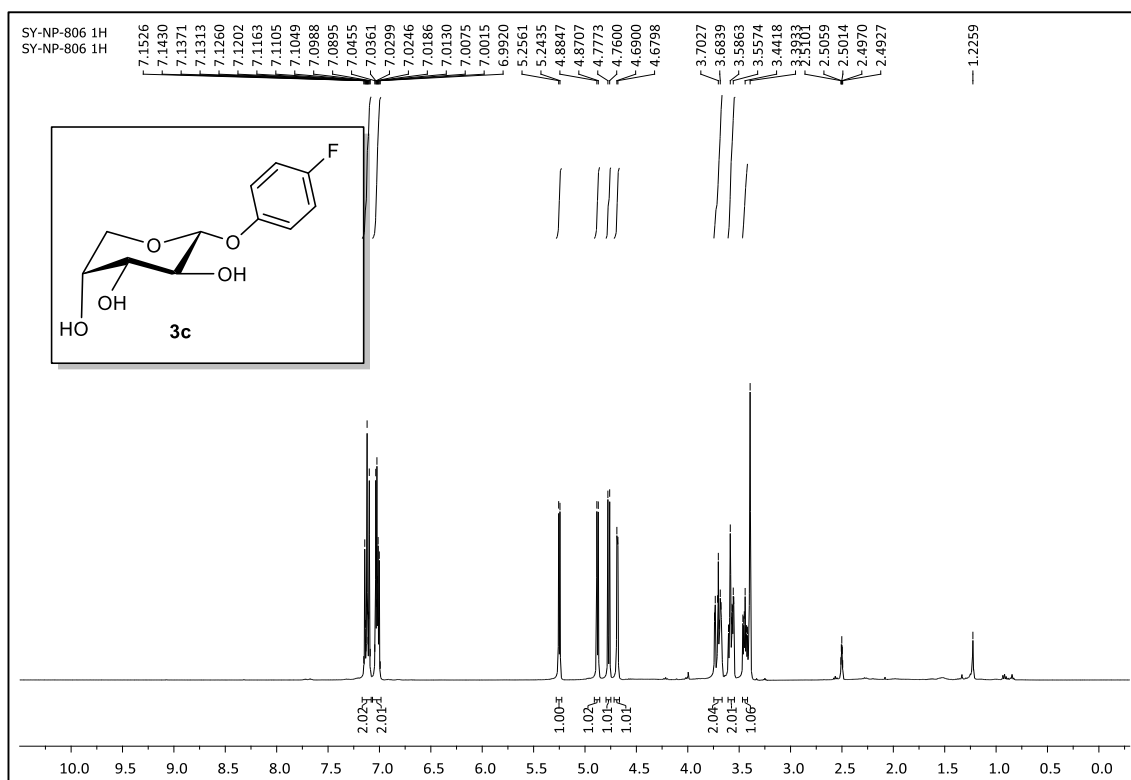


Fig. S47 $^1\text{H-NMR}$ (400 MHz, DMSO-d_6) spectrum of **3c**

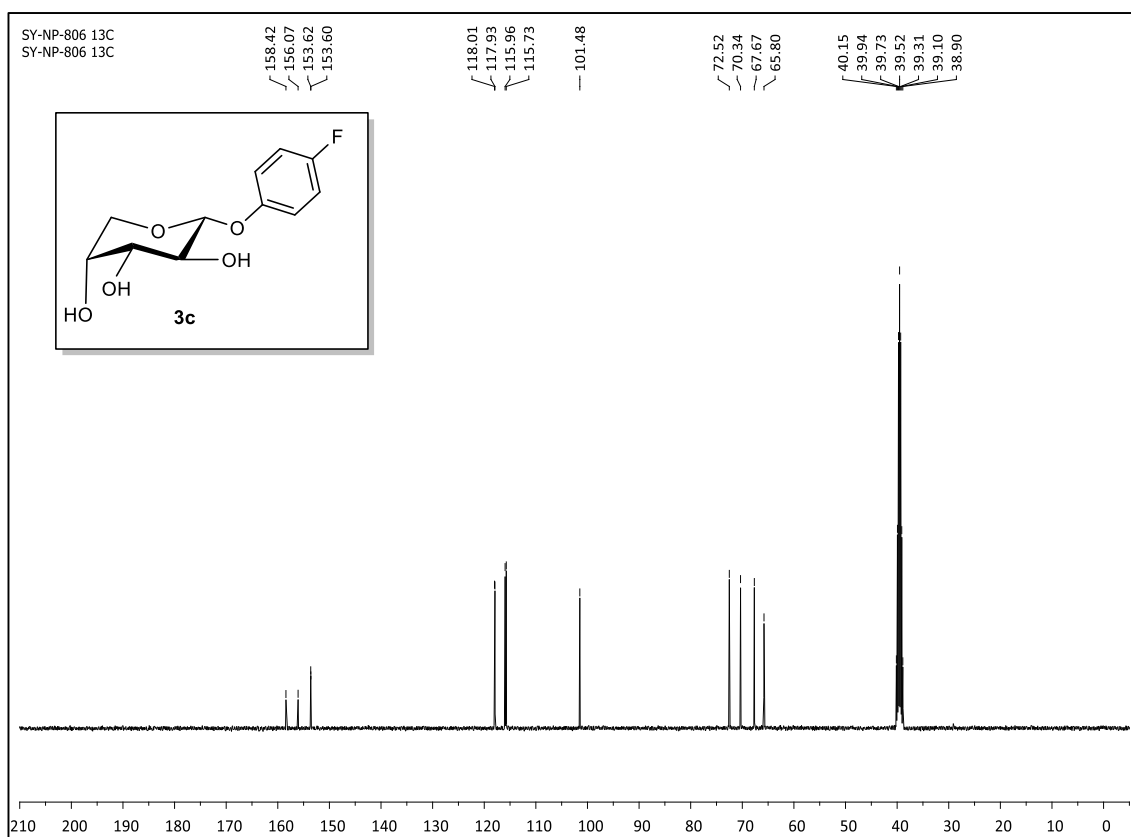


Fig. S48 $^{13}\text{C}\{^1\text{H}\}$ NMR (100 MHz, DMSO-d_6) spectrum of **3c**.

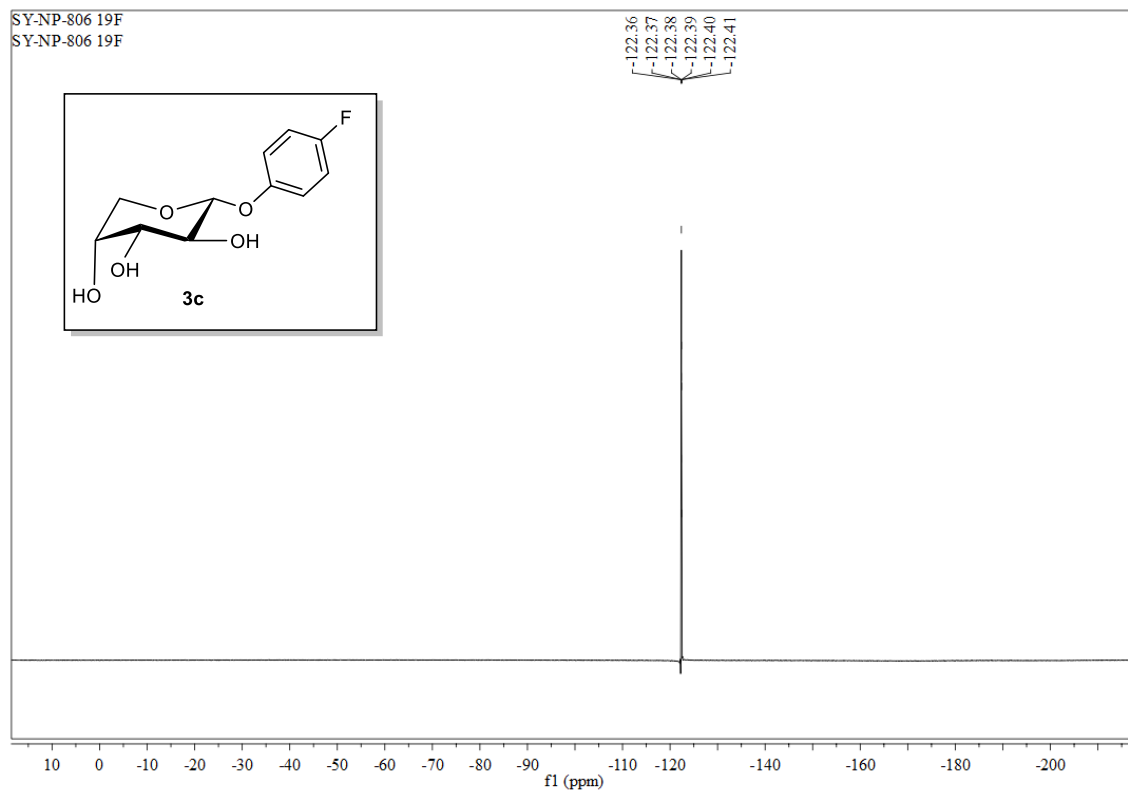


Fig. S49 ^{19}F NMR (377 MHz, DMSO- d_6) spectrum of **3c**

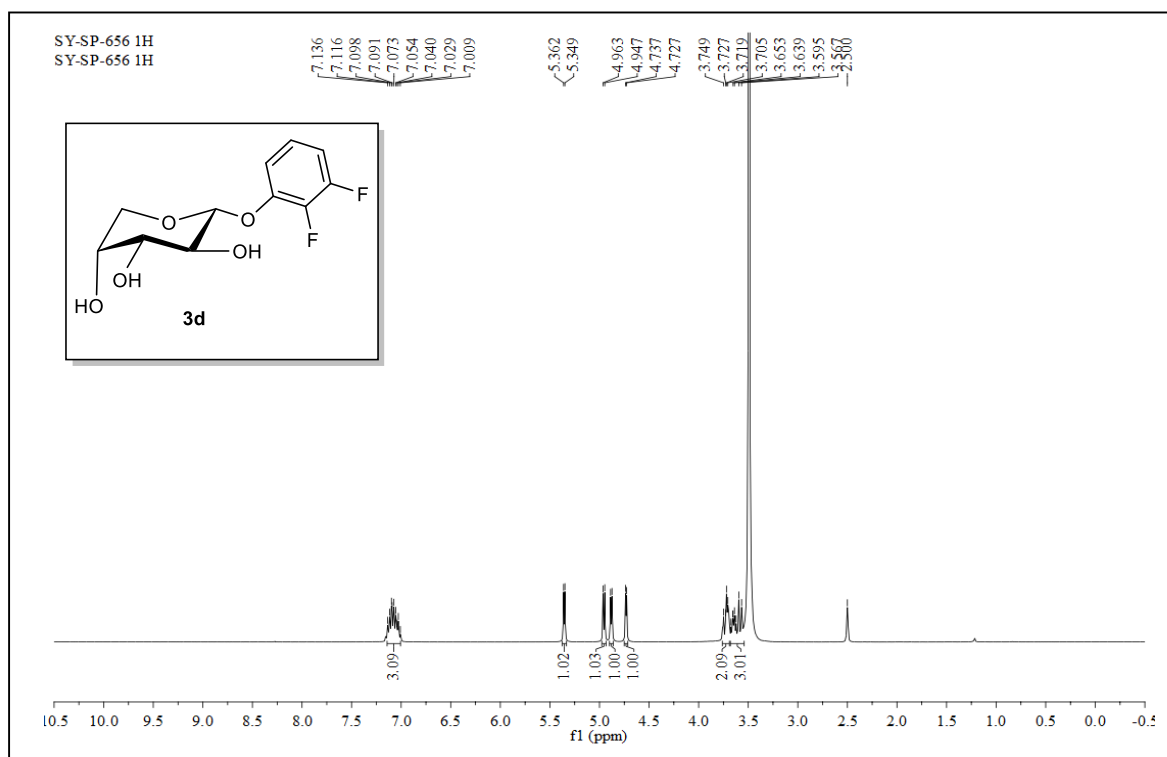


Fig. S50 ^1H -NMR (400 MHz, DMSO- d_6) spectrum of **3d**

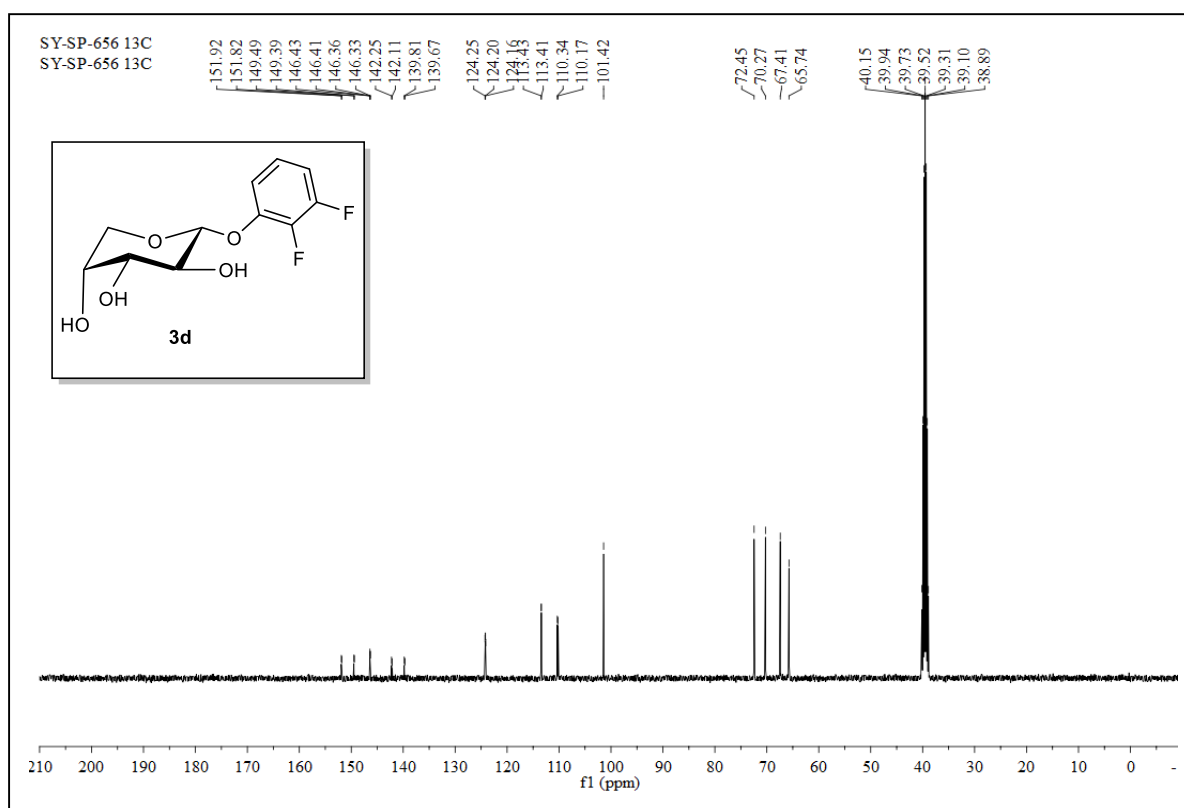


Fig. S51 $^{13}\text{C}\{^1\text{H}\}$ NMR (100 MHz, DMSO- d_6) spectrum of **3d**

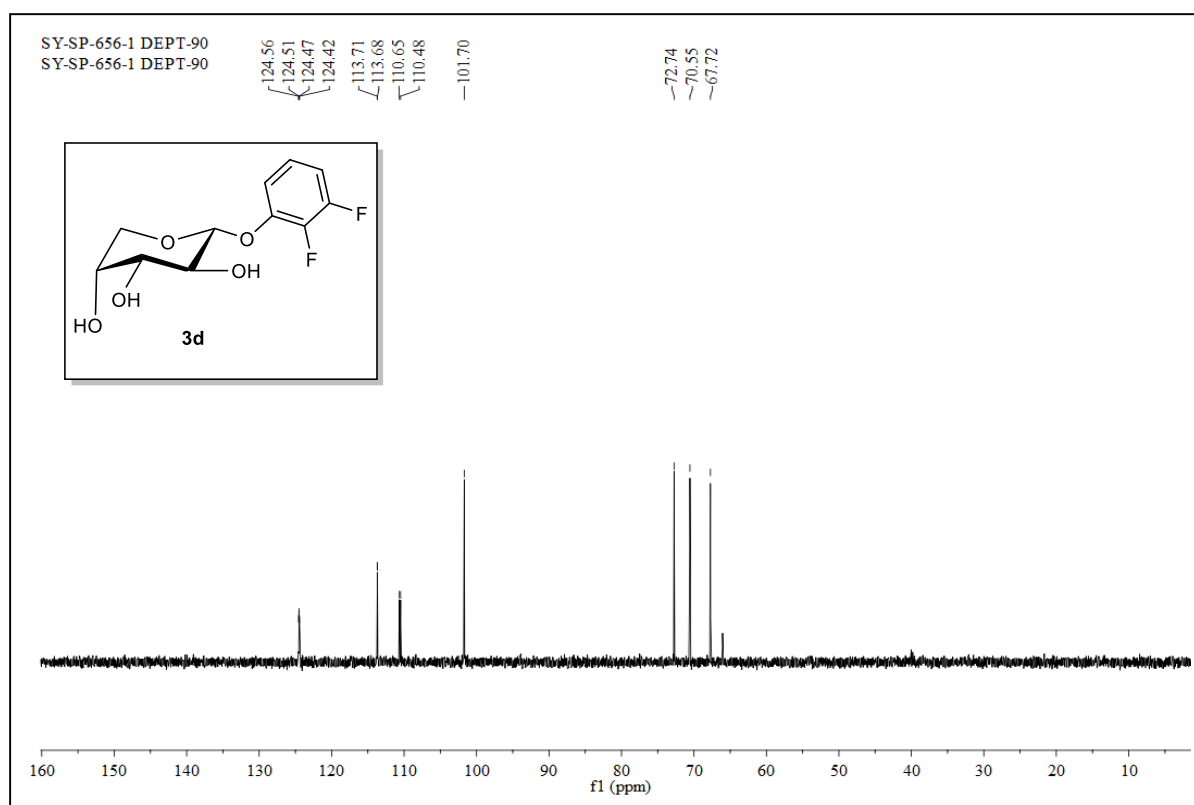


Fig. S52 DEPT 90 NMR (100 MHz, DMSO- d_6) spectrum of **3d**

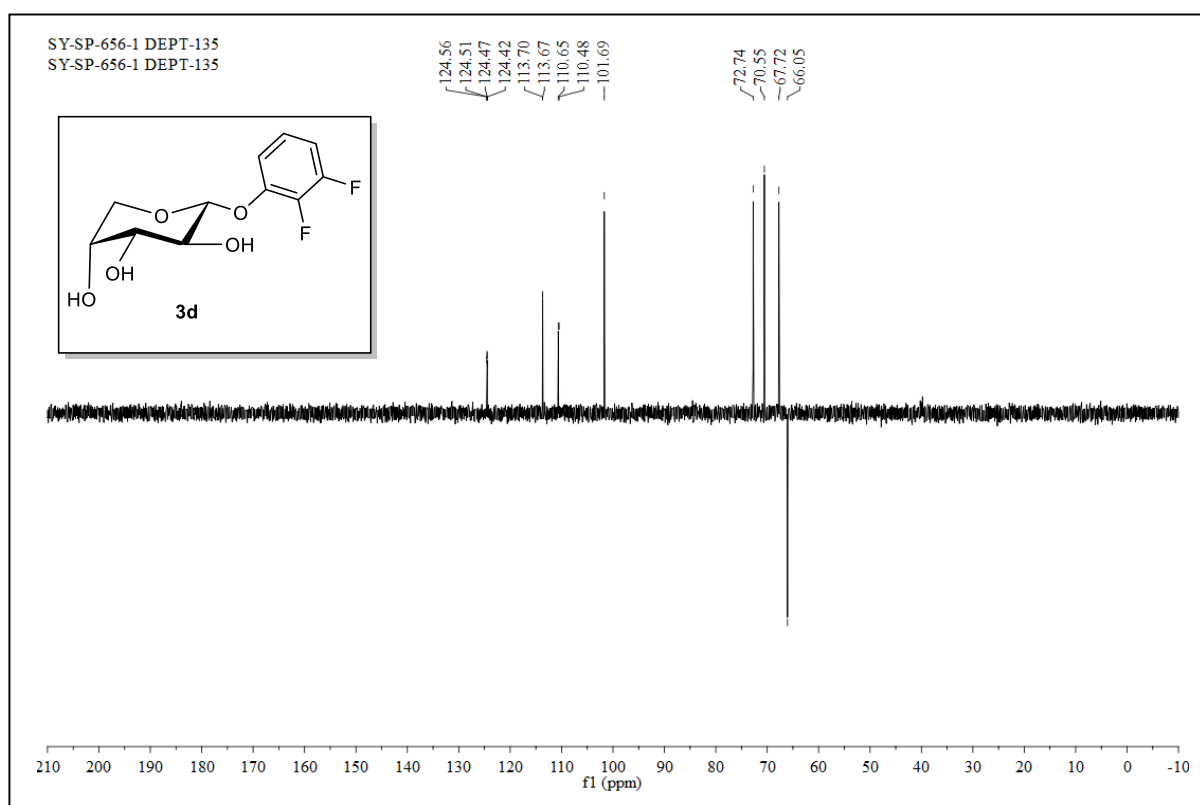


Fig. S53 DEPT 135 NMR (100 MHz, DMSO-d₆) spectrum of **3d**

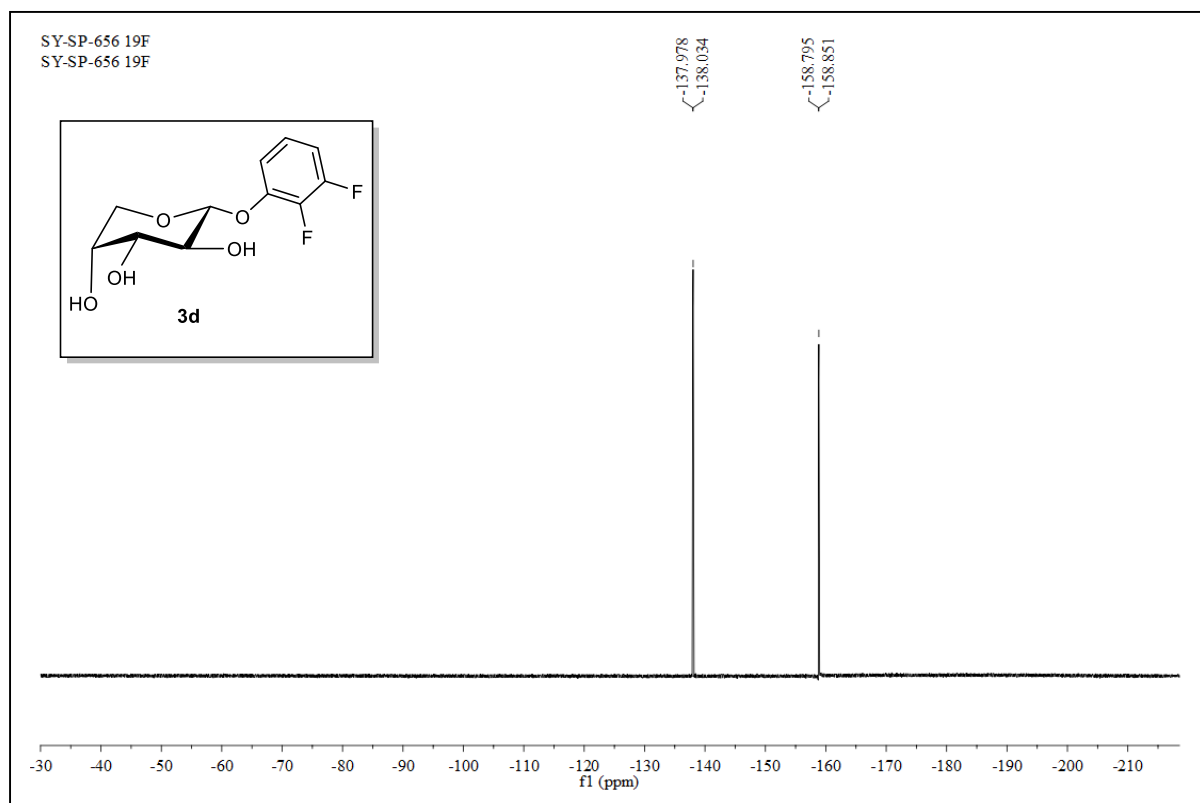


Fig. S54 ¹⁹F NMR (377 MHz, DMSO-d₆) spectrum of **3d**

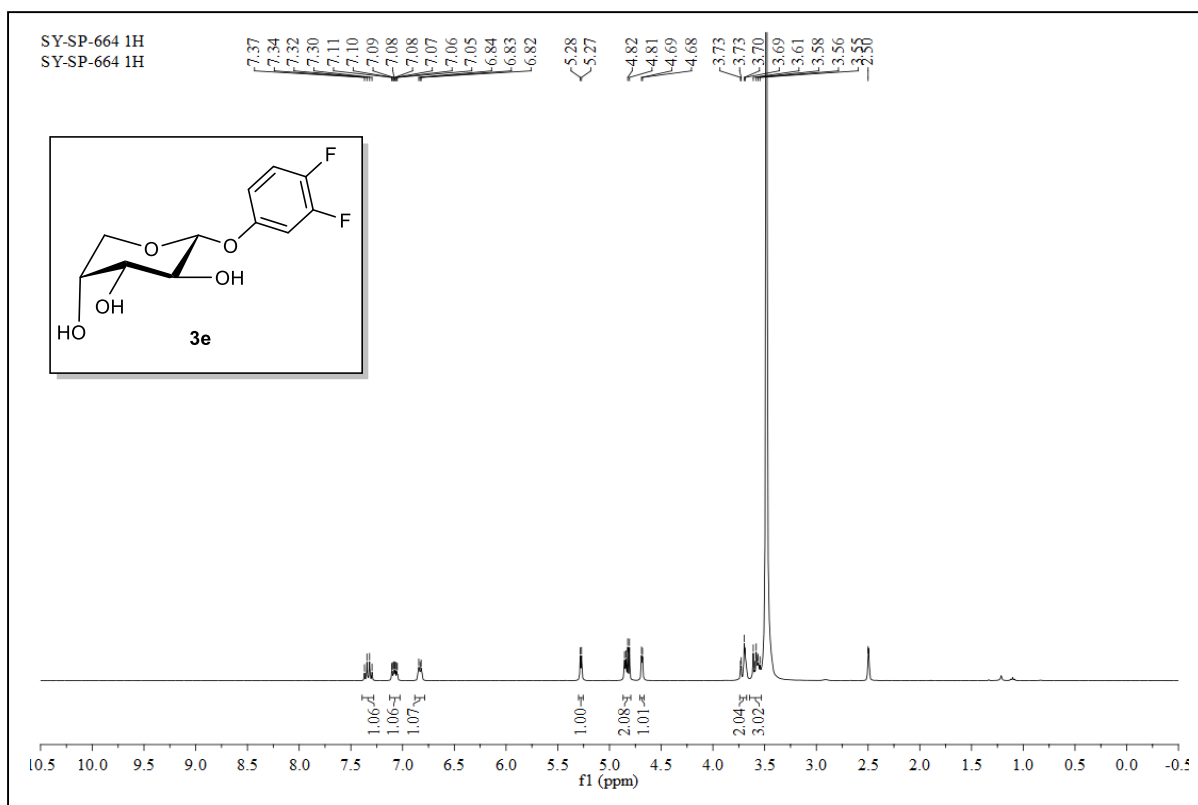


Fig. S55 $^1\text{H-NMR}$ (400 MHz, DMSO- d_6) spectrum of **3e**

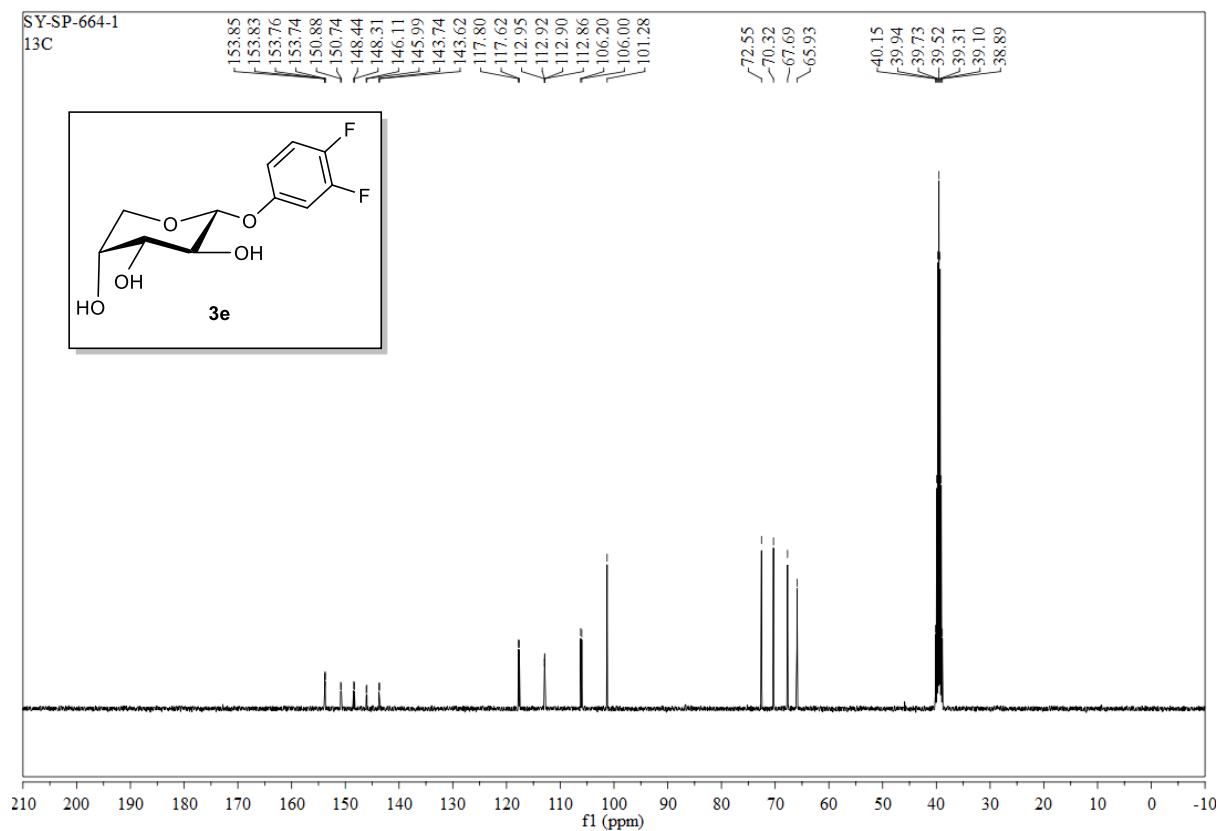


Fig. S56 $^{13}\text{C}\{^1\text{H}\}$ NMR (100 MHz, DMSO- d_6) spectrum of **3e**

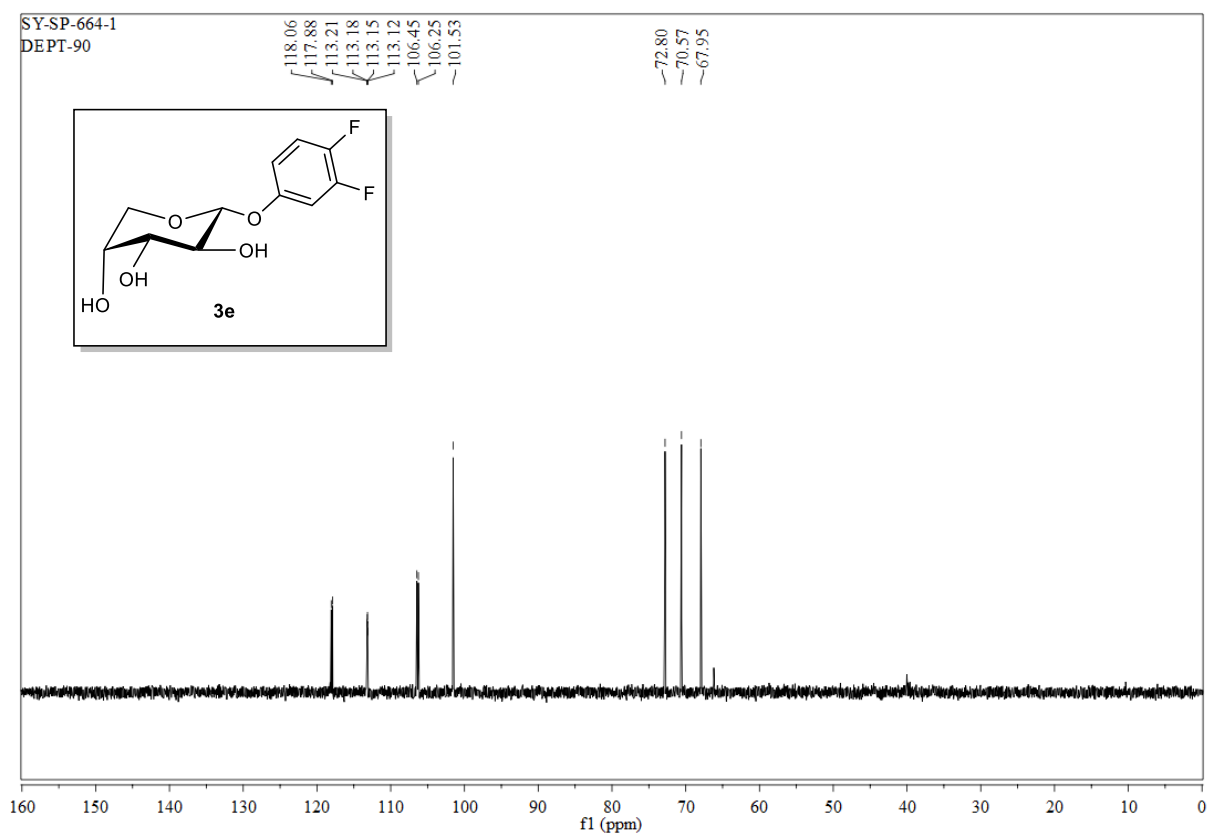


Fig. S57 DEPT 90 NMR (100 MHz, DMSO-d6) spectrum of **3e**

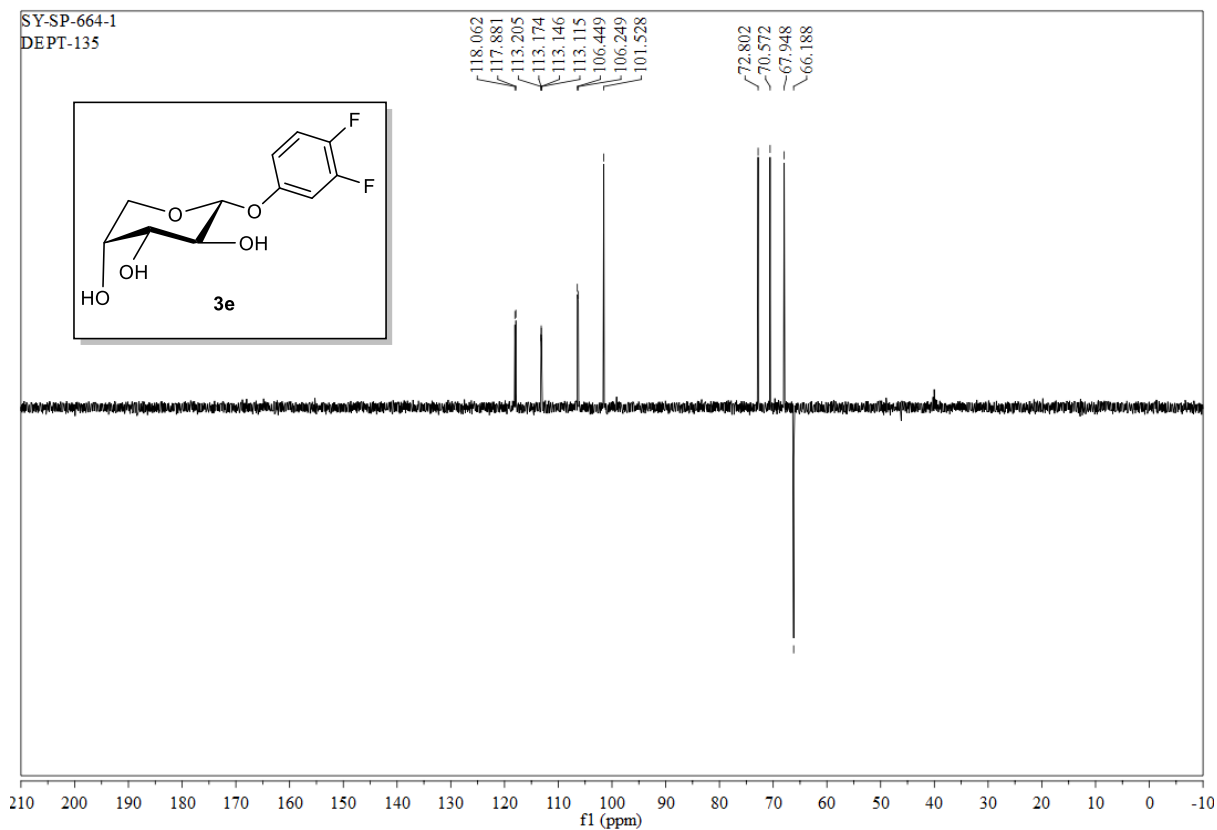


Fig. S58 DEPT 135 NMR (100 MHz, DMSO-d6) spectrum of **3e**

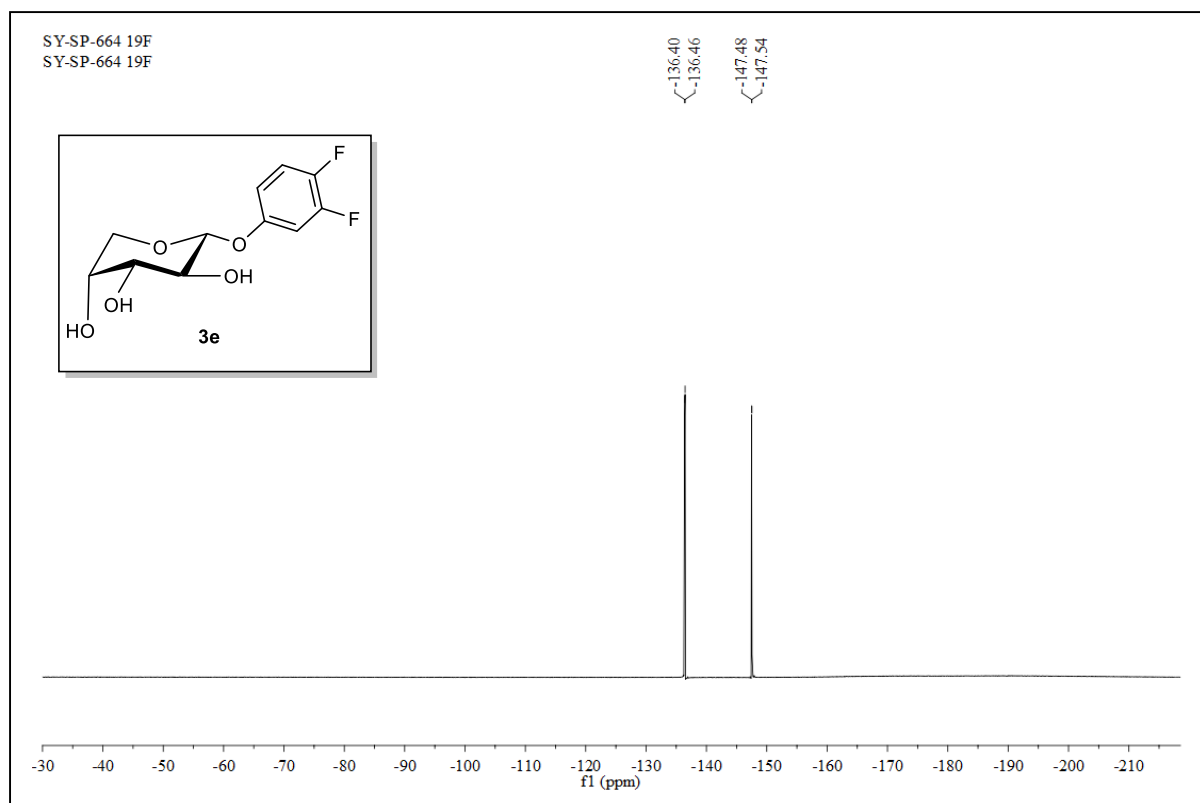


Fig. S59 ^{19}F -NMR (377 MHz, DMSO-d₆) spectrum of **3e**

Table S40 Summary of NMR data for compounds **3a-3e**.

Sl. No.	Compound	Anomeric proton (H1) δ (ppm)	Aromatic protons	Anomeric carbon (C1) δ (ppm)
1	3a	4.93 (d, $J = 6.7$ Hz, 1H)	7.25–6.98 (m, 4H)	101.2
2	3b	4.88 (d, $J = 6.8$ Hz, 1H)	7.35–6.79 (m, 4H)	100.6
3	3c	4.77 (d, $J = 6.9$ Hz, 1H)	7.15–6.99 (m, 4H)	101.5
4	3d	4.96 (d, $J = 6.4$ Hz, 1H)	7.14–7.01 (m, 3H)	101.4
5	3e	4.86-4.81(m, 2H)	7.33 (dd, $J = 19.6$ and 9.2 Hz, 1H), 7.11-7.05 (m, 1H), 6.84-6.82 (m, 1H)	101.3