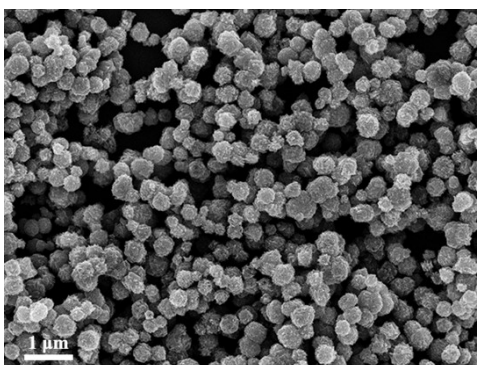
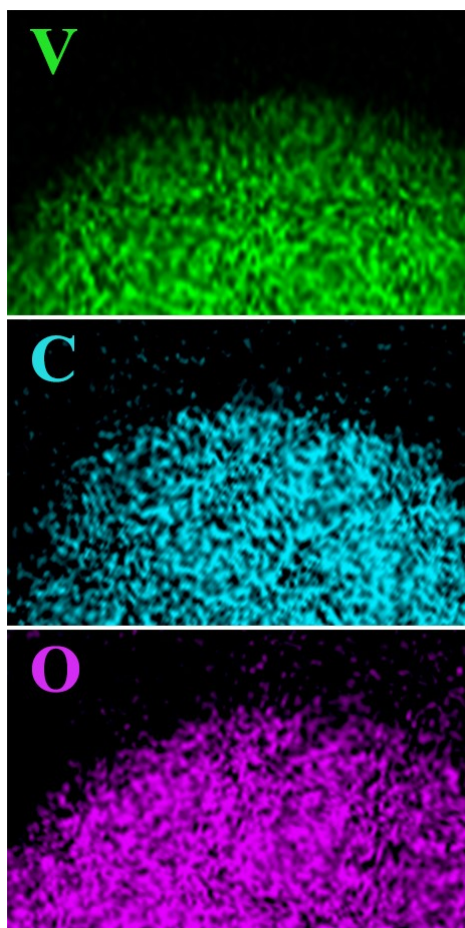


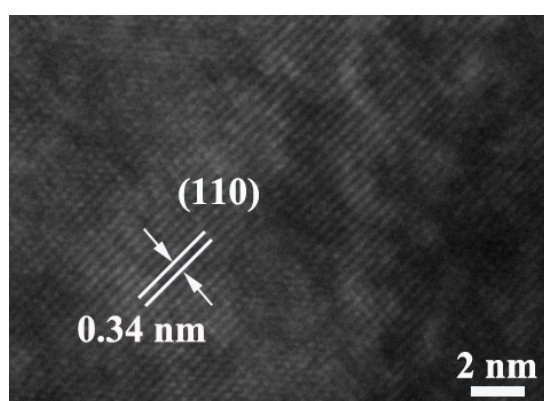
### Supporting Information



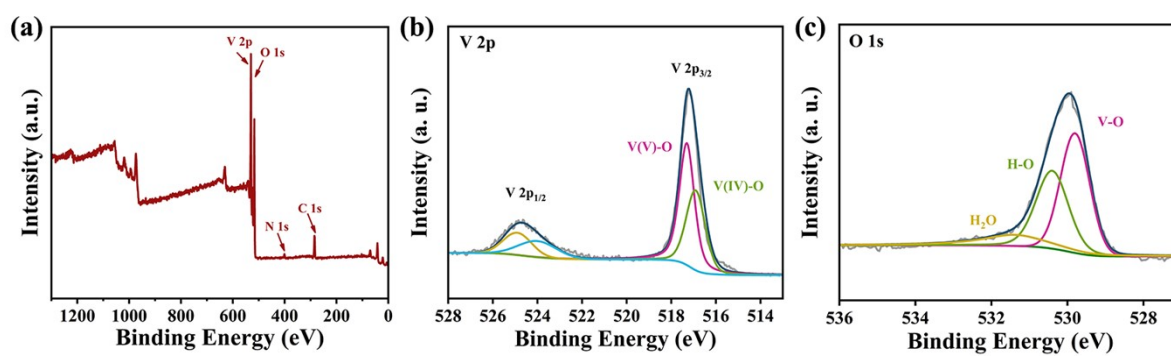
**Fig. S1** SEM image of the  $V_2O_5$  cathode.



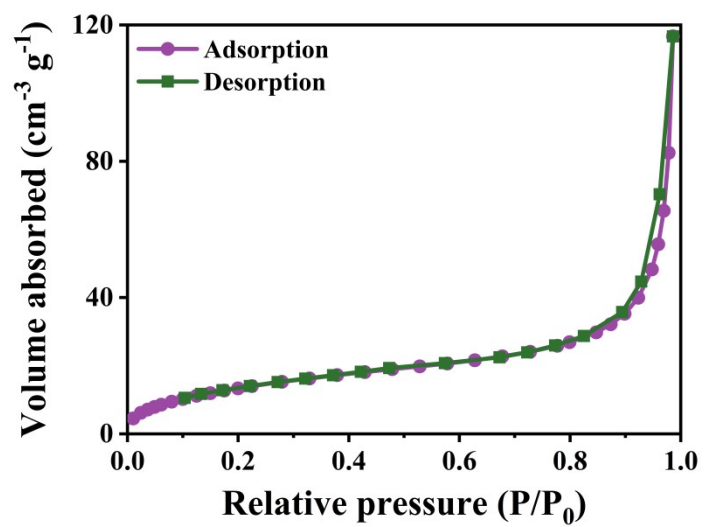
**Fig. S2.** The element mapping images of  $V_2O_5$ -TEMPO.



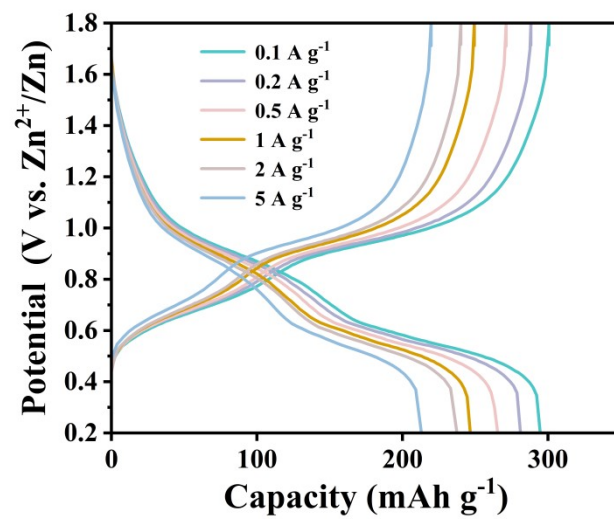
**Fig. S3** HRTEM images of the  $V_2O_5$  cathode.



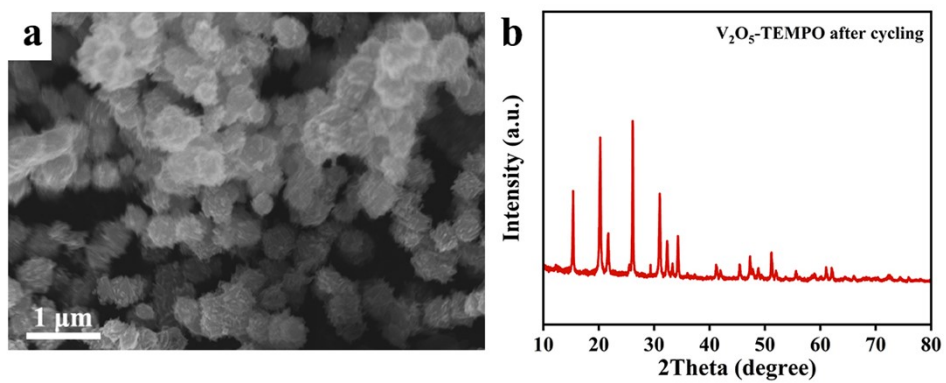
**Fig. S4** (a) XPS full spectrum of V<sub>2</sub>O<sub>5</sub>-TEMPO electrode. The high-resolution signal fit spectrum of (b) V 2p and (c) O 1s in V<sub>2</sub>O<sub>5</sub>-TEMPO.



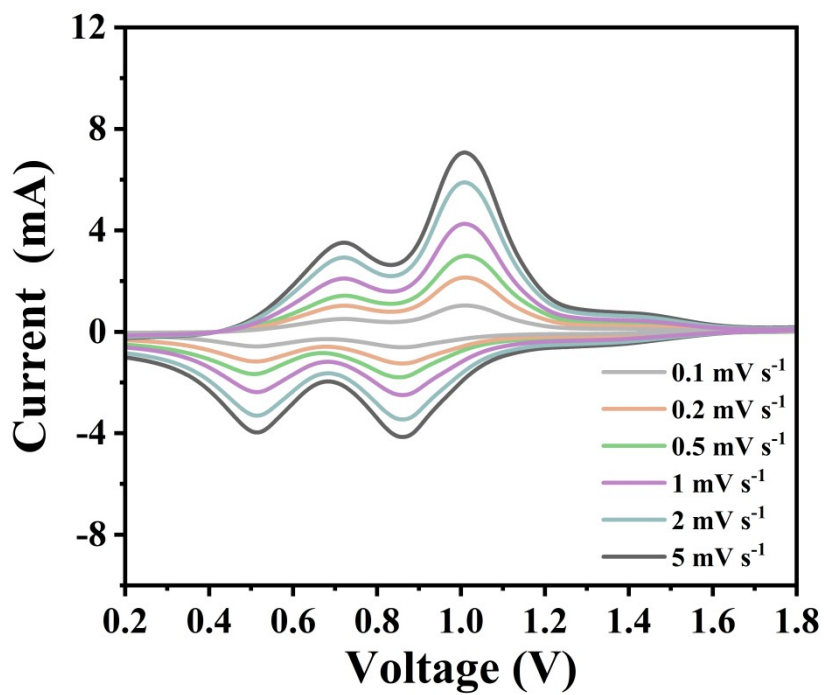
**Fig. S5** N<sub>2</sub> adsorption/desorption isotherms of V<sub>2</sub>O<sub>5</sub> cathode.



**Fig. S6** GCD curves of Zn//V<sub>2</sub>O<sub>5</sub> battery at different current densities.

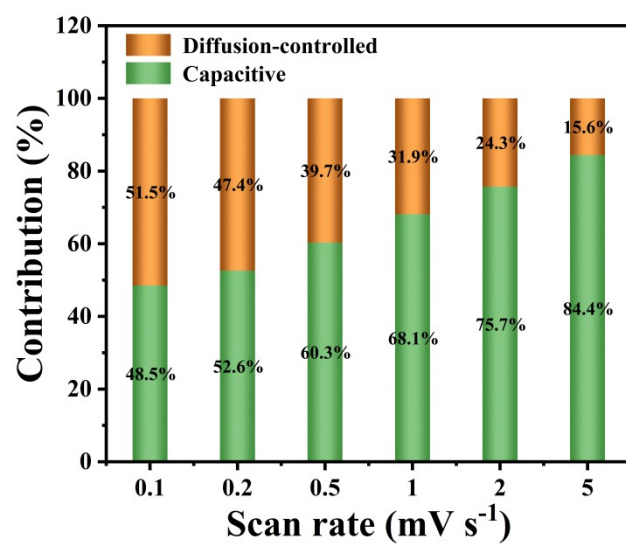


**Fig. S7** (a) SEM image and (b) XRD pattern of V<sub>2</sub>O<sub>5</sub>-TEMPO after 5,500 charging/discharging cycles at 2 A g<sup>-1</sup>.

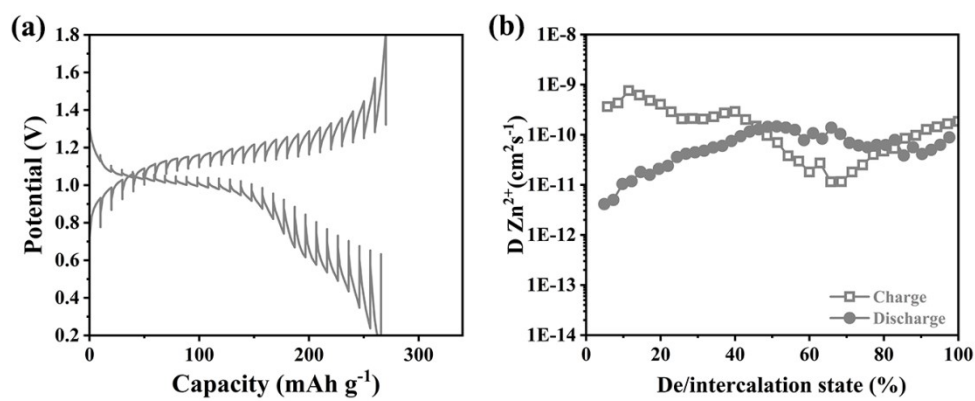


**Fig. S8** CV curves of the Zn//V<sub>2</sub>O<sub>5</sub> battery at various scan rates from 0.1 to 5 mV s<sup>-1</sup>.





**Fig. S9** Contribution ratios of capacitive-controlled and diffusion-controlled for Zn/V<sub>2</sub>O<sub>5</sub> battery at different scan rates.



**Fig. S10** (a) The charge/discharge GITT curves of the Zn//V<sub>2</sub>O<sub>5</sub> battery at the current density of 0.5 A g<sup>-1</sup>. (b) The Zn<sup>2+</sup> coefficient.