

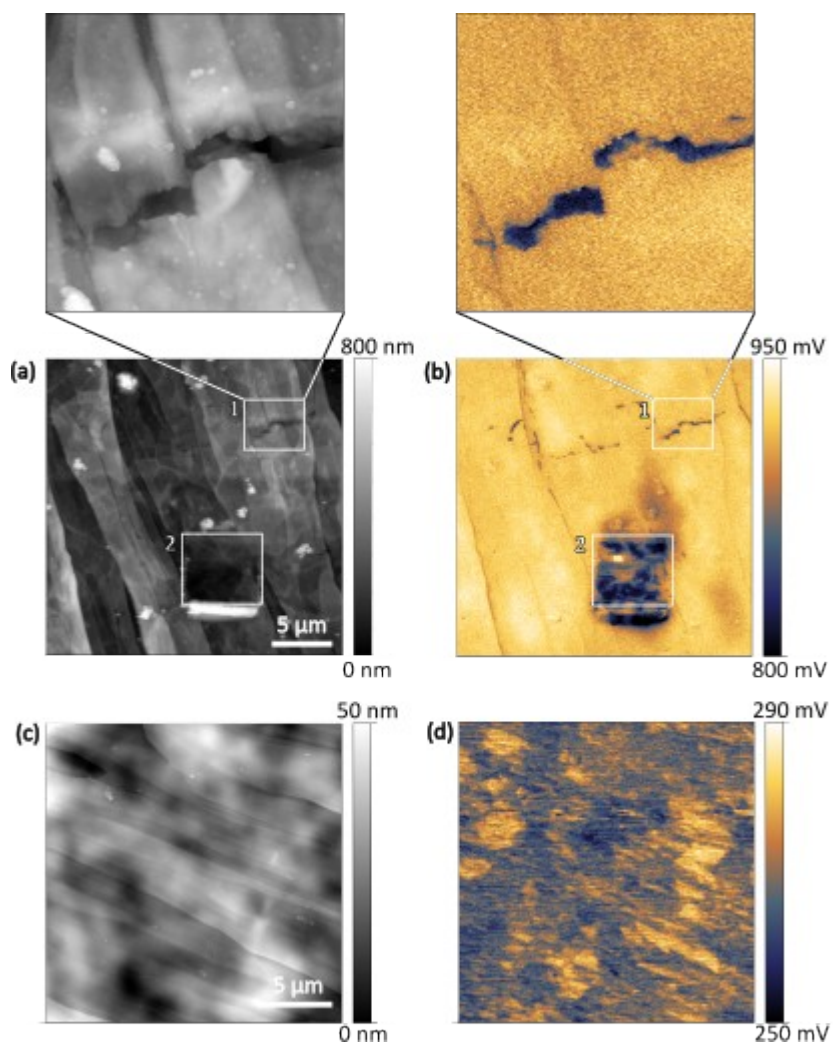
## Supplementary Information for

Explaining the EC-PC disparity in Li-ion batteries: how interface stiffness governs SEI formation on graphite

*Sergey Yu. Luchkin,\* Egor M. Pazhetnov*

*Center for Energy Science and Technology, Skolkovo Institute of Science and Technology, Moscow, Russia*

*\*Email: s.luchkin@skoltech.ru*



**Supplementary figure 1.** AFM topography (a, c) and surface potential (b, d) images of the basal HOPG surface after SEI formation (a, b) and pristine (c, d). Zoomed region 1 in (a) and (b) show cracks. Region 2 correspond to area where the SEI layer was removed by scratching by the AFM probe.