

Supplementary Material

Bio-inspired polypyrrole nanowire arrays on melamine foam with high-performance photo/electro-thermal conversion for all-weather cleanup of crude oil

Qin Wang, Yu-long Liu, Zi-jie Huang, Zi-cheng Tang, De-xiang Sun, Jing-hui Yang,

Xiao-dong Qi, Yong Wang**

Q. Wang, Y. Liu, Z. Huang, Z. Tang, D. Sun, J. Yang, X. Qi, Y. Wang

School of Chemistry, Key Laboratory of Advanced Technologies of Materials (Ministry of Education), Southwest Jiaotong University, Chengdu, 610031, China.

E-mail: qxdjianhu@163.com (Xiao-dong Qi); yongwang1976@swjtu.edu.cn (Y. Wang)

List of Figures:

Figure S1. The SEM image and EDS of the MF with gold layer.

Figure S2. SEM images of MF@PPy foams at different polymerization times. (a) 0.5 h, (b) 1 h, (c) 2 h, and (d) 3h.

Figure S3. The SEM image of (a) MF@PPy-3, (b) MF@PPy-3/PDMS and (c) the cross-section of MF@PPy-3/PDMS.

Figure S4. The WCA of MF@PPy-3/PDMS.

Figure S5. (a) TGA and (b) DTG curves of the MF and MF@PPy/PDMS foams.

Figure S6. The long-term stability of Joule heating performance of MF@PPy/PDMS foams.

Figure S7. Photographs and SEM images of the MF@PPy/PDMS foam in its original (a, b) and compressed (c, d) states.

Video S1. The continuous oil absorption process of MF@PPy/PDMS under simulated illumination (1 sunlight).

Video S2. The continuous oil absorption process of MF@PPy/PDMS under a power (2 V).

Video S3. The dynamic cleaning up oil process of MF@PPy-3/PDMS foam under NIR laser irradiation.

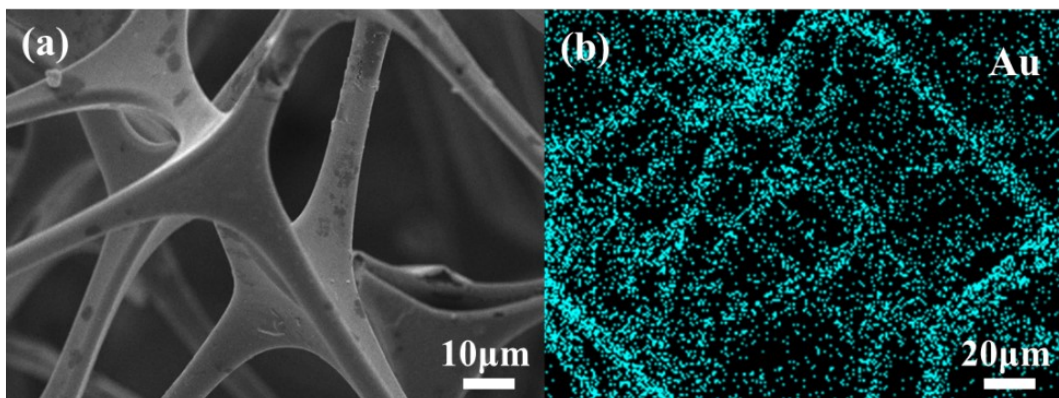


Figure S1. The SEM image and EDS of the MF with gold layer.

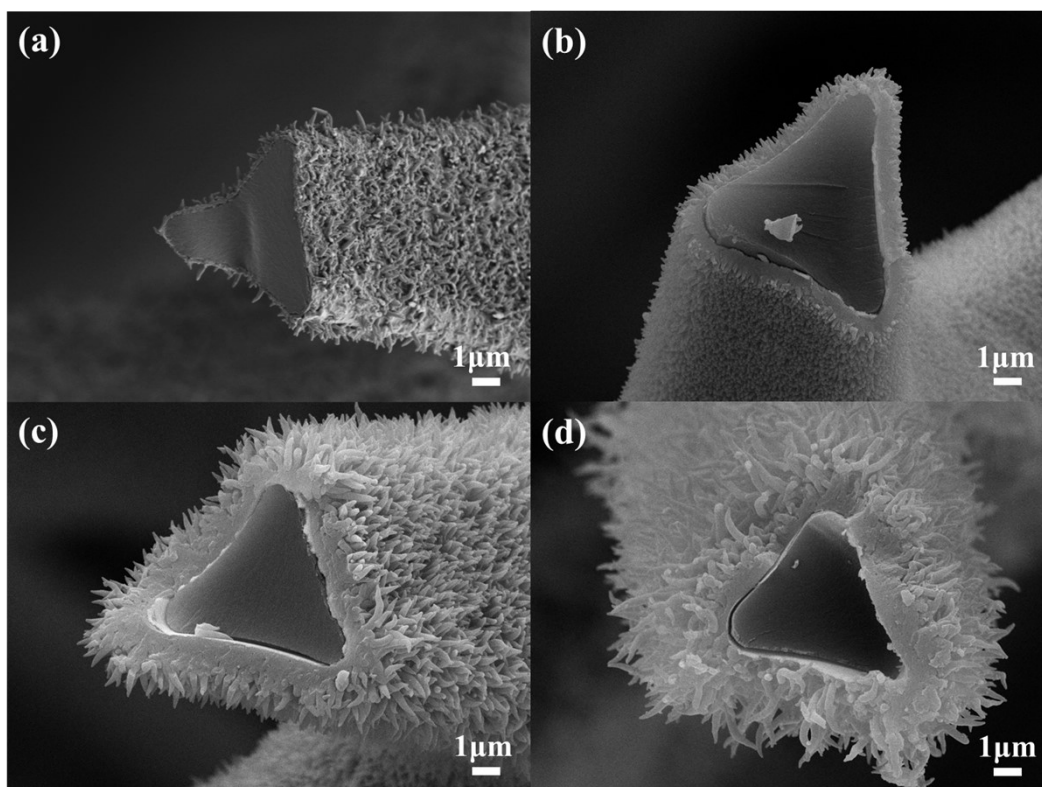


Figure S2. SEM images of MF@PPy foams at different polymerization times. (a) 0.5 h, (b) 1 h, (c) 2 h, and (d) 3h.

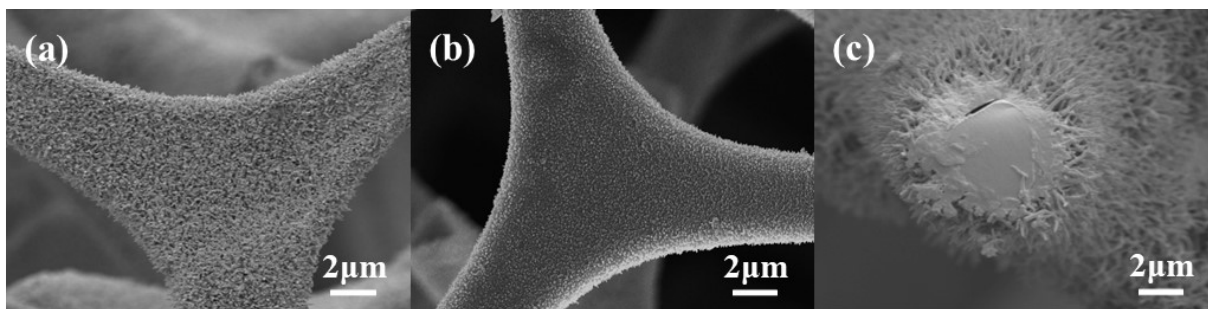


Figure S3. The SEM image of (a) MF@PPy-3, (b) MF@PPy-3/PDMS and (c) the cross-section of MF@PPy-3/PDMS.

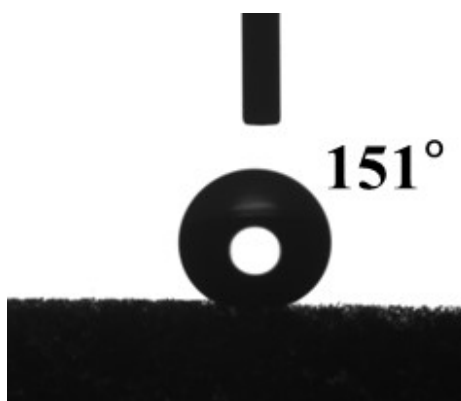


Figure S4. The WCA of MF@PPy-3/PDMS.

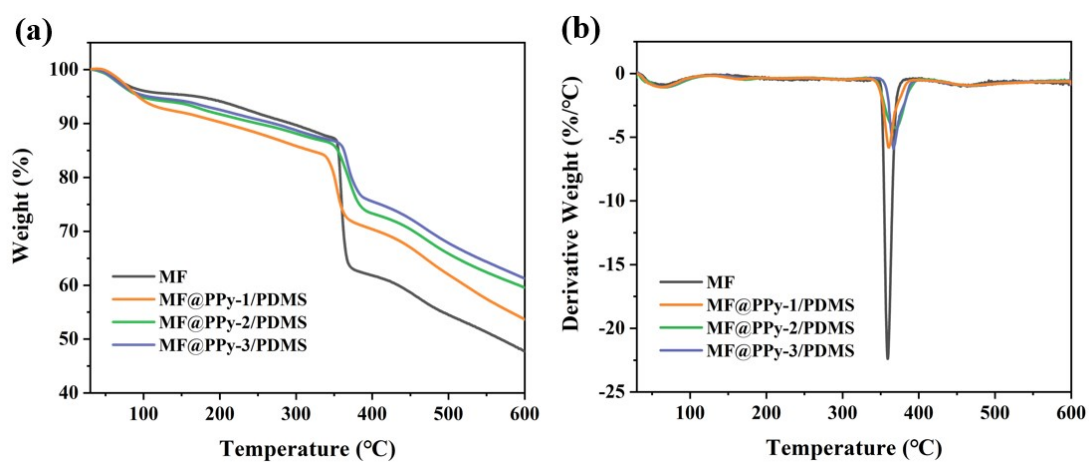


Figure S5. (a) TGA and (b) DTG curves of the MF and MF@PPy/PDMS foams.

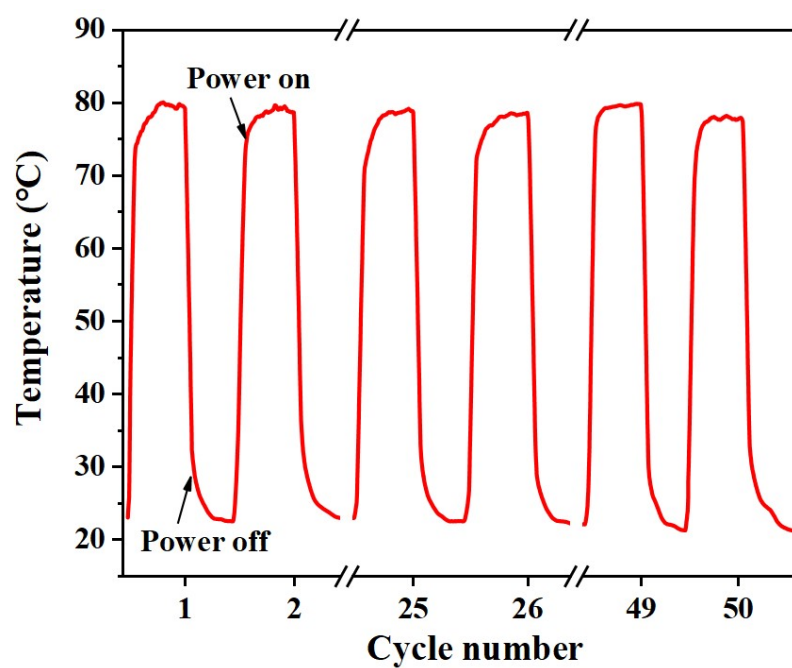


Figure S6. The long-term stability of Joule heating performance of MF@PPy/PDMS foams.

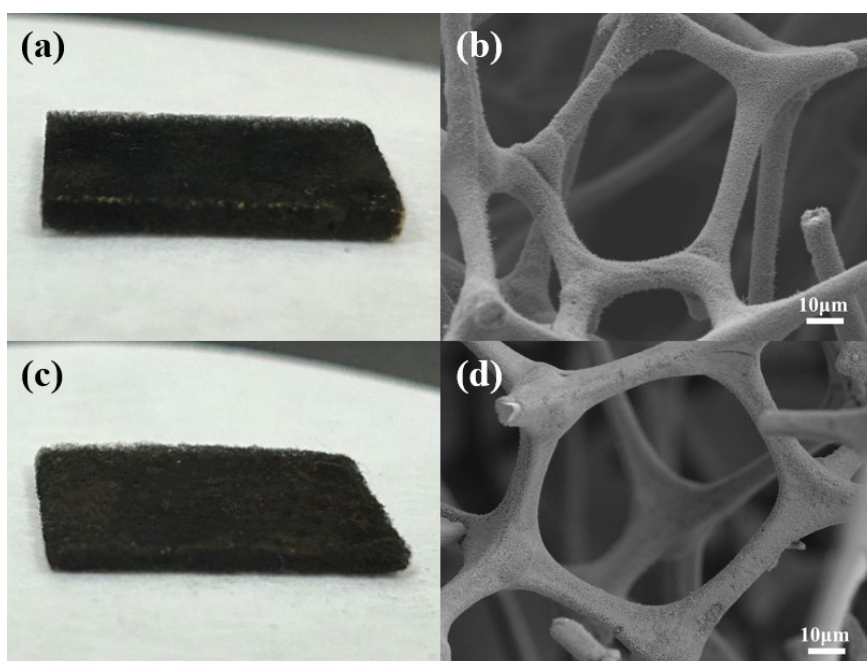


Figure S7. Photographs and SEM images of the MF@PPy/PDMS foam in its original (a, b) and compressed (c, d) states.