

# Screening of poly-beta amino esters coated emulsion of ketorolac for cartilage delivery

By

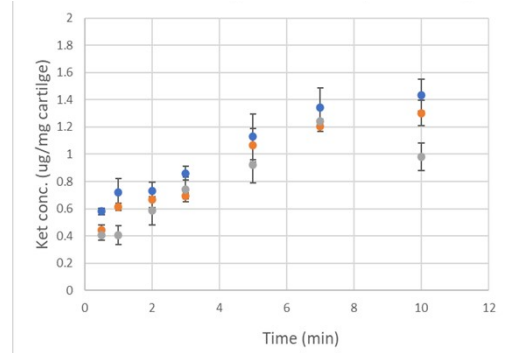
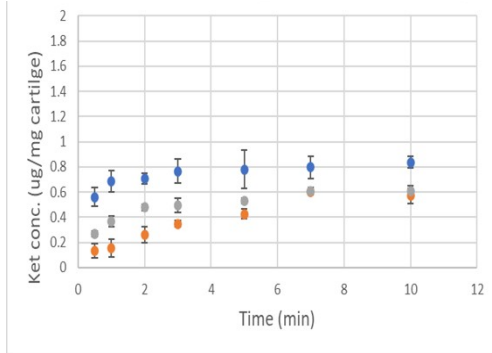
Tahani Saeedi <sup>a</sup>, Polina Prokopovich <sup>a,\*</sup>

## Supplementary info

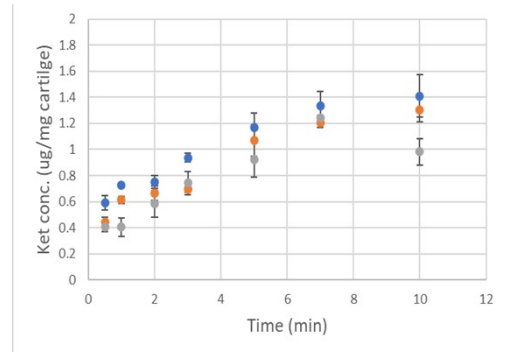
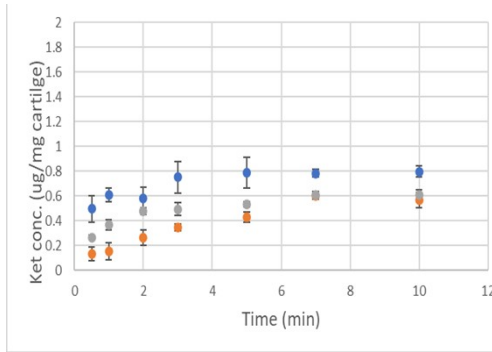
## Untreated cartilage tissue

## GAG depleted cartilage tissue

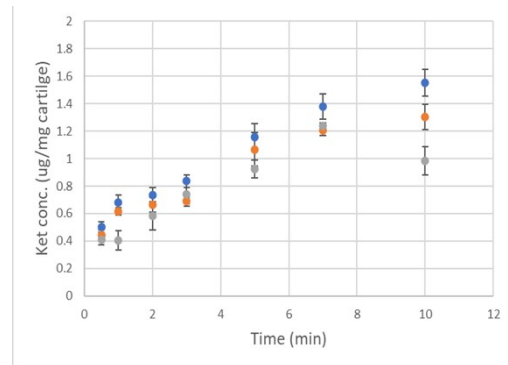
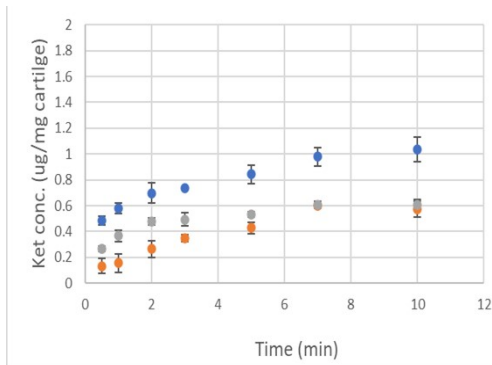
**A1**



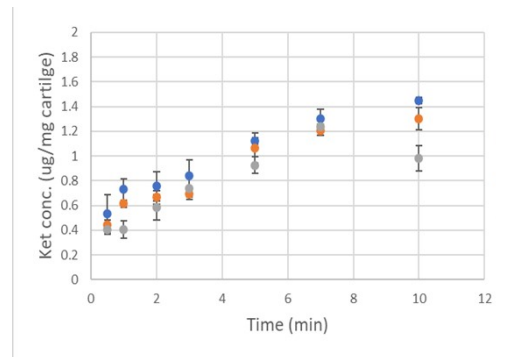
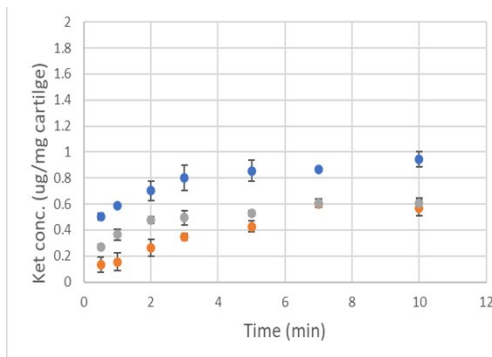
**B1**



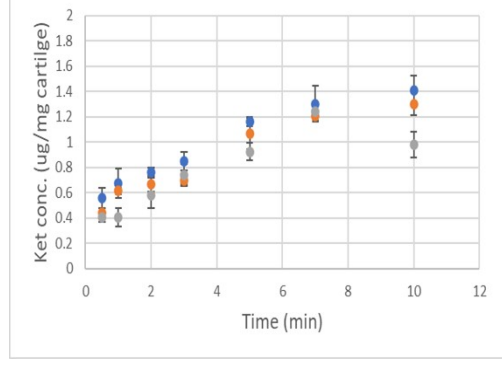
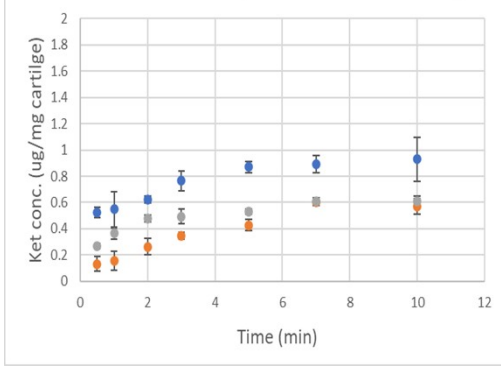
**D1**



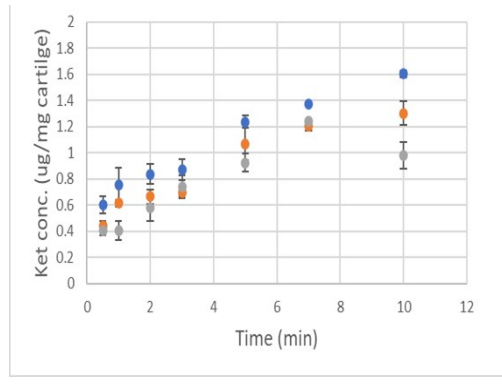
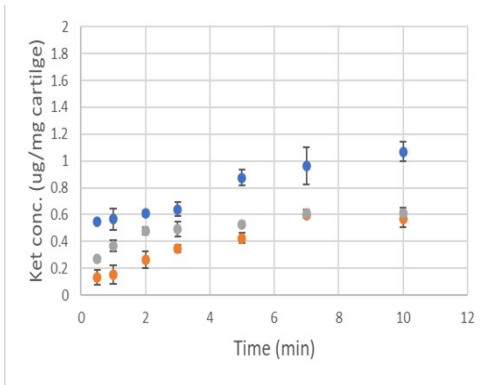
**E1**



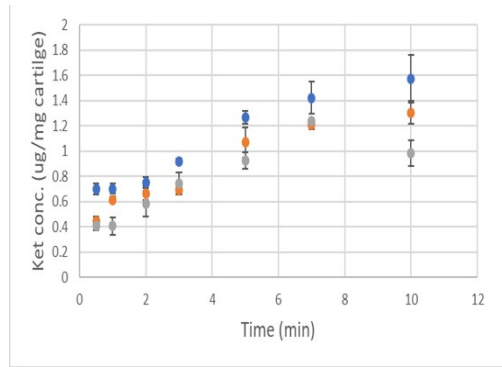
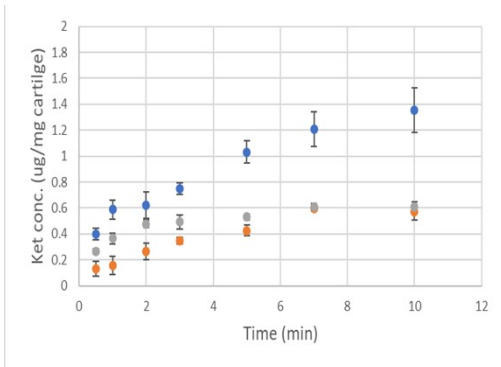
**F1**



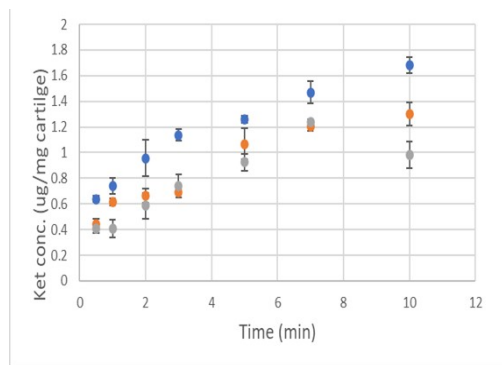
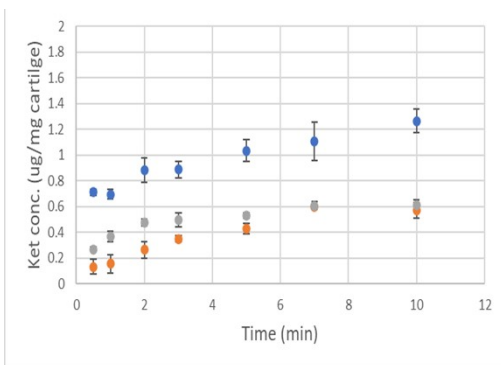
**A3**



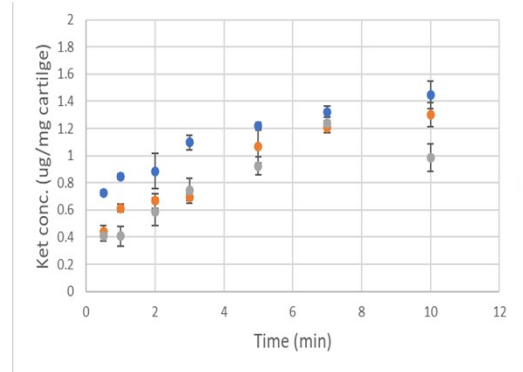
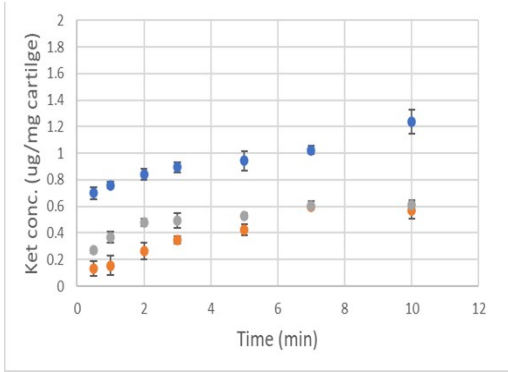
**B3**



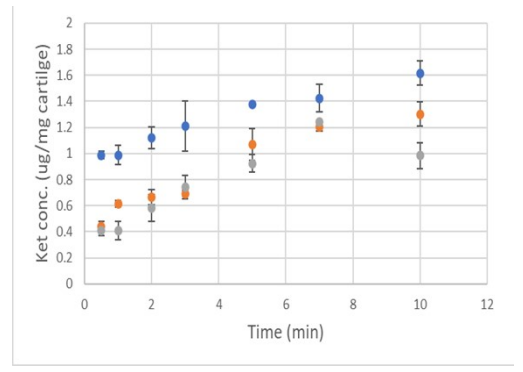
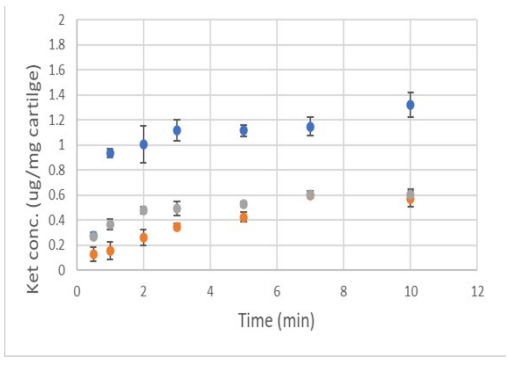
**D3**



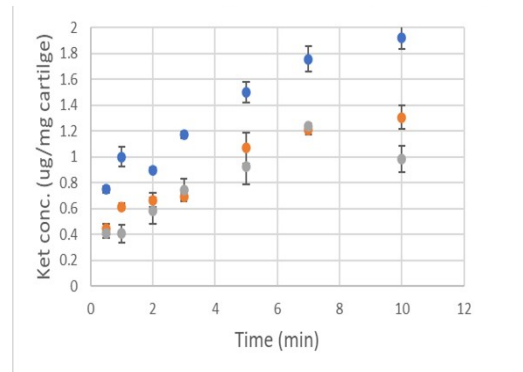
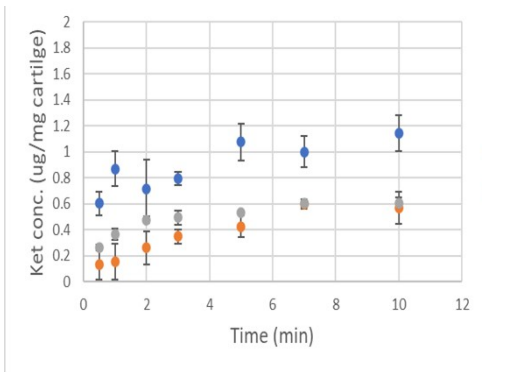
**E3**



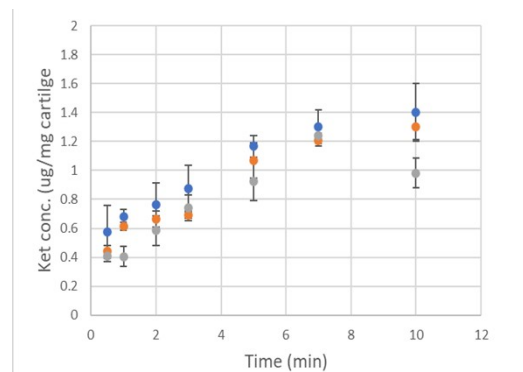
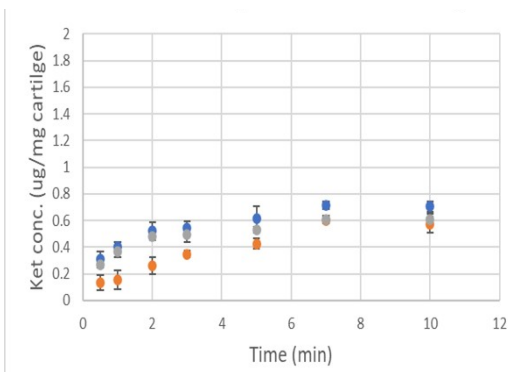
**F3**



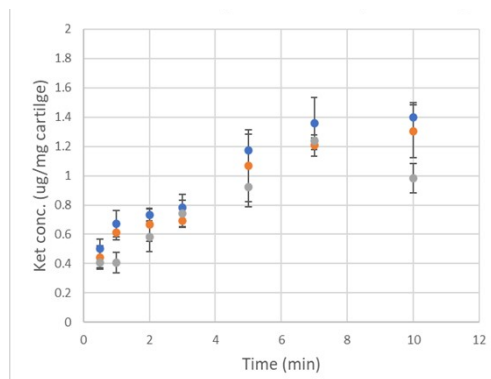
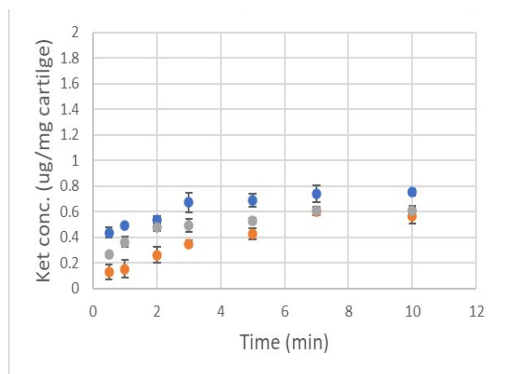
**A5**



**D5**



**E5**



**F5**

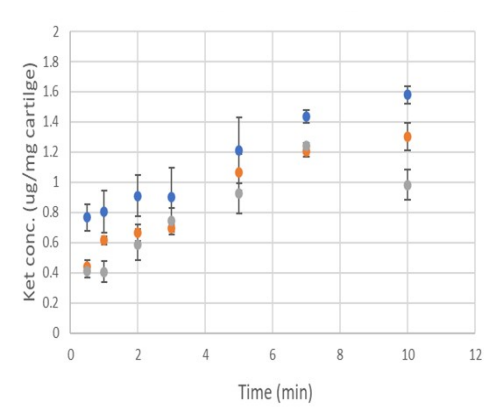
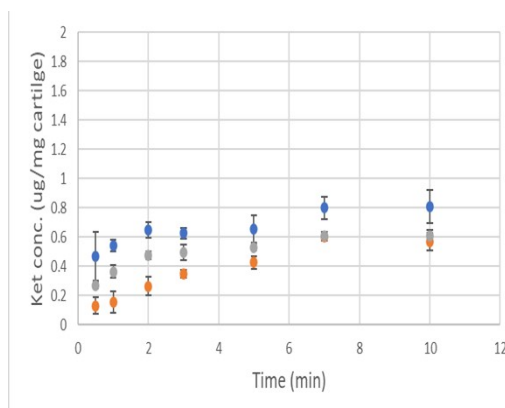
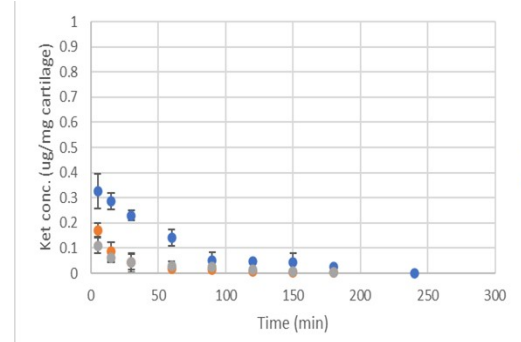
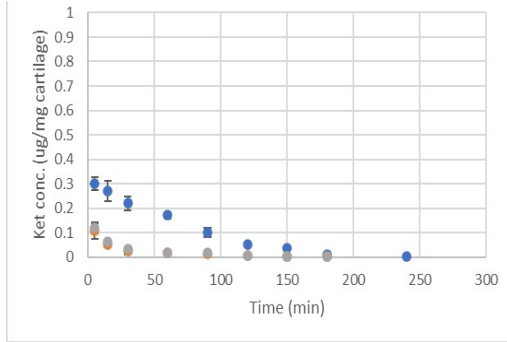


Figure S1: Comparison of ketorolac uptake into cartilage after 10 min exposure to (●) ketorolac o/w emulsion saturated with PBAE, (●) ketorolac in PBS, and (●) ketorolac o/w emulsion in both untreated and GAG depleted cartilage using different PBAEs.

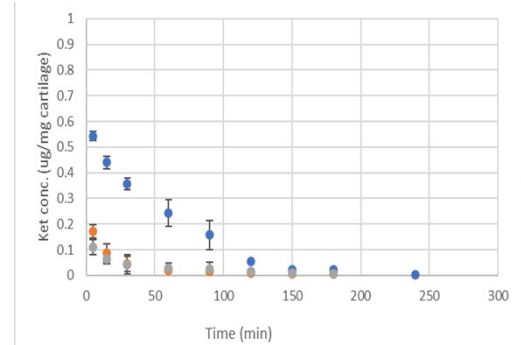
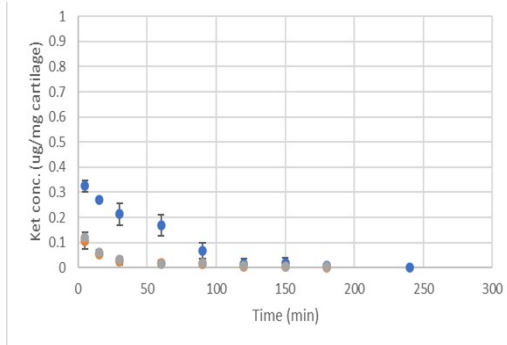
## Untreated cartilage tissue

## GAG depleted cartilage tissue

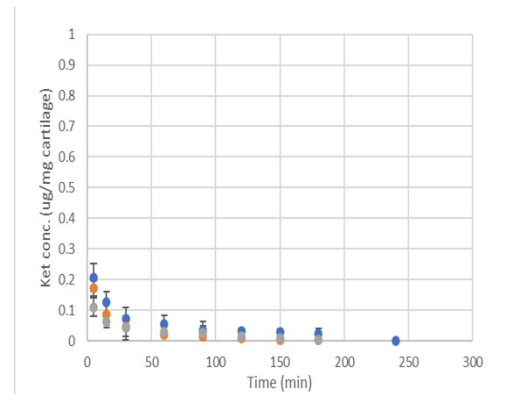
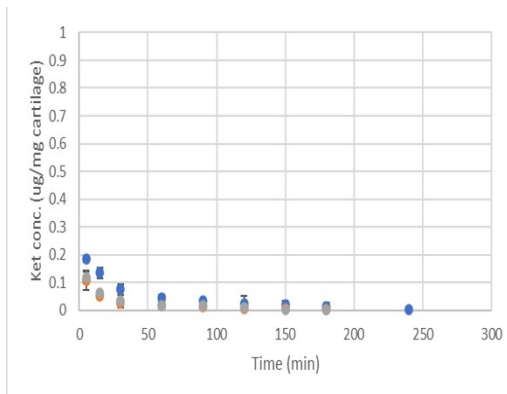
**A1**



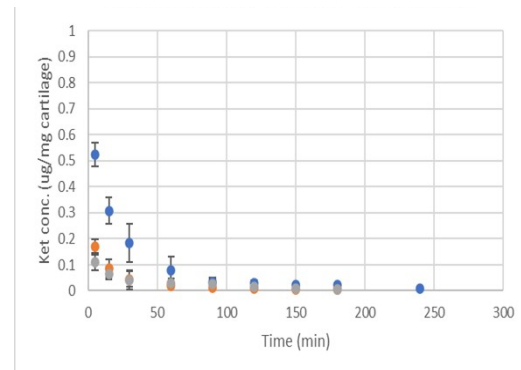
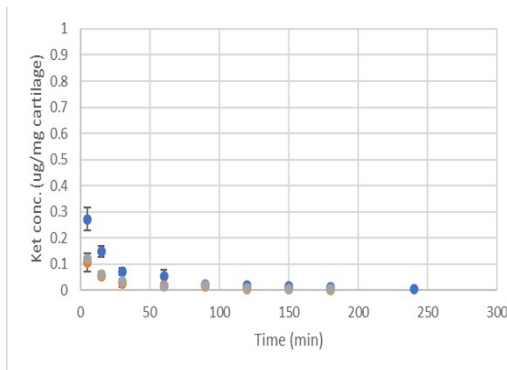
**B1**



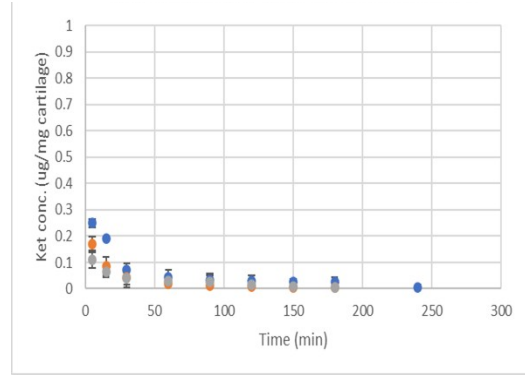
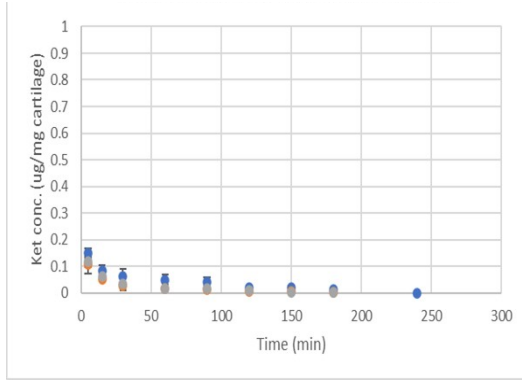
**D1**



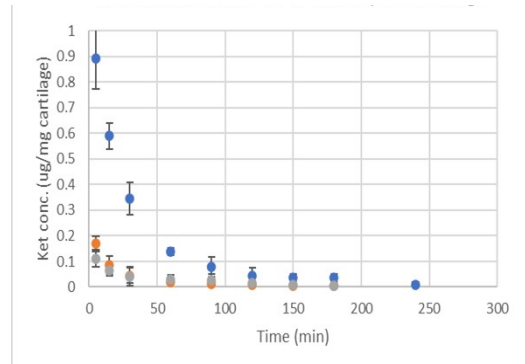
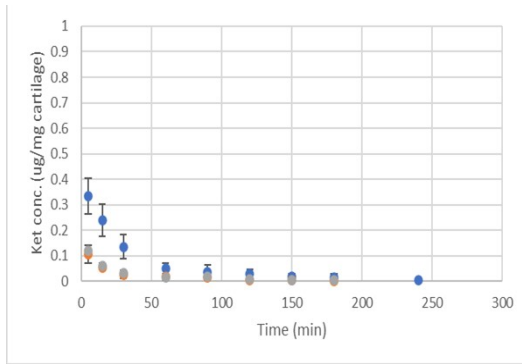
**E1**



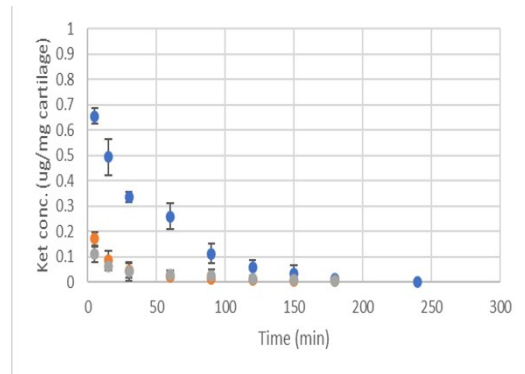
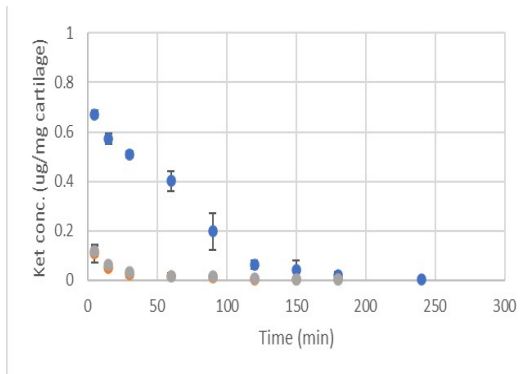
**F1**



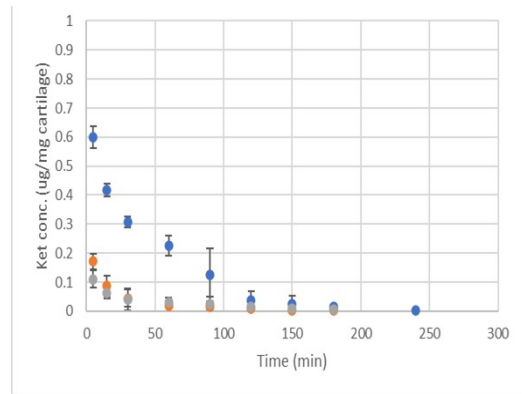
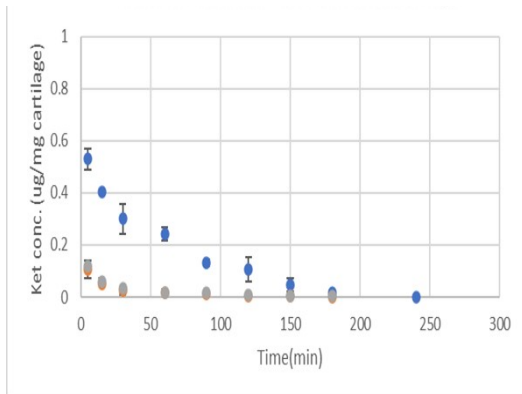
**A3**



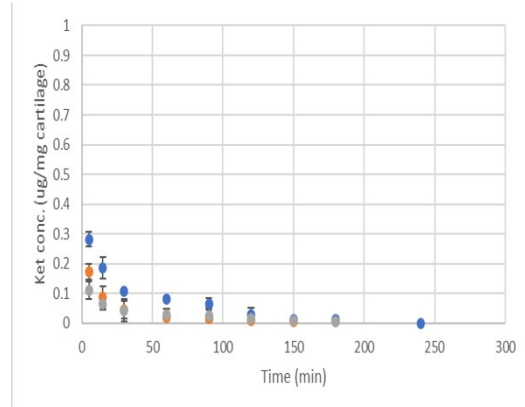
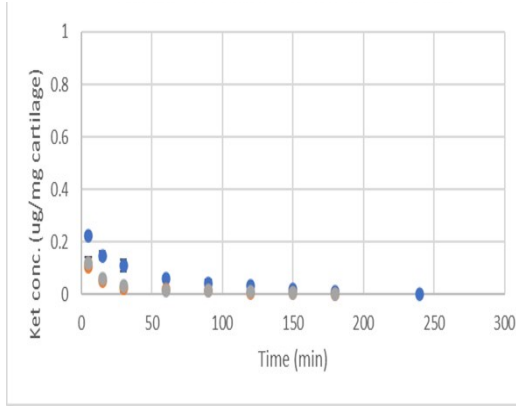
**B3**



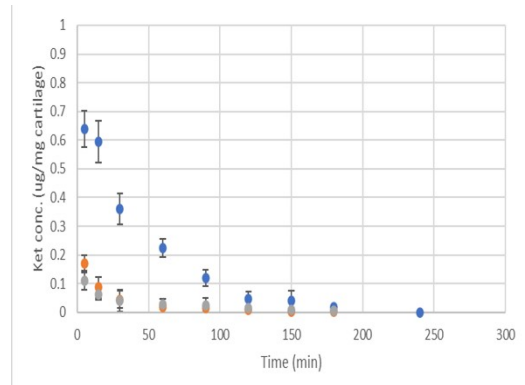
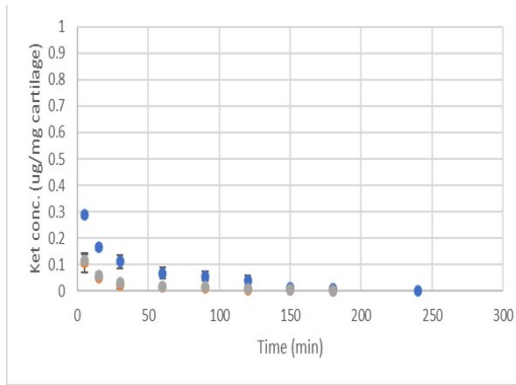
**D3**



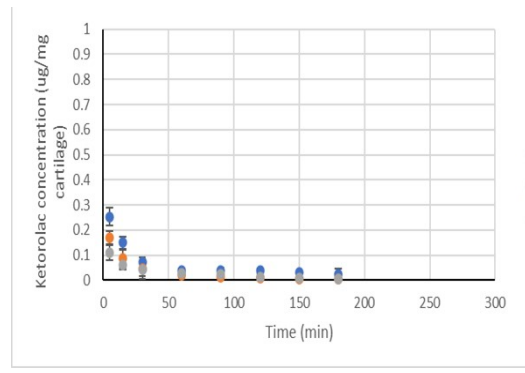
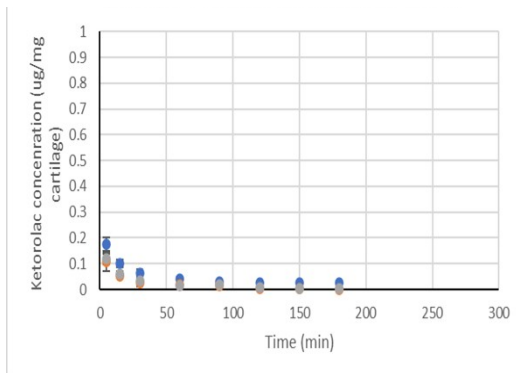
**E3**



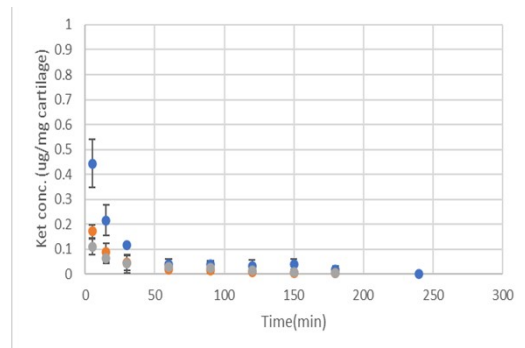
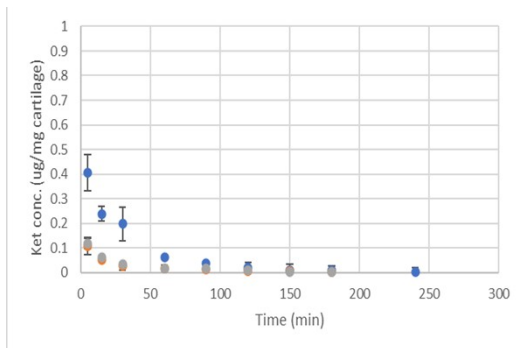
**F3**



**A5**

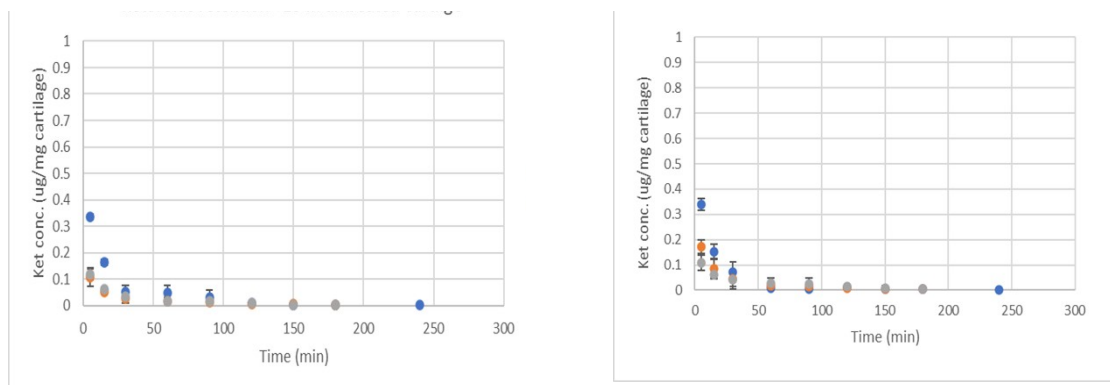


**D5**





**E5**



**F5**

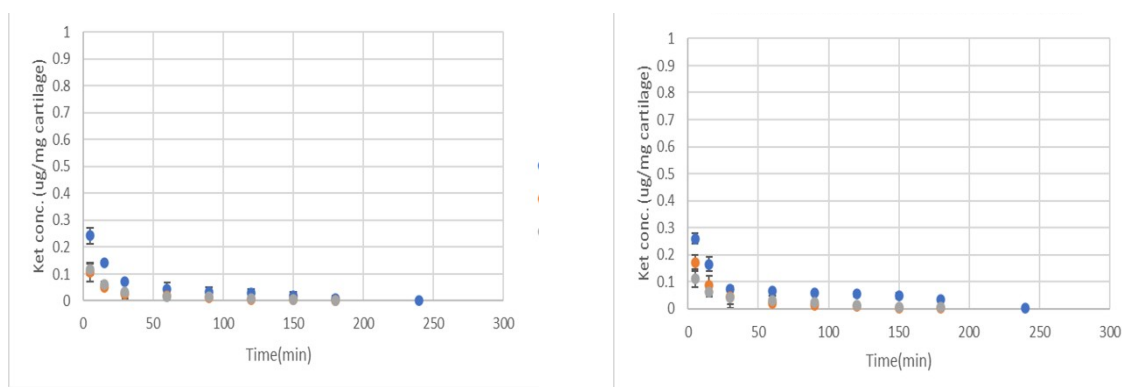
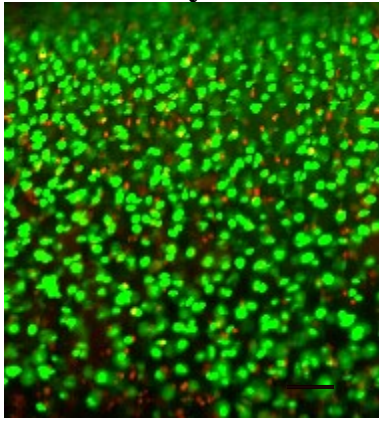
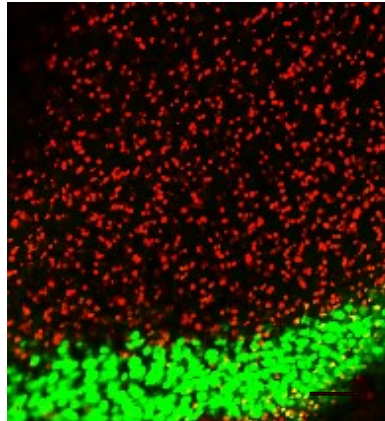


Figure S2: Comparison of ketorolac retention into cartilage for 300 min (5 hours) after 10 min exposure to (●) ketorolac o/w emulsion saturated with PBAE, (●) ketorolac in PBS, and (●) ketorolac o/w emulsion in both untreated and GAG depleted cartilage using different PBAEs.

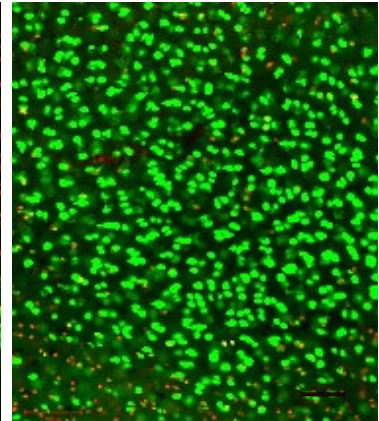
**Media only**



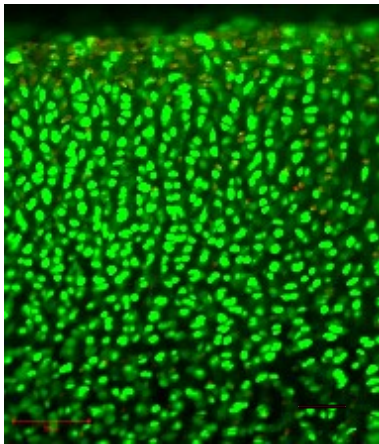
**IL-1 $\alpha$**



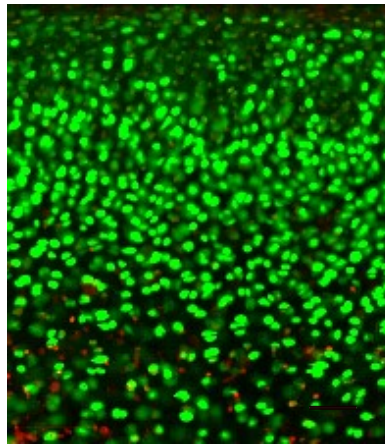
**B5 + IL-1 $\alpha$**



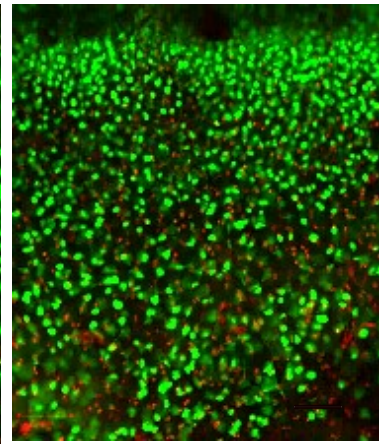
**Ketorolac emulsion coated with B5**



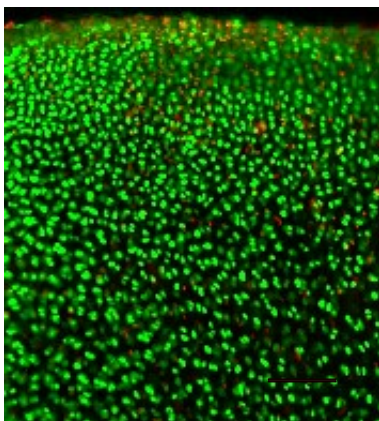
**Ketorolac emulsion coated with B5 + IL-1 $\alpha$**



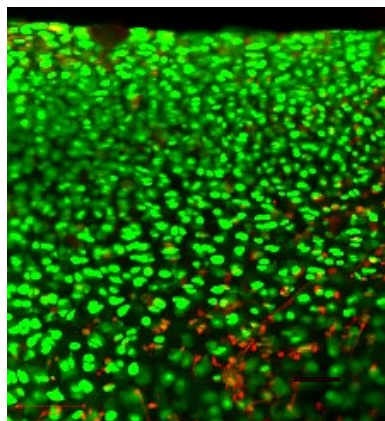
**F3 + IL-1 $\alpha$**



**Ketorolac emulsion coated with F3**



**Ketorolac emulsion coated with F3+IL-1 $\alpha$**



*Figure S3 Examples of images of live/dead fluorescently stained sections of bovine cartilage explants exposed to IL-1 $\alpha$  (1 ng/ml) and coated with F3 and B5 or uncoated ketorolac emulsions on Day 2. Live*

*cells were stained green by calcein, and dead cells were stained red by ethidium homodimer. Scale bar 100 $\mu$ m.*