

Supporting information

Hybrid PNA-peptide hydrogels as injectable CEST-MRI agents

Elisabetta Rosa,^{‡,a} Enza Di Gregorio,^{‡,b} Giuseppe Ferrauto,^b Carlo Diaferia,^a Enrico Gallo,^c Enzo Terreno^{*,b} and Antonella Accardo^{*,a}

^aDepartment of Pharmacy and Interuniversity Research Centre on Bioactive Peptides (CIRPeB) “Carlo Pedone”, University of Naples “Federico II”, Via D. Montesano 49, Naples 80131, Italy.

E-mail: antonella.accardo@unina.it

^bMolecular and Preclinical Imaging Center, Department of Molecular Biotechnology and Health Sciences, University of Turin, Via Nizza 52, Turin, Italy.

E-mail: enzo.terreno@unito.it

^cIRCCS Synlab SDN, Via Gianturco 113, Naples, 80143, Italy

[‡]These authors have contributed equally.

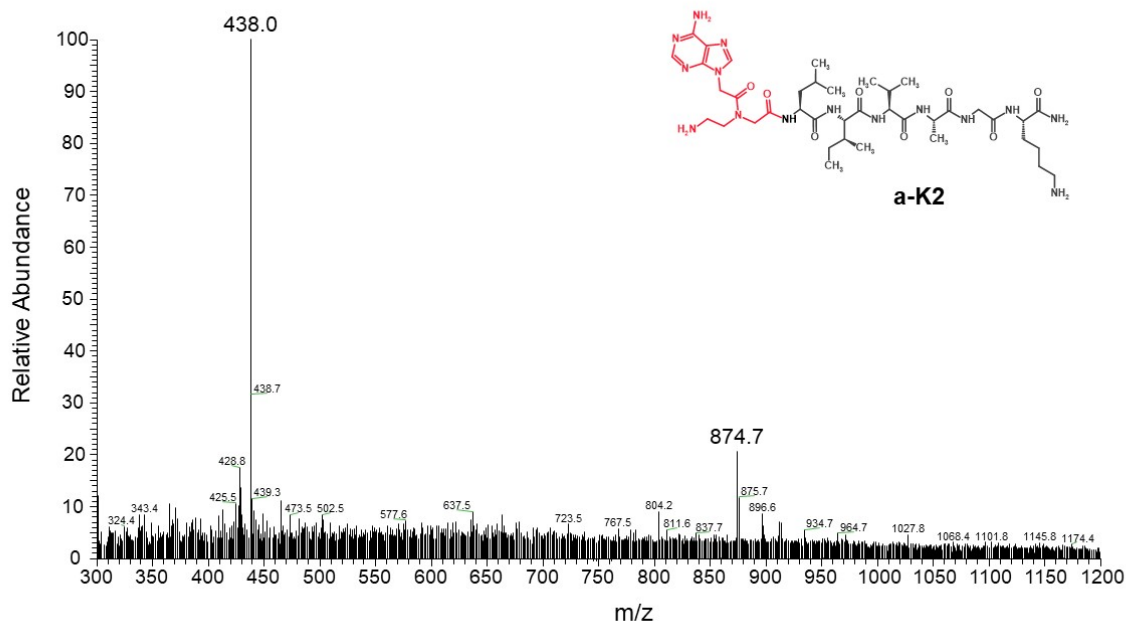


Figure S1: ESI mass spectrum of a-K2 peptide

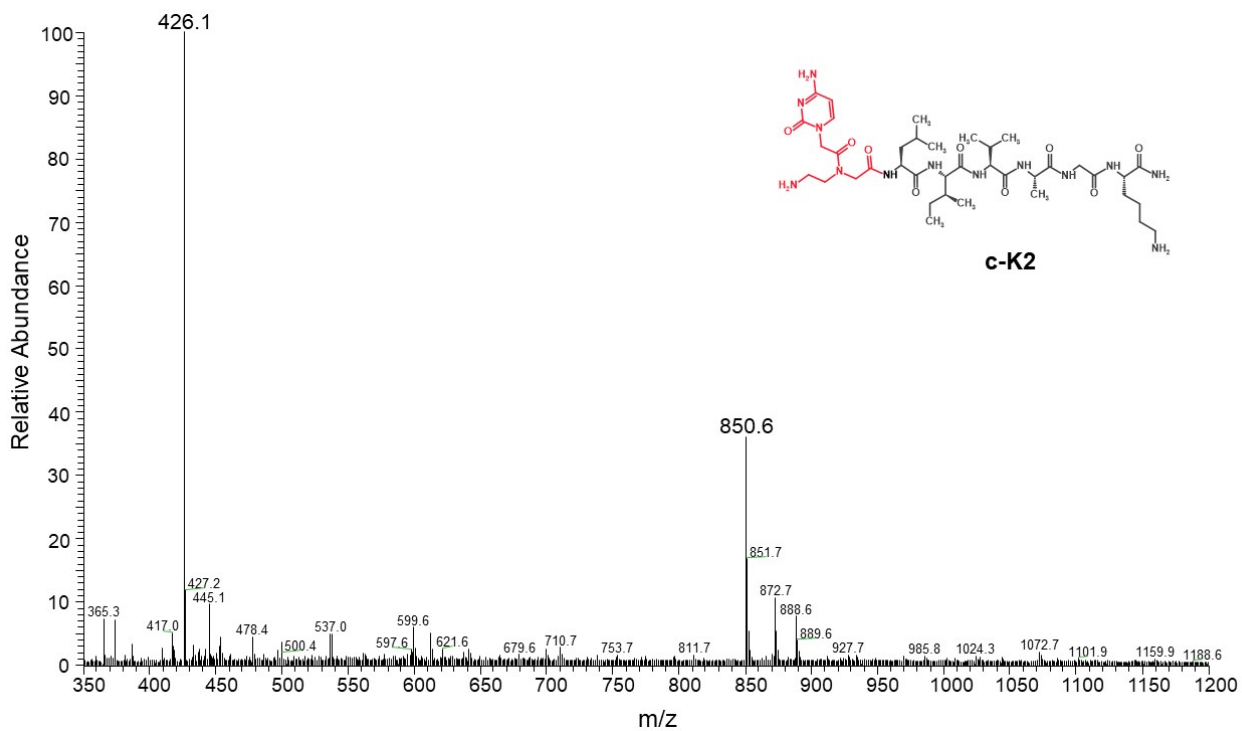


Figure S2: ESI mass spectrum of c-K2 peptide

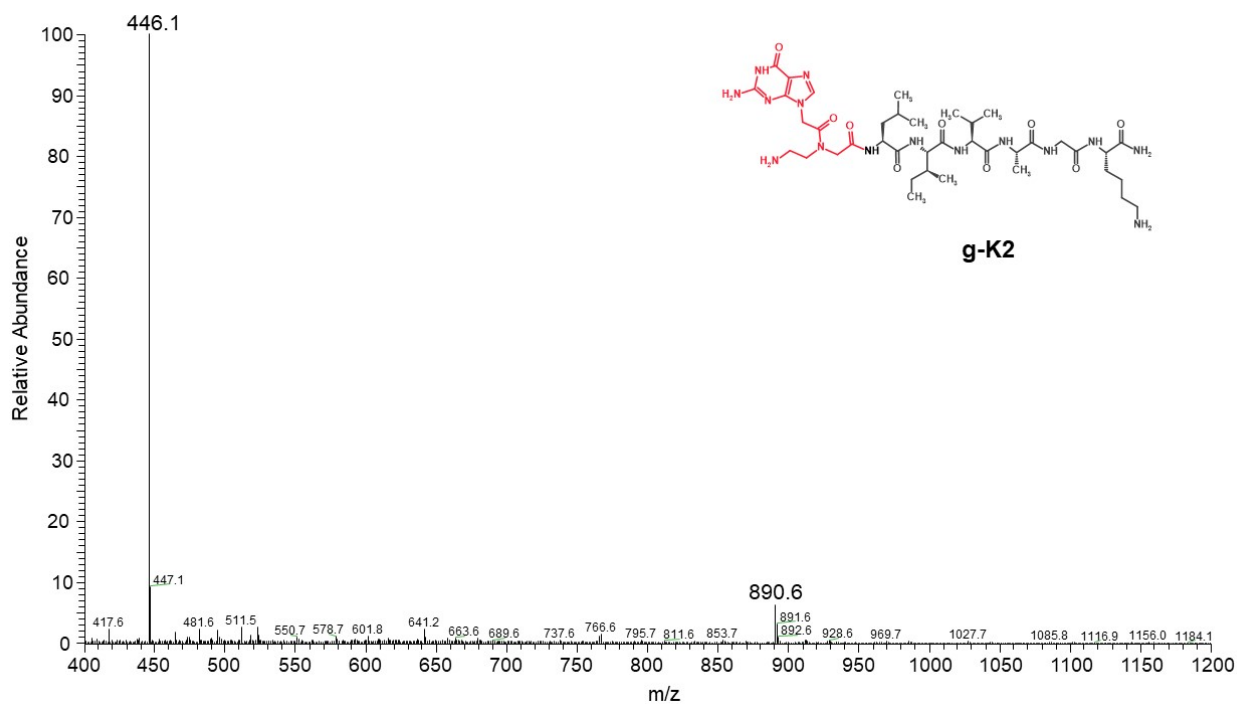


Figure S3: ESI mass spectrum of g-K2 peptide

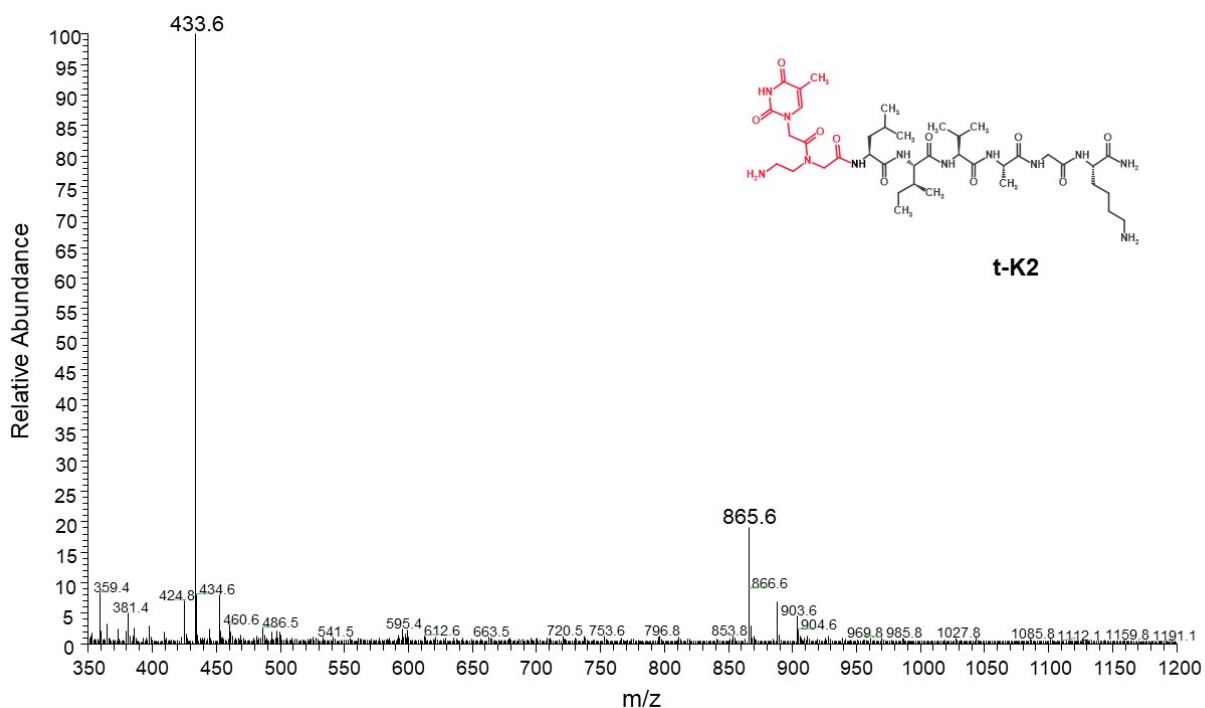


Figure S4: ESI mass spectrum of t-K2 peptide

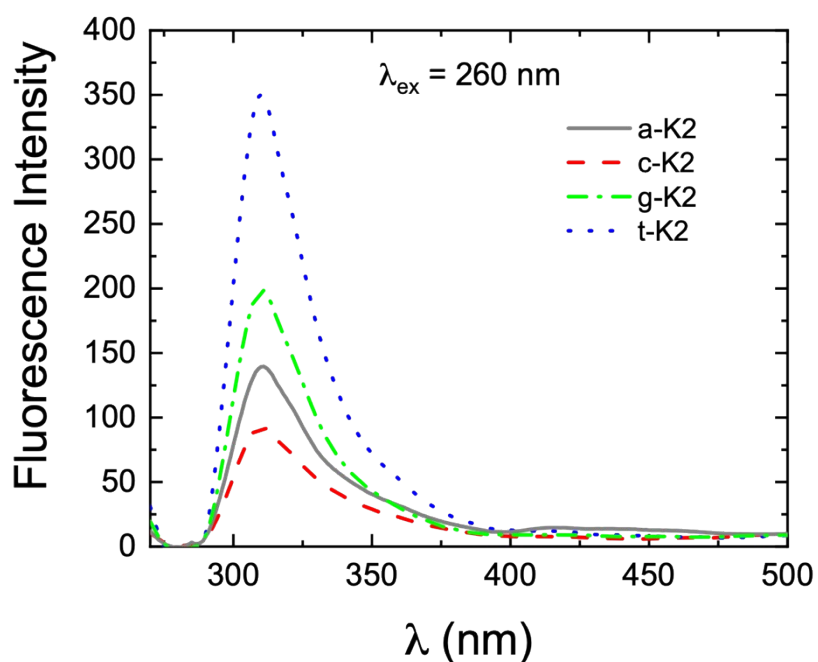


Figure S5: Fluorescence emission spectra of peptide solution (at a concentration of $5 \cdot 10^{-6}$ M) excited at 260 nm.

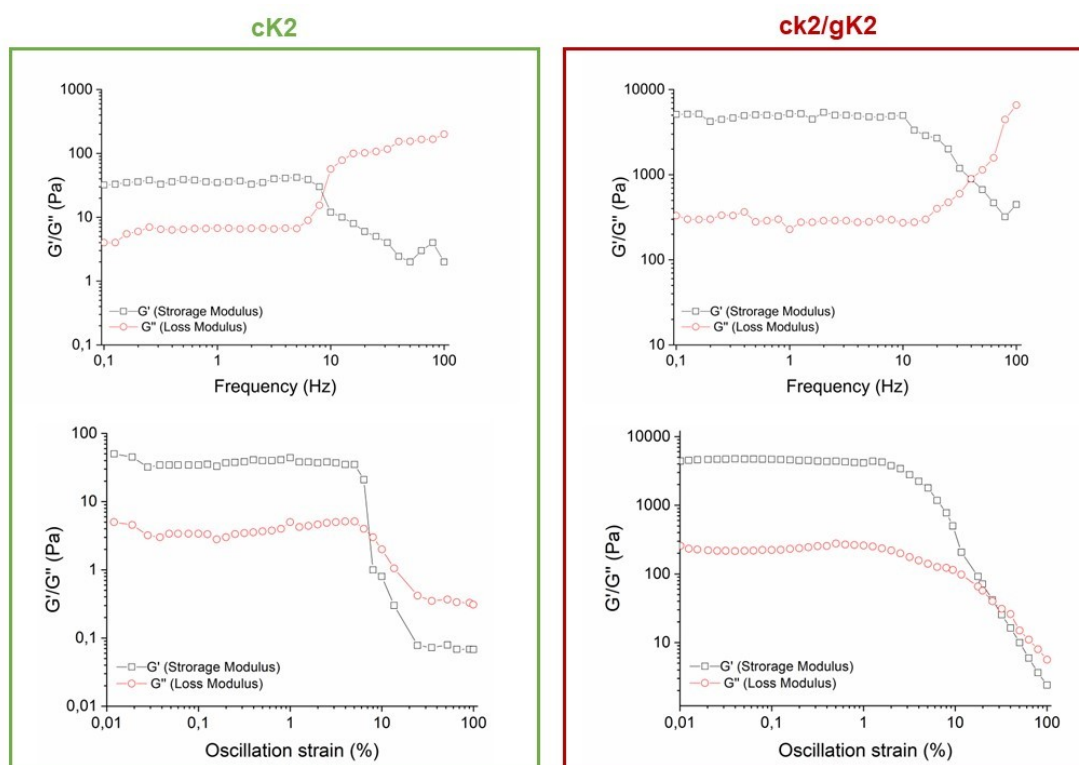


Figure S6: Frequency and oscillation strain sweeps for c-K2 and c-K2/g-K2 HGs.

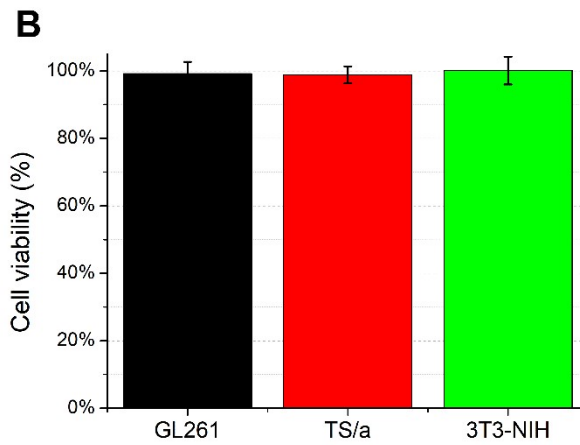


Figure S7: Cell viability assessed by MTT assay for GL261, TS/a and 3T3-NIH cells incubated in presence of medium conditioned with c-K2/g-K2 3% *w/v* mixed hydrogels.

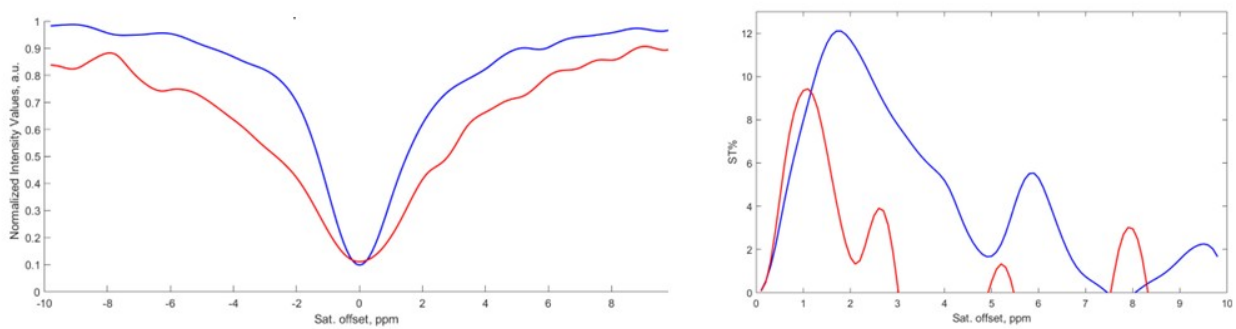


Figure S8: Z- and ST-spectra at $t=0$ (blue line) and $t=24h$ (red line) of c-K2/g-K2 3% *w/v* hydrogels implanted under the skin.

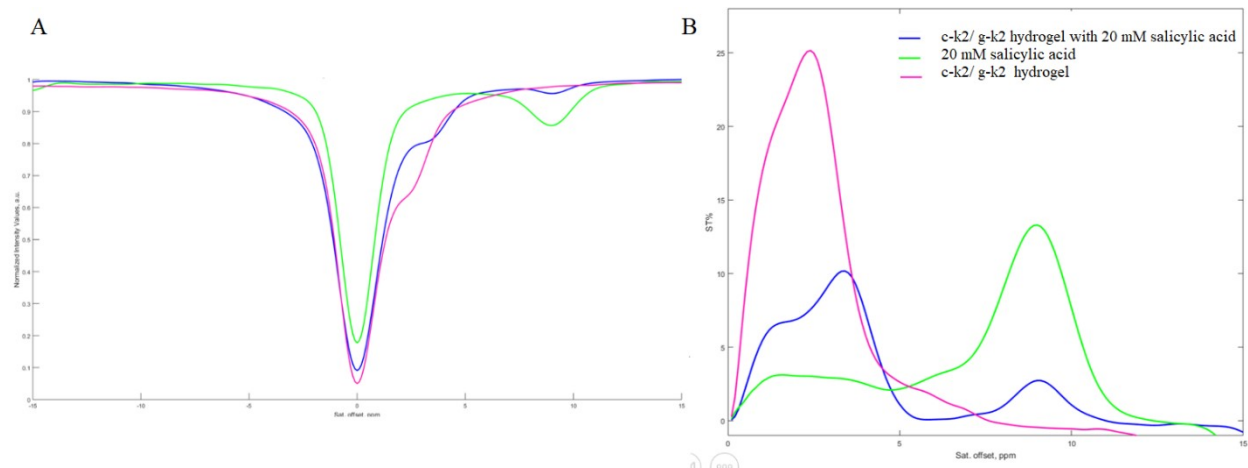


Figure S9: a) Z- and b) ST-spectra of c-K2/g-K2 3% w/v hydrogel in presence of salicylic acid (*blue line*) compared to free salicylic acid (*green line*) or empty hydrogel (*magenta line*).