

Supplementary File

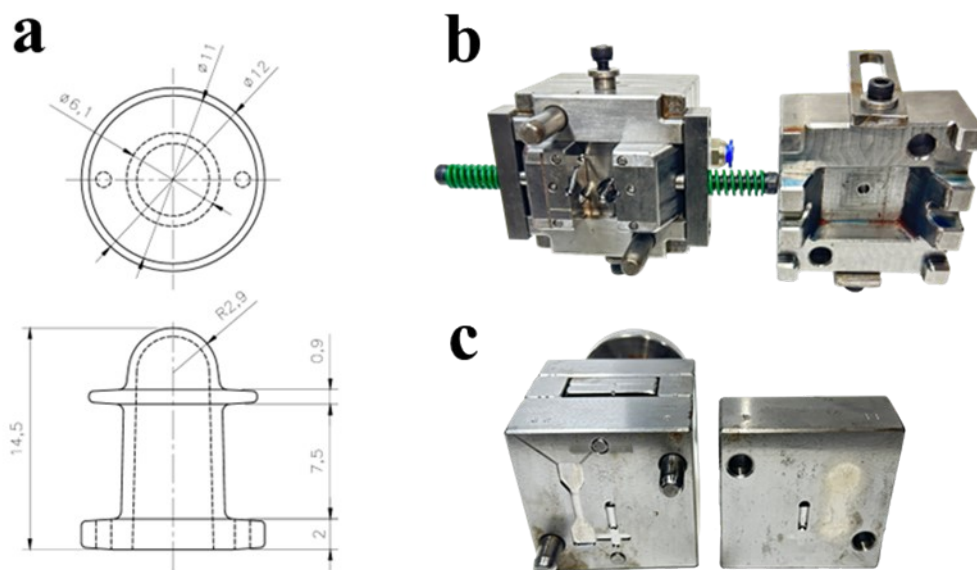


Fig. S1: (a) Drawing of the generic indwelling voice prosthesis, (b) Injection molding tool fabricated for voice prosthesis, (c) Injection molding tool for dog bone specimen.

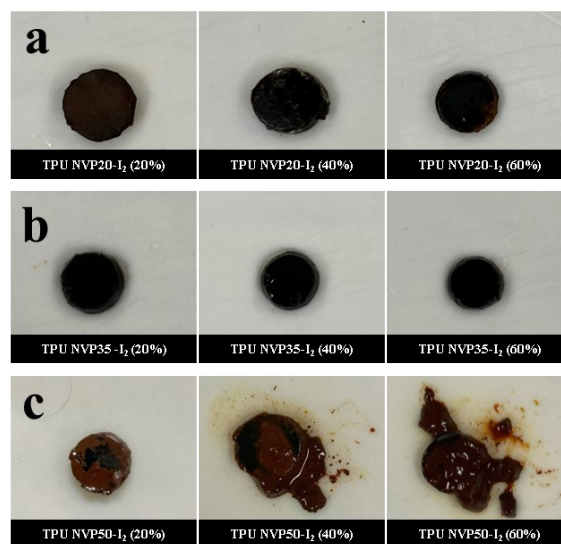


Fig. S2: Mechanical stability study of tercopolymer coated iodine loaded discs with 20%, 40% and 60% coat concentrations for (a) TPU NVP20-I₂ with 20% NVP content (b) TPU NVP 35-I₂ with 35% NVP content and (c) TPU NVP50-I₂ with 50% NVP content after 5 days of aqueous incubation.

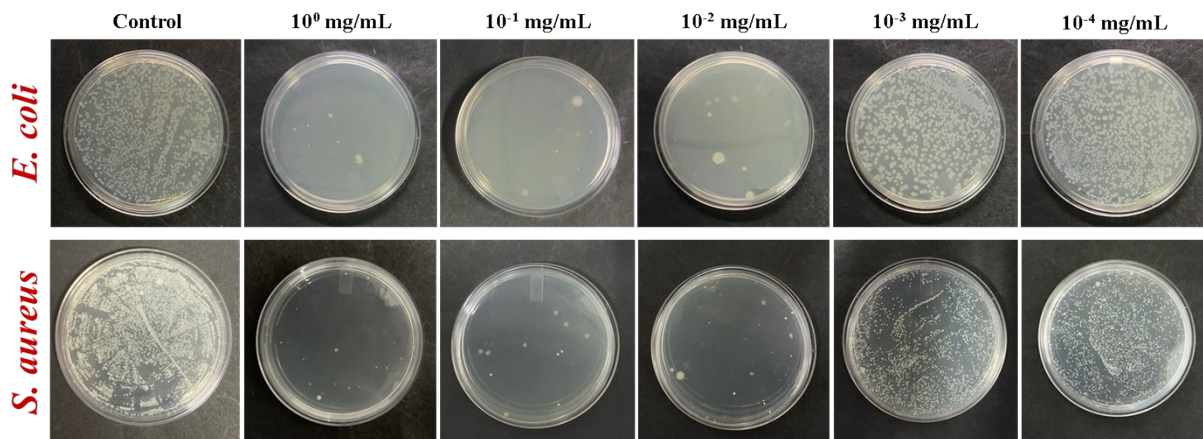


Fig. S3: Evaluation of minimum inhibitory concentration of iodine in PBS (pH 7.4) aqueous solution.

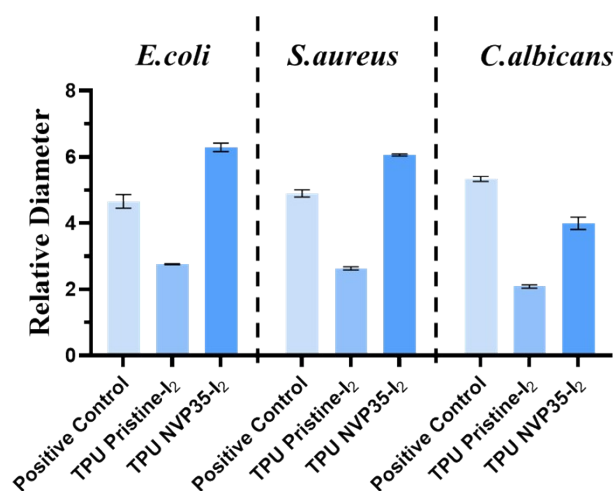


Fig. S4: Comparison of relative diameter of zone of inhibition of iodine loaded TPU Pristine, iodine loaded tercopolymer coated TPU for *E. coli*, *S. aureus* and *C. albicans*.

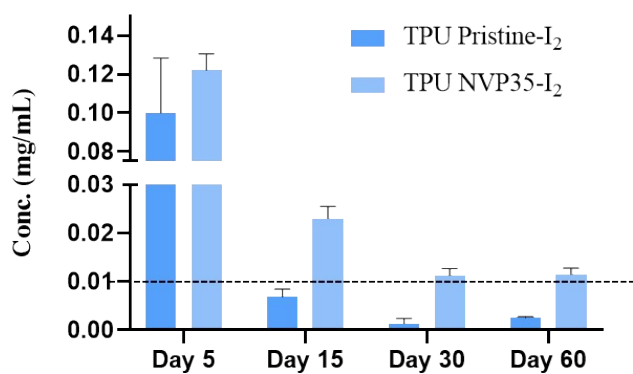


Fig. S5: Concentration of iodine released per 24 hours for iodine loaded TPU Pristine and tercopolymer coated iodine loaded TPU discs.