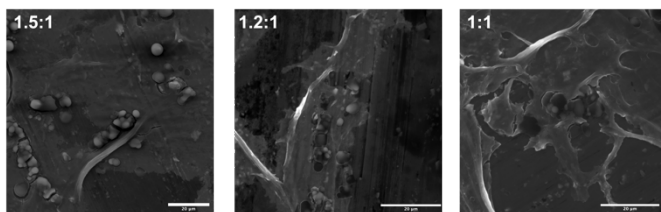
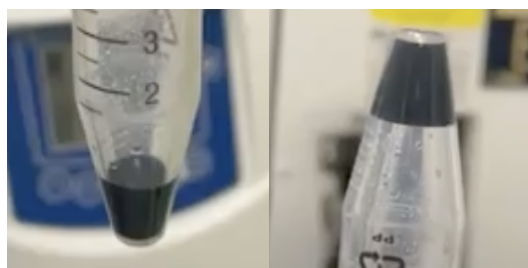


Supplementary Information



SI Figure 1. Representative SEM images of fibres for 1.5:1, 1.2:1, and 1:1 formulations. Scale bars for all images = 20 μm .



A

B

SI Figure 2. Representative images showing final PEDOT:PSS/AA gel. (A) PEDOT:PSS/Acetic acid gel

following batch emulsion and after removing supernatant post-cleaning. (B) When inverted, gel self-supports against gravity. Scale bars for both images = 1 cm.