

1 Supplemental Figures

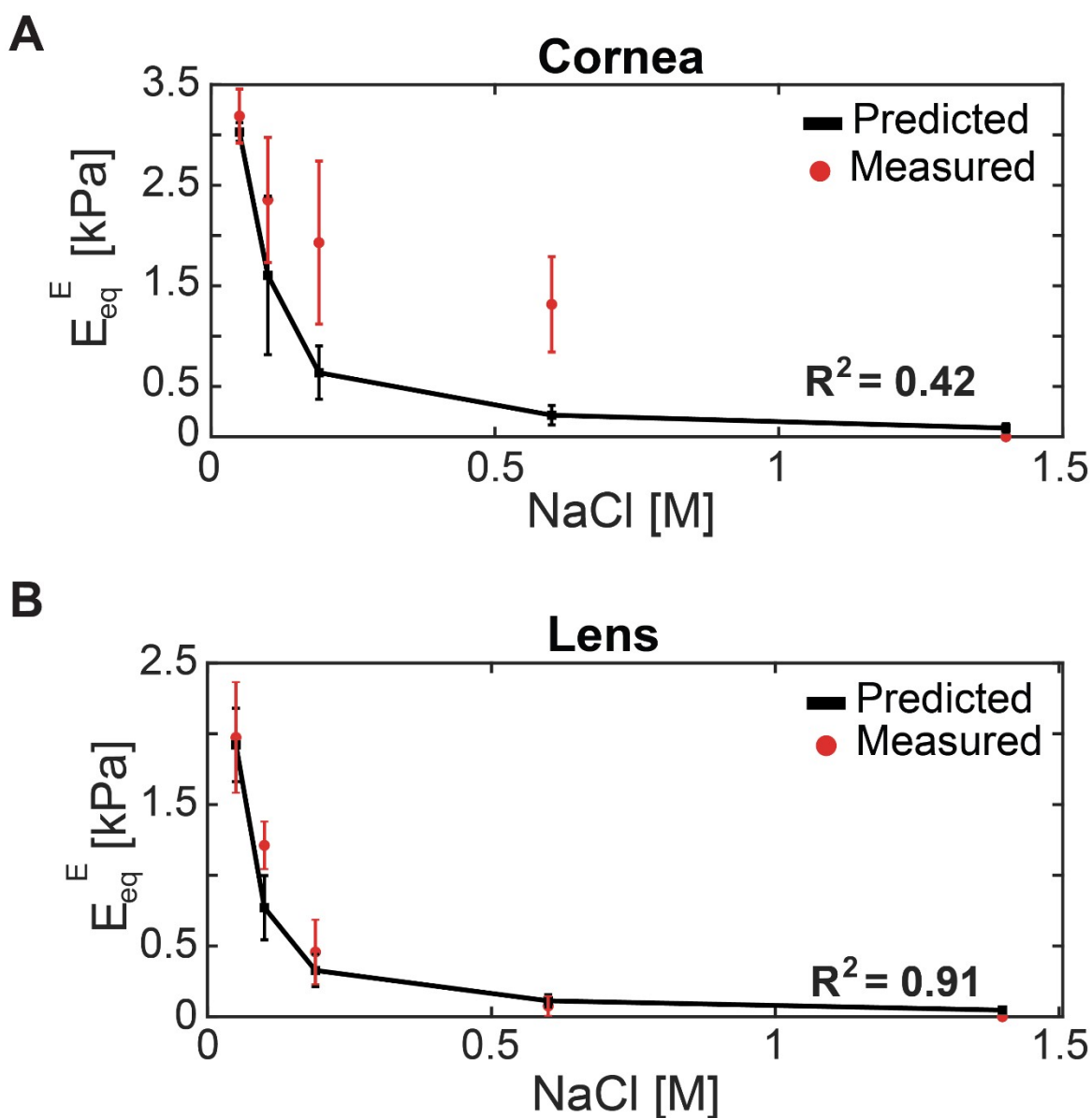


Figure S 1 Measured (red) and predicted (black) electrostatic component (E_{Eq}^E) of the bulk modulus (E_{Eq}) vs bath salinity. **(A)** E_{Eq}^E of 8 mm corneal explants had a poor fit to the Ideal Donnan model prediction curve. **(B)** E_{Eq}^E of lenses closely followed the Ideal Donnan model.

2

3

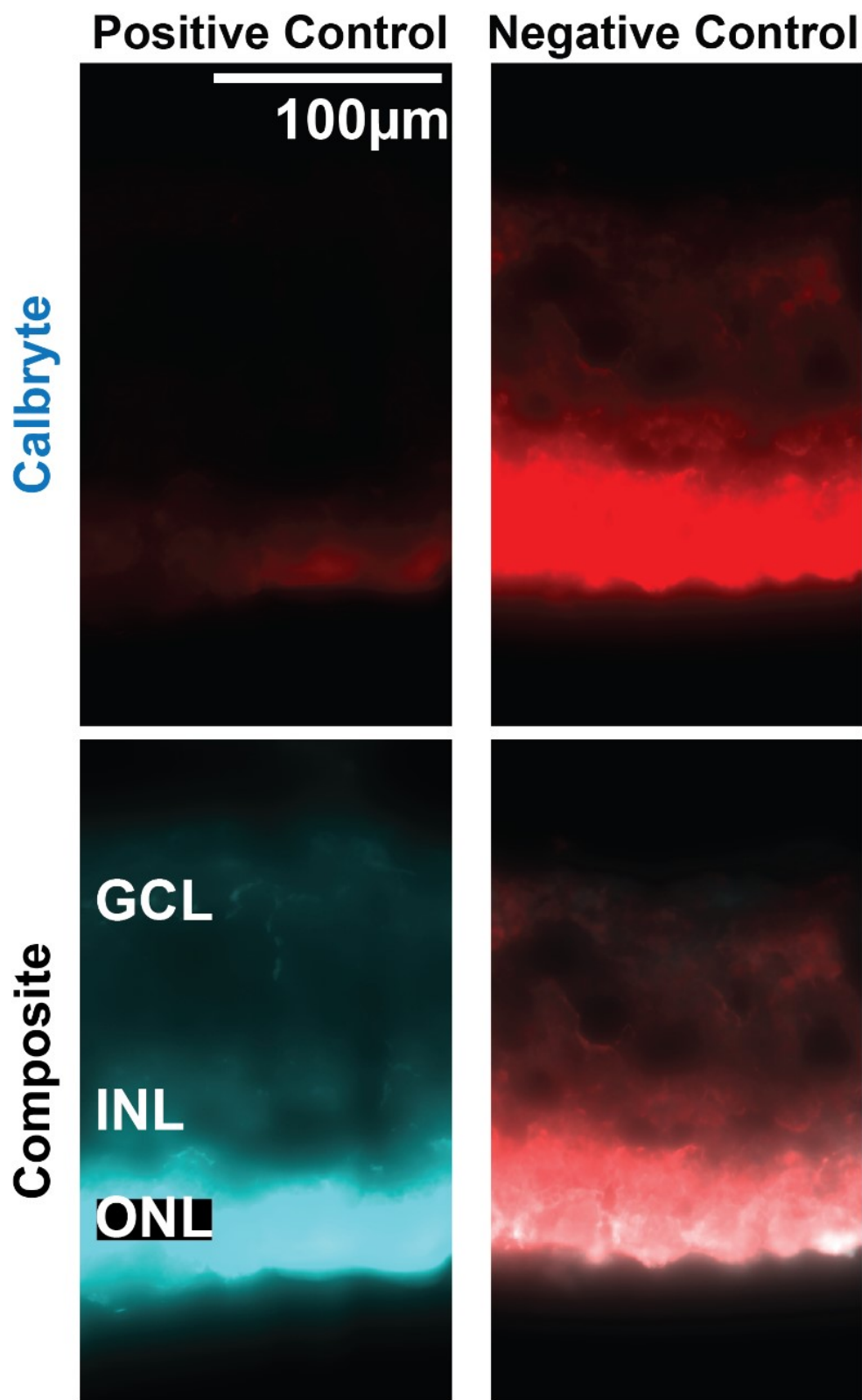


Figure S 2 Representative images of positive and negative control tissues from live/dead assay. Calbryte AM (cyan) and Zombie Red (red) channels shown.