

Supplementary information for

Scalable Fabrication of Porous Membrane Incorporating Human Extracellular Matrix-like Collagen for Guided Bone Regeneration

Authors: Qingyi Wang¹, Feng Zhou^{1,2}, Tiecheng Qiu³, Yiling Liu³, Wenxin Luo¹, Zhanqi Wang^{1,2}, Haiyun Li^{1,2}, E Xiao⁴, Qiang Wei^{3,4*}, Yingying Wu^{1,2*}

Affiliations:

¹State Key Laboratory of Oral Diseases, National Clinical Research Center for Oral Diseases, West China Hospital of Stomatology, Sichuan University, Chengdu, China

²Department of Oral Implantology, West China Hospital of Stomatology, Sichuan University, Chengdu, China

³College of Polymer Science and Engineering, State Key Laboratory of Polymer Materials and Engineering, Sichuan University, Chengdu, China

⁴Hunan Maybio Bio-Pharmaceutical Co., Ltd., Changsha 410000, China

*Address correspondence to: wei@scu.edu.cn (Q.W.); yywdentist@163.com (Y.W.)

Table S1 Primers sequence used for qPCR.

Primer name	Primer Sequence
β -actin F	CATCCGTAAAGACCTCTAGCCAAC
β -actin R	ATGGAGCCACCGATCCACA
Alp F	AACCCAGACACAAGCATTC
Alp R	GCCTTTGAGGTTTTTGGTCA
Runx2 F	GGTACTTCGTCAGCATCTATCAG
Runx2 R	GCTTCCGTCAGCGTCAACAC
Col1 α 1 F	GCTTCACCTACAGCACCCCTTGT
Col1 α 1 R	TGACTGTCTTGCCCCAAGTTC

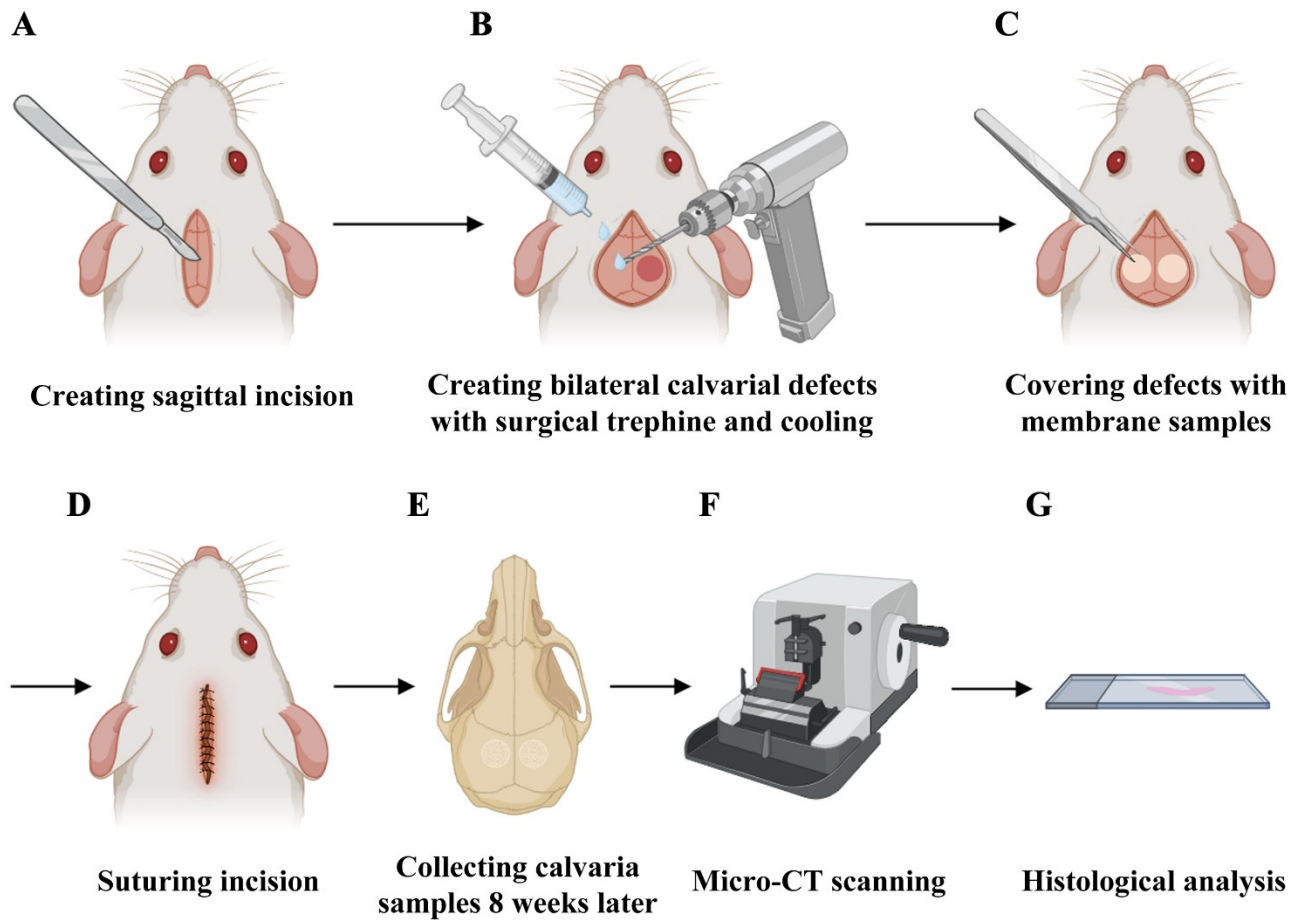


Fig. S1 *In vivo* biological evaluation process. (A) Creating a sagittal incision with a length of 2 cm. (B) Creating bilateral circular calvarial defects 5-mm in diameter with a surgical trephine operated at 1500 rpm and cooled with sterile saline solution drip. (C) Covering calvarial defects with 6-mm in diameter membrane samples. (D) Suturing incision. (E) Euthanizing rats 8 weeks after surgery to collect calvaria samples. (F) Using micro-CT to examine the new bone formation at the circular bone defect location. (G) Making histological sections and staining sections with hematoxylin and eosin (HE) or Masson's trichrome (MT).