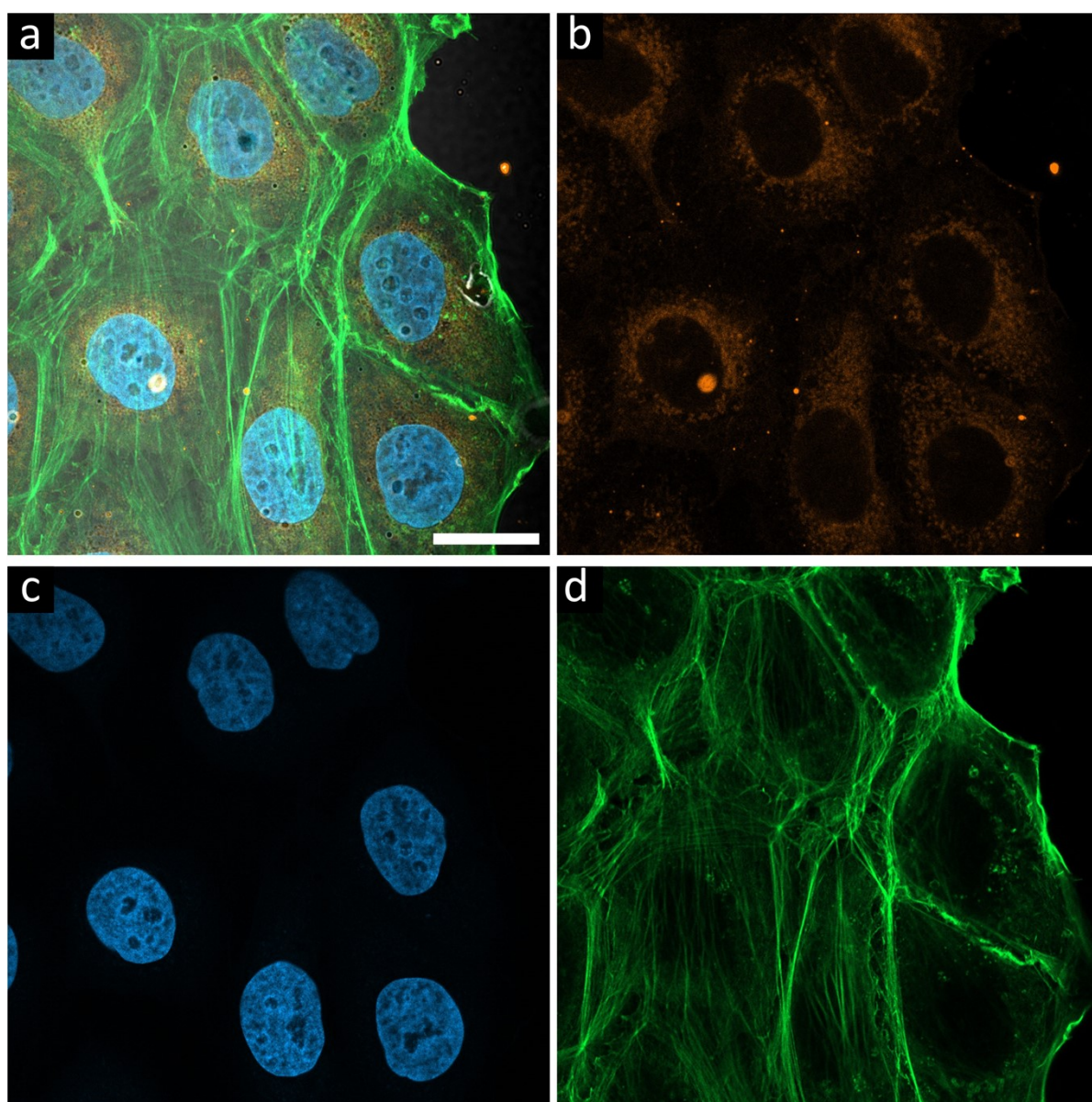


## Supporting Information

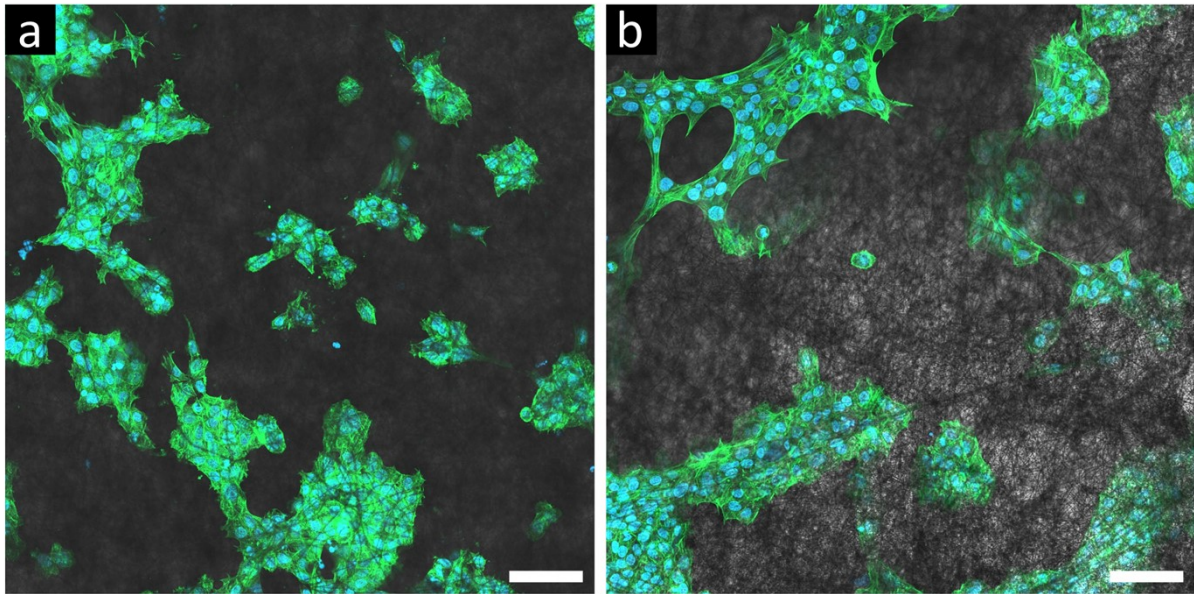
### Controlled therapeutic cholesterol delivery to cells for proliferation and differentiation of keratinocytes

*Krzysztof Berniak, Ahmadreza Moradi, Agata Lichawska-Ciešlar, Weronika Szukala, Jolanta Jura, Urszula Stachewicz\**



**Fig. S1. Accumulation of labeled cholesterol in cells not having direct contact with the scaffold. a** CLSM images of HaCaT cells on glass in the presence of a PI scaffold with added

cholesterol, after 5 days of culture. **b** Labeled cholesterol (orange) stained by CholEsteryl BODIPY; **c** the nuclei were stained with DAPI (blue), and **d** the actin filaments with Alexa Fluor 488 Phalloidin (green). Scale bar = 20  $\mu\text{m}$ .



**Fig. S2. Cell morphology of cells growing on scaffolds.** CLSM images of HaCaT cells on PI fibers (**a**) and on PI+Chol fibers (**b**) after 7 days of culture. The nuclei were stained with DAPI (blue), and the actin filaments with Alexa Fluor 488 Phalloidin (green). Scale bar = 100  $\mu\text{m}$ .