

1 *Supporting Information*

2 **Facile Stoichiometric Interfacial Surface Bonded Cerium Oxide and Graphene Oxide**  
3 **Heterostructure for Efficient Electrochemical Non-Enzymatic Detection of Dopamine**

4  
5 *Annadurai Hemarani<sup>a#</sup>, Vengudusamy Renganathan<sup>b#</sup>, Shen-Ming Chen<sup>a\*</sup>, and C.R.Kao<sup>b\*</sup>*

6 <sup>a</sup>Department of Chemical Engineering and Biotechnology, National Taipei University of  
7 Technology, Taipei 106, Taiwan.

8 <sup>b</sup>Department of Materials Science and Engineering, National Taiwan University, Taipei 10617,  
9 Taiwan.

10  
11 **\*Corresponding authors:**

12 E-mail: *smchen78@ms15.hinet.net, smchen0708@gmail.com* (Shen-Ming Chen),  
13 *crkao@ntu.edu.tw* (C. R. Kao).

14 <sup>#</sup>These authors contributed equally to this work.

15

16

17

18

19

20

21

22

23

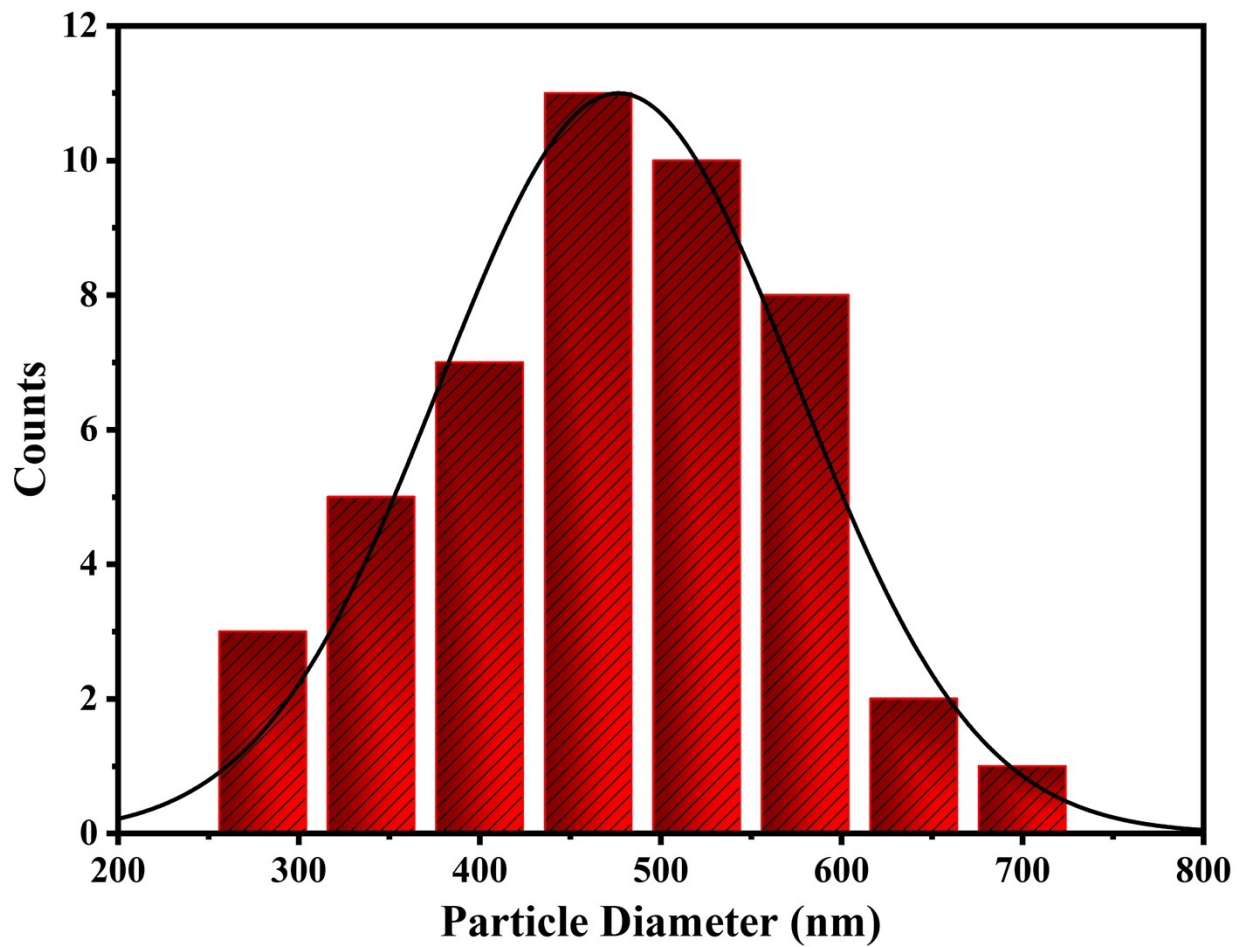
24

25

26

27

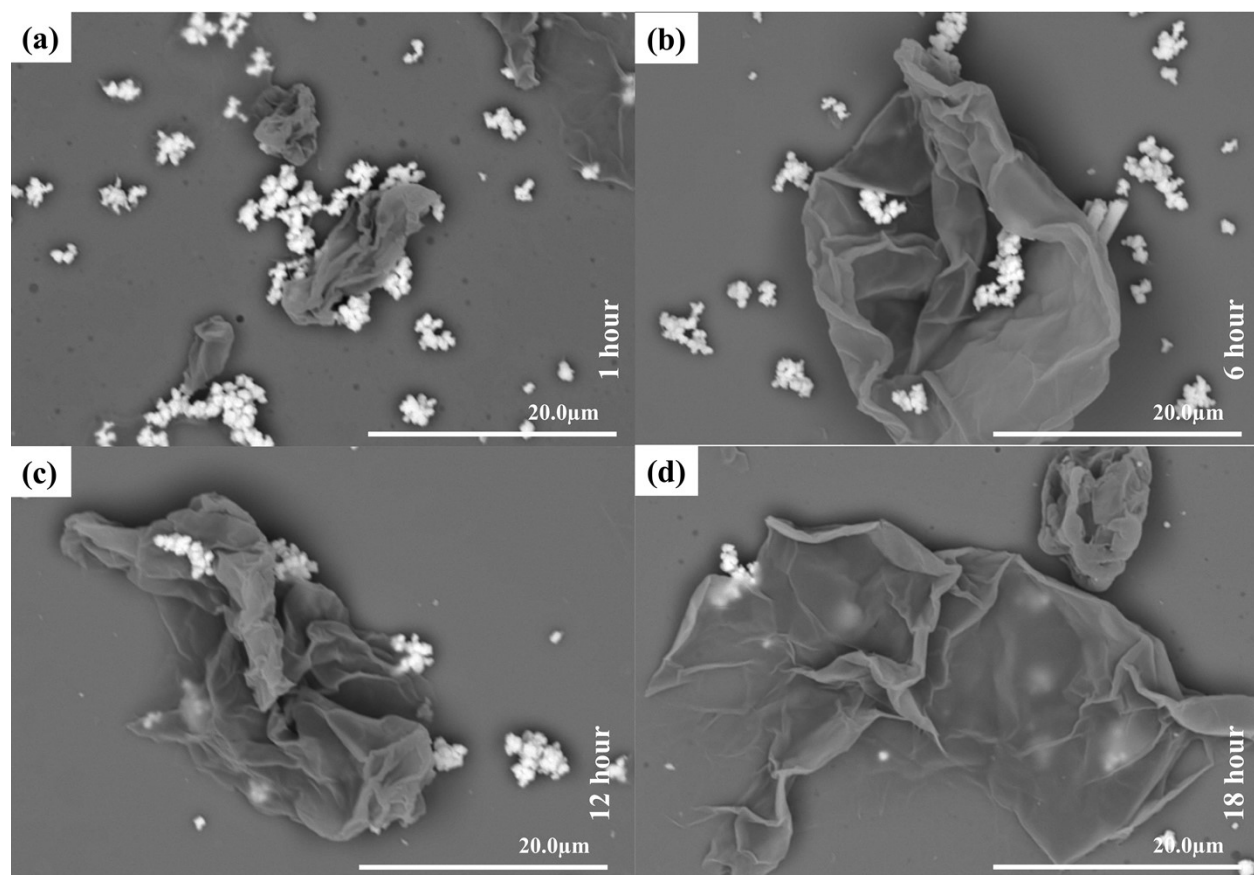
28



29

30 **Figure S1:** Corresponding histogram of average particle diameter of nanohybrid G-CeONS  
31 composites from SEM analysis.

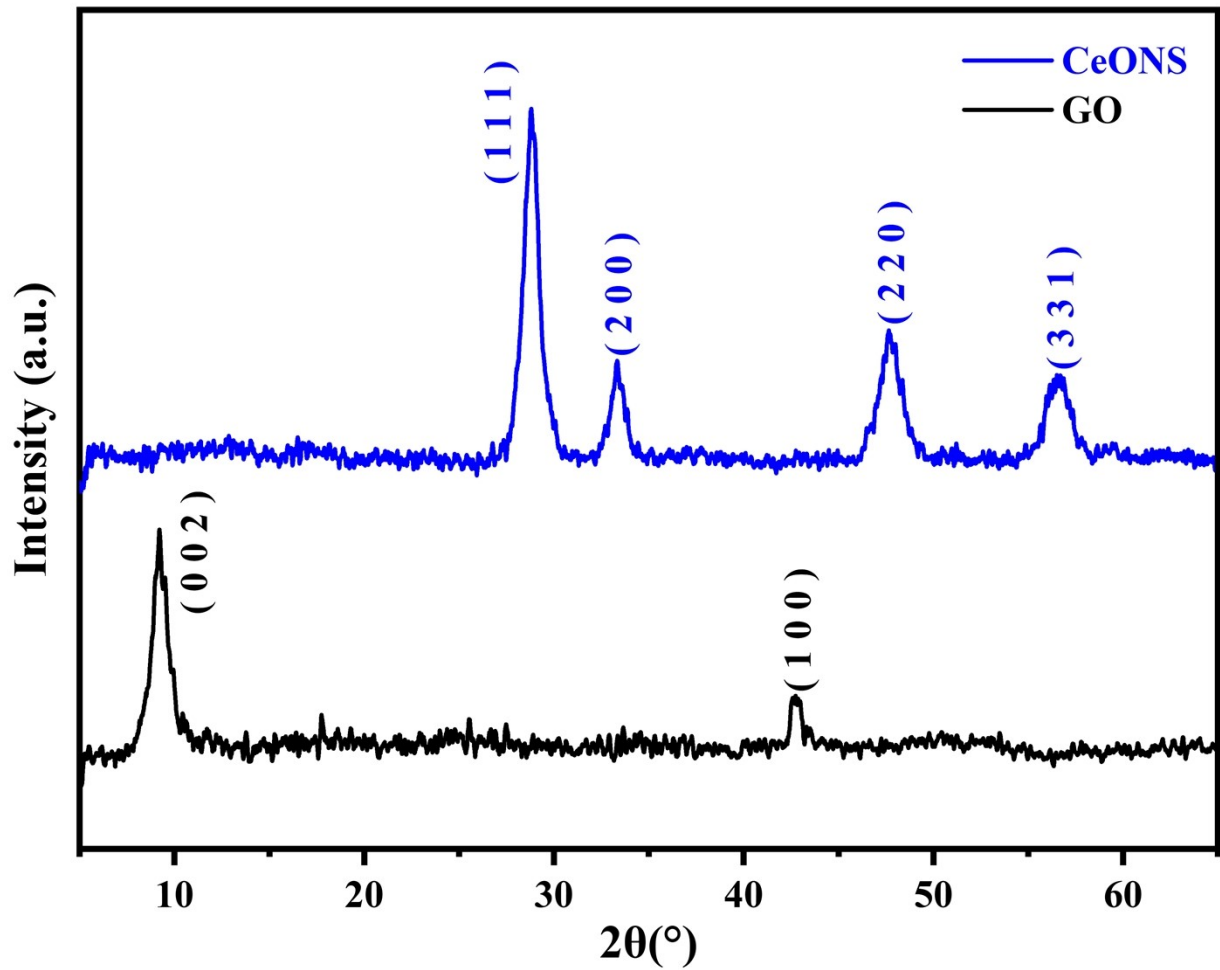
32



33

34 **Figure S2:** SEM images of the various time interval G-CeONS composite formations, 1 hour (a),  
35 6 hours (b), 12 hours (c), and 18 hours (d).

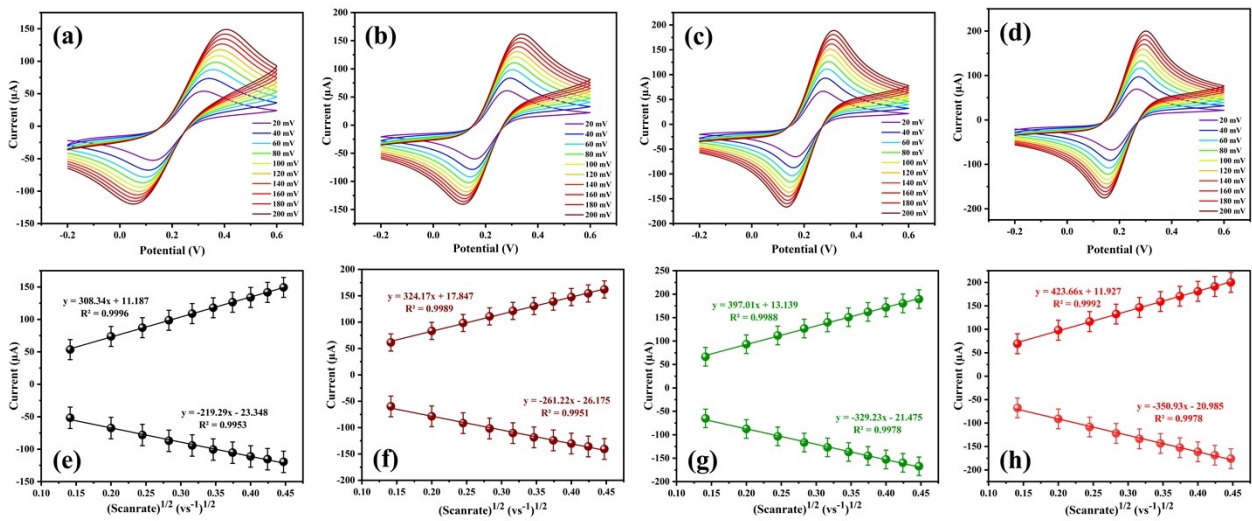
36



37

38 **Figure S3:** XRD pattern of as prepared CeONS (blue), and paper-like GO layer (black).

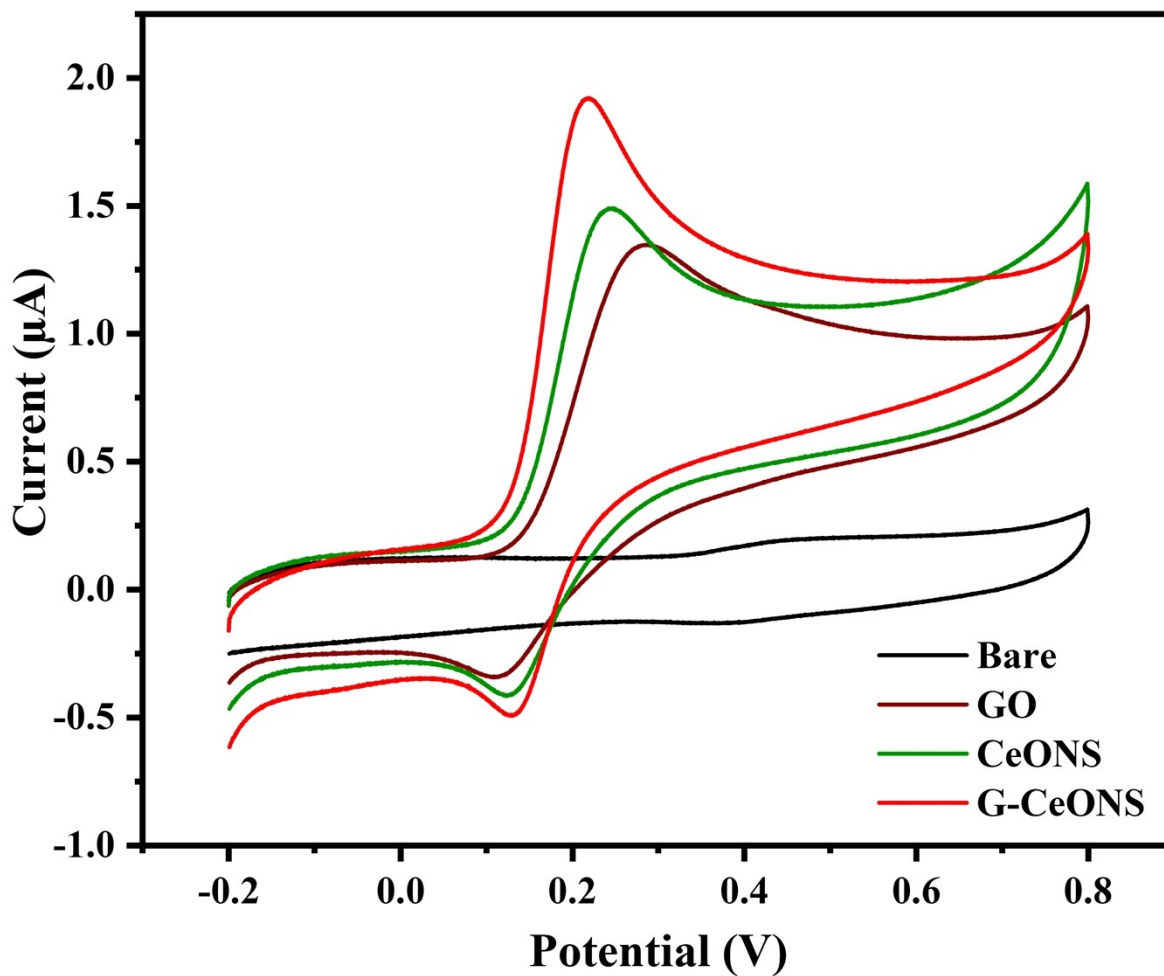
39



40

41 **Figure S4:** The CV response of bare GCE (a), GO/GCE (b), CeONS/GCE (c), and G-  
42 CeONS/GCE (d) in FCS at varying scan rates from 20 to 200 mV/s with 20 mV/s intervals. The  
43 corresponding linear plot of  $I_{pa}$  vs  $v^{1/2}$  for bare GCE (e), GO/GCE (f), CeONS/GCE (g), and G-  
44 CeONS/GCE (h) in FCS.

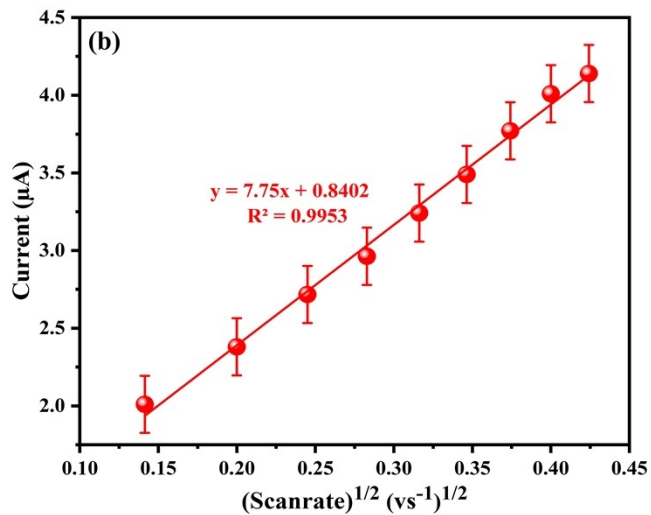
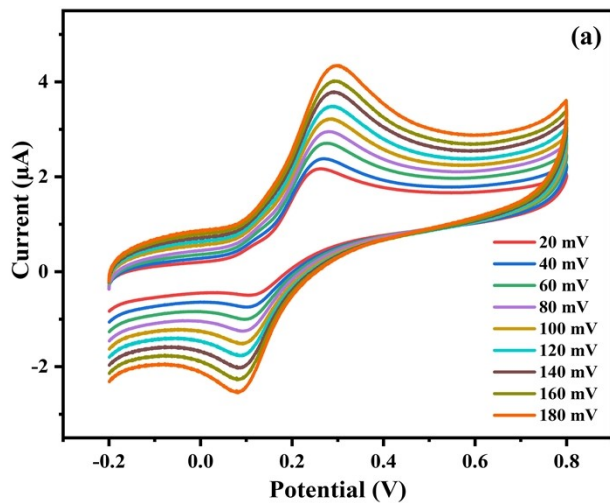
45



46

47 **Figure S5:** CV responses of Bare GCE (black), GO/GCE (brown), CeONS/GCE (green), and G-  
48 CeONS/GCE (red) in presence of 50  $\mu$ M of DA in PBS 7 at the scan rate of 50 mV/s.

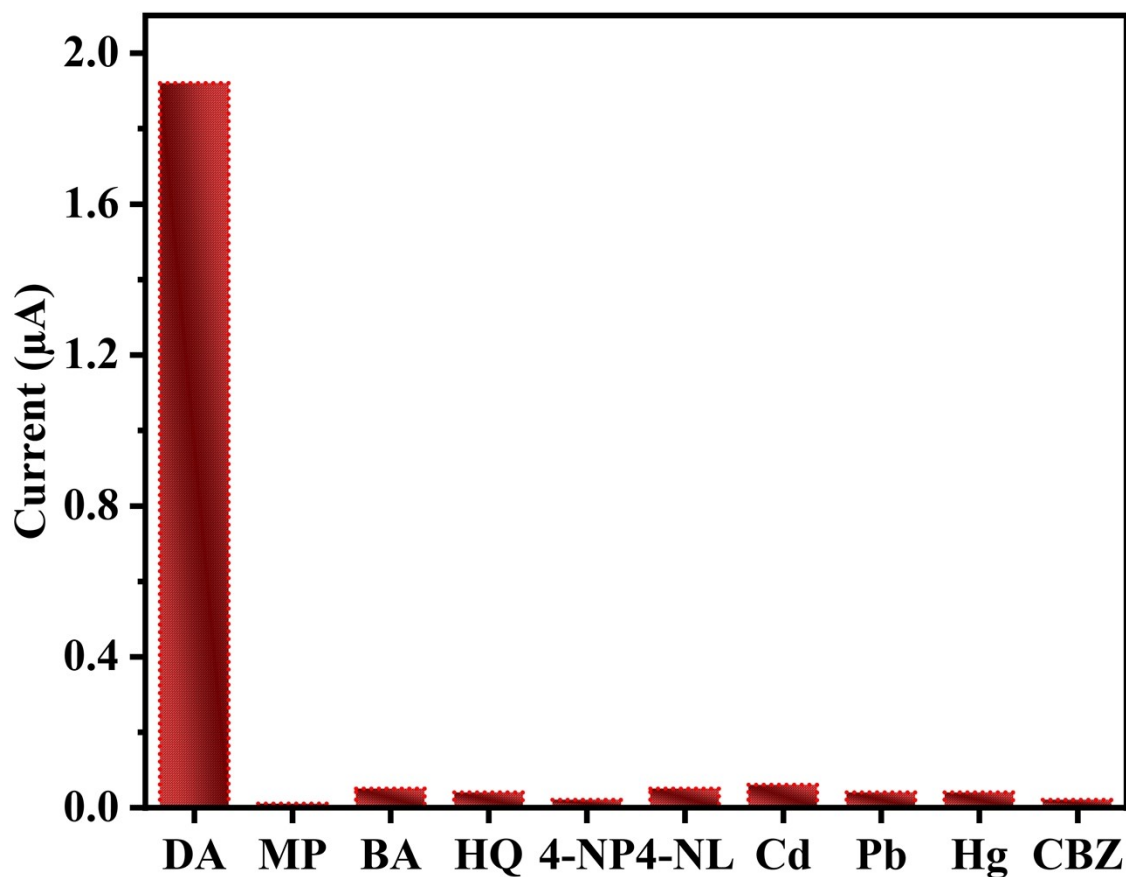
49



50

51 **Figure S6:** CV response of G-CeONS/GCE in presence of 50 μM of DA in PBS 7 at the varying  
 52 scan rates from 20 to 180 mV/s with 20 mV/s intervals (a), the corresponding linear plot of  $I_{pa}$  vs  
 53  $v^{1/2}$  (b).

54



55

56 **Figure S7:** Corresponding bar diagram of CV responses of G-CeONS in the presence of positive  
57 and negative analytes in the PBS 7 at the scan rate of 50 mV/s.