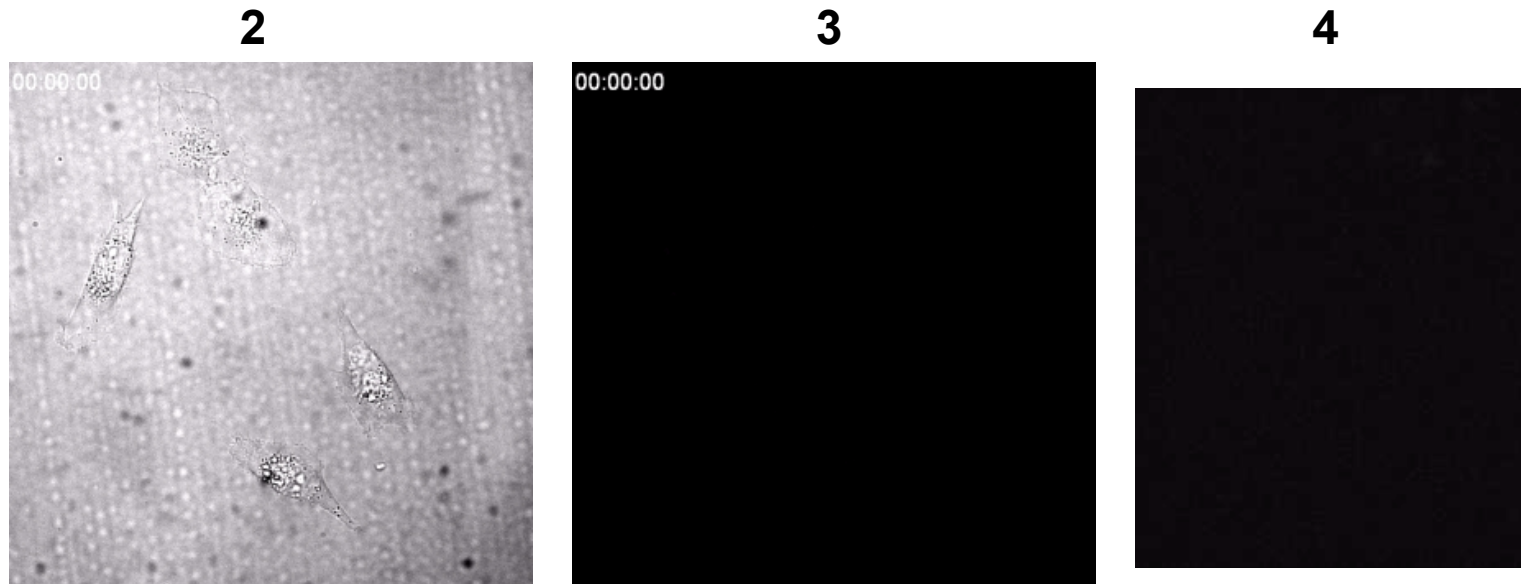


SI Movies 1. Z-Stack of a single MDA-MB 231 cell (0.1 micron) showing intracellular staining pattern of **2**.



SI Movies 2 -4. Widefield microscopy imaging of the uptake of **3** over 2 h in live MDA-MB 231 cells with images acquired every 10 min. (A) Brightfield images; (B) Fluorescence images excit 435 (40) nm; (C) Expansion of single cell from Move B.



SI Movie 5. Z-Stack of a single MDA-MB 231 cell (0.1 micron) showing intracellular staining pattern of **3**.