

Support Information

Engineered Collagen/PLLA Composite Fillers to Induce Rapid and Long-term Collagen Regeneration

Shuhua Chang^{a,c}, Miaoran Zhao^a, Wenxia Gao^{b*}, Jun Cao^a, Bin He^{a*}

^a National Engineering Research center for Biomaterials, College of Biomedical Engineering, Sichuan University, Chengdu 610064, China

^b School of Pharmacy, Chengdu University, Chengdu 610106, China

^c Guanxi Xiaofenzi Medical Science & Technology Company, Yulin 537002, China

* The E-mails of corresponding authors: gaowenxia@cdu.edu.cn (Wenxia Gao); bhe@scu.edu.cn (Bin He)

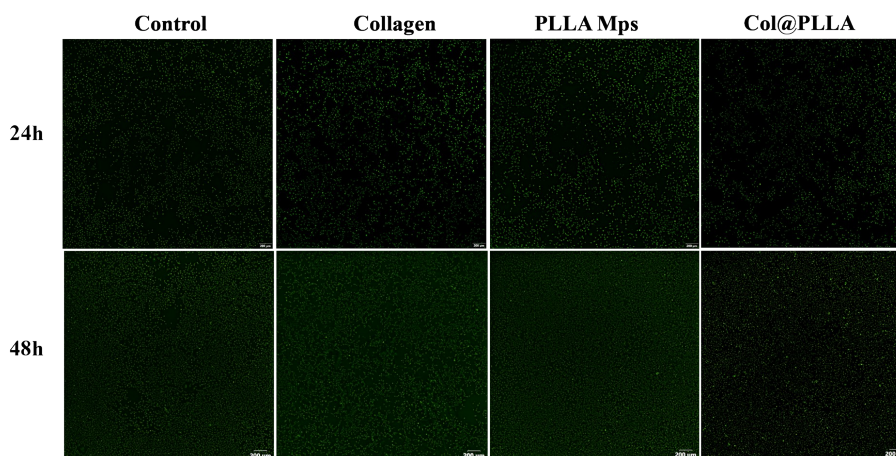


Figure S1. The compatibility study of the three fillers, representative AO/EB dye images (Ex=488nm, Em=515nm).

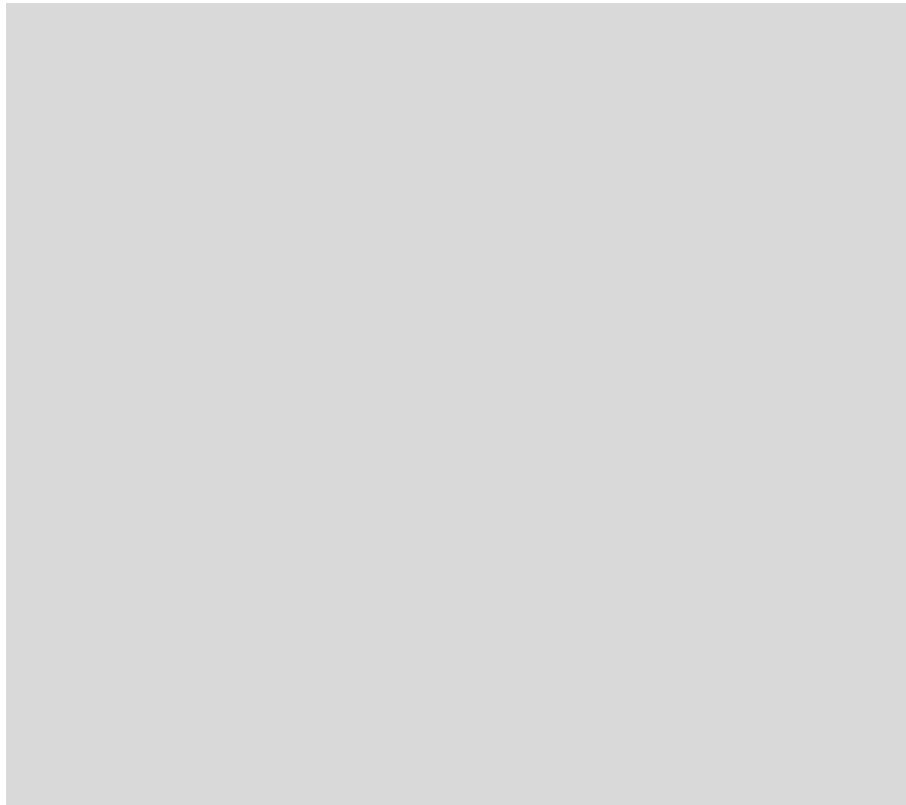


Figure S2. The compatibility study of the three fillers, the quantitative analysis of fluorescence images.

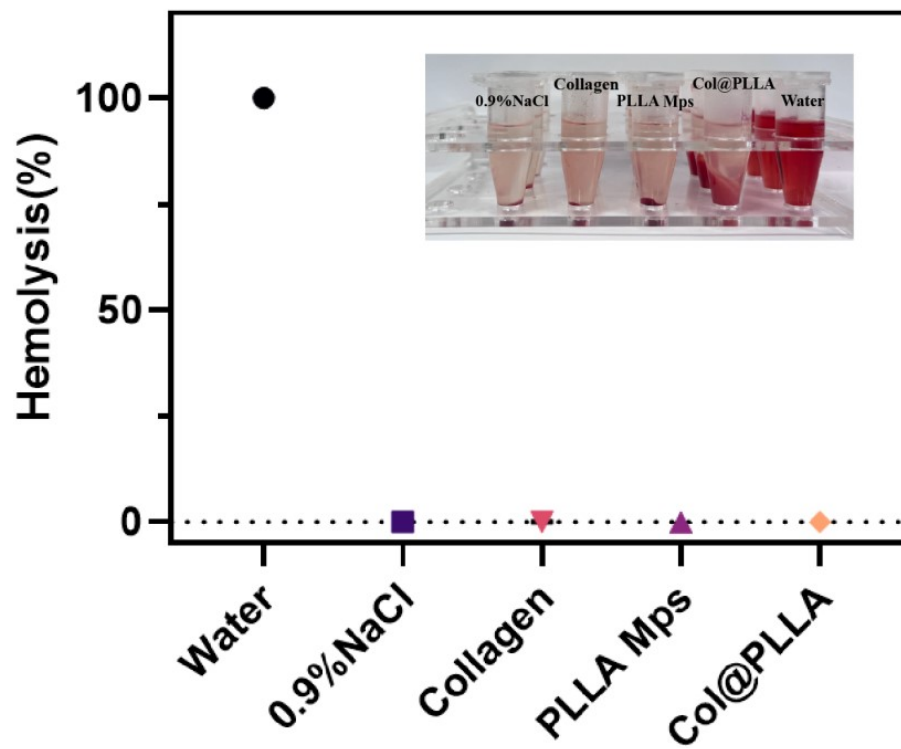


Figure S3. The hemocompatibility of the three fillers.

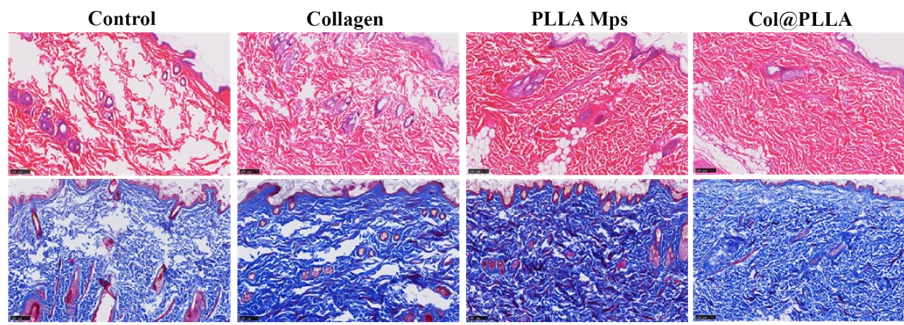


Figure S4. The changes of collagen content in full-thickness skin in 6 months post-injection.

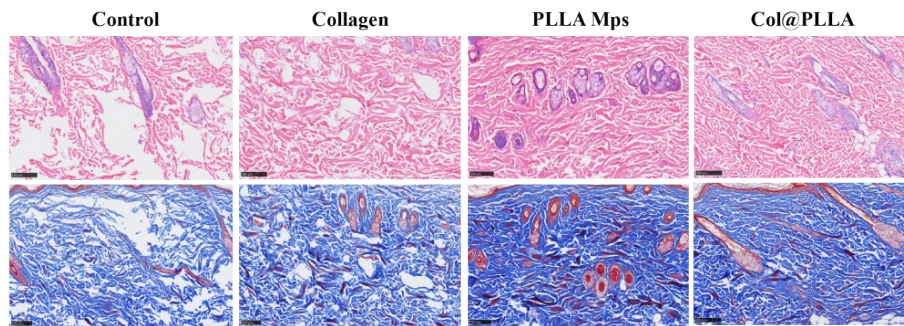


Figure S5. The changes of collagen content in full-thickness skin in 8 months post-injection.