

Electronic Supplementary Information

Fermi-Dirac statistics in correlation between electronic entropy and spatial
confinement of liquid crystal-perovskite nanohybrids

Deejan Debnath,^a Prithish Halder,^b Barnali Saha,^c Himadri Acharya^a
and Sujit Kumar Ghosh^{c*}

^aDepartment of Chemistry, Assam University, Silchar-788011, India

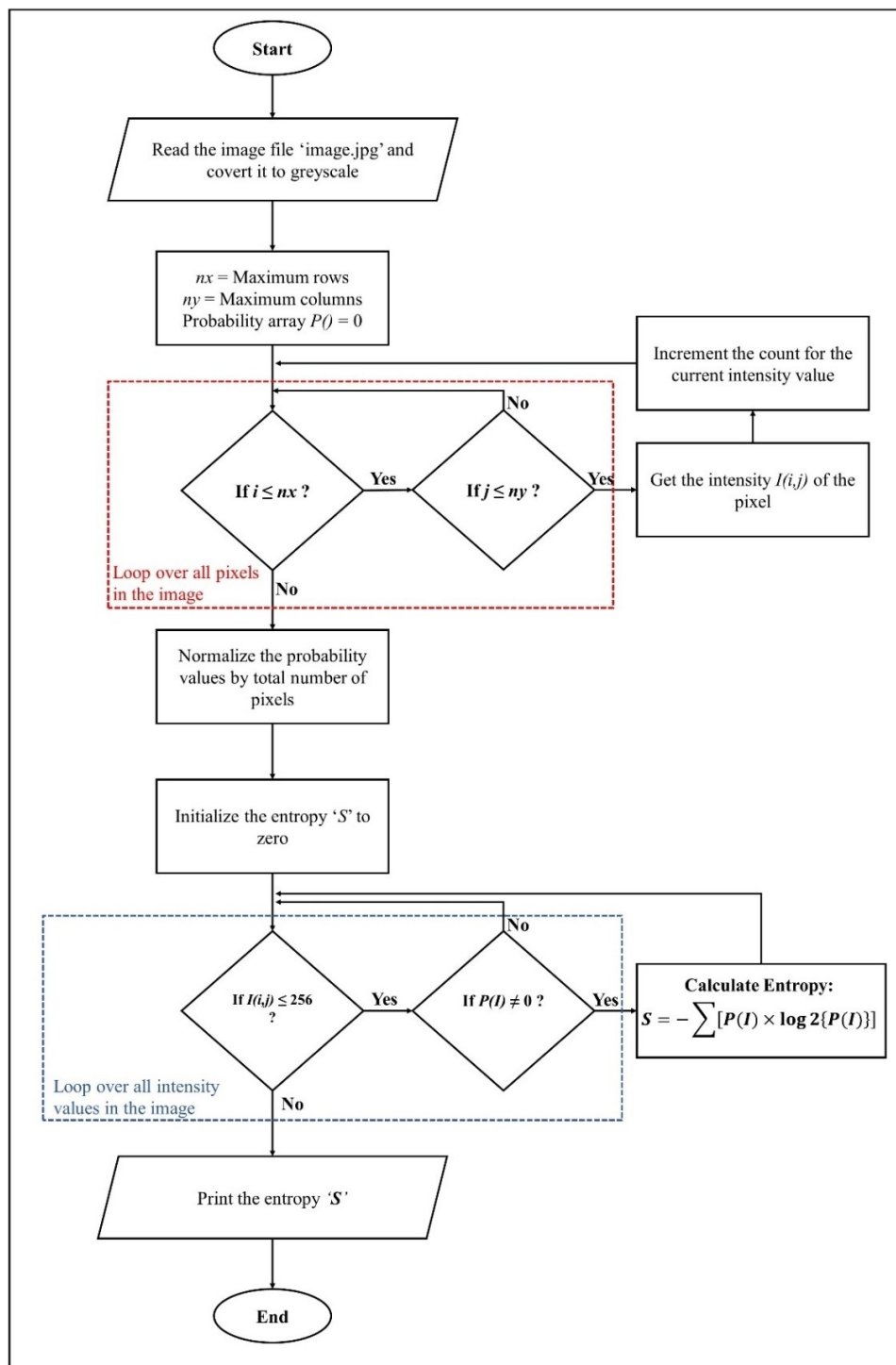
^bTheoretical Astrophysics Group, Indian Institute of Astrophysics, Bengaluru-560034, India

^cPhysical Chemistry Section, Department of Chemistry, Jadavpur University,
Kolkata-700032, India

E-mail: skghosh.chemistry@jadavpuruniversity.in; Tel: +91-33-24572770

ESI 1. Python code for the calculation of electronic entropy

A flowchart for the calculation of electronic entropy using Python code has been shown in Scheme S1.



Scheme S1. Flow diagram of the algorithm to calculate the total entropy of an image.