

Electronic Supplementary Information for

“Tailoring the optical properties of rubrene films through epitaxy-induced amorphous-to-crystal transition”

*Silvia Trabattoni, Luisa Raimondo, * Alessandro Minotto, * Angelo Monguzzi, Francesco
Meinardi, Adele Sassella*

Department of Materials Science, University of Milano-Bicocca, via Cozzi 55, I-20125, Milano,
Italy

* luisa.raimondo@unimib.it; alessandro.minotto@unimib.it

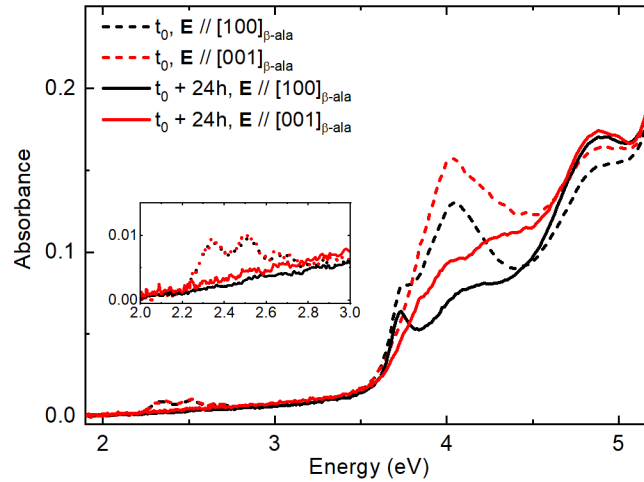


Fig. S1 Absorption spectra collected at normal incidence with polarized light on the same film reported in Figure 1a (3 nm, $t_s = 24\text{h}$). The spectra were collected after few hours from extraction (t_0 , dotted lines) and after 24h ($t_0+24\text{h}$, full lines).

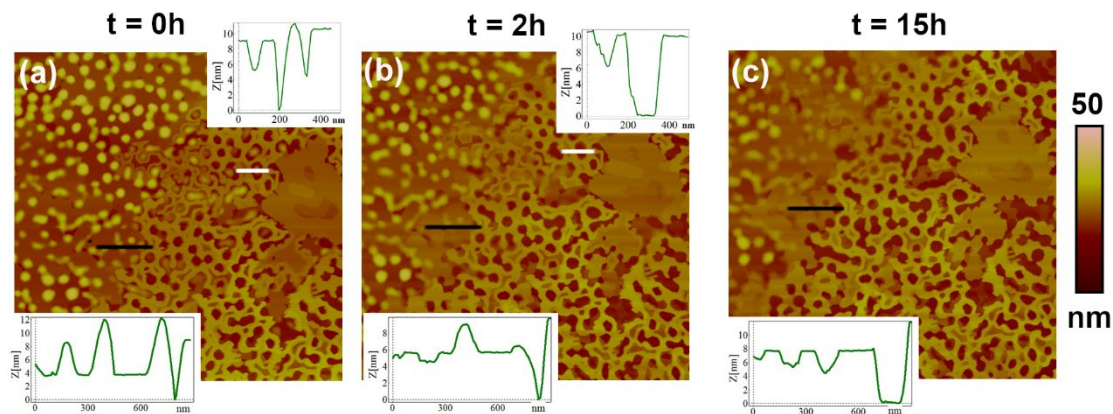


Fig. S2 AFM height images of the same (5×5) μm^2 area acquired after different time of air exposure: as extracted ($t = 0\text{ h}$) (a), $t = 2\text{ h}$ (b), and $t = 15\text{ h}$ (c). The image at $t = 0\text{ h}$ is the same reported in Figure 2. The section profiles have been reported as measured along the white and black lines.