

Electronic Supplementary Information (ESI)

Table S1. Elemental composition of graphitic samples by XPS analysis

Sample Code	Elemental Composition (at %)		
	C	O	N
NG-NCD250	82.02	6.9	11.08
NG-LCD250	86.79	6.2	7.01
NG-HCD250	90.2	6	3.8
NG-HCD270	90.55	6.65	3.8

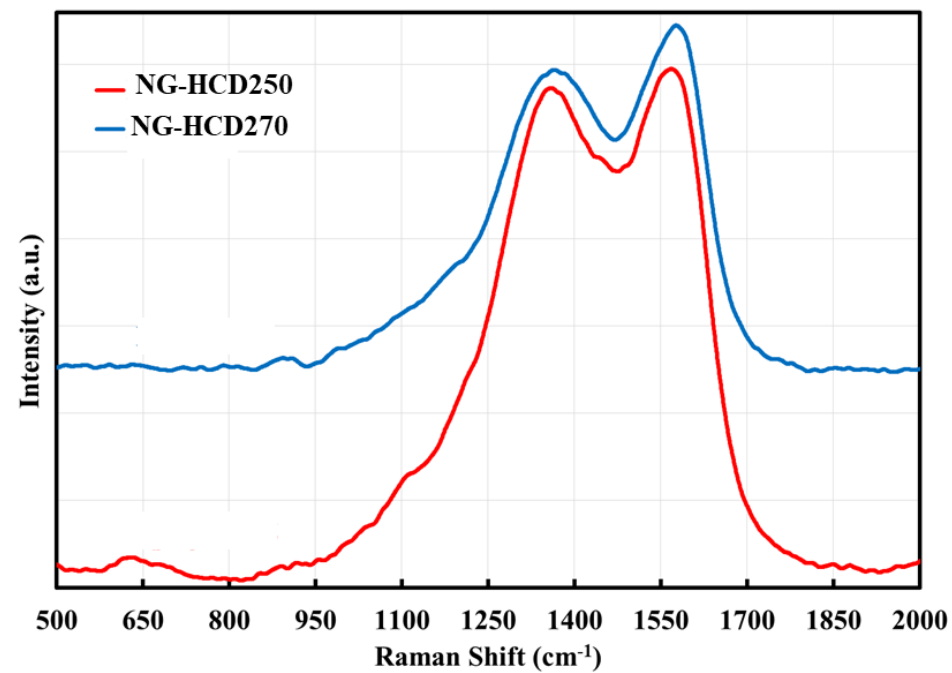
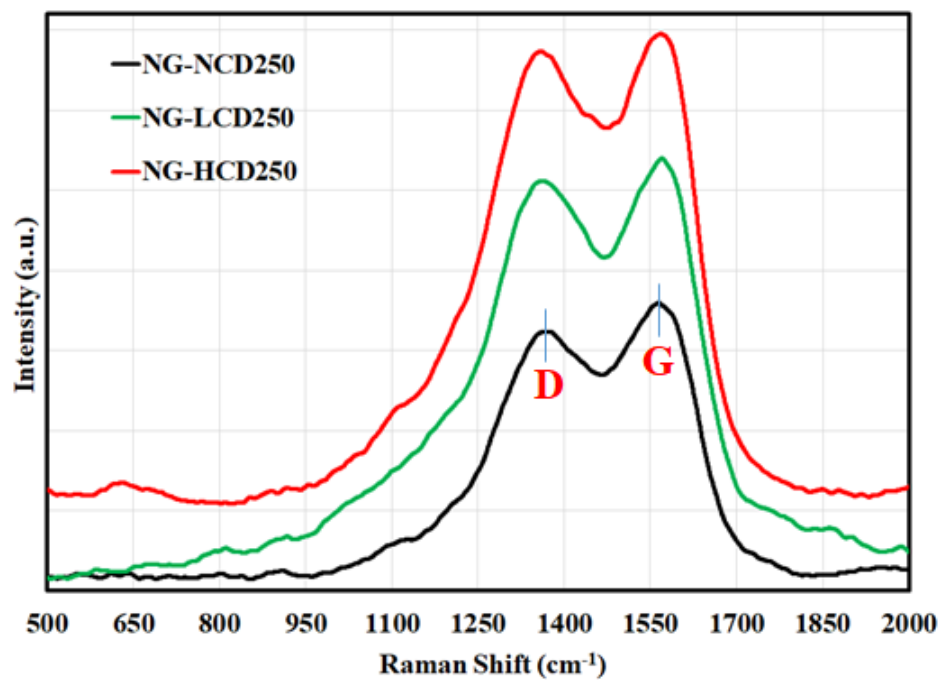


Figure S1. Raman Spectra of synthesized graphitic samples at (a) variant CTAB doses and fixed hydrothermal temperature of 250 °C, (b) variant hydrothermal temperatures and fixed highest CTAB dose

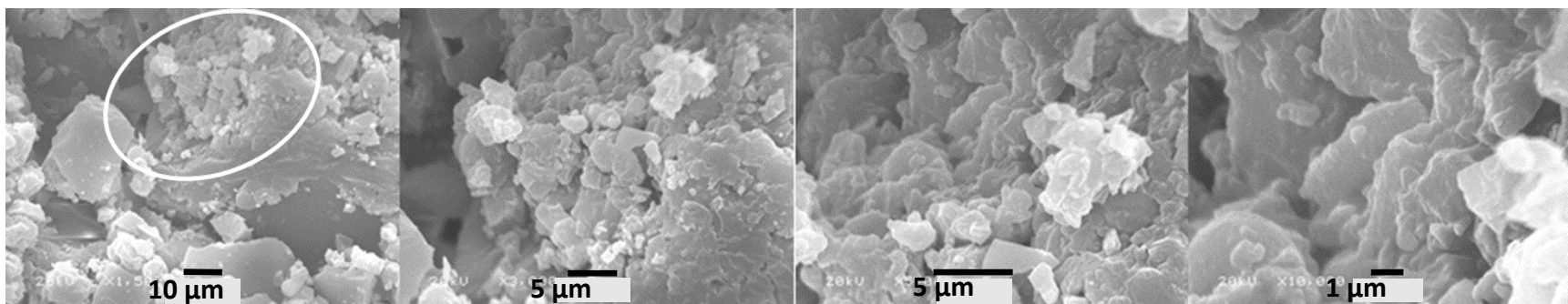


Figure S2. SEM micrographs of NG-HCD250 captured gradually from low to high magnifications

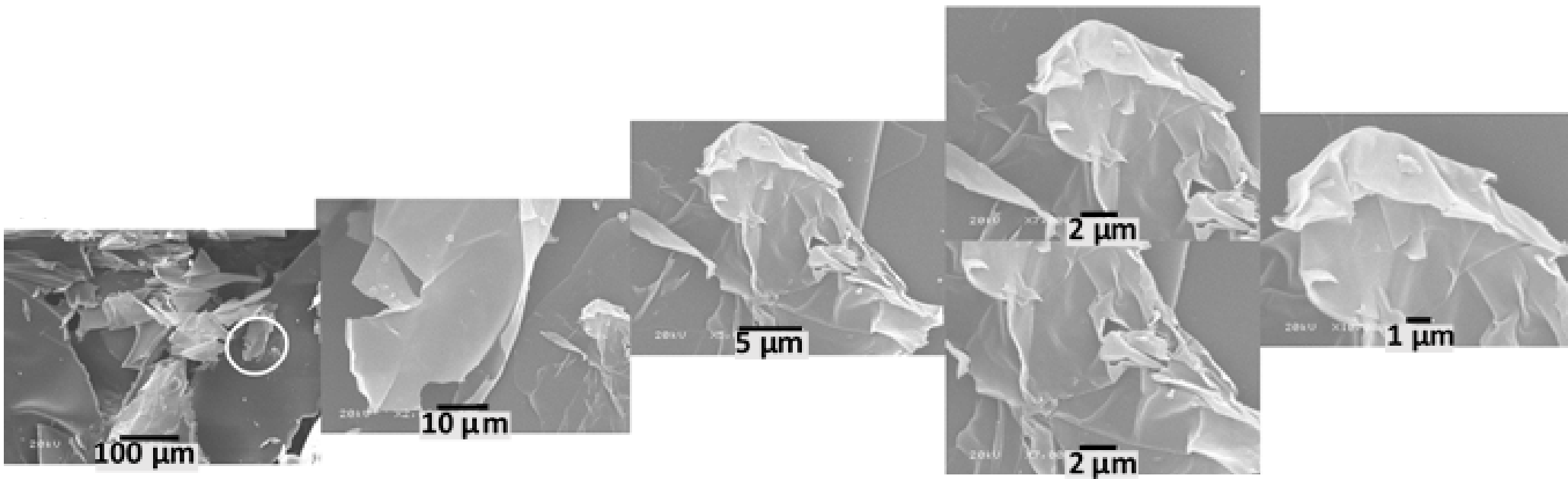


Figure S3. SEM micrographs of NG-HCD270 captured gradually from low to high magnifications

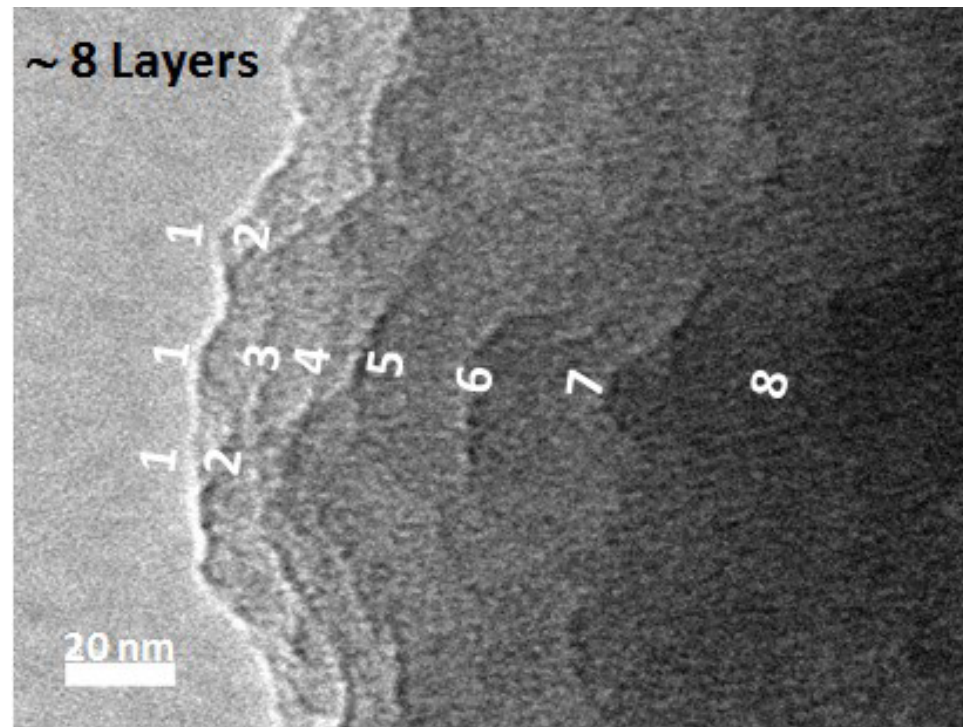
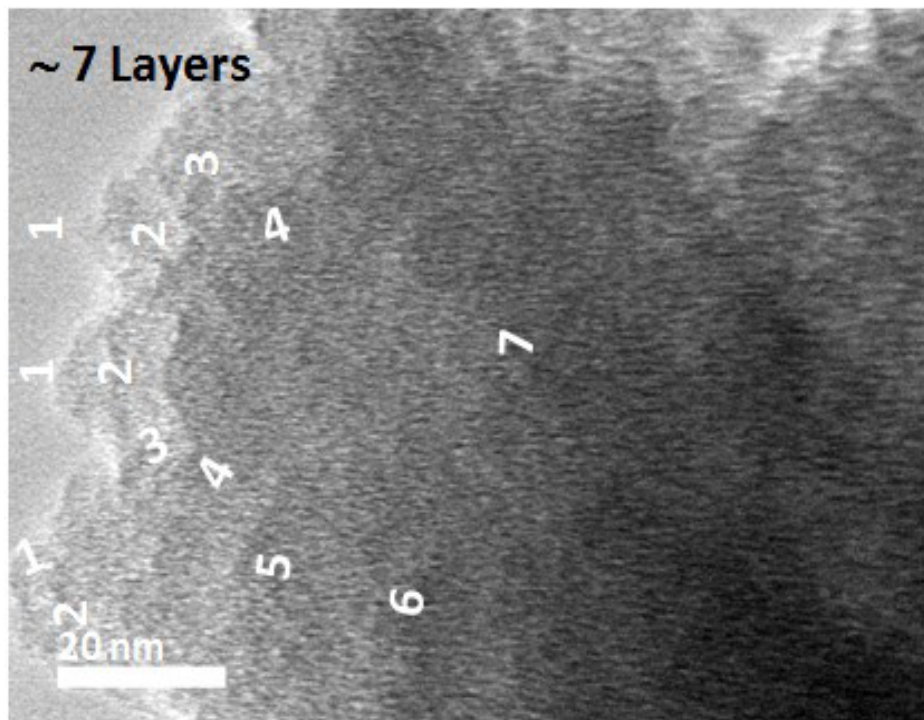


Figure S4. High magnification HR-TEM micrographs of NG-HCD270 at various regions within the sample