

Enhanced electrochemical performance by alumina-coated graphite anodes via spray coating

Pin-Yi Zhao ^{a,b,c,*}, Kwang-Leong Choy ^{b,c,*}, Yongyi Song ^a, Shudong Zhang ^a, Rui Ma ^a

^a SINOPEC (Dalian) Research Institute of Petroleum and Petrochemicals Co., Ltd., 116045,
China

^b Institute for Materials Discovery, University College London, WC1E 7JE, United Kingdom

^c Department of Chemistry, University College London, WC1H 0AJ, United Kingdom

*Corresponding author. E-mail address: pinyi.zhao.18@ucl.ac.uk ; k.choy@ucl.ac.uk

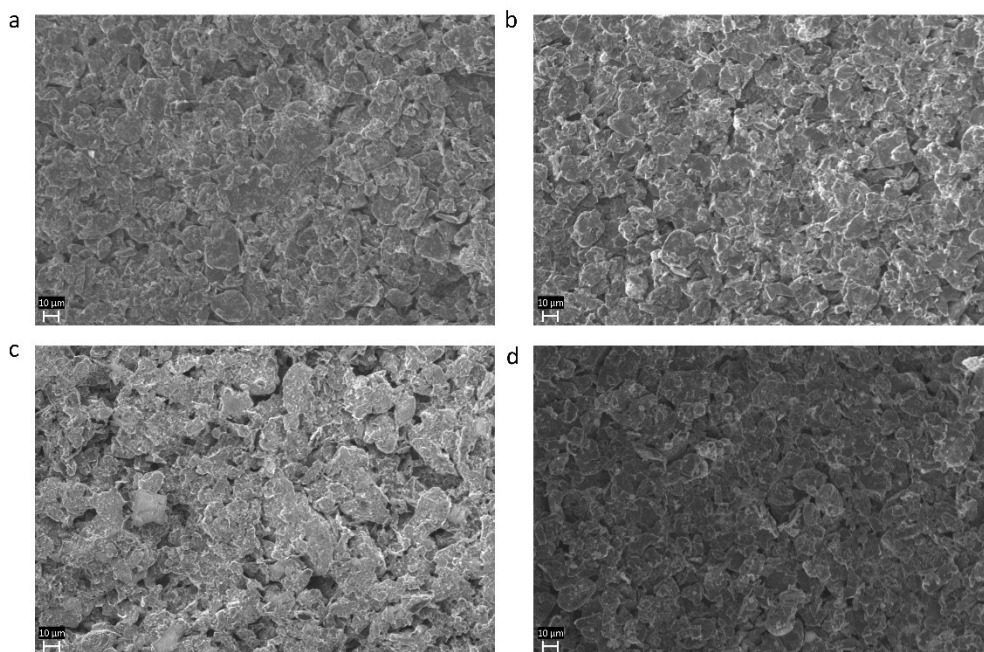


Figure S1 Scanning electron microscopy (SEM) of G0, G1, G4, and G7, respectively: (a) G0, (b) G1, (c) G4, and (d) G7