

Supplementary information

for

Convergence in biomineralization patterns across animal eggshells

Table of Contents

Supplementary figures:

Supplementary figure 1

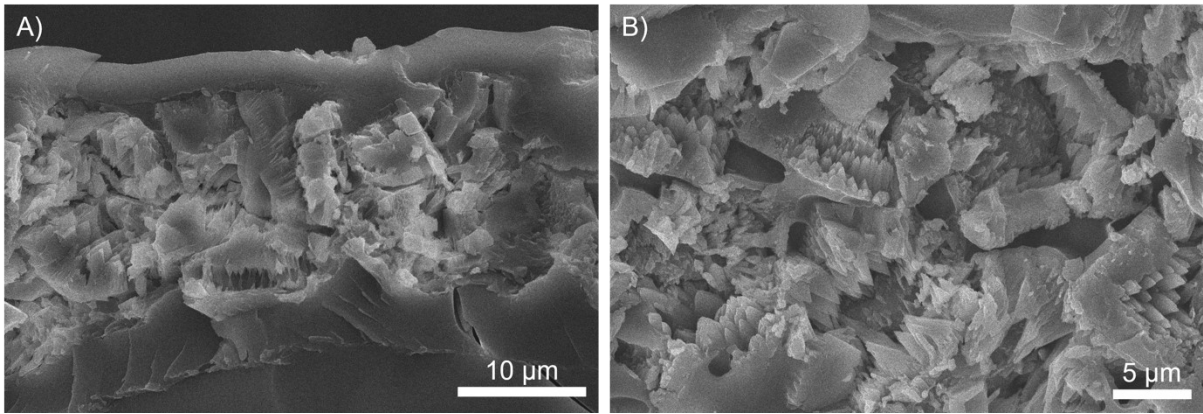
Supplementary figure 2

Supplementary figure 3

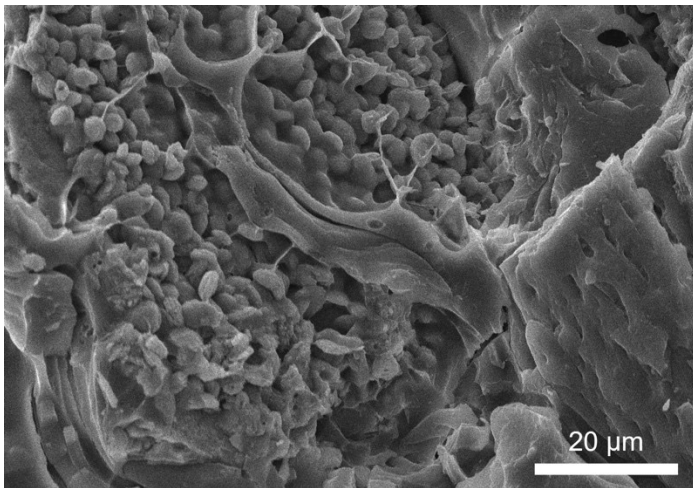
Supplementary figure 4

Supplementary tables:

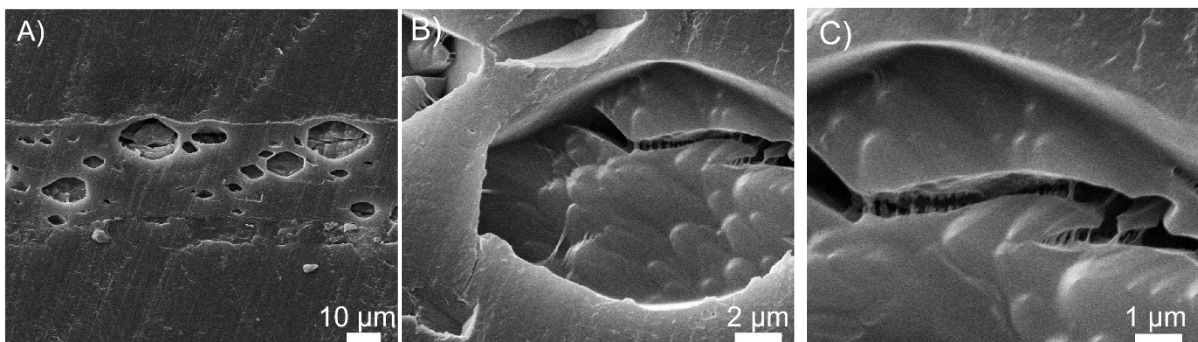
Supplementary table 1



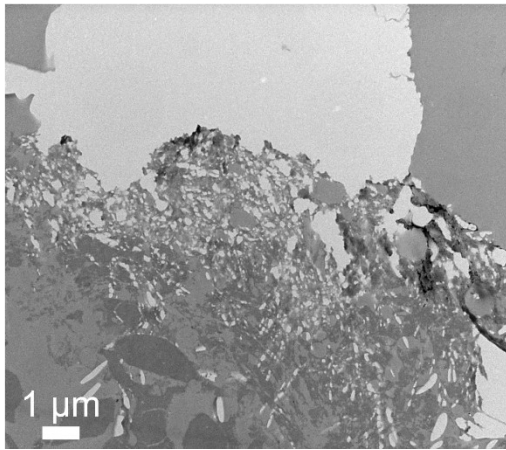
Supplementary figure 1 Microstructure of *Helix pomatia* eggshells. Scanning electron images showing the cross section of the eggshell of *Helix pomatia* at two different magnifications.



Supplementary figure 2 Vaterite spherulites of *Pomacea canaliculata*. Scanning electron microscope image shows the vaterite spherulites in between two adjacent eggs in the egg mass of *Pomacea canaliculata*.



Supplementary figure 3 Organic matrix in calcium oxalate crystals of *Periplanata lateralis*. Scanning electron microscopy at different magnifications shows the presence of organic fibrils.



Supplementary figure 4 Organic matrix of *Pelusios carinatus*. Transmission electron microscopy image shows the presence of the organic matrix near the mamillary knobs below the empty space represents the location where the rest of the calcium unit was but became detached.

Supplementary Table 1: Overview of examined eggshell from different taxa and their source.

Class	Order	Species	English name	Source
Insecta	Blattodea	<i>Periplaneta lateralis</i>	Turkestan cockroach	Private breeder
Insecta	Phasmatodea	<i>Diapherodes gigantea</i>	Giant lime green stick-insect	Private breeder
Insecta	Phasmatodea	<i>Rhynchacris ornata</i>	Stick insect	Private breeder
Insecta	Phasmatodea	<i>Mearnsiana bullosa</i>	Manobos stick insect	Private breeder
Reptilia	Testudines	<i>Pelusios carinatus</i>	African keeled mud turtle	Zoo Antwerp
Reptilia	Crocodylia	<i>Caiman crocodilus</i>	Spectacled caiman	Zoo Antwerp
Gastropoda	Stylommatophora	<i>Achatina fulica</i>	Giant African snail	Private breeder
Gastropoda	Stylommatophora	<i>Archachatina marginata</i>	Banana rasp snail	Private breeder
Gastropoda	Stylommatophora	<i>Helix aspersa</i>	Garden snail	Private breeder
Gastropoda	Archataenioglossa	<i>Pomacea canaliculata</i>	Apple snail	Private breeder
Aves	Rheiformes	<i>Rhea americana</i>	Greater rhea	Private breeder
Aves	Psittaciformes	<i>Psittacula roseata</i>	Blossom-headed parakeet	Private breeder

