

Supplementary figures for

A novel ultrasound-activated nano oxygen-carrying radiotherapy sensitizer combined with sonodynamic-radiotherapy for the treatment of esophageal cancer

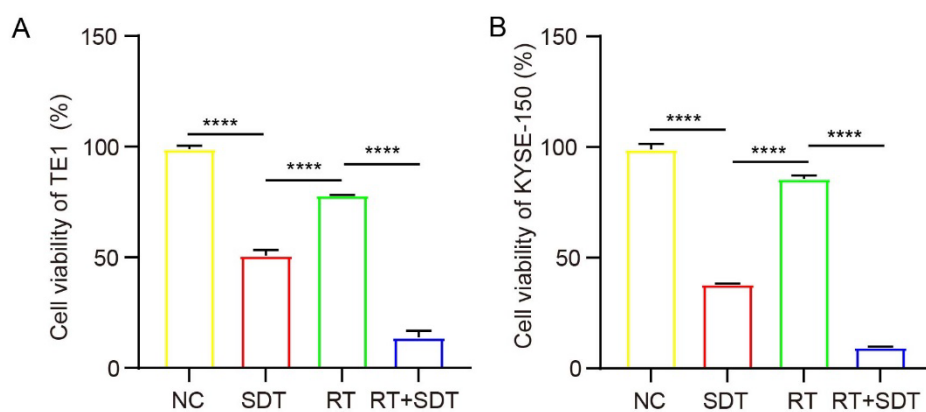


Figure S1. Cell viabilities of TE1 and KYSE-150 cells using different treatments.

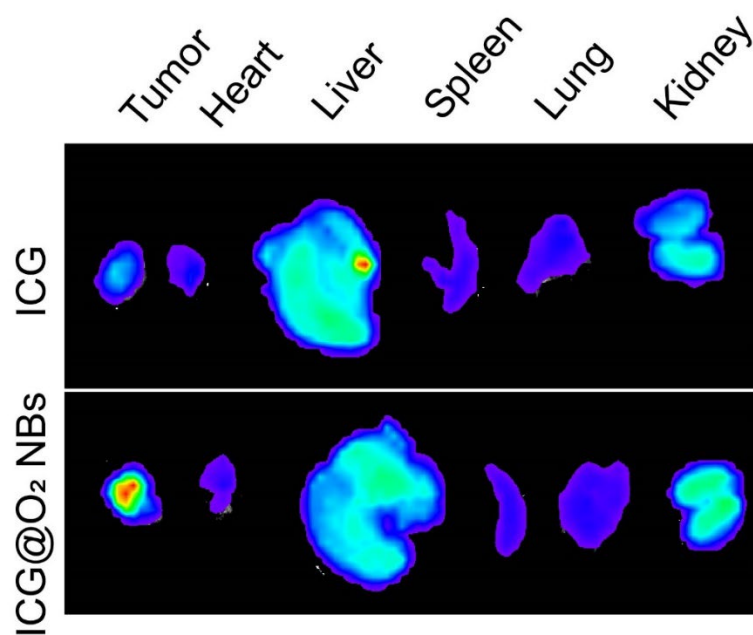


Figure S2. ex vivo fluorescence images of excised major organs and tumor tissues at 24 h post-injection.

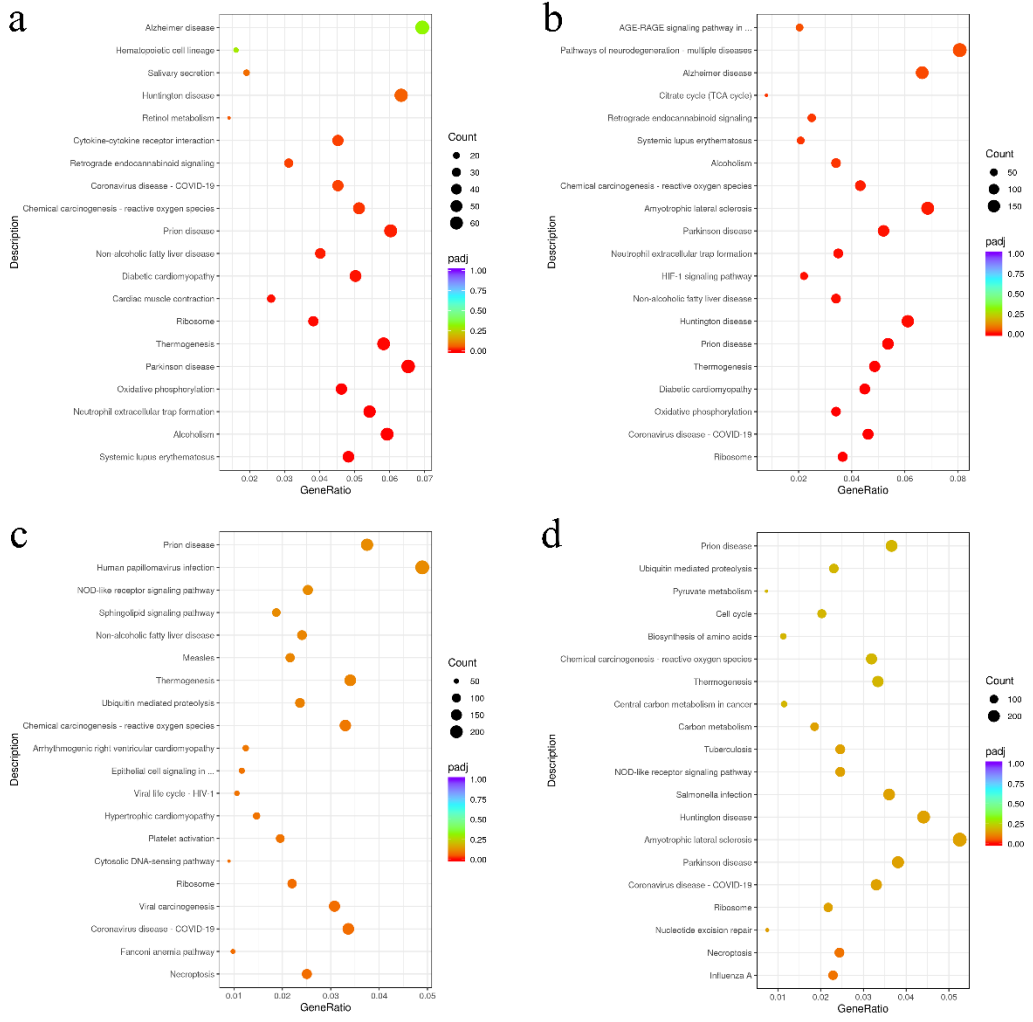


Figure S4. the detailed pathway enrichments of mRNA and lncRNA targets between different groups