

Support information

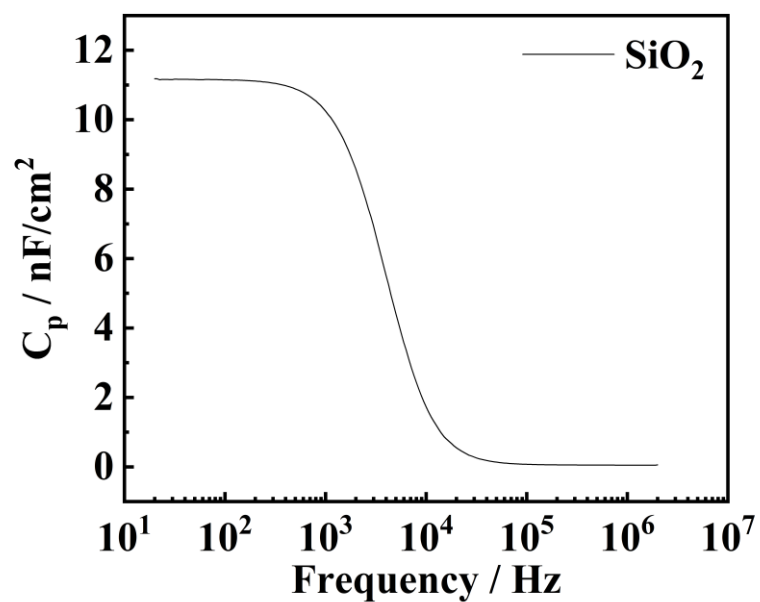


Fig. S1 Capacitance-frequency image of SiO₂

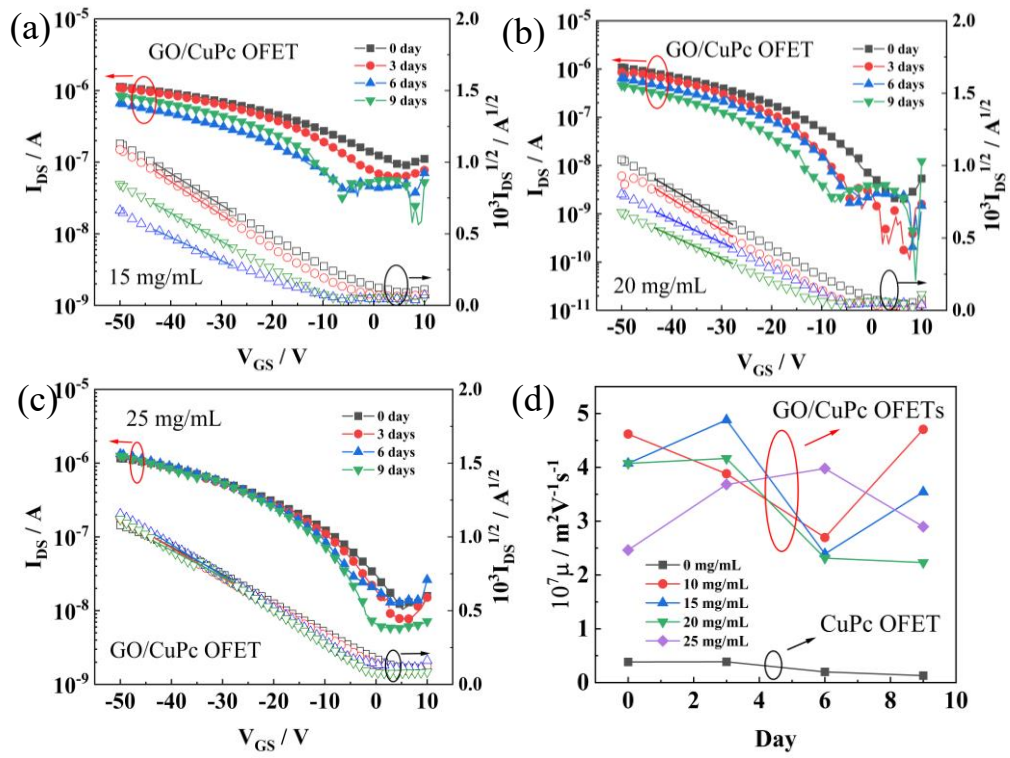


Fig. S2 Stability images. Fig. (a)-(c) show the stability of CuPc OFETs modified with 15, 20 and 25 mg/ml GO solution; Fig. (d) is the mobility of different concentrations of GO/CuPc OFETs.

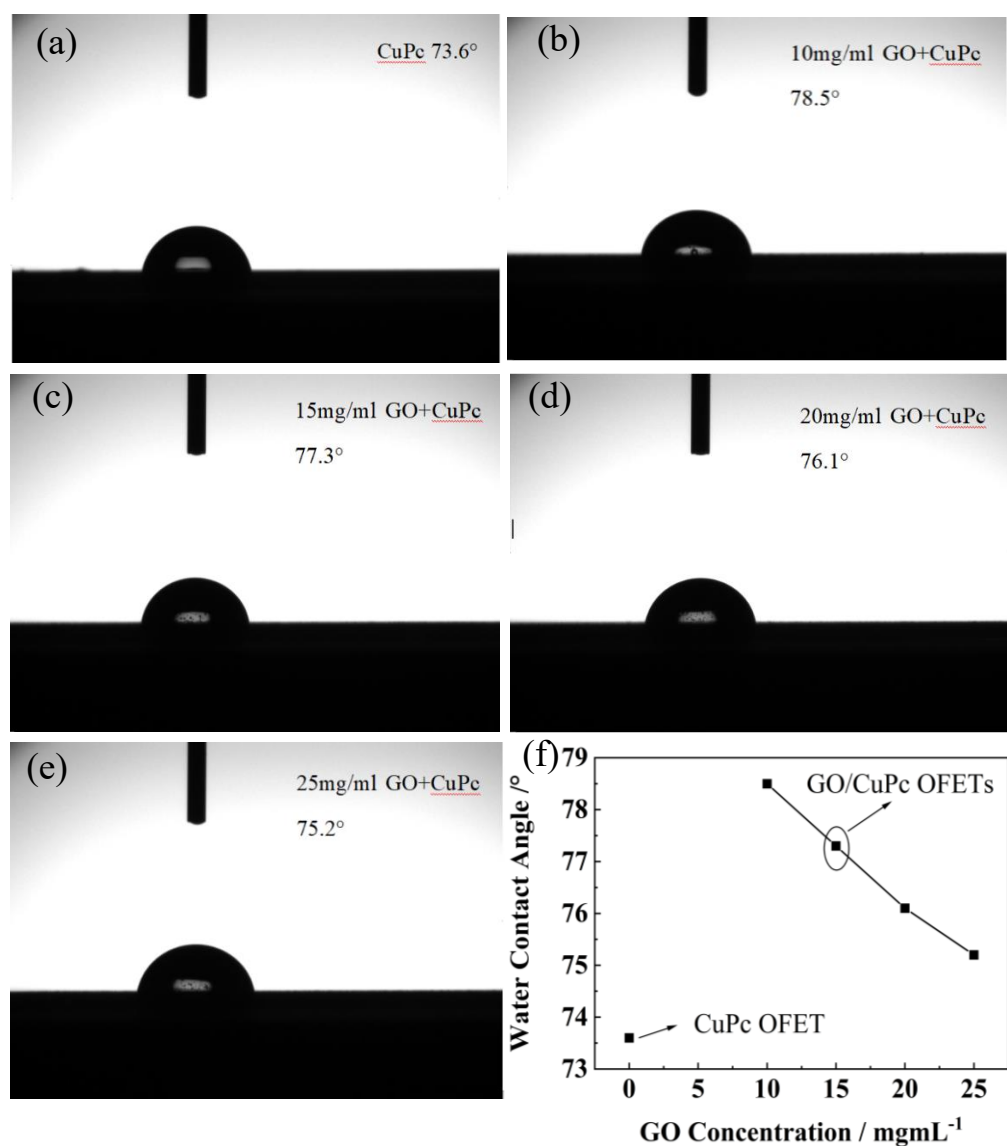


Fig. S3 Water contact angle images. Fig. (a)-(e) show the water contact angles of CuPc films modified with 0, 10, 15, 20 and 25 mg/ml of GO solutions, respectively, and Fig. (f) shows the linear variation of the above angles.

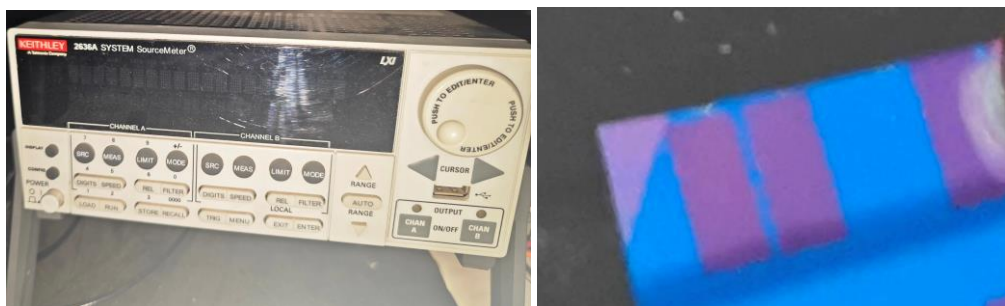


Fig. S4 Equipment and sample photos. (a) Crystal oscillator (b) Real CuPc transistor photos

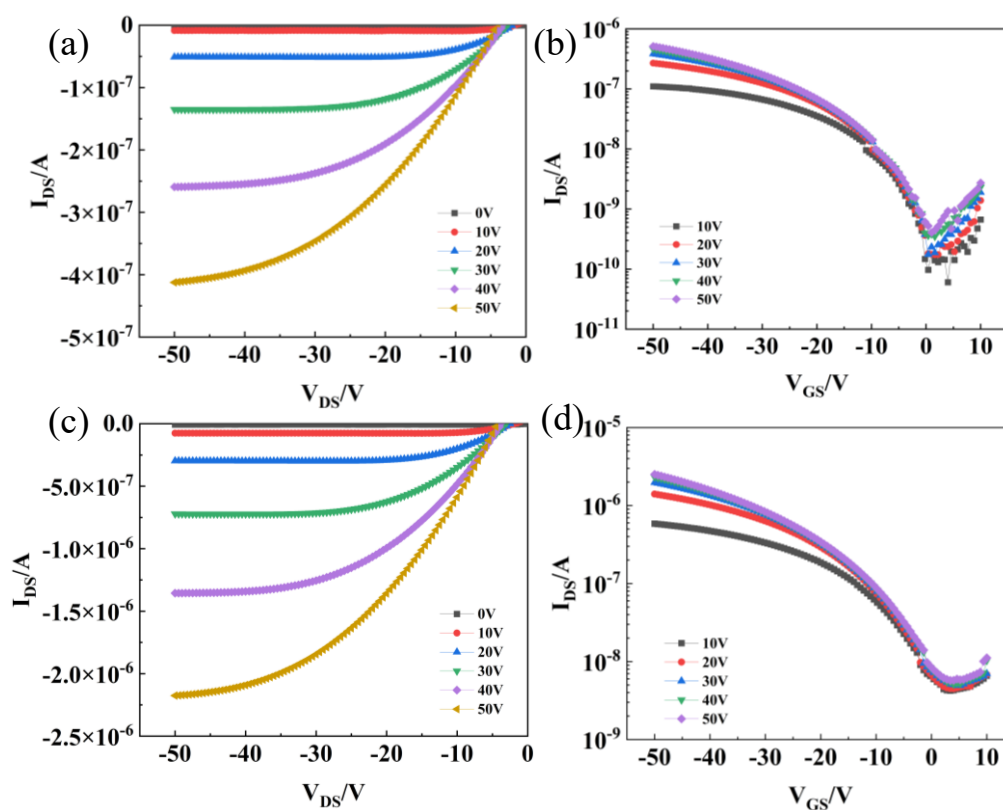


Fig. S5 The electrical properties of different batches of thin films. (a) and (b) show the output and transfer performance images of copper phthalocyanine films, respectively. Figures (c) and (d) show the output and transfer images of GO/CuPc films, respectively.

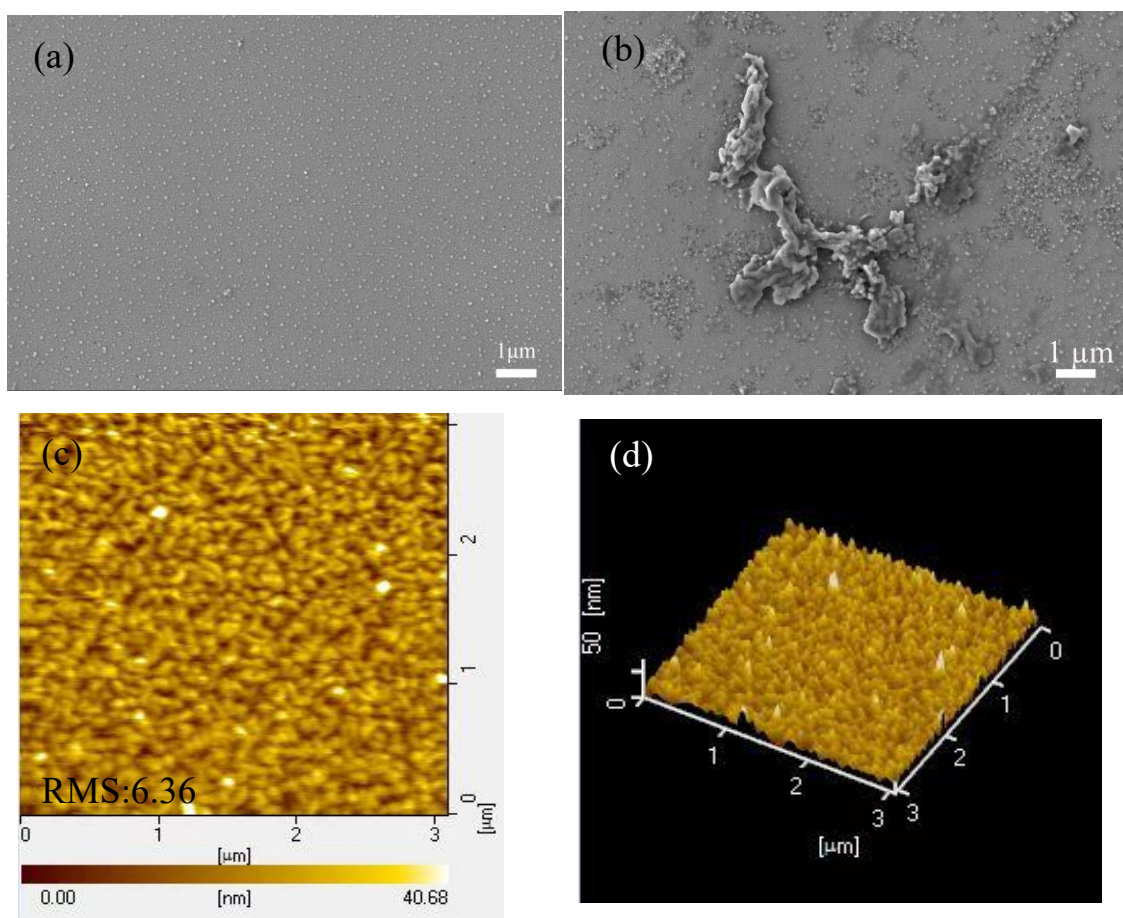


Fig. S6: Characterization images of (a) SEM morphology of CuPc films; (b) SEM morphology of GO/CuPc films; AFM morphology and three-dimensional AFM morphology of (c) and (d) CuPc films.