

Supplementary materials for:

Investigation of the phase transition to the Ruddlesden-Popper phase in La- or Nb-doped $\text{Sr}_2\text{Fe}_{1.5}\text{Mo}_{0.5}\text{O}_{6-\delta}$ double perovskites. Impact of lanthanum or niobium doping

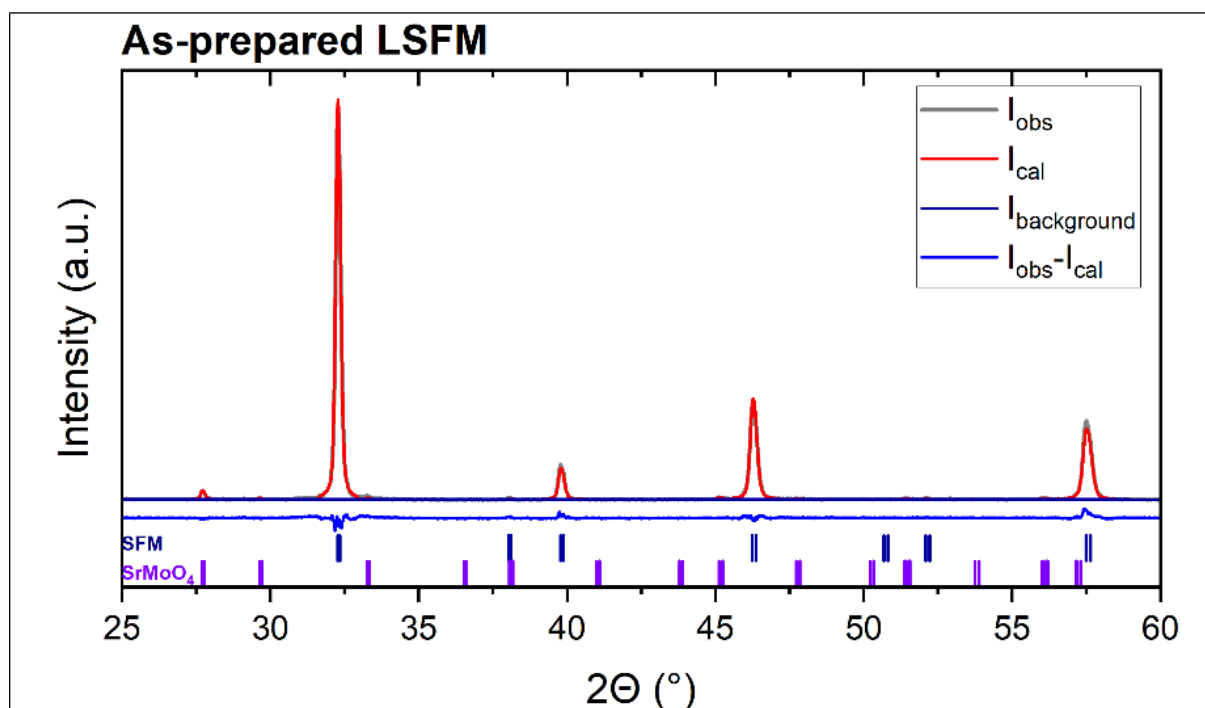
Agata Ducka^{(a)*}, Patryk Błaszczak^(a,b), Marcin Zając^(c), Alexey Maximenko^(c), Maria Gazda^(a), Beata Bochentyn^(a)

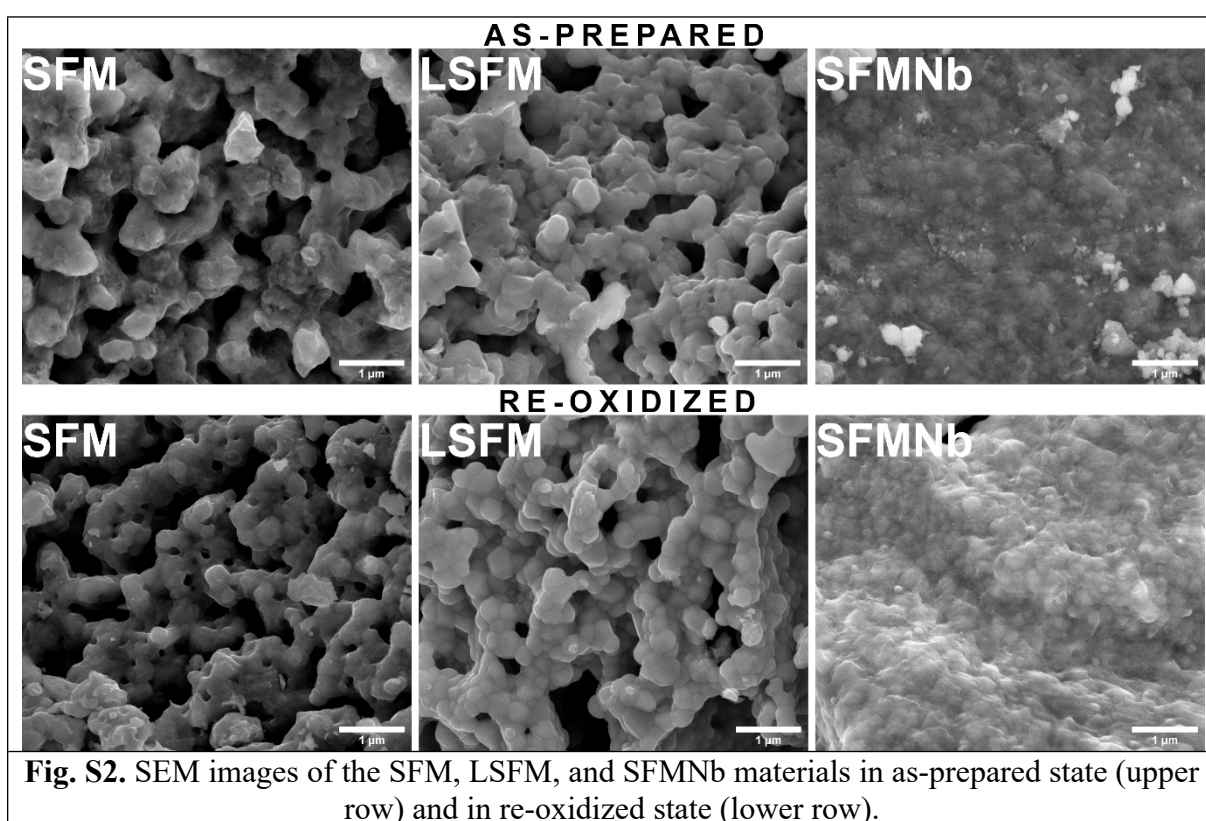
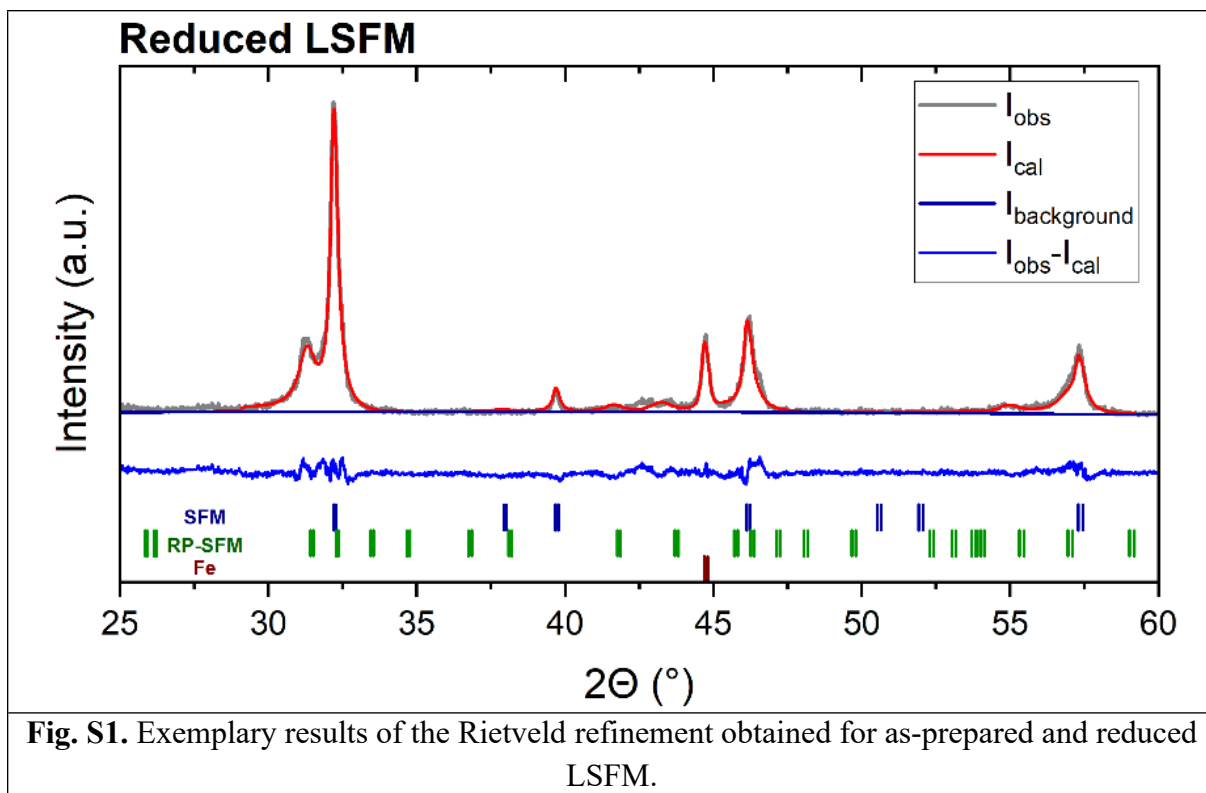
^(a) Faculty of Applied Physics and Mathematics, Gdansk University of Technology, ul. Narutowicza 11/12, 80-233 Gdańsk, Poland

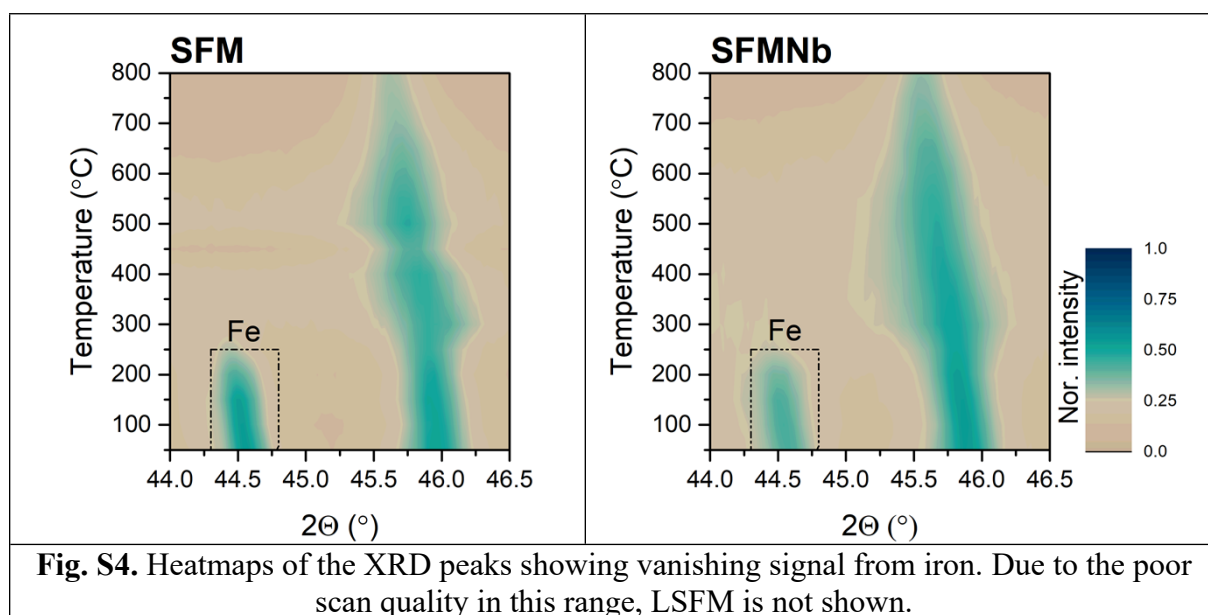
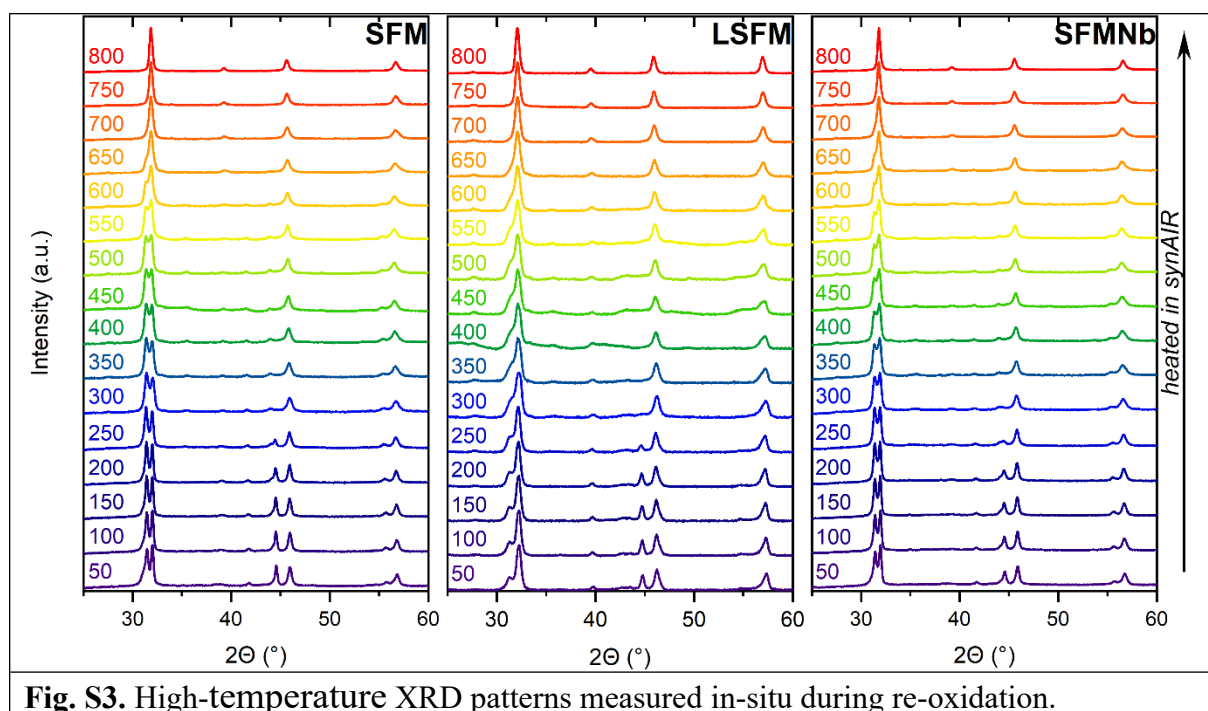
^(b) Faculty of Electrical and Control Engineering, Gdansk University of Technology, ul. Narutowicza 11/12, 80-233 Gdańsk, Poland

^(c) National Synchrotron Radiation Centre SOLARIS, Jagiellonian University, Czerwone Maki 98, 30-392 Kraków, Poland

*Corresponding author: agata.ducka@pg.edu.pl







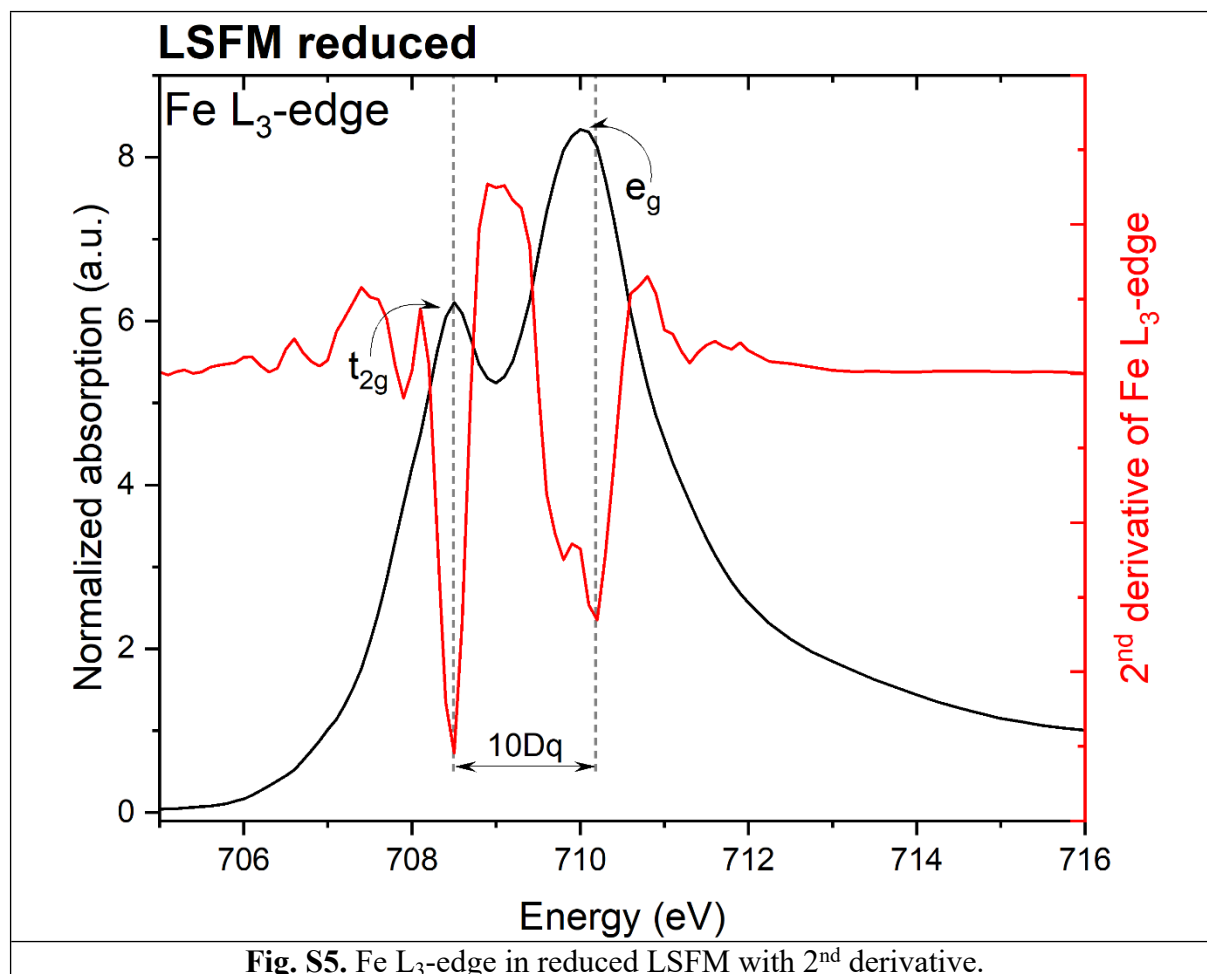


Fig. S5. Fe L₃-edge in reduced LSFM with 2nd derivative.

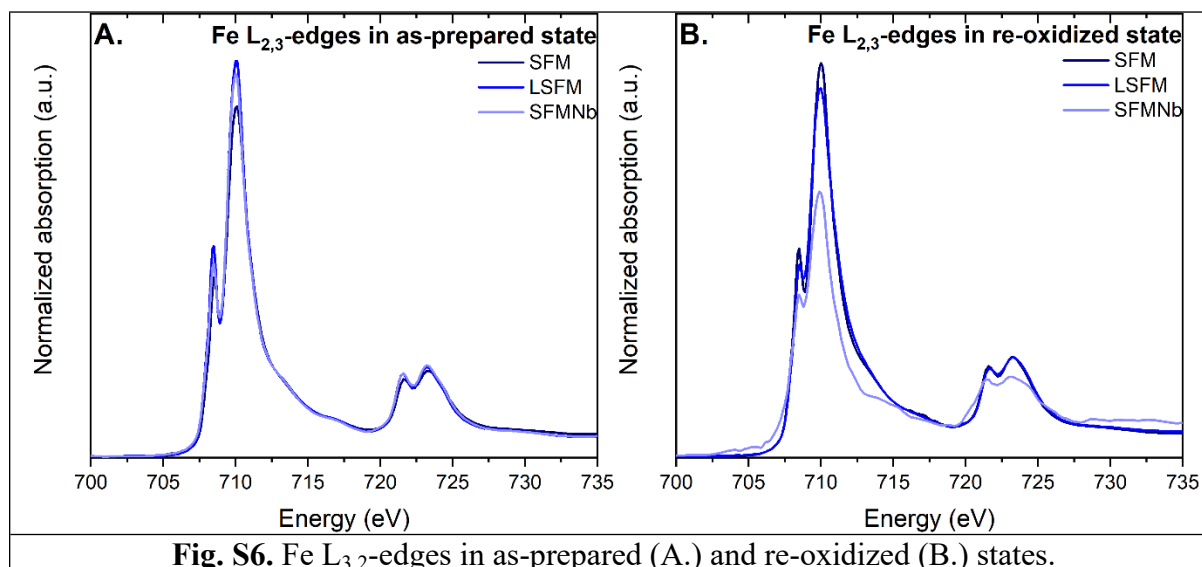


Fig. S6. Fe L_{2,3}-edges in as-prepared (A.) and re-oxidized (B.) states.

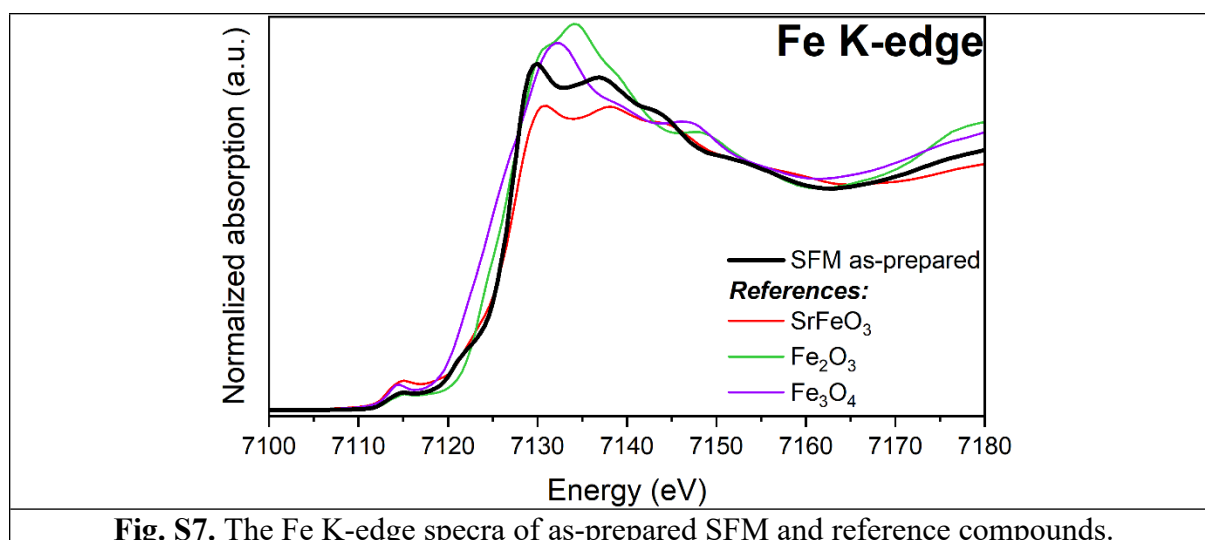


Fig. S7. The Fe K-edge spectra of as-prepared SFM and reference compounds.