

Supporting Information

Conformal phosphating hierarchical interface of CC/CoNiMn-P for hybrid supercapacitors with high rate stable cycling

Dongxu Wang ^a, Feng Zhu ^a, Yupeng Dang ^a, Jingze Luan ^a, Mingquan Li ^c, Zexiang Shen ^{d*}, Dandan Han ^{a, b*}

^aCollege of Chemistry and Pharmaceutical Engineering, Jilin Institute of Chemical Technology, Jilin 132022, China

^bCollege of Biology & Food Engineering, Jilin Institute of Chemical Technology, Jilin 132022, China

^cJilin Weisheng Energy Technology Development Co., Ltd., Jilin 132022, China

^dSchool of Physical & Mathematical Sciences, Nanyang Technological University, 21 Nanyang Link, 637371, Singapore

*Corresponding author.

E-mail address: luckhan2006@163.com (D.H.) ; zexiang@ntu.edu.sg (Z.X.S)

Figure S1. (a1, a2) SEM images of CC/CoNiMn-OH-1 and (b1, b2) SEM images of CC/CoNiMn-OH-3.

Figure S2. (a1, a2) SEM images of CC/CoNiMn-P-450 and (b1, b2) SEM images of CC/CoNiMn-P-550.

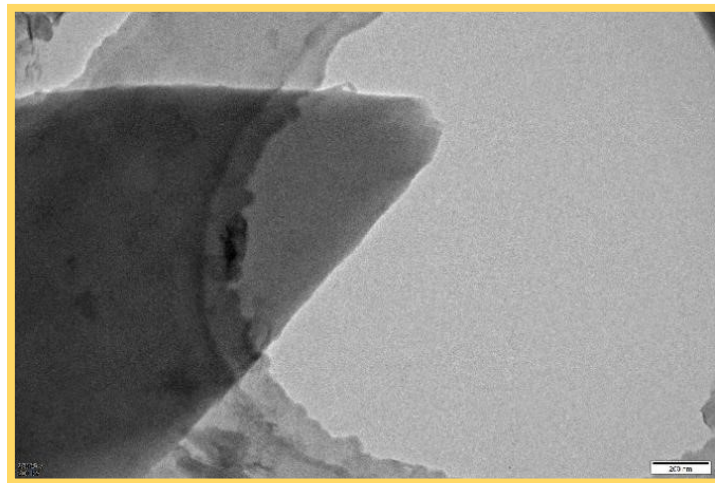


Figure S3. TEM image of CC/Co-MOF.

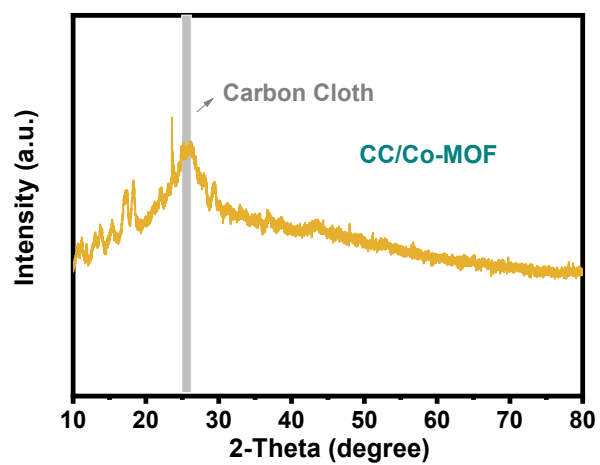


Figure S4. XRD pattern of CC/Co-MOF.

Figure S5. EDX spectrum of CC/Co-MOF.

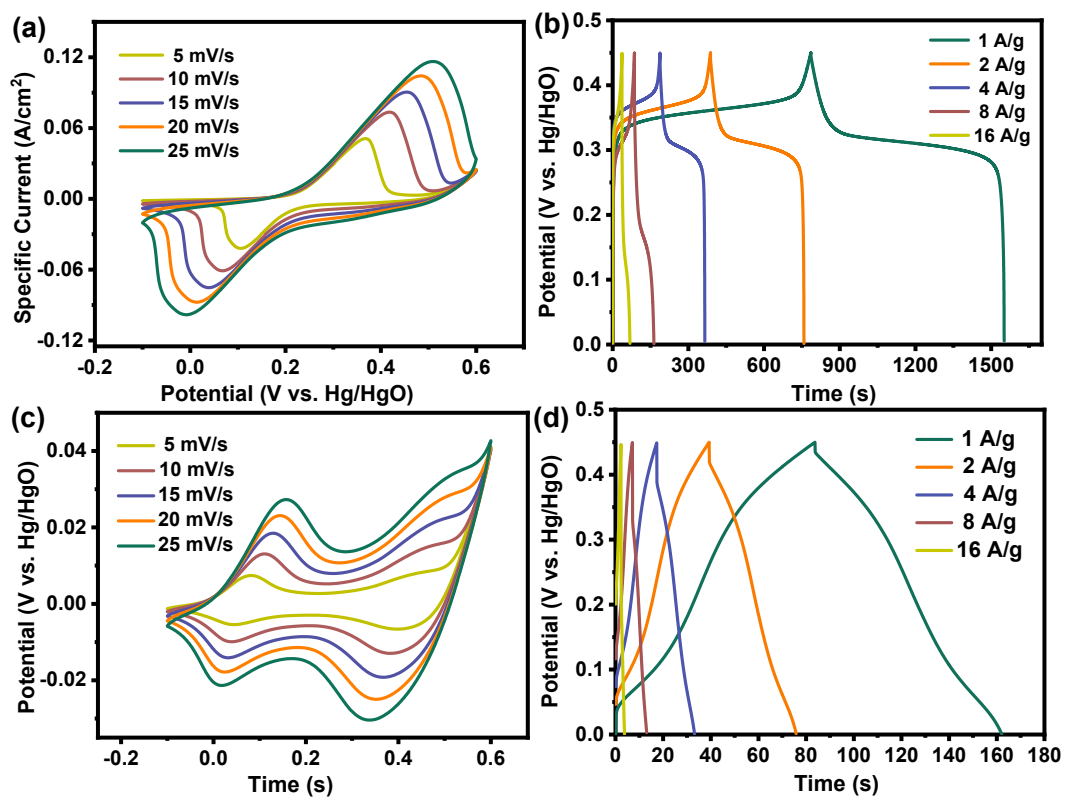


Figure S6. (a) and (c) CV curves of CC/CoNiMn-OH-2 and CC/Co-MOF, (b) and (d)

GCD curves of CC/CoNiMn-OH-2 and CC/Co-MOF

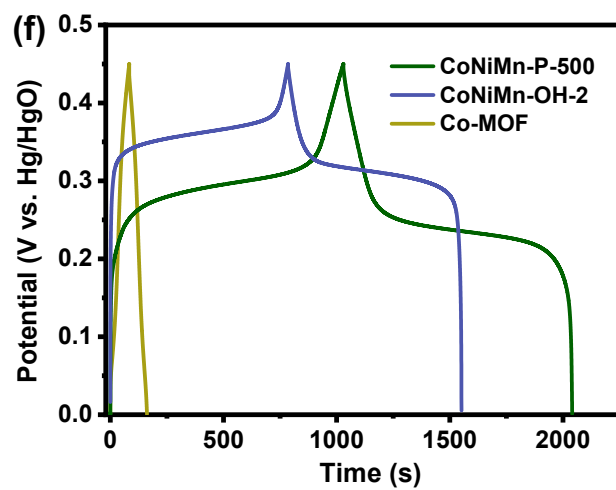


Figure S7. GCD curves of the samples at a current density of $1 \text{ A} \cdot \text{g}^{-1}$

□

Figure S8. CV and GCD curves of CC/CoMn-OH, CC/CoNi-OH and CC/CoNiMn-OH.

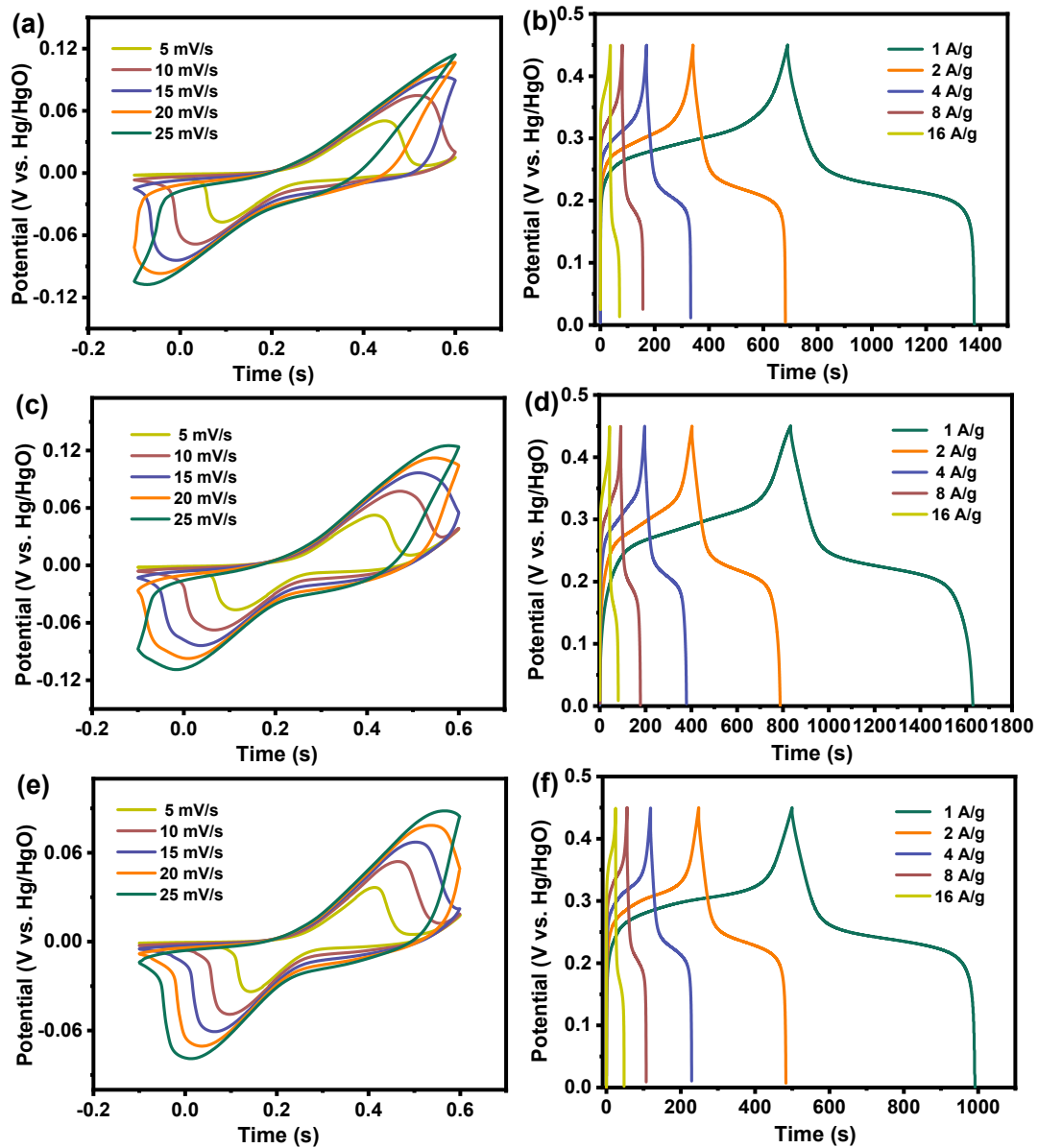


Figure S9. CV and GCD curves of CC/CoNiMn-P-400, CC/CoNiMn-P-450 and CC/CoNiMn-P-550.

Figure S10. The Nyquist curve of CC/CoNiMn-OH (1, 2, 3) and CC/CoNiMn-P (400, 450, 500, 550).

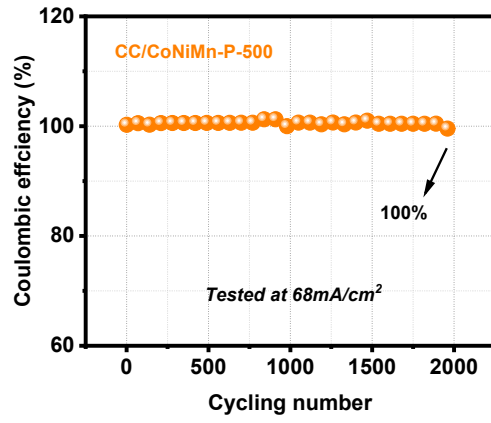


Figure S11. The coulombic efficiency of CC/CoNiMn-P-500.

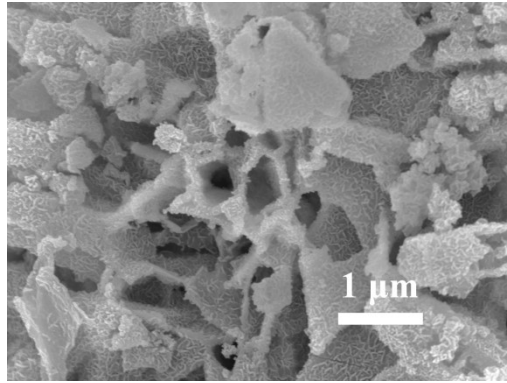


Figure S12. The SEM images of CC/CoNiMn-P-500 after 10,000 charge-discharge cycles.