

Supplementary Material (ESI)

Synthesis, crystal structure and magnetic properties of a Cu(II)-W(V) bimetallic complex with a novel open framework structure

Feng-Tai Chen,^a Dong-Feng Li,^a Song Gao,^b Xin-Yi Wang,^b Yi-Zhi Li,^{a*} Li-Min Zheng,^{a*} Wen-Xia Tang^a

^aState Key Laboratory of Coordination Chemistry, Coordination Chemistry Institute, Nanjing University, Nanjing 210093, P. R. China

E-mail: lmzheng@netra.nju.edu.cn

^bState Key Laboratory of Rare Earth Materials Chemistry and Applications, Peking University, Beijing 100870, P. R. China

Figure S1 Thermal analysis of complex **1**.

Figure S2 IR spectra of complex **1**.

Figure S3 XRD pattern of complex **1**.

Figure S4 Real(χ') and imaginary(χ'') ac magnetic susceptibilities as a function of temperature with frequencies 111, 199, 355, 633 and 1111Hz for **1**.

Figure S5 Magnetic hysteresis loop at T = 1.8 K.

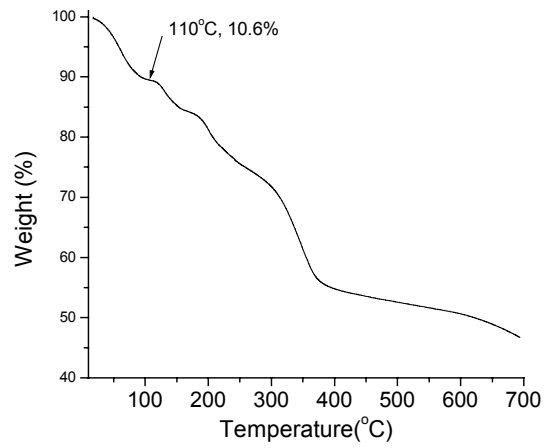


Figure S1

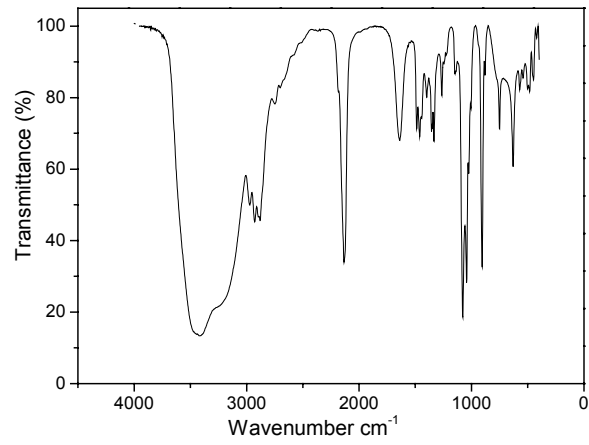


Figure S2

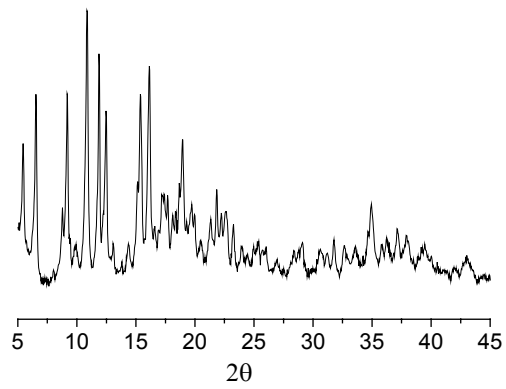


Figure S3

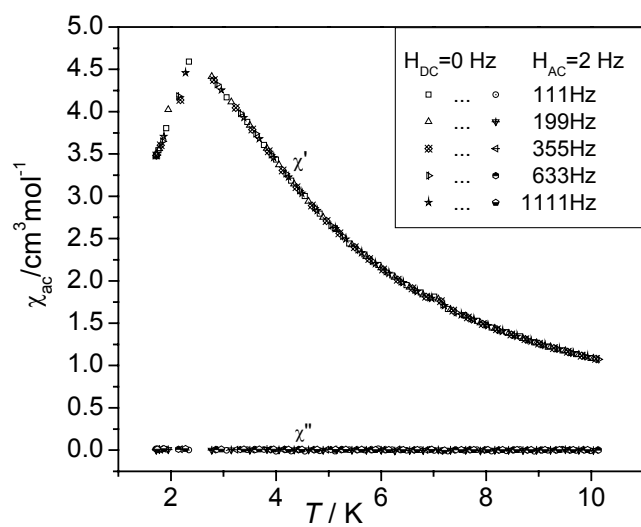


Figure S4

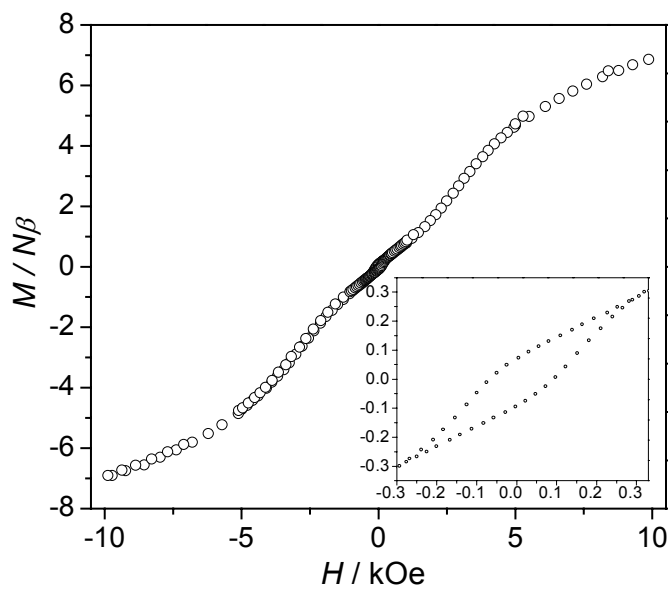


Figure S5