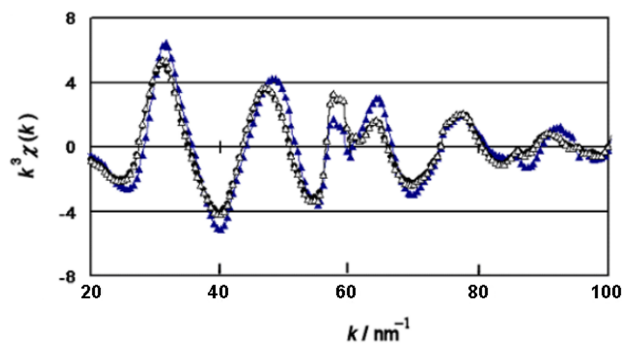


(a) Yttrium compounds

- ▲ Y_2O_3
- $\text{Y}(\text{oct-ala})_3\text{H}_2\text{O}$ glassy
- △ $\text{Y}(\text{oct-ala})_3\text{H}_2\text{O}$ crystalline



(b) Lanthanum compounds

- ▲ $\text{La}(\text{acac})_3 \cdot 2\text{H}_2\text{O}$
- $\text{La}(\text{oct-ala})_3 \cdot \text{H}_2\text{O}$ glassy
- △ $\text{La}(\text{oct-ala})_3 \cdot \text{H}_2\text{O}$ crystalline