

Supporting Information

Synthesis, Crystal Structure, Magnetic and Luminescence Properties of KEuGe_2O_6 : A Europium Cyclogermanate Containing Infinite Chains of Edge-Sharing Eu-O Polyhedra

Pei-Lin Chen,^a Pei-Yun Chiang,^a Han-Ching Yeh,^a Bor-Chen Chang,^{a,*} and Kwang-Hwa

Lii^{a,b,*}

^a*Department of Chemistry, National Central University, Chungli, Taiwan, R.O.C.*

^b*Institute of Chemistry, Academia Sinica, Taipei, Taiwan, R.O.C.*

Table S1. Experimental (bottom) and simulated (top) X-ray powder patterns for KEuGe_2O_6

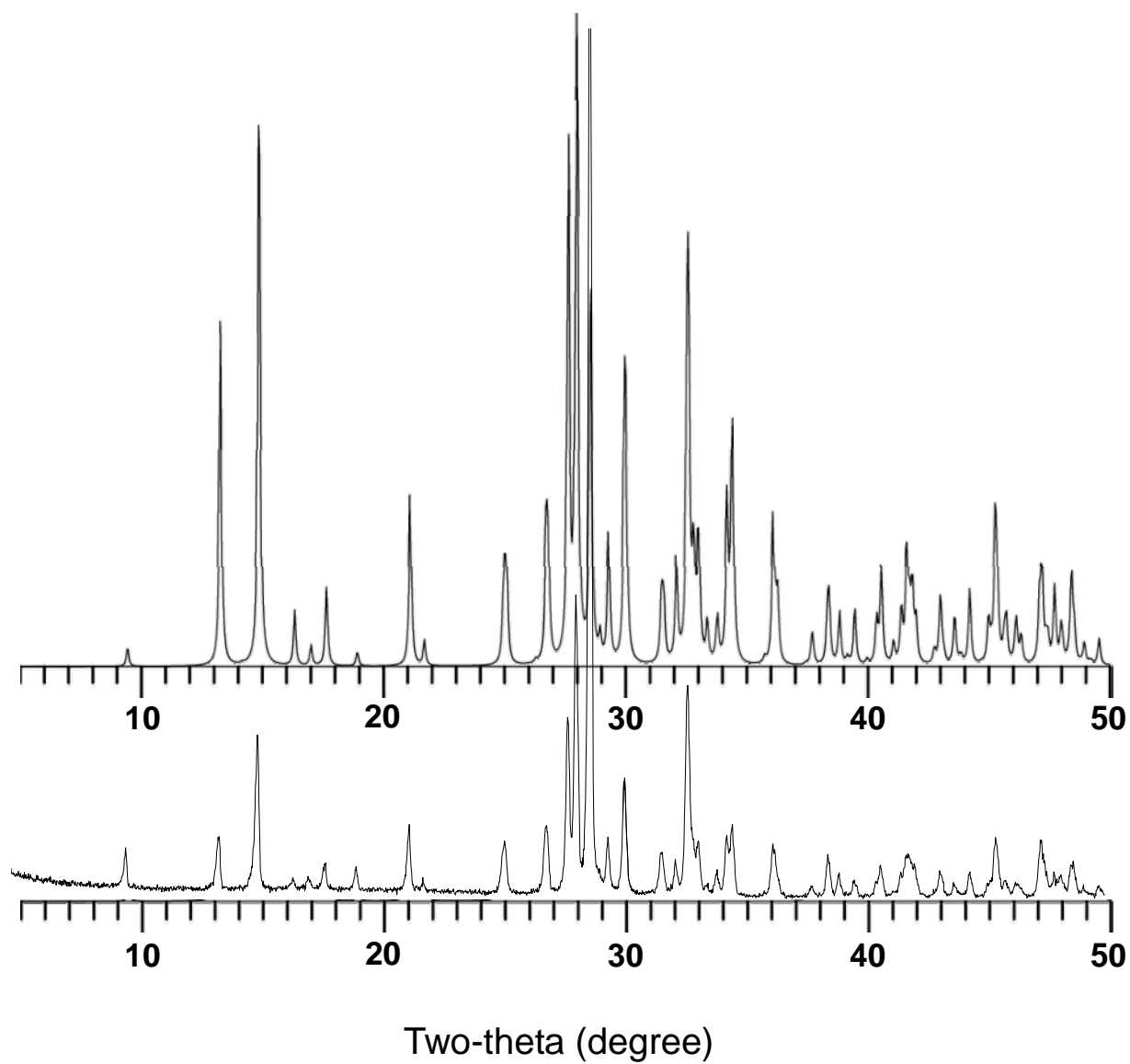


Figure S1