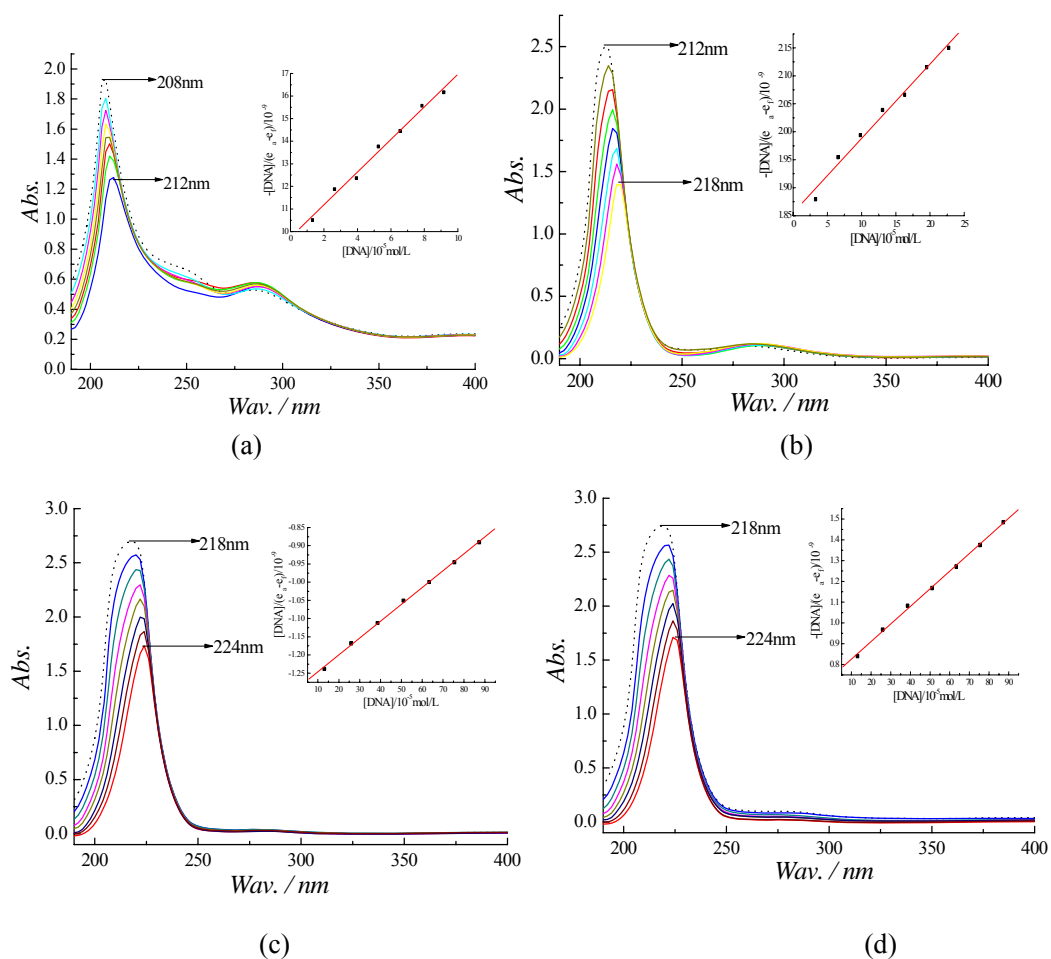
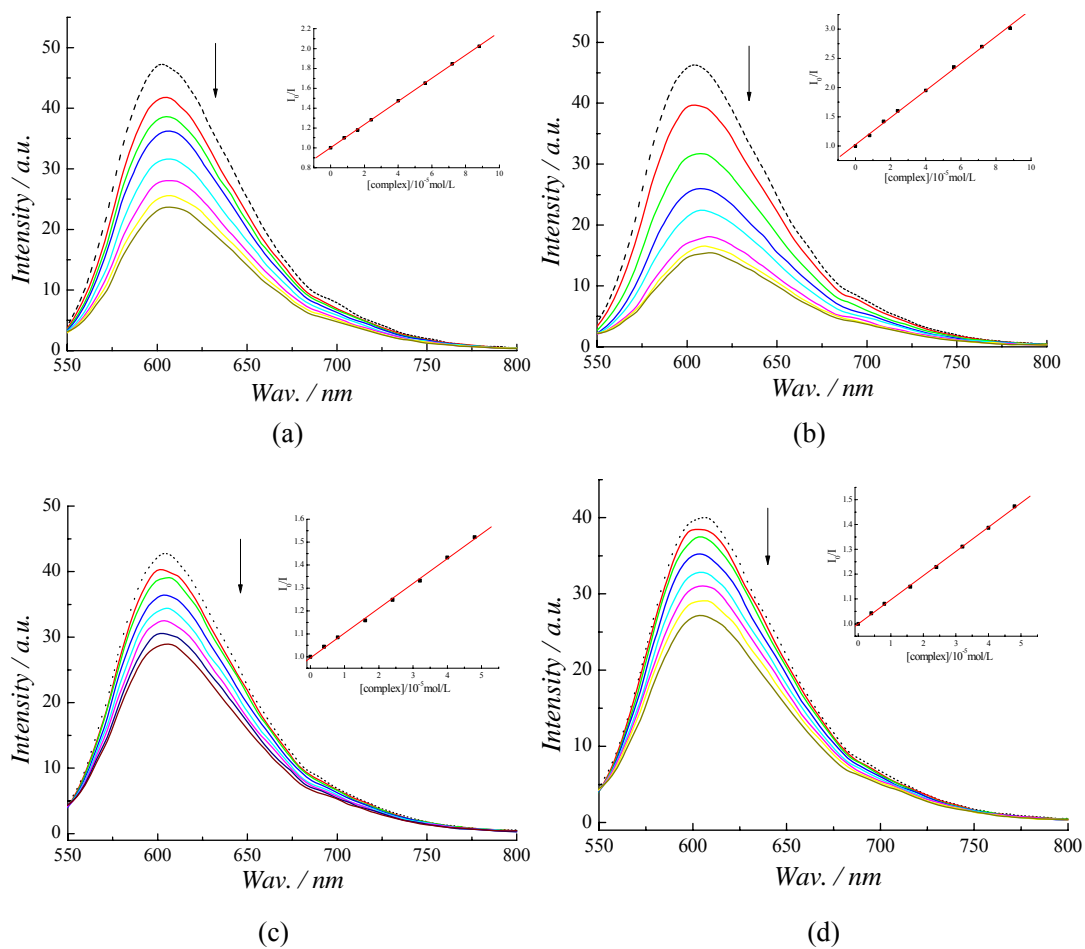


**Fig. S1** ESR spectra for complexes **1**, **3**, **4** and **5**.



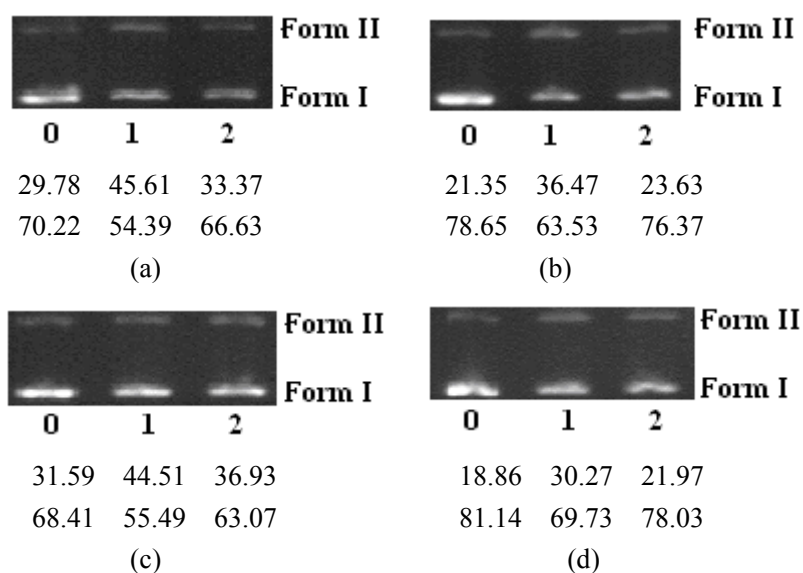
**Fig. S2** Absorption spectra of complexes **1** (a) ( $1 \times 10^{-4}$  M), **3** (b) ( $1 \times 10^{-5}$  M), **4** (c) ( $1 \times 10^{-6}$  M) and **5** (d) ( $1 \times 10^{-6}$  M) in the absence (dashed line) and presence (solid line) of increasing amounts of CT-DNA at room temperature in 50 mmol Tris-HCl/18 mmol NaCl buffer (pH = 7.2). The dashed lines indicate the free complexes.



**Fig. S3** Fluorescence quenching curves and plots of  $I_0/I$  vs.  $[\text{complex}]$  of EB bound to DNA by Complexes **1** (a), **3** (b), **4** (c) and **5** (d).  $\lambda_{\text{ex}} = 510 \text{ nm}$ .

**Table S1.** The DNA mass fraction (%) of agarose gel electrophoresis of pBR322 plasmid DNA treated with 200  $\mu$ M complexes in the absence and presence of hydrogen peroxide

Complex	Form I	Form II	Form I (H <sub>2</sub> O <sub>2</sub> )	Form II (H <sub>2</sub> O <sub>2</sub> )	Form III (H <sub>2</sub> O <sub>2</sub> )
<b>1</b>	60.67	39.33	36.65	63.35	0
<b>3</b>	41.35	58.65	35.61	64.39	0
<b>4</b>	58.70	41.30	41.23	58.77	0
<b>5</b>	59.72	40.28	18.60	56.59	24.81



**Fig. S4** Cleavage of pBR322 DNA (0.1  $\mu$ g /  $\mu$ L) at room temperature for 3 h. (a) lane 0: DNA control; lane 1: DNA + **1** in air; lane 2: DNA + **1** in N<sub>2</sub> atmosphere; (b) lane 0: DNA control; lane 1: DNA + **3** in air; lane 2: DNA + **3** in N<sub>2</sub> atmosphere; (c) lane 0: DNA control; lane 1: DNA + **4** in air; lane 2: DNA + **4** in N<sub>2</sub> atmosphere; (d) lane 0: DNA control; lane 1: DNA + **5** in air; lane 2: DNA + **5** in N<sub>2</sub> atmosphere.