

## Electronic Supporting Information

For

*Synthesis and structural characterization of well-defined lithium aluminium  
alkoxide complexes supported by NON-type diamido ether tridentate ligands  
and their use for the controlled ROP of lactide*

Frédéric Hild,<sup>§</sup> Pierre Haquette<sup>‡</sup> and Samuel Dagorne<sup>§\*</sup>

<sup>§</sup>Laboratoire DECOMET, Institut de Chimie (UMR CNRS 7177), Université de Strasbourg, 4  
rue Blaise Pascal, 67000 Strasbourg, France.

and

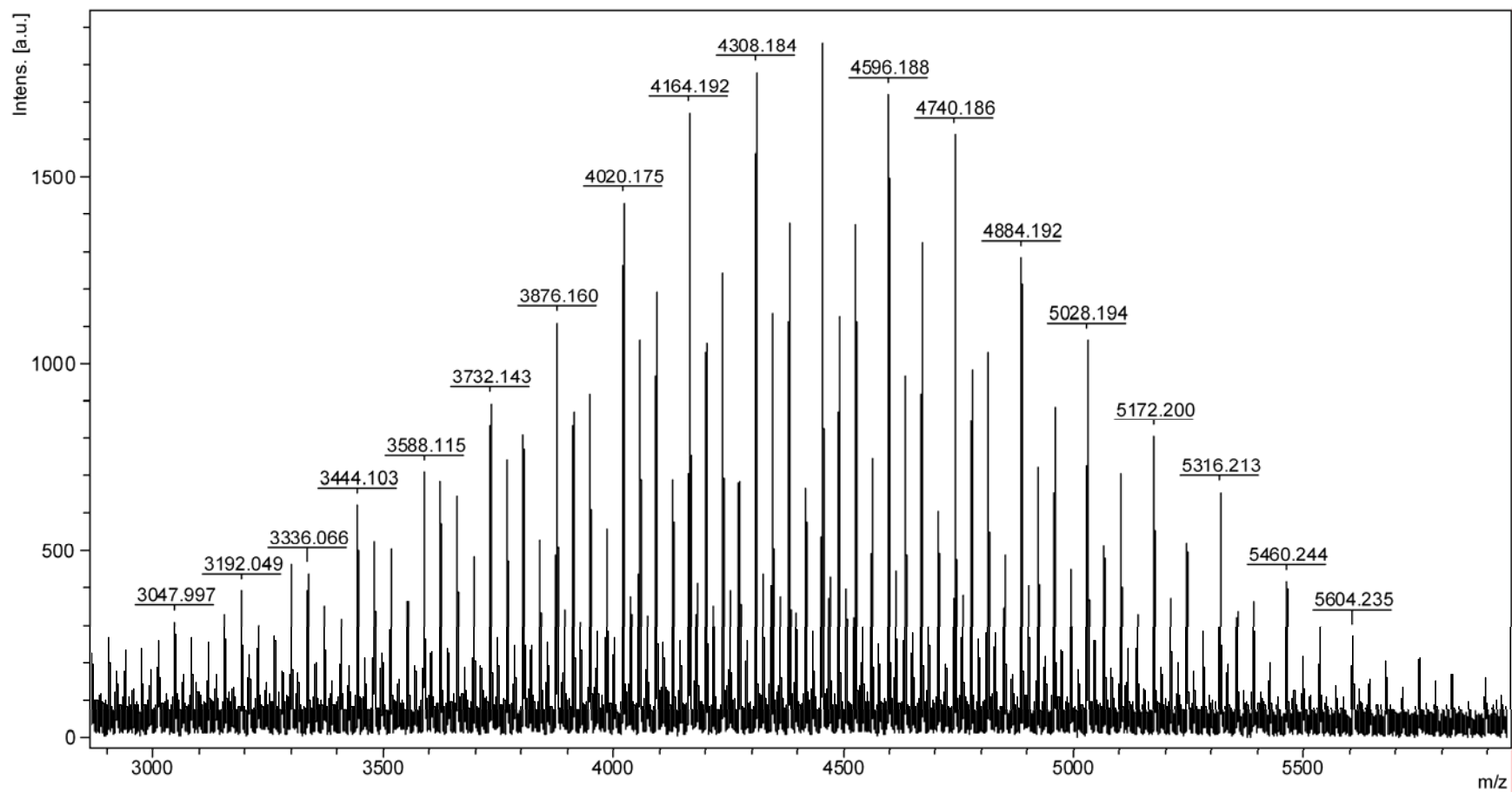
<sup>‡</sup>Laboratoire Charles Friedel, UMR CNRS 7223, Ecole Nationale Supérieure de Chimie de  
Paris, 11 rue Pierre et Marie Curie, 75005 Paris, France.

### Table of Contents

- **Figures S1 and S2** : MALDI-TOF spectra of PLA
- **Figure S3** : Molecular structure (ORTEP drawing) of the Al hydrido complex **2b**
- **Table S1**: Summary of crystallographic data for compound **2b**

---

\* E-mail: dagorne@unistra.fr



**Figure S1.** MALDI-TOF mass spectrum of the PLA obtained after ROP of *rac*-LA for 8h (CH<sub>2</sub>Cl<sub>2</sub>, RT)

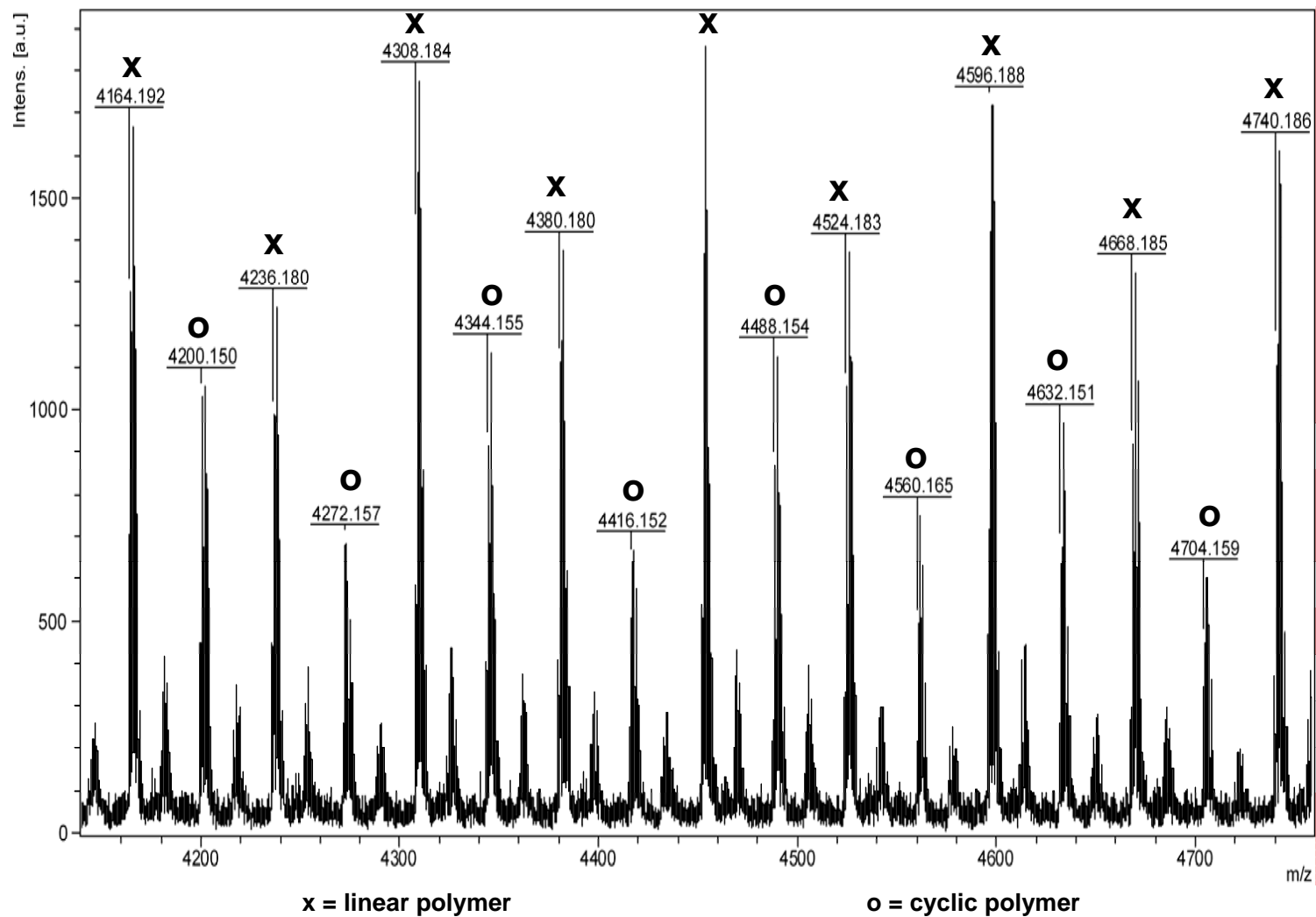
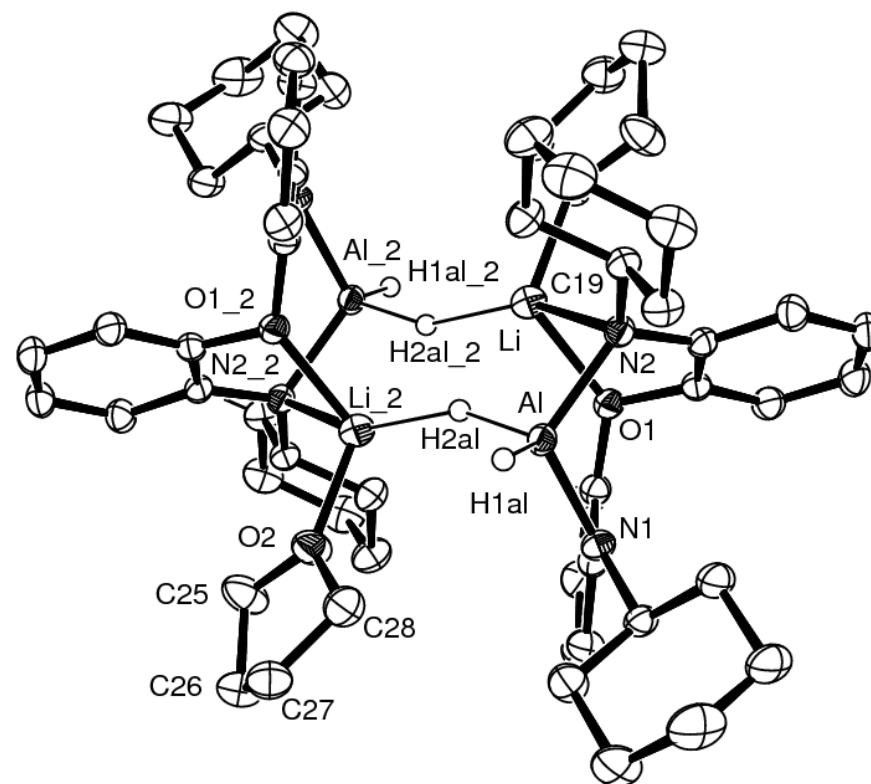


Figure S2. Blow-up of Figure S1



**Figure S3.** Molecular structure (ORTEP drawing) of the Al complex **2b**

**Table S1:** Summary of crystallographic data for compound **2b**

Compound	<b>2b</b> (CH <sub>2</sub> Cl <sub>2</sub> )
Formula	C <sub>29</sub> H <sub>42</sub> AlCl <sub>2</sub> LiN <sub>2</sub> O <sub>2</sub>
Formula weight	555.47
Crystal system	triclinic
Space group	P-1
a (Å)	9.462(1)
b (Å)	12.194(1)
c (Å)	14.042(1)
α (°)	107.895(1)
β (°)	106.337(1)
γ (°)	91.031(1)
V (Å <sup>3</sup> )	1469.82(6)
Z	2
Density (g.cm <sup>-3</sup> )	1.255
μ (Mo Kα) (mm <sup>-1</sup> )	0.279
F(000)	592
Crystal Size [mm]	0.10×0.10×0.10
<b>Data collection</b>	
Temperature (K)	173(2)
Radiation (Å)	MoKα - 0.71073
Theta min - max	1.60 - 30.02
Dataset [h, k, l]	-12/13, -17/17, -19/18
Tot., Uniq. Data, R(int)	19301, 8573, 0.0599
Observed data (I>2σ(I))	6143
<b>Refinement</b>	
Nreflections, Nparameters	8573, 342
R2(all), R1(I>2σ(I)), wR2(all), wR1(I>2σ(I)), Goof	0.0833, 0.0538, 0.1600, 0.1372, 0.980
Max. and Av. Shift/Error	0.000, 0.000
Min, Max. Resd Dens. (e.Å <sup>-3</sup> )	-0.686, 0.593