

## Supporting Information

### **Rare Earth Metal Squarates Incorporating Ethylene Glycol Ligand with a Three-Dimensional Framework Structure: $\text{RE}(\text{C}_4\text{O}_4)_{1.5}(\text{C}_2\text{H}_6\text{O}_2)$ (RE = Y, La-Nd, Sm-Lu)**

Yen-Shen Liu,<sup>a</sup> Ming-Feng Tang,<sup>a</sup> and Kwang-Hwa Li<sup>a,b,\*</sup>

<sup>a</sup>*Department of Chemistry, National Central University, Jhongli, Taiwan 320*

<sup>b</sup>*Institute of Chemistry, Academia Sinica, Taipei, Taiwan 115*

\*E-mail: [liikh@cc.ncu.edu.tw](mailto:liikh@cc.ncu.edu.tw)

## Figure Caption

**Figure S1.** The powder X-ray diffraction patterns for  $\text{RE}(\text{C}_4\text{O}_4)_{1.5}(\text{C}_2\text{H}_6\text{O}_2)$  (RE = Y (1), La (2), Ce (3), Pr (4), Nd (5)). The calculated pattern for 5 is shown for comparison.

**Figure S2.** Variable-temperature X-ray powder patterns for 3.

**Figure S3.** The unit cell volumes of  $\text{RE}(\text{C}_4\text{O}_4)_{1.5}(\text{C}_2\text{H}_6\text{O}_2)$  (RE = Y (1), La (2), Ce (3), Pr (4), Nd (5), Sm (6), Eu (7), Gd (8), Tb (9), Dy (10), Ho (11), Er (12), Tm (13), Yb (14), Lu (15))

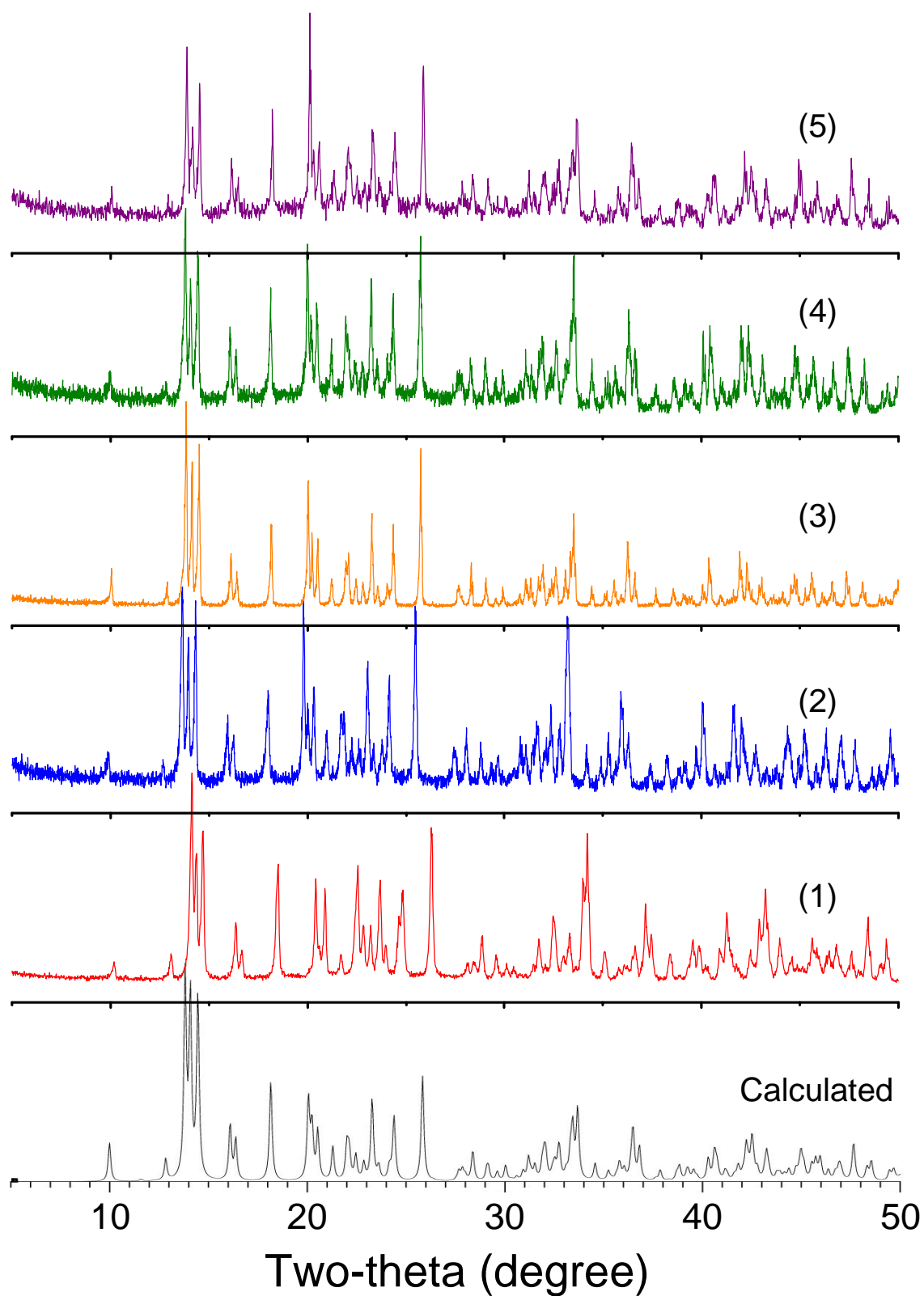


Figure S1

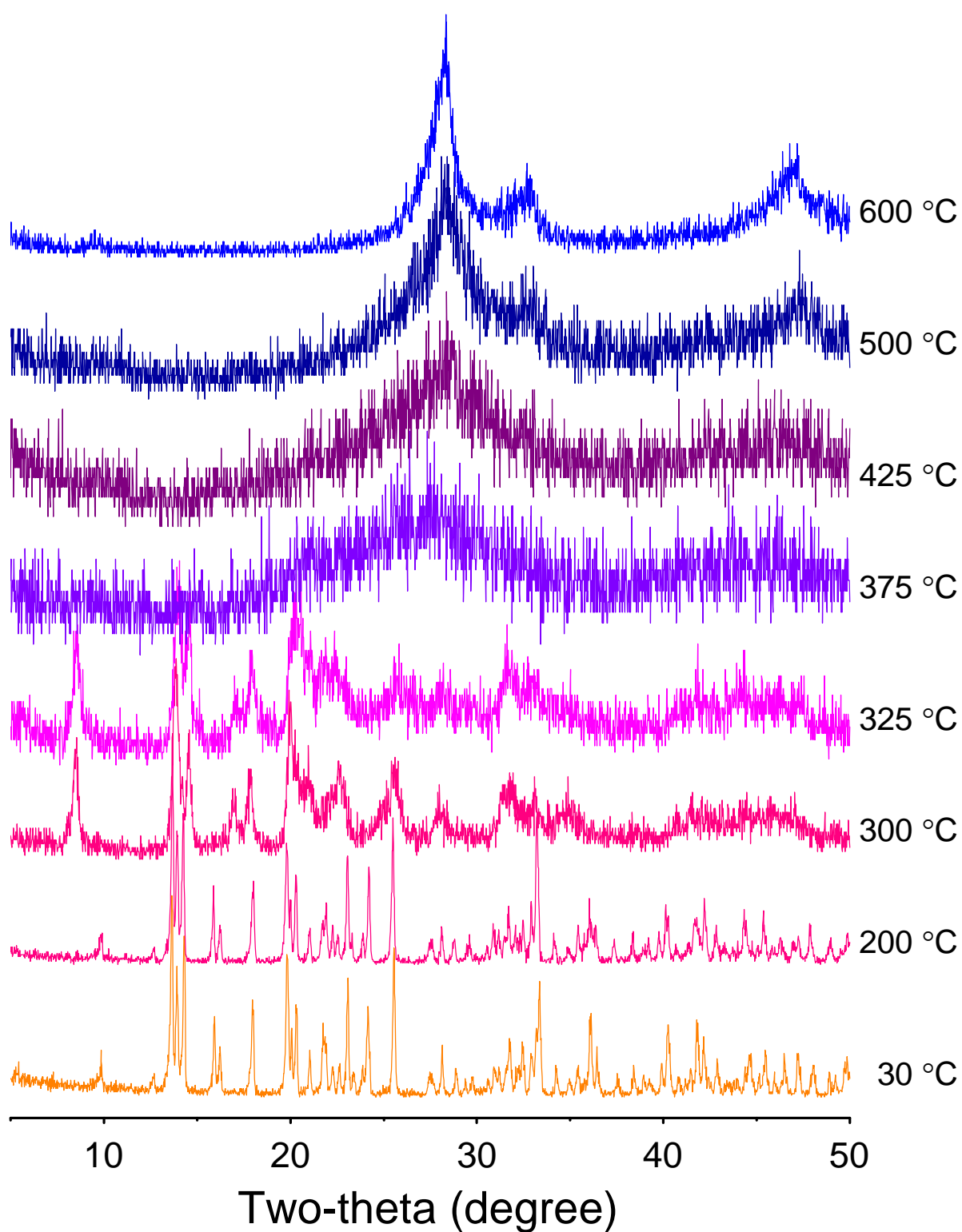


Figure S2

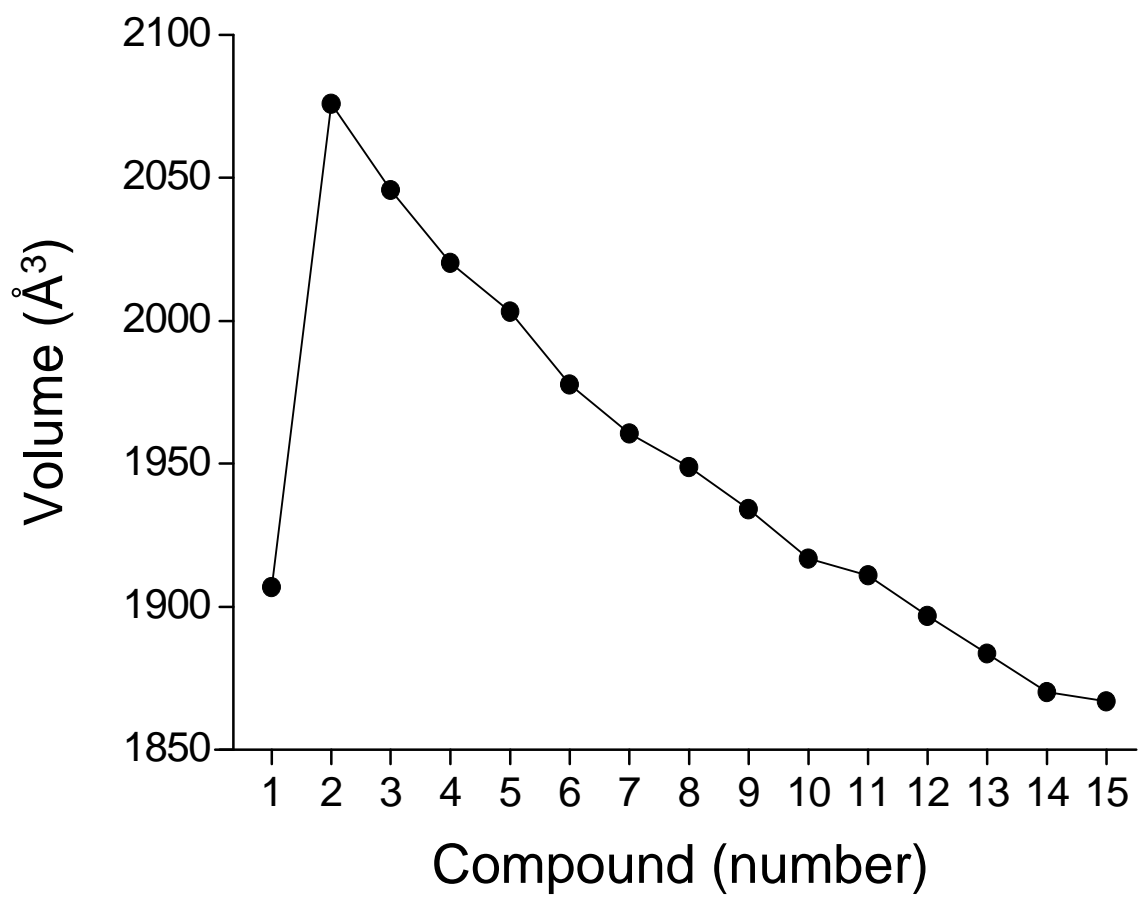


Figure S3