

Electronic Supplementary Information

Six [Tp*WS₃Cu₂]-based clusters derived from [Et₄N][Tp*WS₃], Cu(I) salts and phosphine ligands: syntheses, structures and enhanced third-order NLO properties

Li-Kuan Zhou,^{a,b} Quan Liu,^a Xin Zhao,^a Fei-Long Hu,^a Shu-Chen Liu,^a Zhi-Gang Ren,^{*a,c} Zhen-Rong Sun,^d and Jian-Ping Lang^{*a,b}

^a College of Chemistry, Chemical Engineering and Materials Science, Soochow University, Suzhou 215123, People's Republic of China. Fax: +86 512 65882865; Tel: +86 512 65882865; E-mail: jplang@suda.edu.cn

^b State Key Laboratory of Organometallic Chemistry, Shanghai Institute of Organic Chemistry, Chinese Academy of Sciences, Shanghai 200032, People's Republic of China

^c Department of Physics, East China Normal University, Shanghai 200062, People's Republic of China

Contents

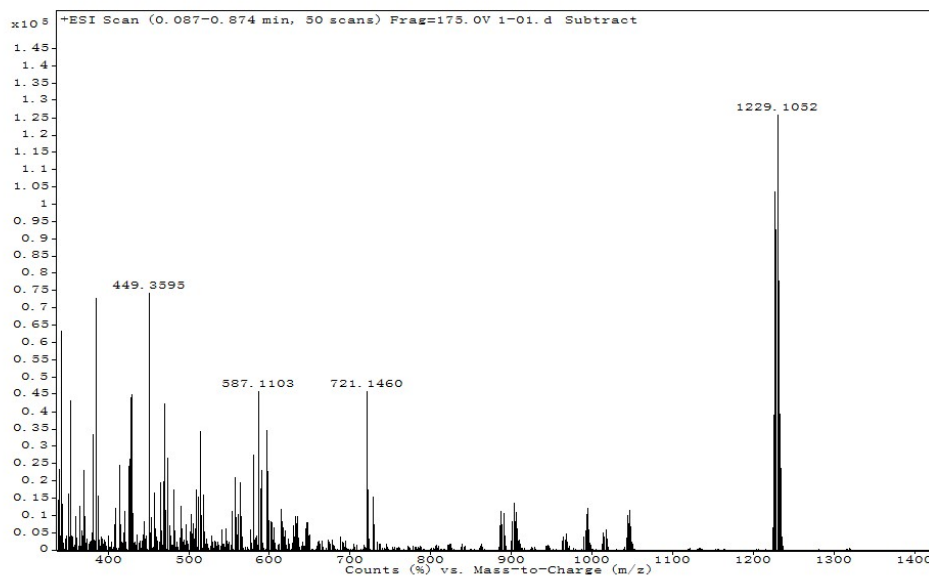
Figure S1. (a) The positive-ion ESI mass spectrum of **2**. (b) The positive-ion ESI mass spectrum of **3**. (c) The positive-ion ESI mass spectrum of **4**. (d) The positive-ion ESI mass spectrum of **5**. (e) The positive-ion ESI mass spectrum of **6**. (e) The positive-ion ESI mass spectrum of **7**.……………S3

Figure S2. (a) The calculated isotope pattern (top) and the positive-ion ESI mass spectrum (bellow) of the $[\text{Tp}^*\text{WS}_3\text{Cu}_2(\text{dppm})_2]^+$ cation of **3**. (b) The calculated isotope pattern (top) and the positive-ion ESI mass spectrum (bellow) of the $[\text{Tp}^*\text{WS}_3\text{Cu}_2(\text{dppps})]^+$ cation of **4**. (c) The calculated isotope pattern (top) and the positive-ion ESI mass spectrum (bellow) of the $[\text{Tp}^*\text{WS}_3\text{Cu}_2(\text{bdppmapy})]^+$ cation of **5**. (d) The calculated isotope pattern (top) and the positive-ion ESI mass spectrum (bellow) of the $\{[\text{Tp}^*\text{WS}_3\text{Cu}_2]_2(\text{dppps})\}^{2+}$ dication of **7**.……………S6

Figure S3. View of the cluster dication of **6** with a labelling scheme and 50% thermal ellipsoids. All H atoms were omitted for clarity.……………S7

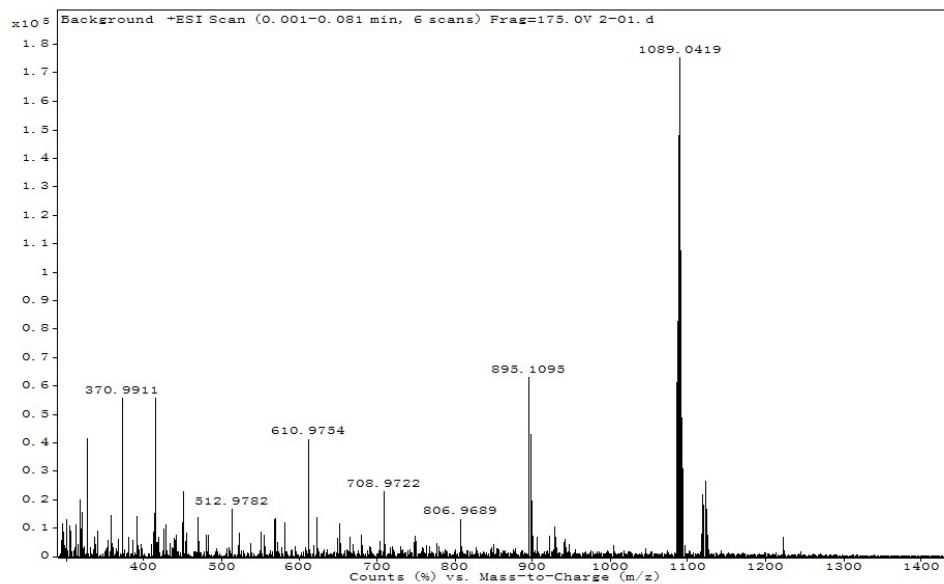
Figure S4. (a) The DFWM signal for the DMF solutions of 6×10^{-5} M for **3**. (b) The DFWM signal for the DMF solutions of 6×10^{-5} M for **4**. (c) The DFWM signal for the DMF solutions of 6×10^{-5} M for **5**. (d) The DFWM signal for the DMF solutions of 6×10^{-5} M for **6**. (a) The DFWM signal for the DMF solutions of 6×10^{-5} M for **7** with 80 fs and 1.5 mm cell. The black solid squares are experimental data, and the red solid curves are the theoretical fit.……………S8

Sample Name	1	Position	Vial 1	Instrument Name	Instrument 1	User Name	
Inj Vol	0	InjPosition		SampleType	Sample	IRM Calibration Status	Success
Data Filename	1-01.d	ACQ Method		Comment		Acquired Time	2013/10/28 10



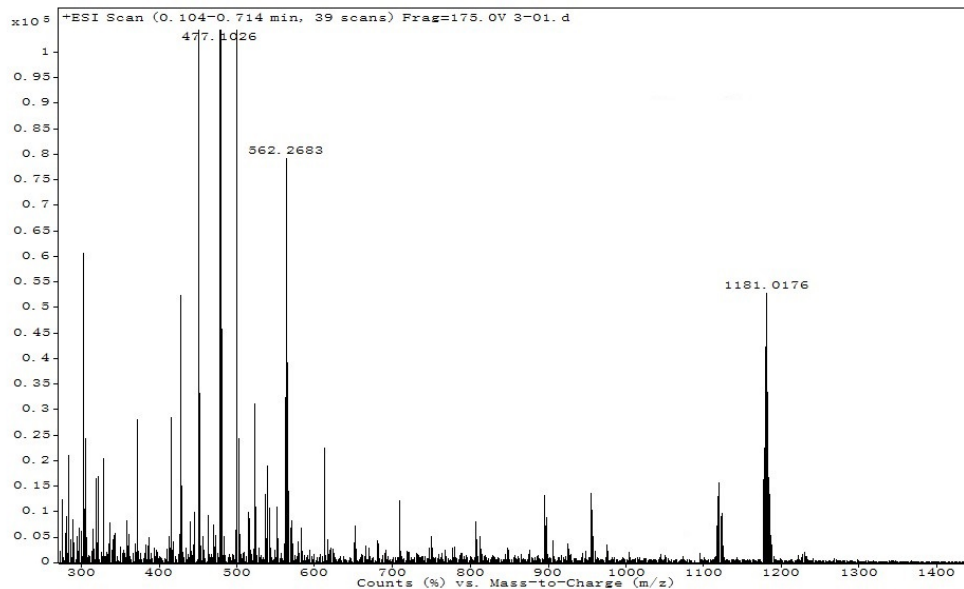
(a)

Sample Name	2	Position	Vial 1	Instrument Name	Instrument 1	User Name	
Inj Vol	0	InjPosition		SampleType	Sample	IRM Calibration Status	Success
Data Filename	2-01.d	ACQ Method		Comment		Acquired Time	2013/10/28 10



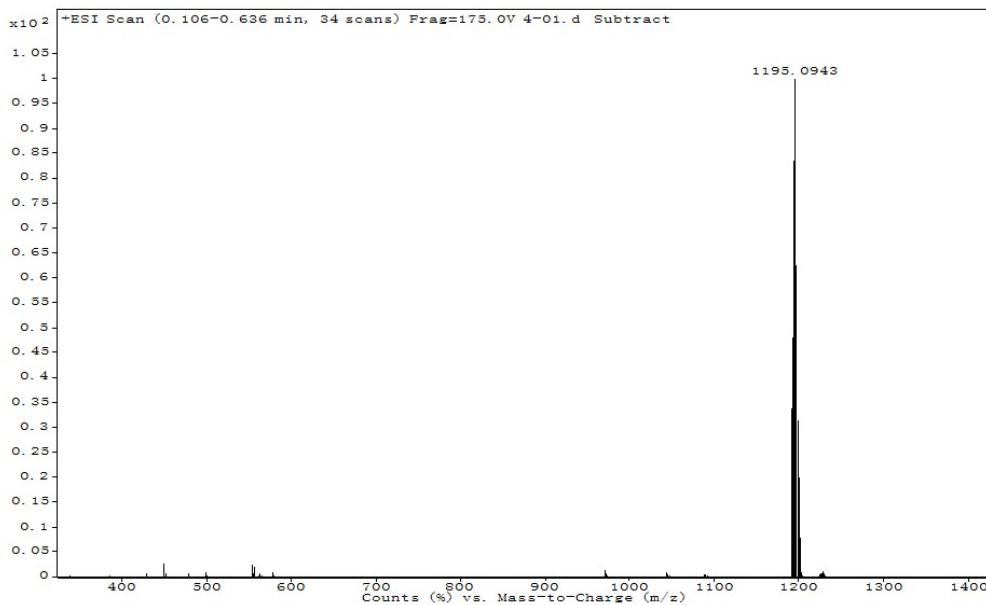
(b)

Sample Name	3	Position	Vial 1	Instrument Name	Instrument 1	User Name	
Inj Vol	0	InjPosition		SampleType	Sample	IRM Calibration Status	Success
Data Filename	3-01.d	ACQ Method		Comment		Acquired Time	2013/10/28 10



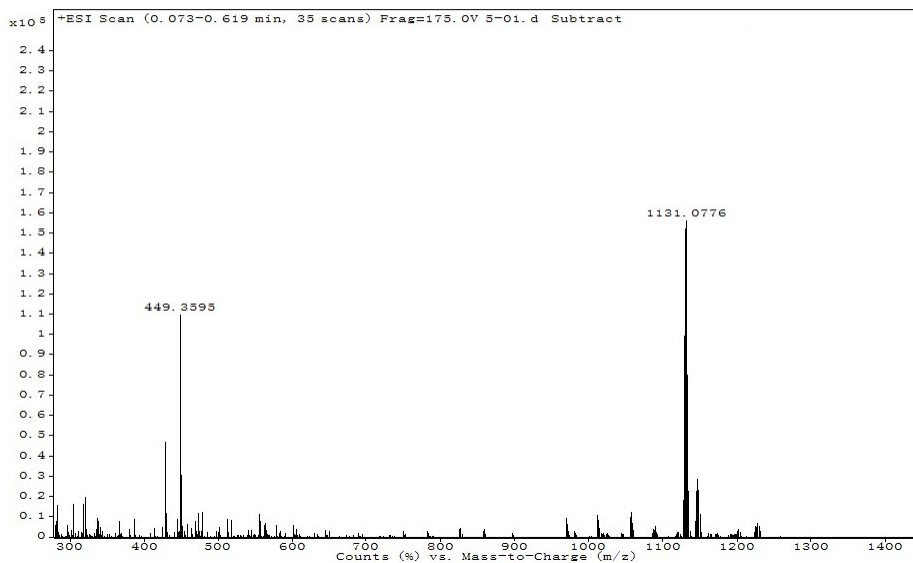
(c)

Sample Name	4	Position	Vial 1	Instrument Name	Instrument 1	User Name	
Inj Vol	0	InjPosition		SampleType	Sample	IRM Calibration Status	Success
Data Filename	4-01.d	ACQ Method		Comment		Acquired Time	2013/10/28 10



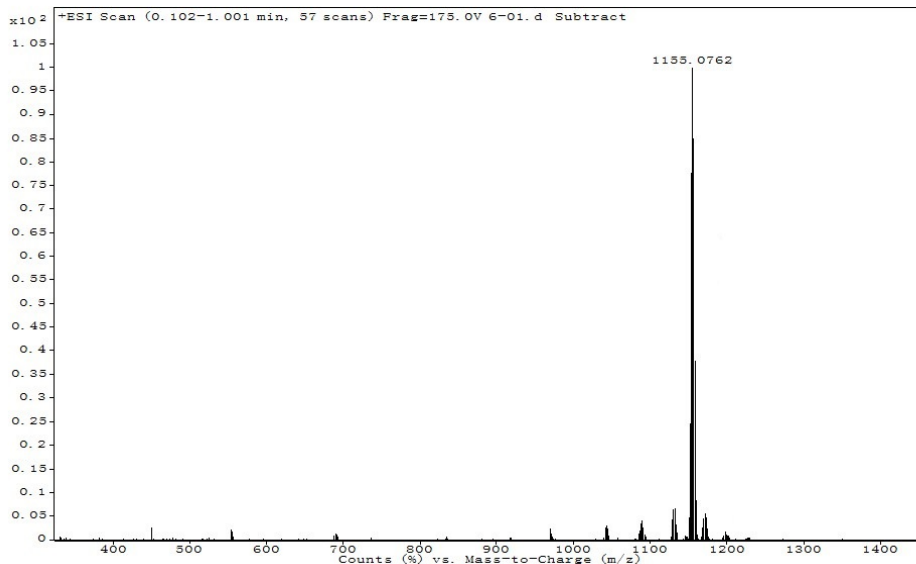
(d)

Sample Name	5	Position	Vial 1	Instrument Name	Instrument 1	User Name	
Inj Vol	0	Inj Position		Sample Type	Sample	IRM Calibration Status	Success
Data Filename	5-01.d	ACQ Method		Comment		Acquired Time	2013/10/28 10



(e)

Sample Name	6	Position	Vial 1	Instrument Name	Instrument 1	User Name	
Inj Vol	0	Inj Position		Sample Type	Sample	IRM Calibration Status	Success
Data Filename	6-01.d	ACQ Method		Comment		Acquired Time	2013/10/28 10



(f)

Figure S1. (a) The positive-ion ESI mass spectrum of **2**. (b) The positive-ion ESI mass spectrum of **3**. (c) The positive-ion ESI mass spectrum of **4**. (d) The positive-ion ESI mass spectrum of **5**. (e) The positive-ion ESI mass spectrum of **6**. (f) The positive-ion ESI mass spectrum of **7**.

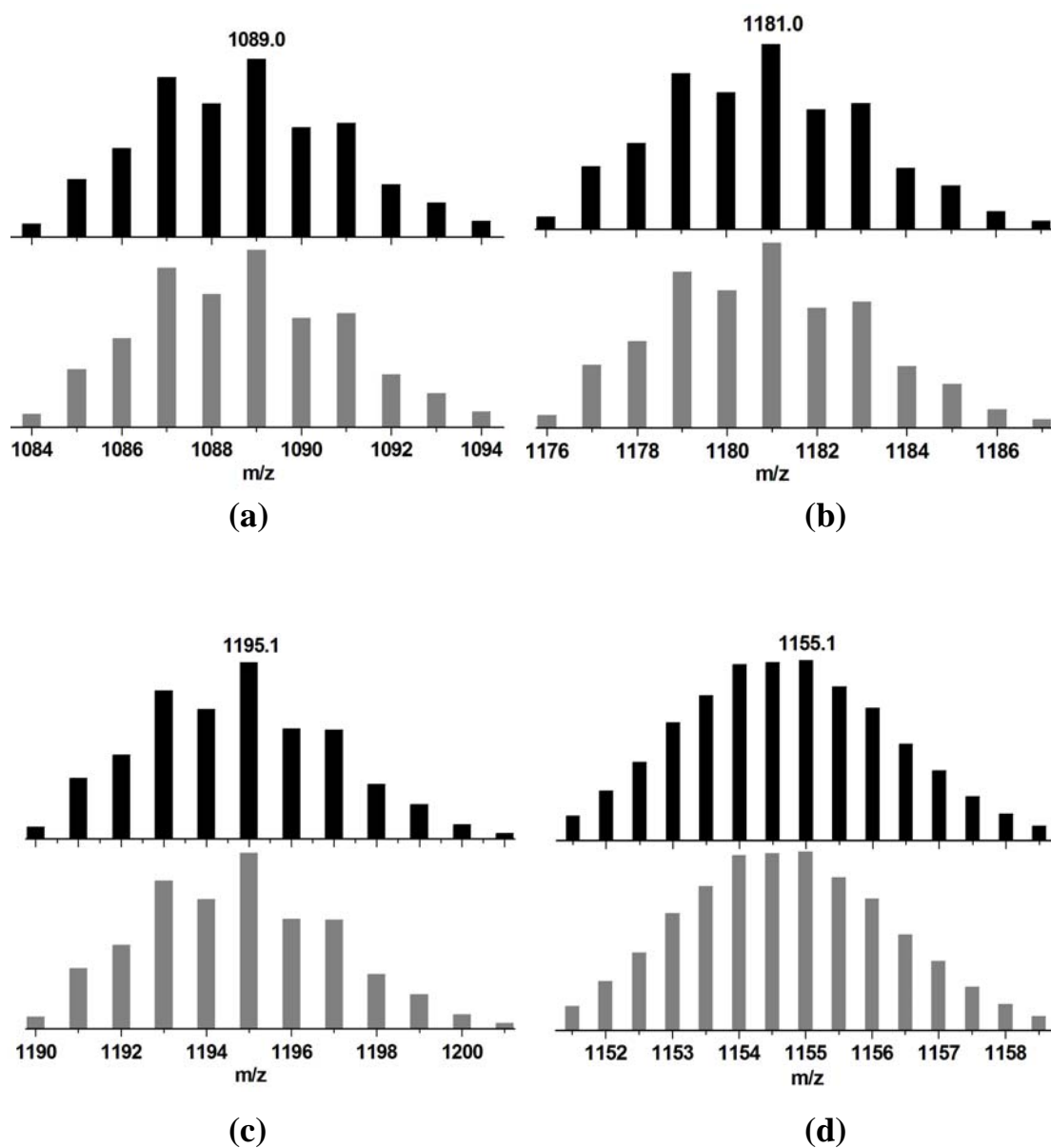


Figure S2. (a) The calculated isotope pattern (top) and the positive-ion ESI mass spectrum (bellow) of the $[\text{Tp}^*\text{WS}_3\text{Cu}_2(\text{dppm})]^+$ cation of **3**. (b) The calculated isotope pattern (top) and the positive-ion ESI mass spectrum (bellow) of the $[\text{Tp}^*\text{WS}_3\text{Cu}_2(\text{dppps})]^+$ cation of **4**. (c) The calculated isotope pattern (top) and the positive-ion ESI mass spectrum (bellow) of the $[\text{Tp}^*\text{WS}_3\text{Cu}_2(\text{bdppmapy})]^+$ cation of **5**. (d) The calculated isotope pattern (top) and the positive-ion ESI mass spectrum (bellow) of the $\{[\text{Tp}^*\text{WS}_3\text{Cu}_2]_2(\text{dpppda})\}^{2+}$ dication of **7**.

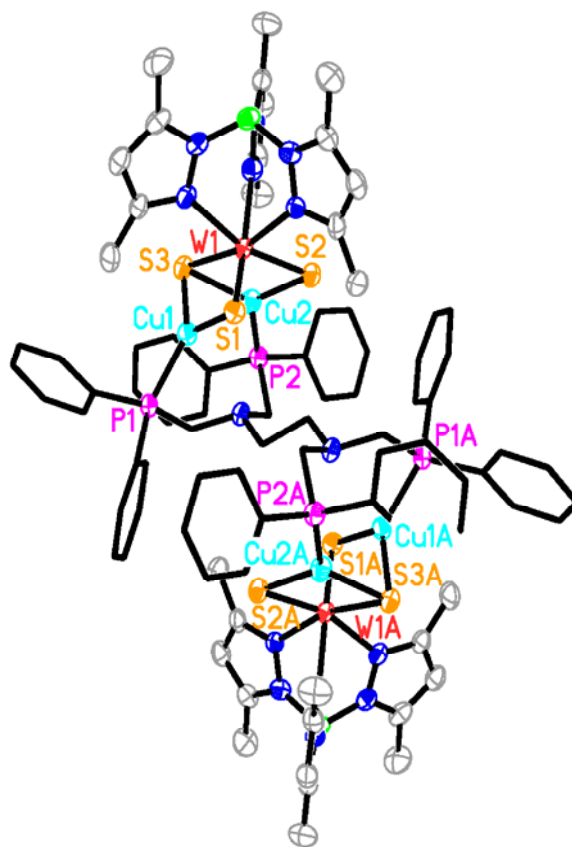


Figure S3. View of the cluster dication of **6** with a labelling scheme and 50% thermal ellipsoids. All H atoms were omitted for clarity.

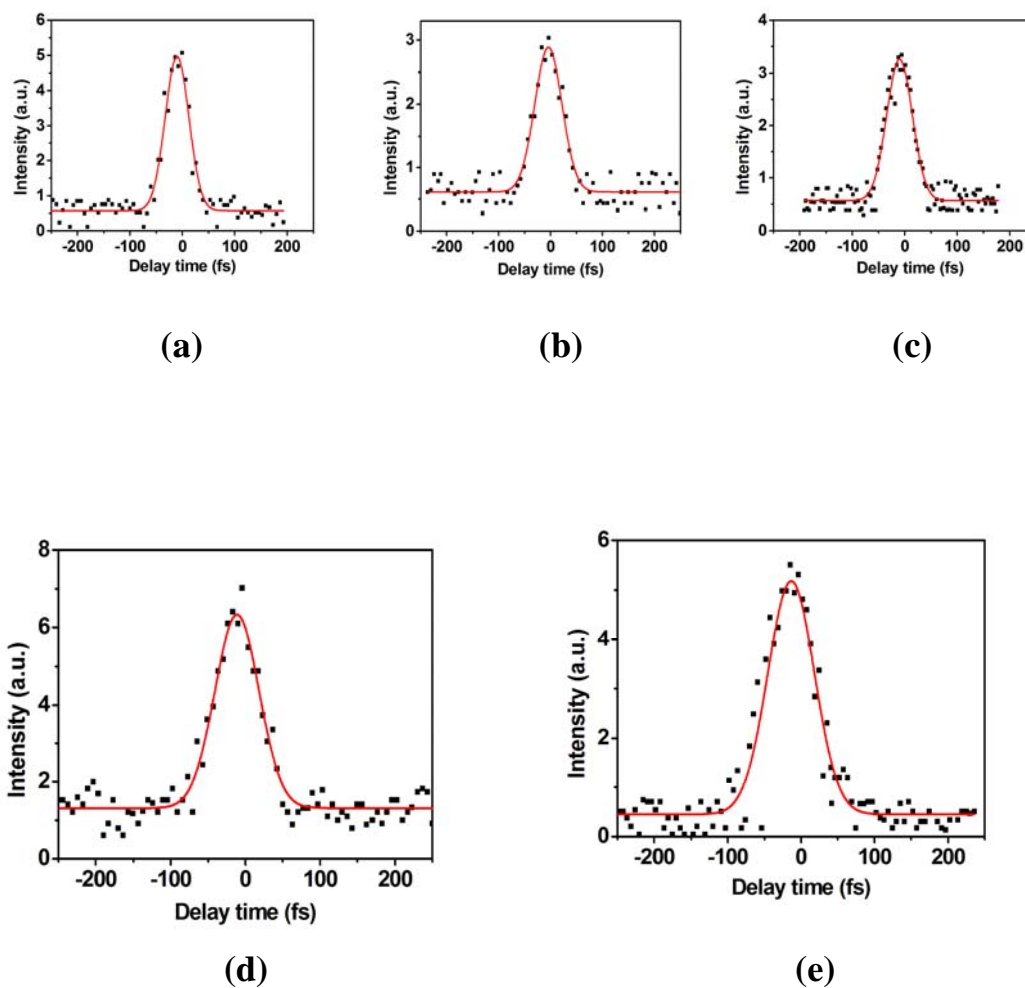


Figure S4. (a) The DFWM signal for the DMF solutions of 6×10^{-5} M for **3**. (b) The DFWM signal for the DMF solutions of 6×10^{-5} M for **4**. (c) The DFWM signal for the DMF solutions of 6×10^{-5} M for **5**. (d) The DFWM signal for the DMF solutions of 6×10^{-5} M for **6**. (e) The DFWM signal for the DMF solutions of 6×10^{-5} M for **7** with 80 fs and 1.5 mm cell. The black solid squares are experimental data, and the red solid curves are the theoretical fit.