

SUPPORTING INFORMATION FOR:

Epitaxial growth of silver chloride crystals on bismuth oxychloride

Boris B. Bokhonov

Institute of Solid State Chemistry, Siberian Branch, Russian Academy Sciences, Kutateladze 18, 630128 Novosibirsk, Russia

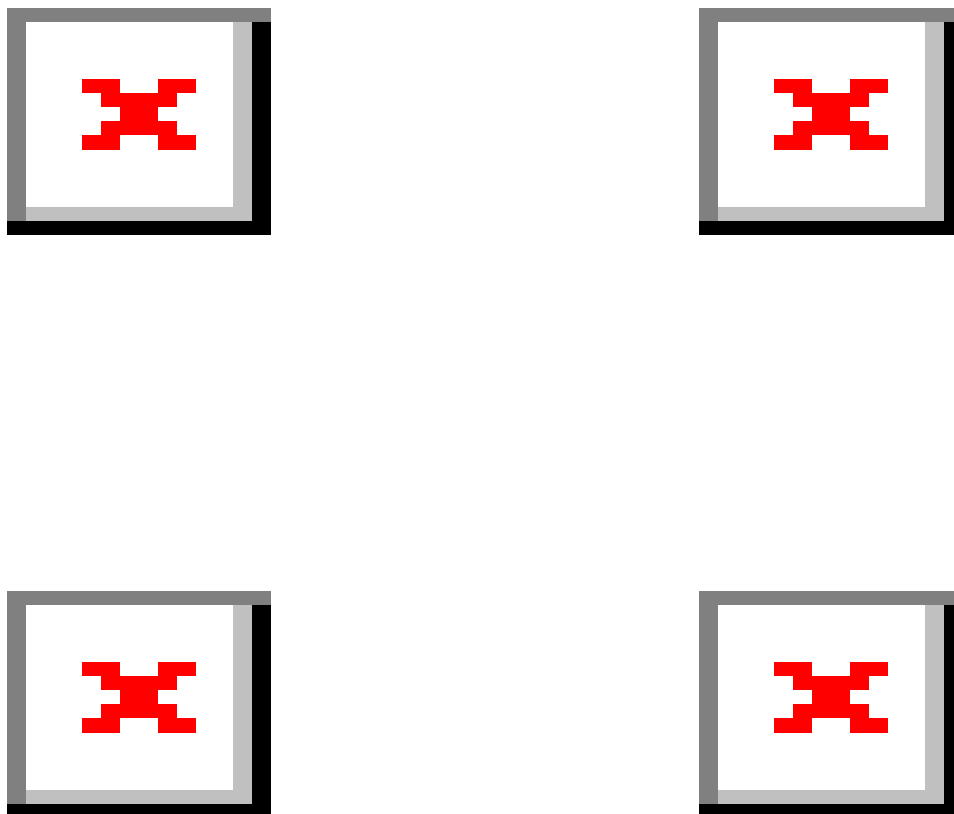


Figure 1S. SEM images of degradation of BiOCl/AgCl heterostructures during electromicroscopic investigation (a) -30s, (b) -120s, (c) -180s, (d) -240s.

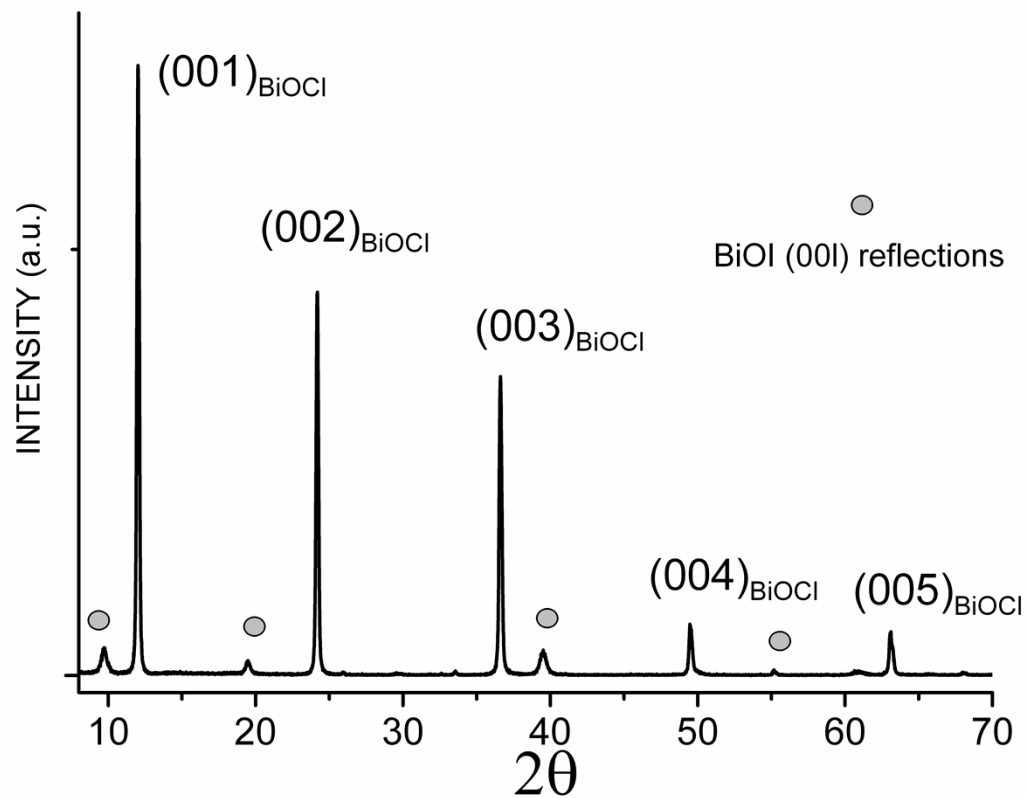


Figure 2S. The XRD patterns of the reaction products of the BiOCl crystals treated by NaI solution show reflections of the BiOI phase along with those of the BiOCl phase.

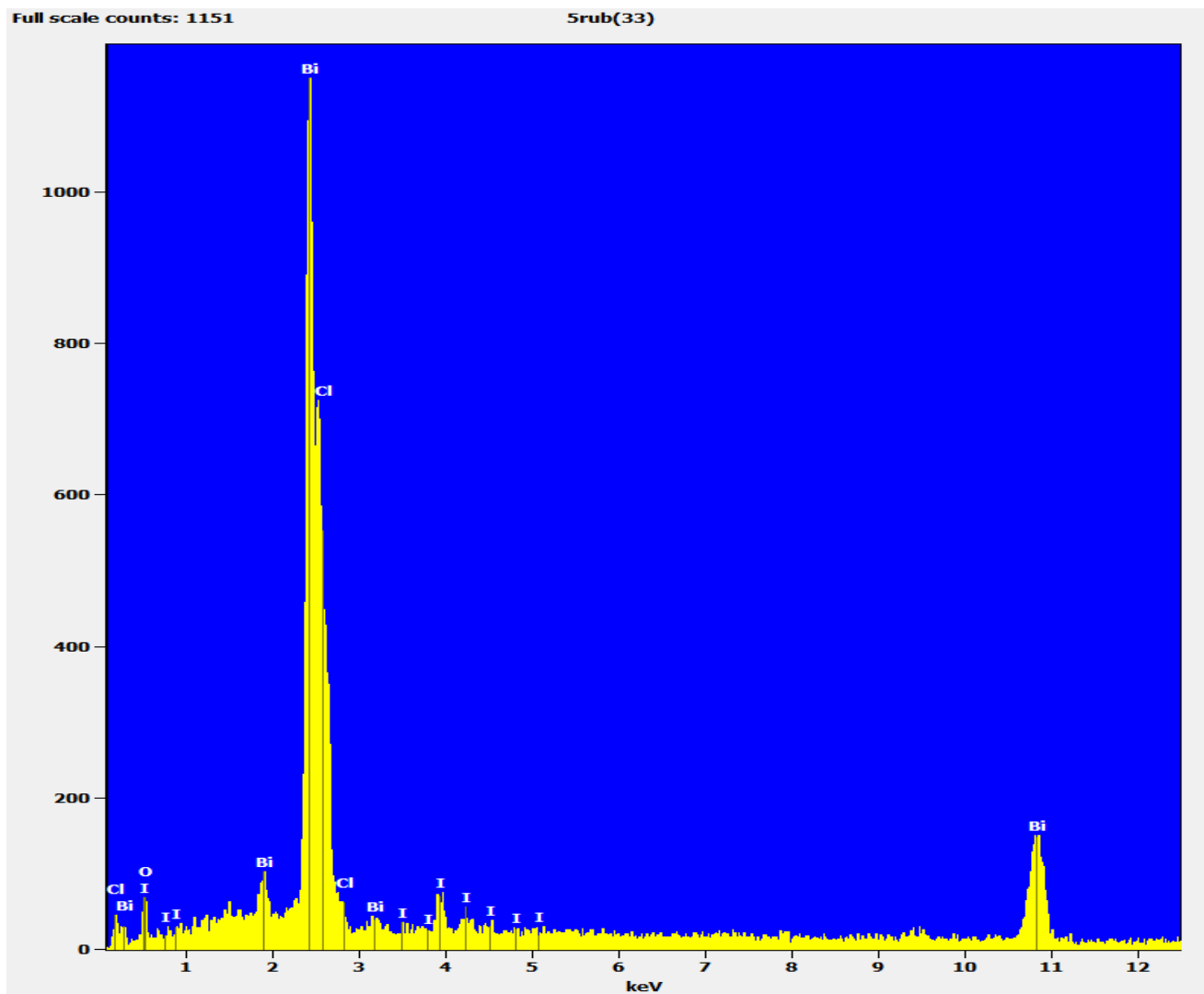


Figure 3S. The EDS spectrum of the BiOCl crystals treated by NaI solution.