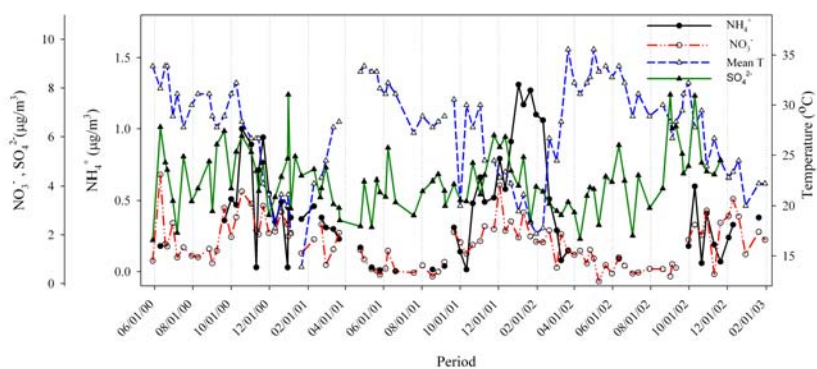


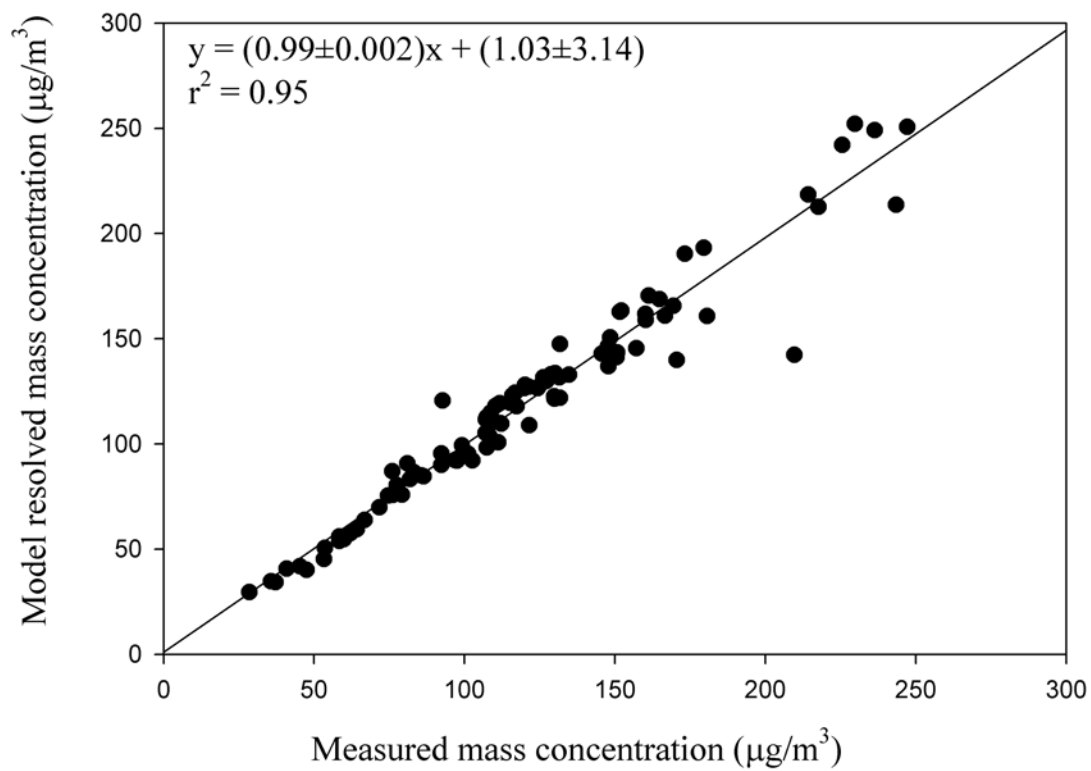
Supplemental Table S1. Number of factors 'n' vs object function 'Q' for the base case. Expected Q value ($Q_{\text{theoretical}} = 93 * 17 - n * 93$)

| n | Q |
|---|---------|
| 2 | 4959.51 |
| 3 | 3779.40 |
| 4 | 2329.37 |
| 5 | 1608.85 |
| 6 | 1074.48 |
| 7 | 711.32 |
| 8 | 513.55 |
| 9 | 375.62 |

Supplemental Figure S1. Time series plot of NH_4^+ , NO_3^- , and temperature measured at Ahmedabad.



Supplemental Figure S2. PMF resolved mass concentration vs measured TSP mass.



Supplemental Figure S3. NOAA HYSPLIT five-day back trajectory ending on 26 April, 2002.

