

1  
2  
3  
4  
5  
6  
7  
8  
9  
10  
11  
12  
13  
14  
15

## Supplementary Information

### **One-year measurement of organic and elemental carbon in size-segregated atmospheric aerosol at a coastal and suburban site in Southeast China**

Zhenchuan Niu <sup>a</sup>, Fuwang Zhang <sup>a</sup>, Xiangrui Kong <sup>b</sup>, Jinsheng Chen <sup>a,\*</sup>, Liqian Yin <sup>a</sup>  
and Lingling Xu <sup>a</sup>

<sup>a</sup> *Key Lab of Urban Environment and Health, Institute of Urban Environment, Chinese Academy of Sciences, Xiamen 361021, China*

<sup>b</sup> *Department of Chemistry, Atmospheric Science, University of Gothenburg, SE-412 96, Gothenburg, Sweden*

\*Corresponding author phone/fax: +86 592 6190765; e-mail address: jschen@iue.ac.cn (J.S. Chen)

16 **Figure Captions**

17 **Fig. S1.** Temporal variations of the contributions of carbonaceous fractions to  
18 particulate matter mass in  $PM_{2.5}$ .

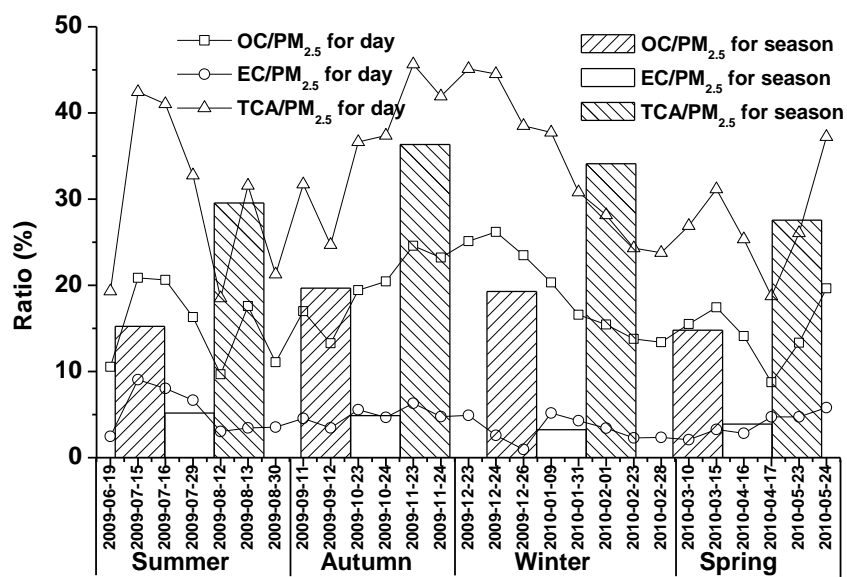
19 **Fig. S2.** Typical back-trajectories of air masses at the sampling site: summer (a),  
20 autumn (b), winter (c), spring (d).

21 **Fig. S3.** Correlation of organic carbon and elemental carbon in  $PM_{2.5}$  at the sampling  
22 site.

23 **Fig. S4.** Temporal variations of ratios of organic carbon to elemental carbon and  
24 concentrations of secondary organic carbon in  $PM_{2.5}$  at the sampling site.

25

26



27

28

Fig. S1.

29

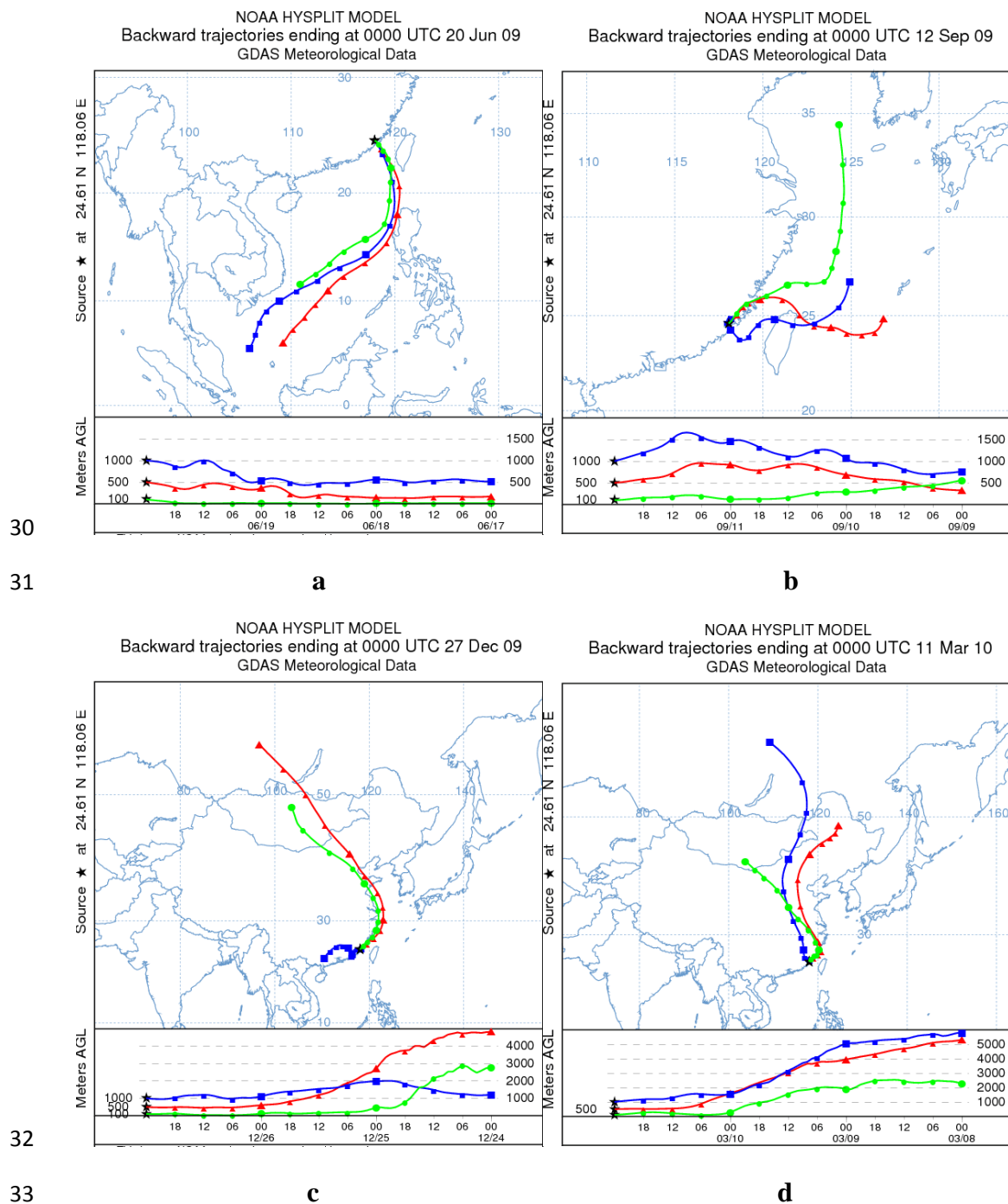
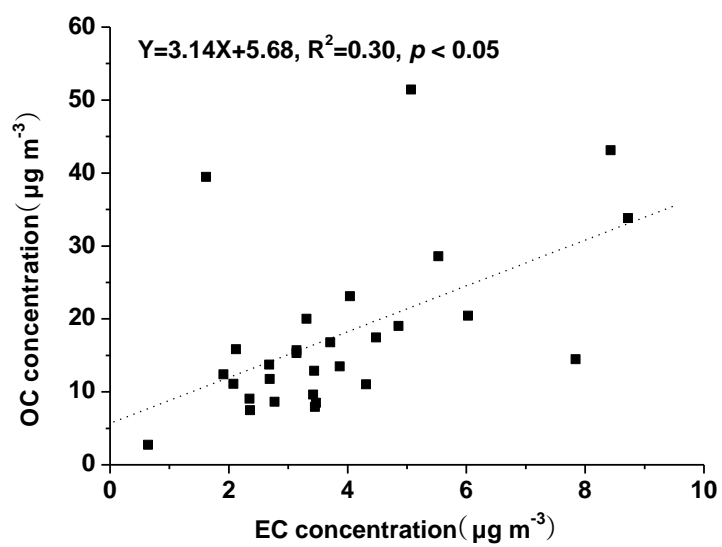


Fig. S2.

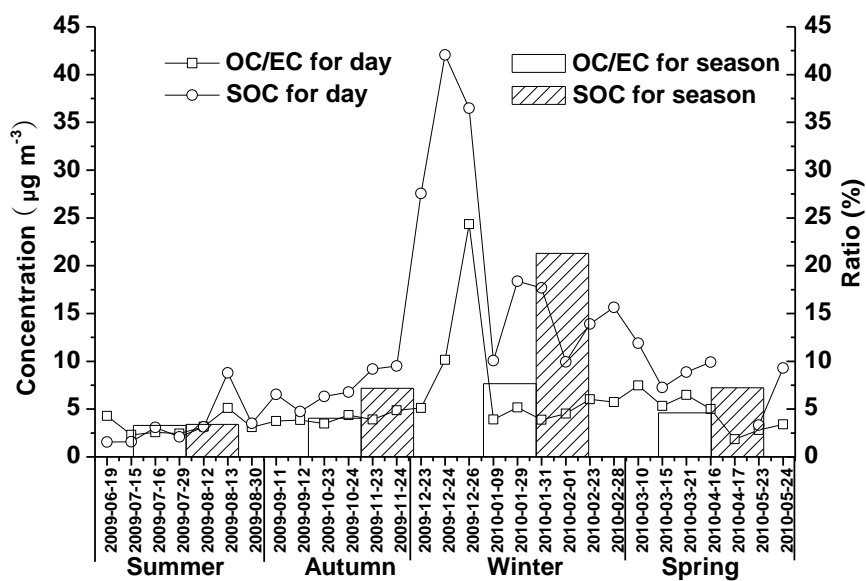


35

36

37

Fig. S3.



38

39

40

Fig. S4.