

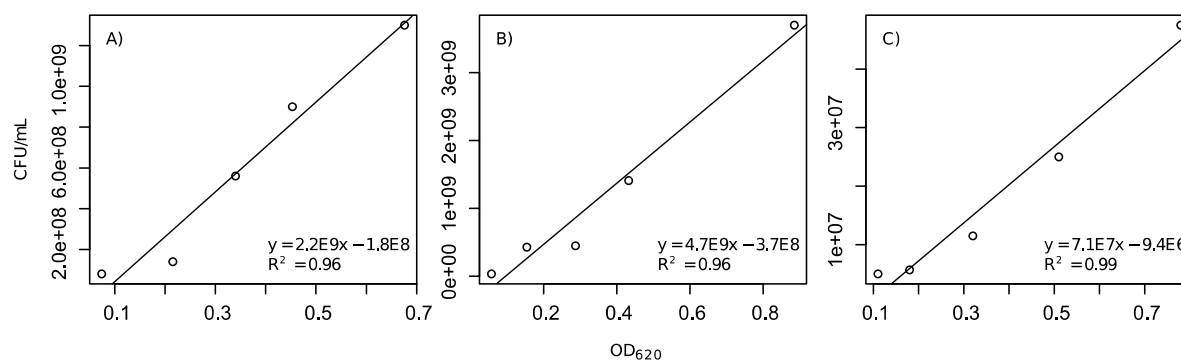
1 SUPPLEMENTARY INFORMATION

2 The Long-Term Effects of Phage Concentration on the Inhibition of Planktonic Bacterial  
3 Cultures

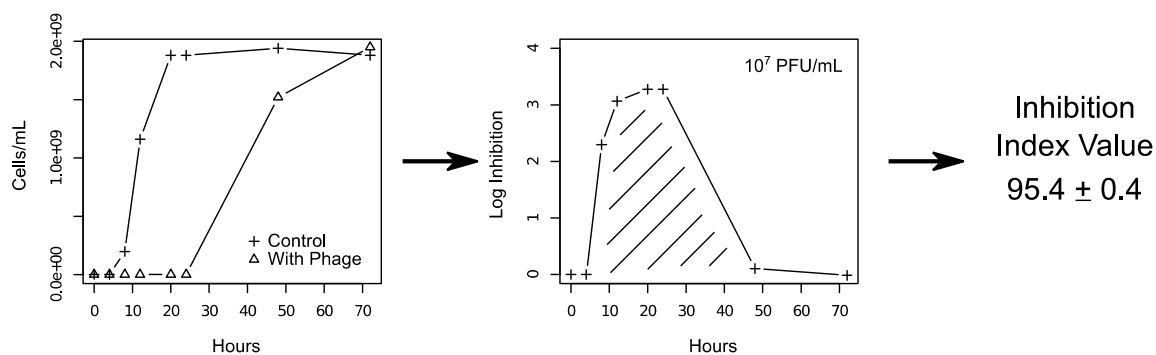
4  
5 Thomas O. Worley-Morse, Lucy Zhang, and Claudia K. Gunsch\*

6 Department of Civil and Environmental Engineering, Duke University, Box 90287, Durham, NC  
7 27708, USA

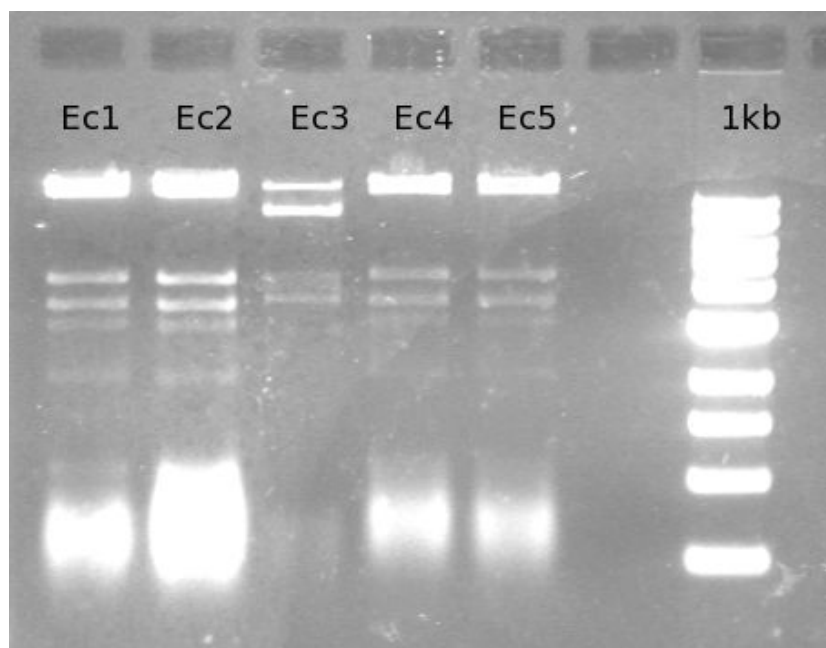
8  
9 \*Correspondence author phone: 919-660-5208; fax: 919-660-5219; e-mail: ckgunsch@duke.edu



12  
13 **Fig. SI 1.** Calibration curves for (A) *E. coli*, (B) *P. aeruginosa*, and (C) *B. cereus* relating  
14 OD<sub>620</sub> to CFU/mL.



16 **Fig. SI 2.** Schematic for the creation of the inhibition index. Inhibition indexes were created by  
17 plotting log inhibition time series and calculating the area under the curve for the 72 h duration  
18 of the experiment.



19  
20 **Fig. SI 3.** Various coliphages isolated from the North Durham Water Reclamation Facility. A  
21 phage containing a similar restriction patterns (Ec1, Ec2, Ec4, and Ec5) was isolated four times  
22 over the course of three months. All nucleic acids were digested with *Bam*HI. For the  
23 experiments enclosed Ec3 in the gel was called Ec2 and the Ec2 from the gel was not used.