

Supplementary Information

S-1. Repeatability and reusability of photocatalyst.

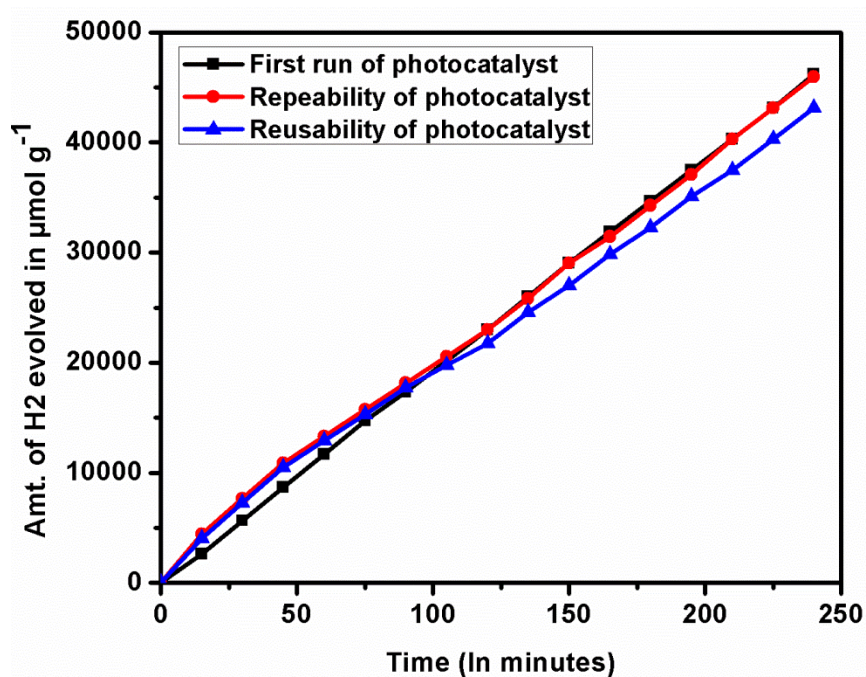
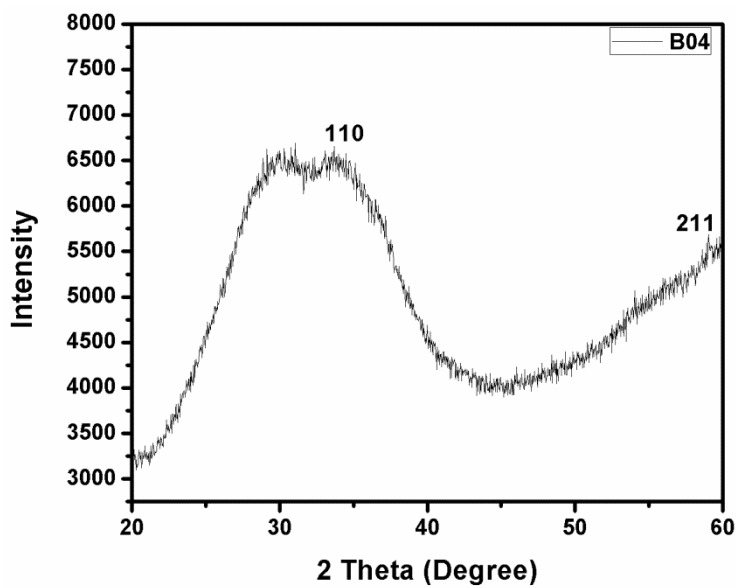


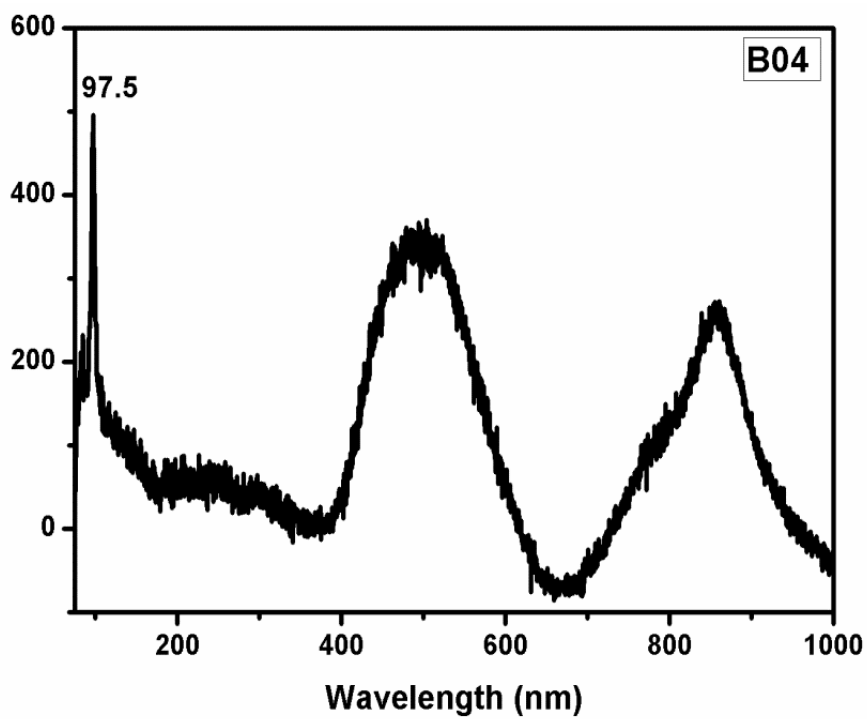
Figure S-1 . Photocatalytic activity for hydrogen evolution of Bi doped germanates glass (B03).

Photocatalyst	Amount of hydrogen evolved in $\mu\text{mol h}^{-1} \text{g}^{-1}$ for first run	Amount of hydrogen evolved in $\mu\text{mol h}^{-1} \text{g}^{-1}$ for second run (for repeatability study)	Amount of hydrogen evolved in $\mu\text{mol h}^{-1} \text{g}^{-1}$ for reused run (For reusability study)
B03	11541.22	11490.82	10785.24

S-2. XRD pattern of reused photocatalysts.



S-3. Raman spectra of reused photocatalysts.



S-4. Report of analysis of bismuth by Inductive Coupled Plasma (ICP-OES).

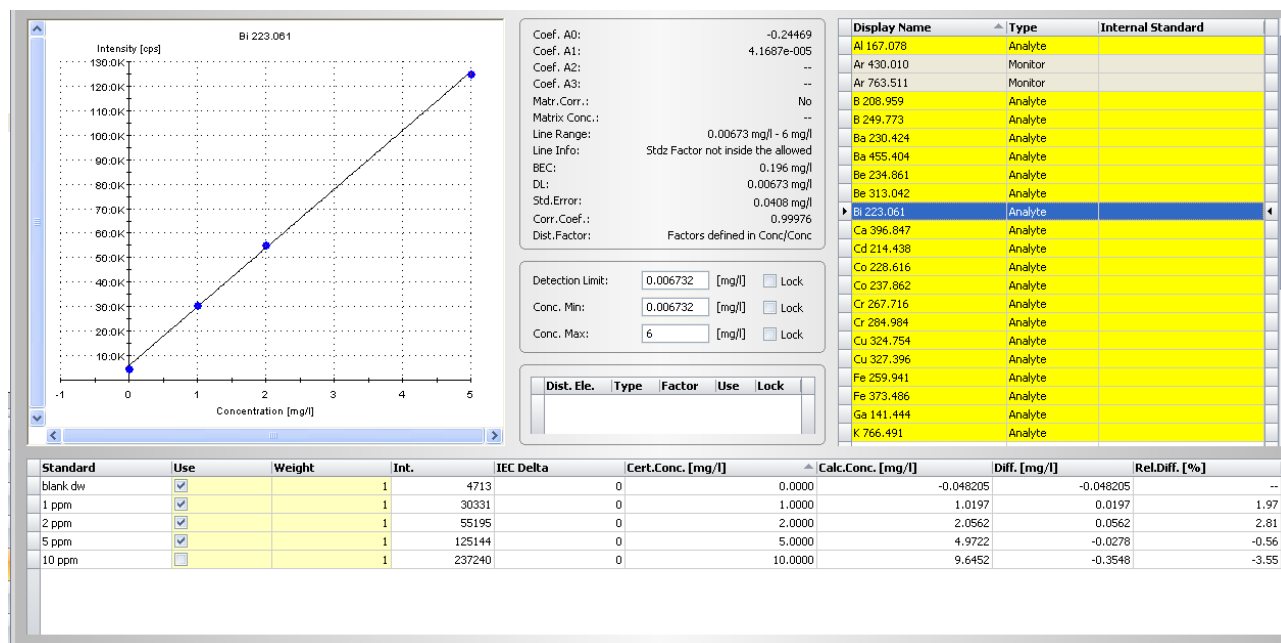


Figure S-4(a): Curve for bismuth in ICP-OES analysis.

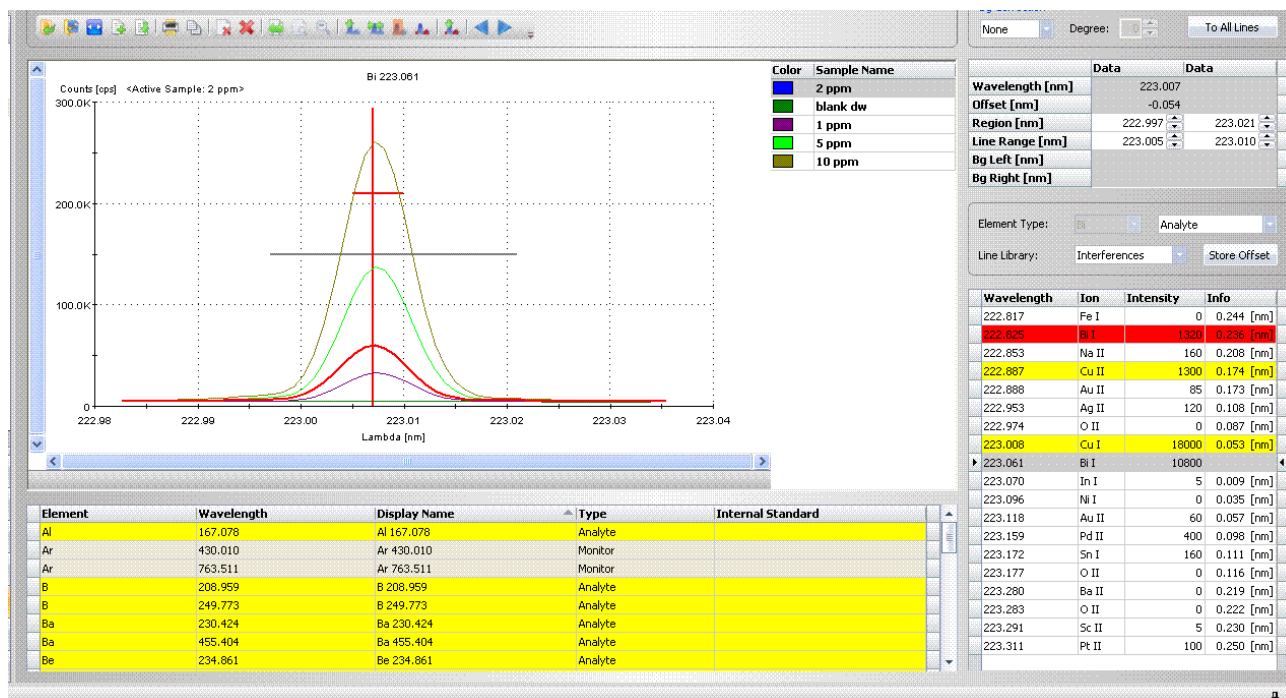


Figure S-4(b): Line definition for bismuth in ICP-OES analysis.

Store Date: 2013-08-21 15:23:12 Recalc Date: Sample Type: Unknown Sample User: Operator Quality: Drifted Method Version: 2011-07-04 14:46:54 Session Id: 2010-10-04 16:11:19 <M>

Sample Name: BIK

Sample	Type	Al	B	Ba	Be	Bi	Ca	Cd	Co	Cr	Cu
		mg/l	mg/l	mg/l	mg/l	mg/l	mg/l	mg/l	mg/l	mg/l	mg/l
BIW	rep !	1.878	5.972	< -0.030	< -0.080	< -0.064	< -0.038	< -0.190	< -0.128	< -0.104	< -0.057
BIK	rep !	> 18.350	> 19.716	< -0.028	< -0.080	< -0.086	< -0.070	< -0.157	< -0.118	< -0.092	< -0.055

Sample	Type	Li	Mg	Mn	Na	Ni	Pb	Se	Sr	Te	Tl
		mg/l	mg/l	mg/l	mg/l	mg/l	mg/l	mg/l	mg/l	mg/l	mg/l
BIW	rep !	0.012	< -0.099	< -0.093	6.811	< -0.098	< -0.175	< -0.143	< -0.040	< -0.264	< -0.222
BIK	rep !	0.019	< -0.115	< -0.090	> 161.920	< -0.117	< -0.123	< -0.124	< -0.040	< -0.264	< -0.023

System
Info Flow

Figure S-4(c): Results of bismuth analysis in ICP-OES analysis.