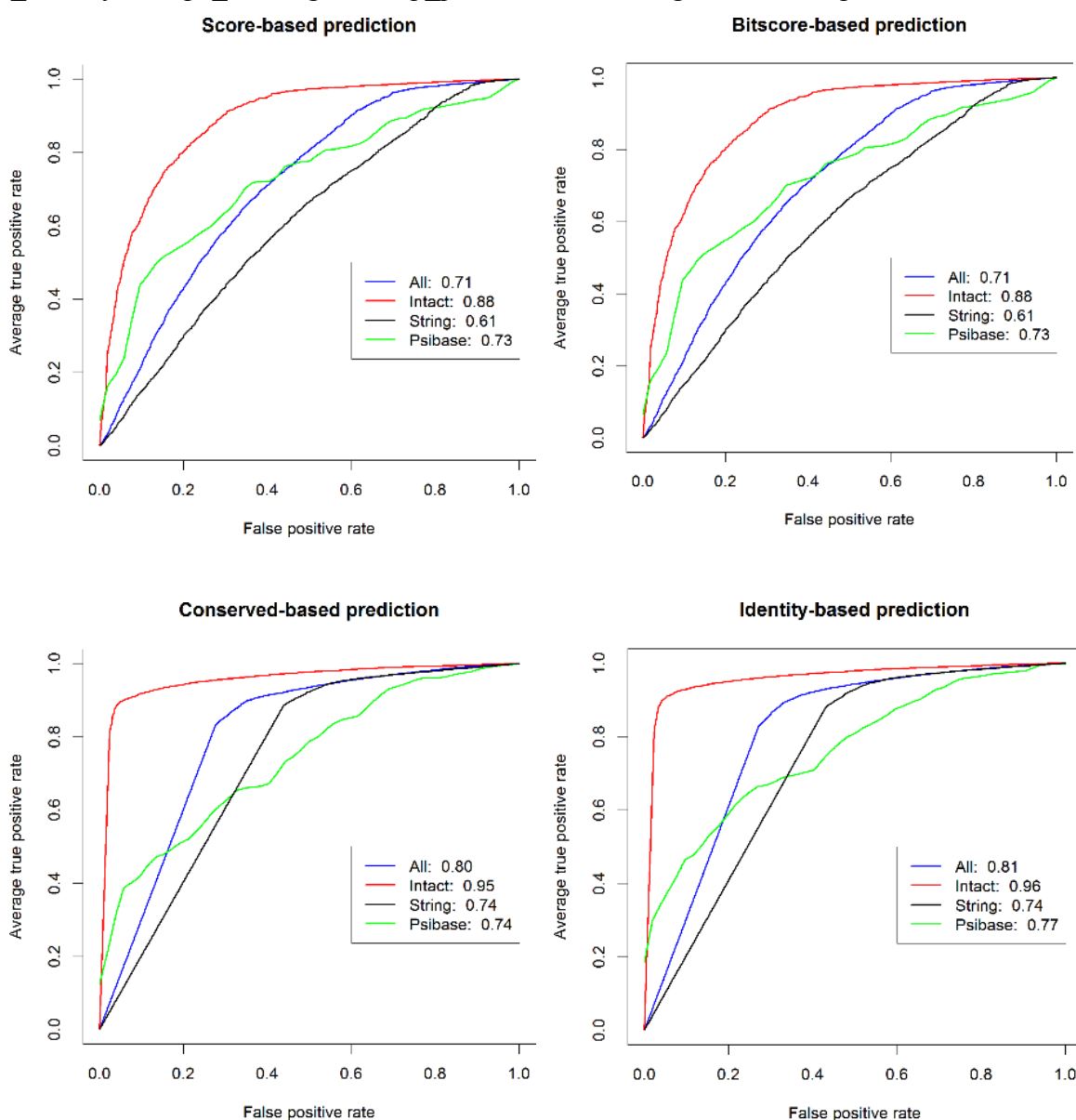
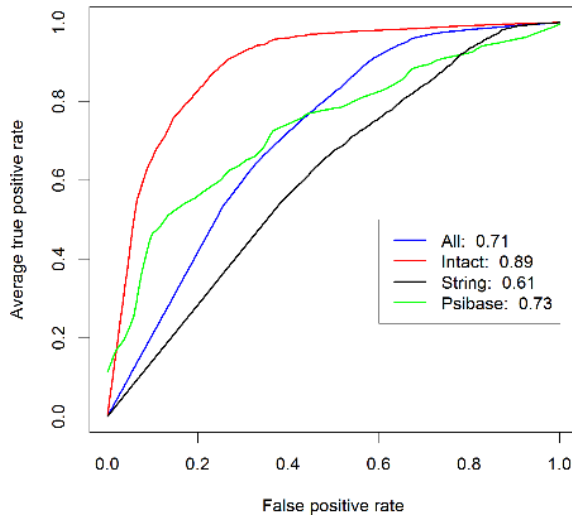


## Supplementary Material

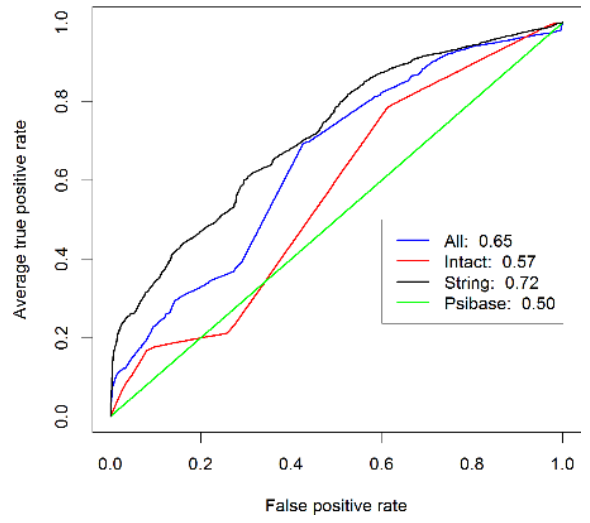
**Figure S6:** ROC curves corresponding to the metrics generated with the Blast+ parameter `num_alignments` set to 20 and minimum interaction pair metric value ( $\min(ab)$ ). Conserved uses the metric  $\text{Conserved}/100 * \text{Coverage}/100$ . Identity uses the metric  $\text{Identity}/100 * \text{Coverage}/100$ . Combined I uses the metric  $\text{pDB score} * \text{qt\_pDB}$ . Combined II uses the metric  $\text{pc\_identity}/100 * \text{pc\_coverage}/100$  for the Intact pDB and the metric  $\text{pc\_identity}/100 * \text{pc\_coverage}/100 * \text{qt\_pDB}/2$  for the String and Psibase pDBs.



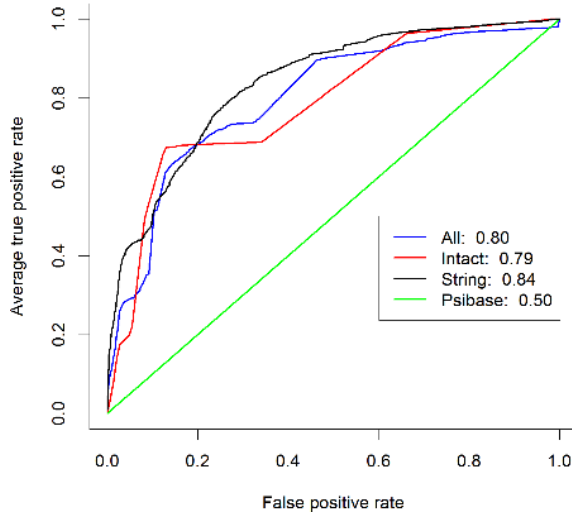
**Expected-based prediction**



**pDB score-based prediction**



**Combined I prediction**



**Combined II prediction**

