

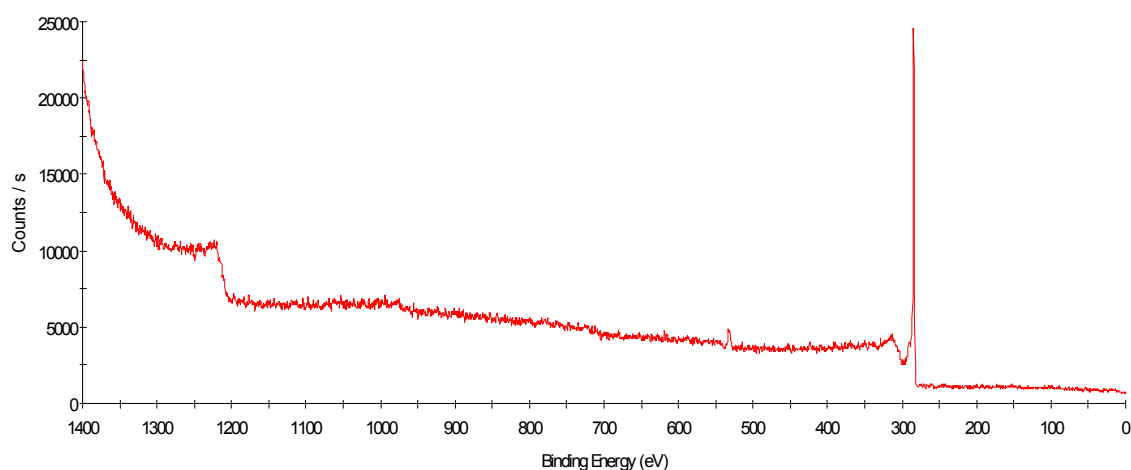
# Supported Metallocene Catalysis as an Efficient Tool for the Preparation of Polyethylene/Carbon Nanotubes Nanocomposites: Effect of the Catalytic System on the Coating Morphology

By Daniel Bonduel et al.

## Electronic supplementary information

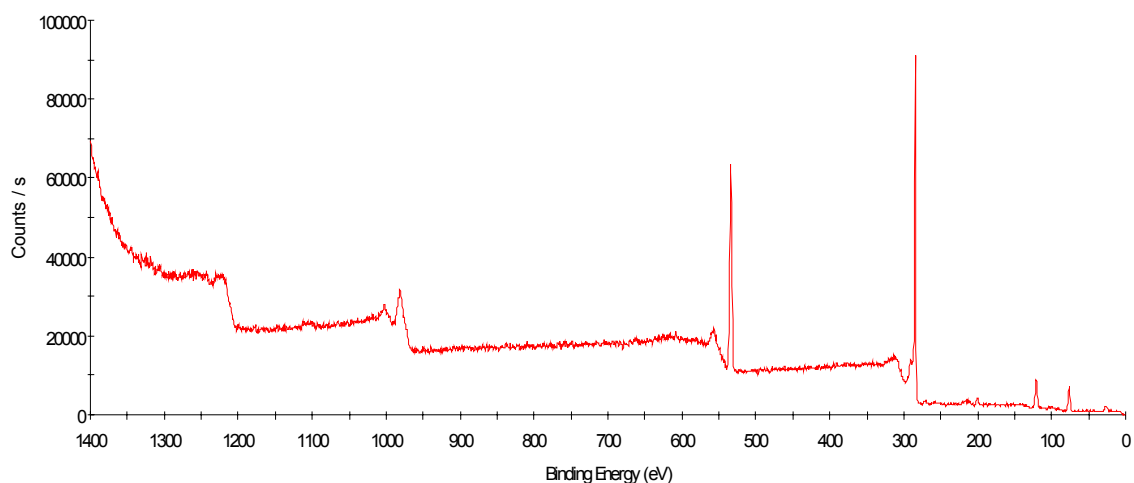
*X-Ray photoelectron spectroscopy (XPS) (Thermo VG scientific, VG ESCALAB 220iXL), analysis of neat MWNTs, MAO-treated MWNTs, and MAO/Cp\*<sub>2</sub>ZrCl<sub>2</sub>-treated MWNTs*

Neat MWNTs



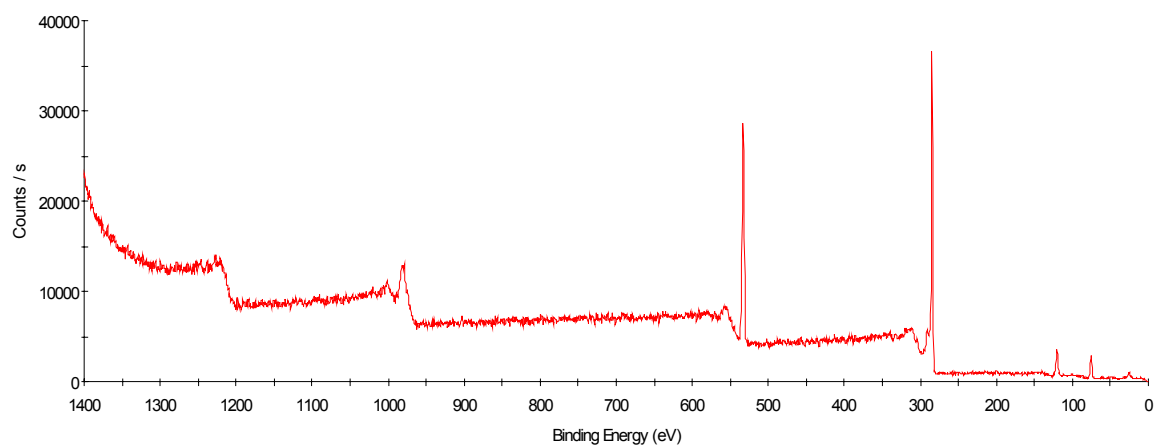
Name	Centre BE	At. %	
O1s	532.60	2.19	
C1s	284.30	97.81	

### MAO-treated MWNTs



Name	Centre BE	At. %	
O1s	534.00	22.58	
Cl2p	200.30	0.78	
C1s	284.40	66.17	
Al2p	76.33	10.47	

### MAO/Cp\*<sub>2</sub>ZrCl<sub>2</sub>-treated MWNTs



Name	Centre BE	At. %	
O1s	533.30	21.34	
Al2p	75.50	10.51	
C1s	284.40	68.15	