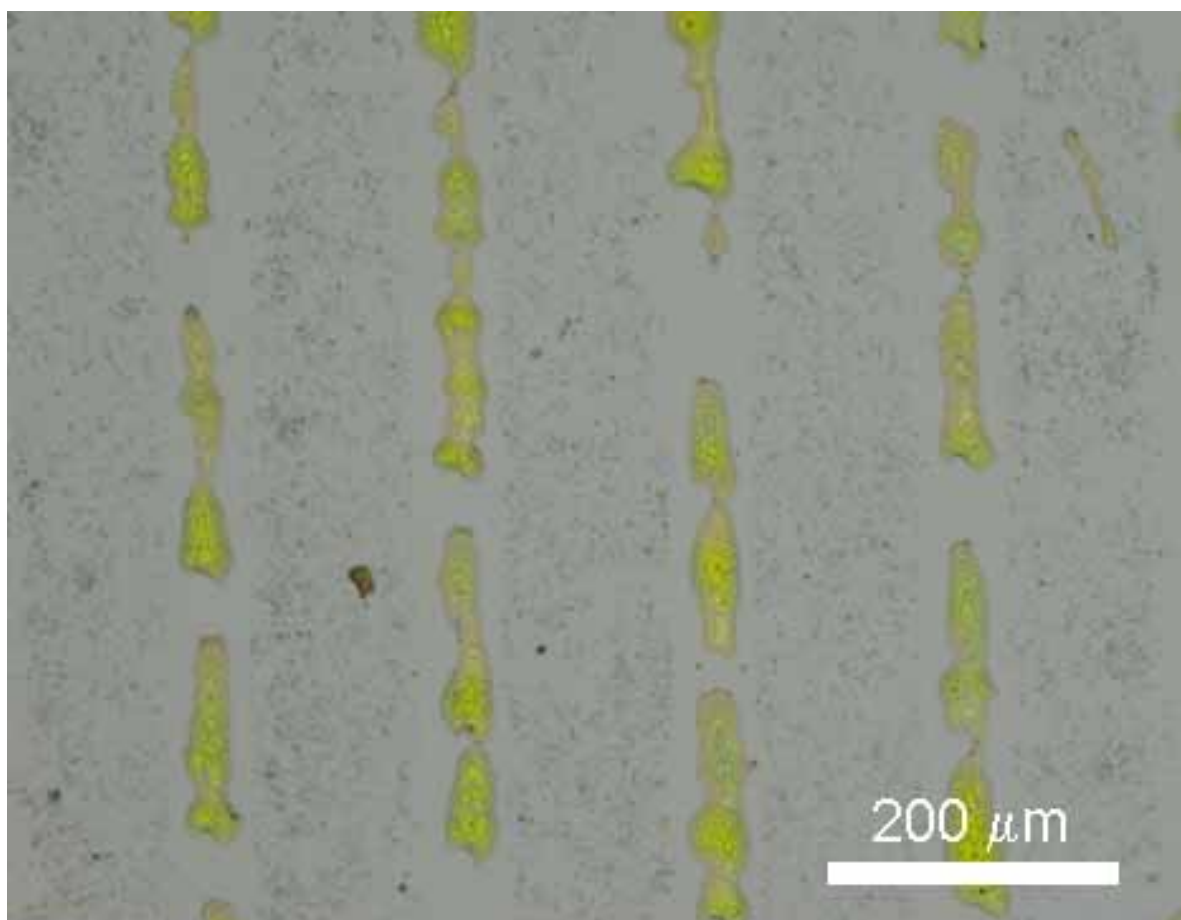


**Rayleigh instability:** images over larger areas for 40  $\mu\text{m}$  wide colloidal crystal arrays fabricated from 192 nm polystyrene spheres at (a) 0.01 vol% and (b) 0.03 vol%. The highlighted areas in (b) indicate behaviour which can be explained by a Rayleigh instability but would be difficult to justify using a second stick–slip mechanism.

(a)



**(b)**

