

Soft route for monodisperse gold nanoparticles confined within SH-functionalized walls of mesoporous silica

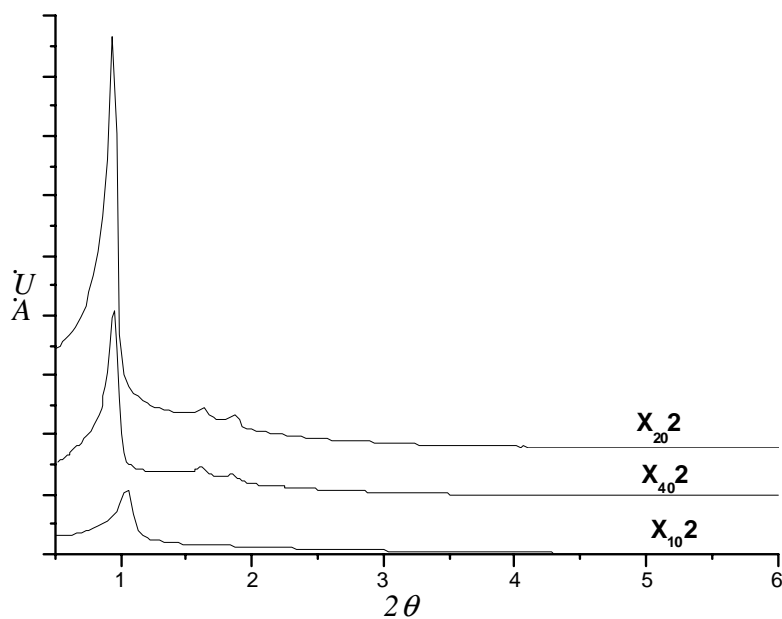
Eric Besson, Ahmad Mehdi*, Catherine Reyé and Robert Corriu

*Institut Charles Gerhardt, Chimie Moléculaire et Organisation du Solide, Université Montpellier, cc 1701. Place E. Bataillon, 34095
Montpellier Cedex 5 France. Fax: 33 4 6714 3852; Tel: 33 4 6714 3038.*

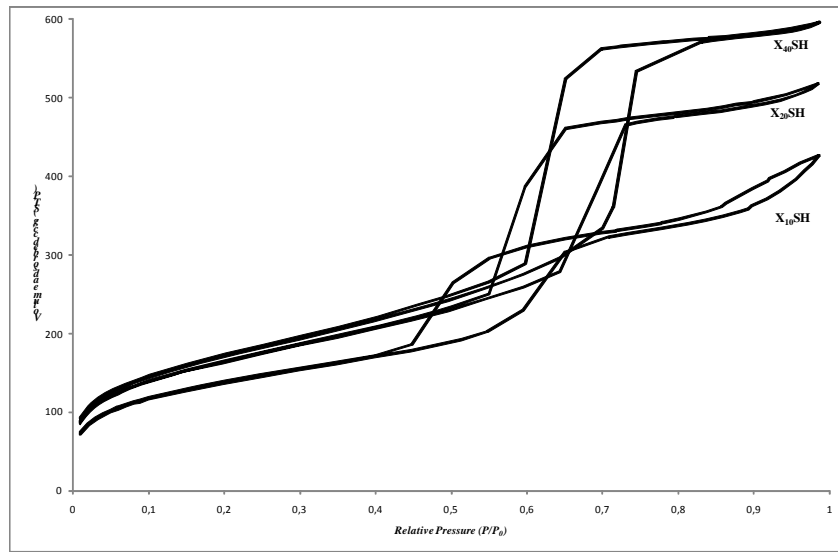
E-mail : ahmad.mehdi@univ-montp2.fr

Electronic Supplementary Information

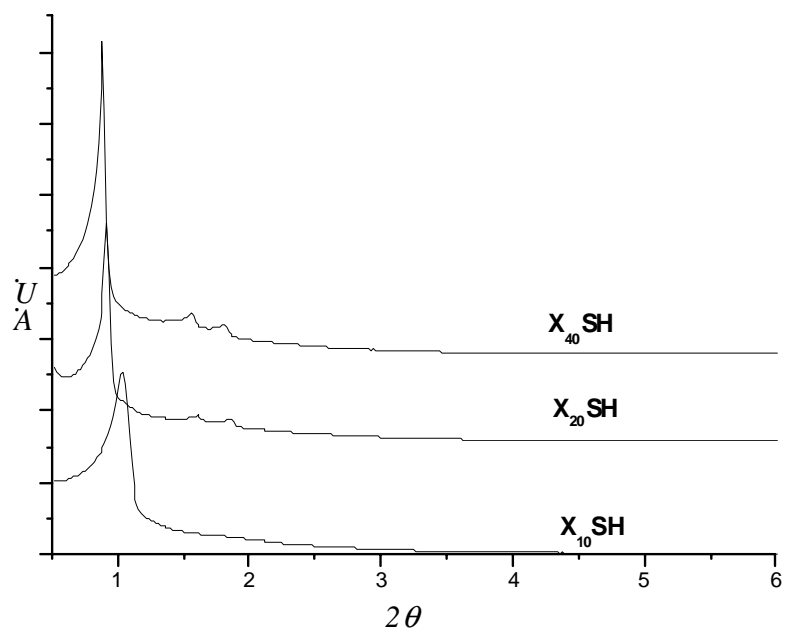
ESI 1: X-Ray Diffraction patterns of $X_{10}2$, $X_{20}2$ and $X_{40}2$



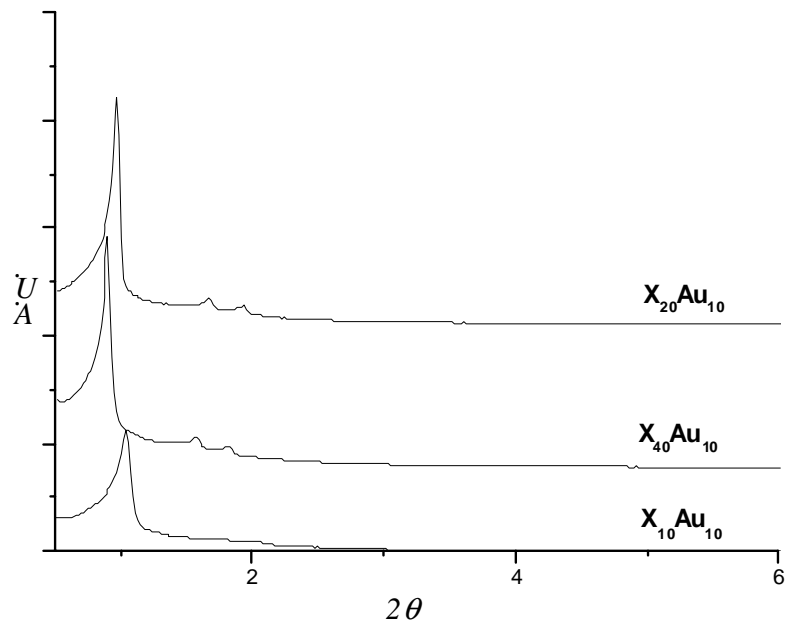
ESI 2: N₂ adsorption-desorption isotherms for **X₄₀SH**, **X₂₀SH** and **X₁₀SH**



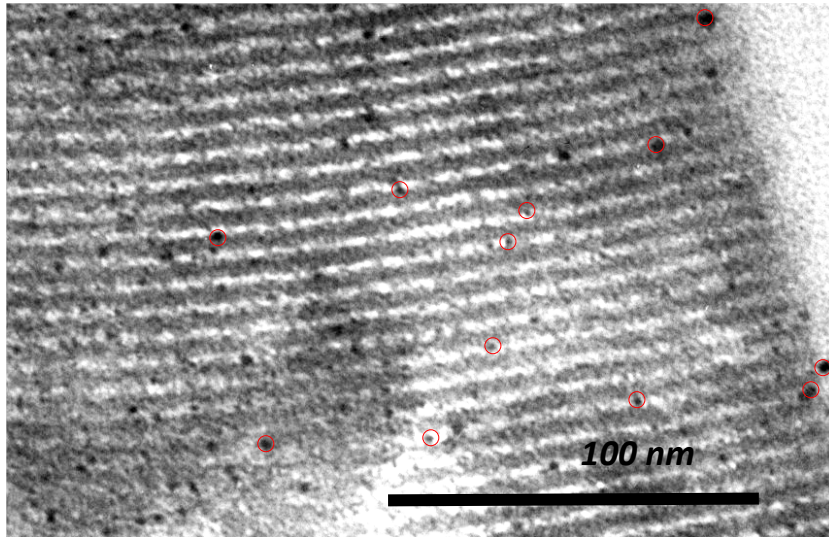
ESI 3: X-Ray Diffraction patterns of $X_{10}SH$, $X_{20}SH$ and $X_{40}SH$



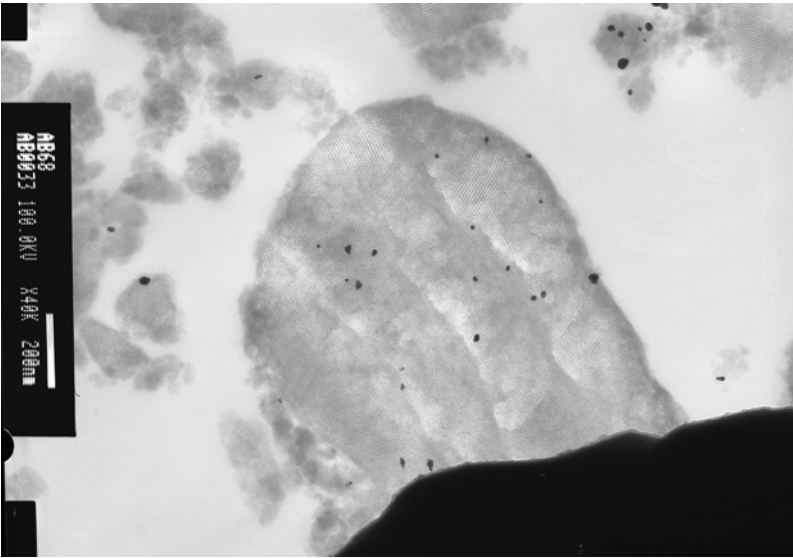
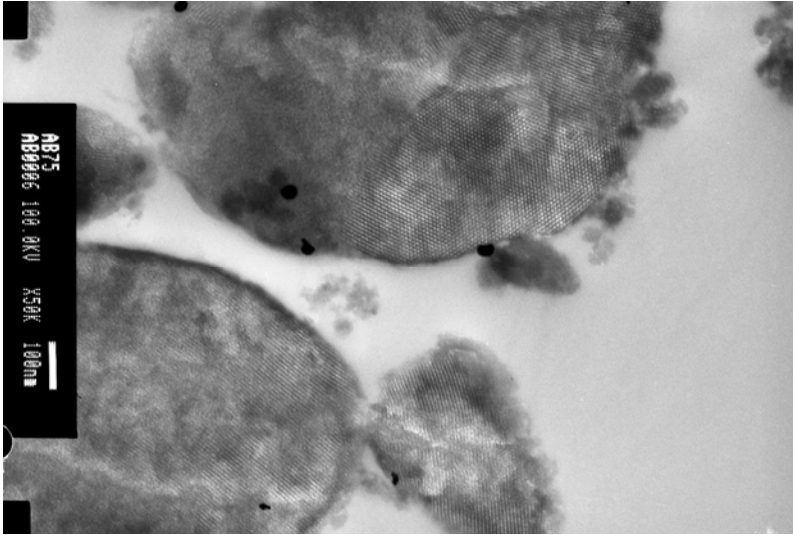
ESI 4: X-Ray Diffraction patterns of $X_{10}SH$, $X_{20}SH$ and $X_{40}SH$



ESI 5: TEM image for $X_{10}Au_{20}$.



ESI 6: TEM image for AuNPs when starting from SBA-15 (Up) and from X₂₀2 (Bottom).



ESI 7: TEM image showing the evolution of AuNPs in $X_{10}Au_5$ after thermal treatment at 900°C.

