

Support information

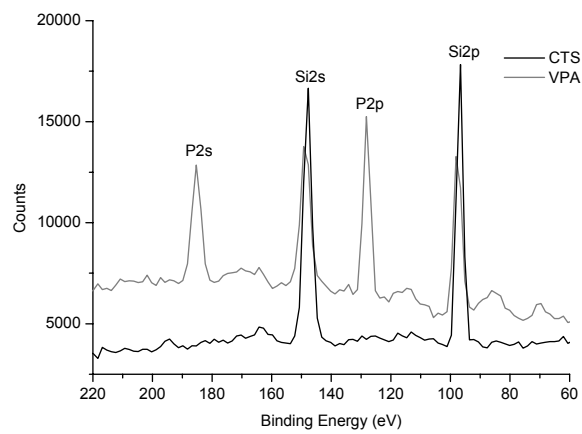


Fig. S1. XPS Survey spectra of non-treated and PVPA grafted materials.

Table S1. Chemical composition in atomic percentage of native and PVPA grafted chitosan membranes determined by XPS

Material	C_{1s} (at%)	O_{1s} (at%)	N_{1s} (at%)	Si_{1s} (at%)	P_{2p} (at%)
CTS	63.2	27.3	5.1	4.3	0.0
PVPA	56.5	32.1	6.8	2.6	2.0

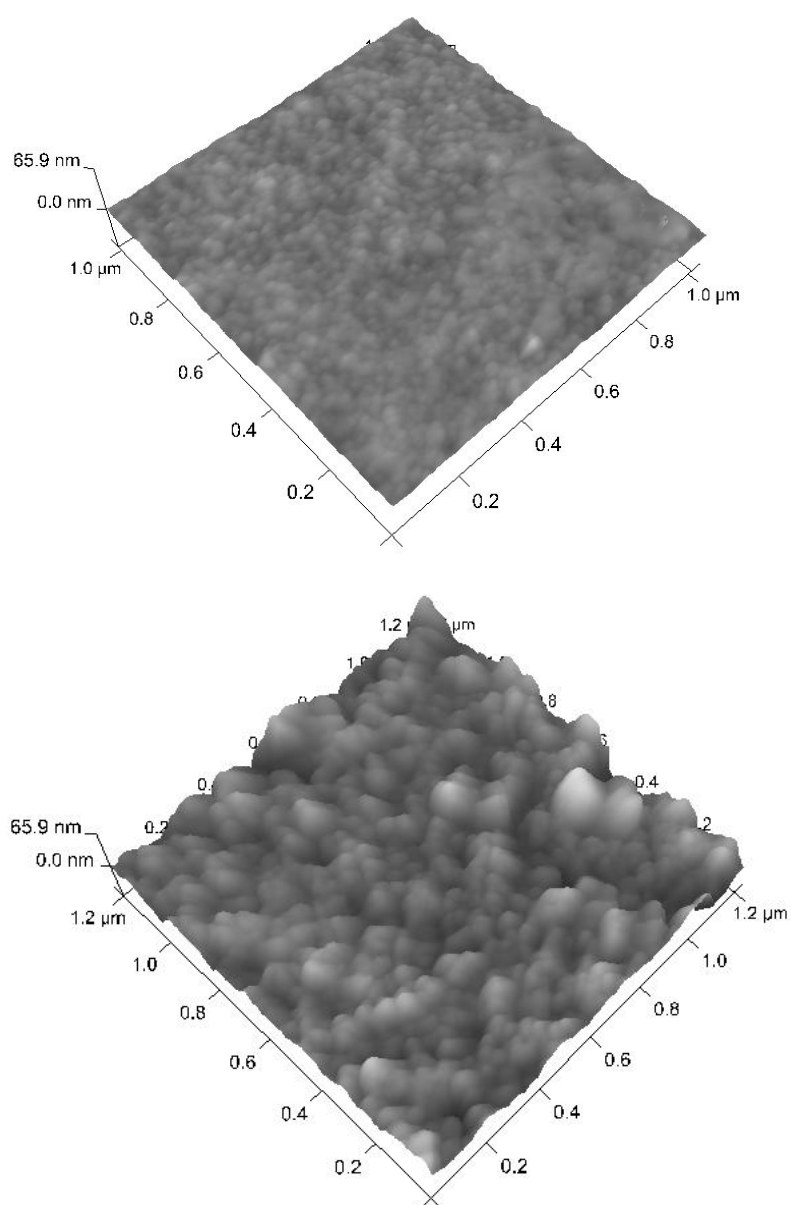


Fig. S2. AFM images of chitosan (top) and PVPA grafted (bottom) membranes.